

# Sectional door

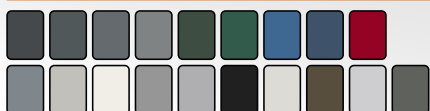
Insulated industrial exterior door

40 mm thick panels

Outside sections fitted with stylish Microline finish

Available with separate windows or window sections with aluminum window frames

Exterior available in 19 standard colours at no extra charge



Wind- and waterproof connection between the sections

Comprehensive range in filling options

Inside sections standard in RAL 9002



## ISO 40 mm

Alpha's all-rounder

### Properties

- max. B x H = 8000 x 6000 mm, max. surface area (BxH) = 48 m<sup>2</sup>
- U-value ISO 40 mm sectional door: 5000x5000 mm: 1,19 W/m<sup>2</sup>K
- wind load resistance class 3-4 according to EN 12424, or up to 12-13 Beaufort (118 - 149 km/h)
- stable sections with microline profiling in 19 standard RAL colors at no extra cost
- manual or electrically operated
- integrated wicket door available
- EN 13241 compliant

# ISO 40 mm

The ISO 40 mm sectional door is the best selling Alpha door. The door combines excellent thermal and sound insulation properties with modern designed micro-profiled panels. The possibilities are limitless in design and content, so the door is always perfectly configured for any situation. Choose from a variety of window types, heights and widths and a variety of 19 standard Alpha's in-house RAL colours.

Dimensions	
max. width (W)	8000 mm
max. height (H)	6000 mm
max. surface area	48 m <sup>2</sup>
section thickness	40 mm
ALU-sections possible	yes
μ value at 5.000 x 5.000 mm	1,19 W/m <sup>2</sup> K (completely shut)

## Components and construction

The ISO 40 mm sectional door consists of horizontal panels that roll on a rail system under the ceiling. Torsion springs balance the door's weight, making manual operation possible. In addition to standard lift, extra lift, vertical lift, roof slope lift and low lift are also available.

## Materials

- thermally insulated, galvanized steel sandwich panels, insulated with polyurethane foam (CFC-free)
- panel thickness 40 mm
- end caps in galvanized steel
- rails made of Sendzimir galvanized steel
- door fittings in galvanized steel
- rollers with nylon wheels and 11 mm shaft
- steel cables with sixfold safety
- plastic handle and foot bowl in the bottom section of manually operated doors
- top, side and bottom seal of insulating material
- seal between the panels of insulating material

## Surface treatment

- the exterior side of the panels has a microline profiling and a polyester-coating in RAL3000, RAL5003, RAL5010, RAL 6005, RAL6009, RAL7005, RAL7015, RAL7016, RAL7021, RAL7022, RAL7035, RAL8014, RAL9002, RAL9005, RAL9006, RAL9007, RAL9010, BS10A05 or BS18B25. Other RAL colors available<sup>1</sup>
- the interior side of the panels has a horizontal profiling and a polyester-coating in RAL9002. Other RAL colors available<sup>1</sup>

## Window and panel options

- various oblong window sizes available, with straight or rounded corners, containing single or double insulating glazing
- extra low burglar resistant windows or attractive round windows
- one or more panels constructed of anodized aluminum profiles with double acrylic, polycarbonate or Plexiglas glazing, polycarbonate hollow-core plate or single-walled perforated aluminium plate in 2 variations

## Drive

Manual control with cord or chain reel, or an electric motor with reduction gear. The control unit is available as standard with dead-man's control, pulse control or remote control.

## Technical details electric drive

- power..... 1N-230V-PE / 3-230V-PE / 3N-400V-PE / 3-400V-PE
- power frequency..... 50 / 60Hz
- degree of protection..... IP54

## Protection

- emergency hand chain hoist at operating height
- spring break protection
- anti lift protection
- according to EN 13241

## Control and operation

- control voltage:..... 24Vdc
- mains supply external devices:..... 24Vdc (350mA) / 230Vac (1,6A)
- status and information display (including 6 most-recent faults)
- maintenance-cycle counter
- force monitoring in OPEN direction: sudden changes to the counter-balancing are detected. Self-learning feature and consequently no activation of force monitoring function due to, e.g., a change in spring tension
- automatic detection of direct inverter (DI) or frequency inverter (FI). Setting of output speed, soft start, soft stop, braking ramps, etc. is possible

## Other forms of operation that can be connected to the standard control box:

- operation by pull switch, key-operated switch, push-button, photocell, radar, induction loop detection or remote control



Available controls:

TS971, TS981

## Structural provisions and connection (by others)

- separate technical data sheets detailing dimensional and structural requirements are available for all designs and track systems
- if an electric motor is specified, a CEE plug socket must be installed within 1 m of where the control unit will be positioned (1N-230V-PE / 3-230V-PE / 3N-400V-PE / 3-400V-PE by others)
- with standard CEE-plug, the control box is IP54 compliant

## Options / accessories <sup>1)</sup>

### Control and operation

- fast version (with frequency control)
- additional controls as described above available at surcharge
- control box directly wired (control box IP65)
- main switch directly wired on the control box (IP65)

### Protection

- leading photocell (without wiring at door)
- cable break protection
- anti lift protection
- connection of traffic lights (red/green or red and green)
- warning flash light (orange or red)
- heavy shoot bolt with spring return
- outside locking cylinder

### Construction

- integrated, outward opening wicket door with closer and cylinder lock (max. Opening width 6000 mm)
- separate 'wicket door', next to the ISO door
- customer-specified RAL coating on inside and/or outside of the sections (with the exception of fluorescent and traffic colours)
- adjusted wind restriction
- 30.000 or 60.000 cycle springs

<sup>1</sup> subject to surcharge



## For more information:

Pittelderstraat 10  
6942 GJ Didam Netherlands  
+31 316 228066  
info@alpha-deuren.nl  
www.alpha-deuren.nl

