

Ampatop® F black (plus)

Wind seal for façades with open gaps



- > Withstands UV
- > 10-year product guarantee with a joint width up to 50 mm
- > Tested with 5000 hours UV exposure
- > Also available with included or integrated tape
- > Monolithic TPU technology

Technical details		Value	Standard
s ₀ value		0,09m	EN ISO 12 572
Resistance to water penetration		W1	EN 1928
Weight		220g/m ²	EN ISO 9073-2
Fire behaviour		E	EN 13 501-1
Tear resistance	longitudinal	300N/5cm	EN 12 311-2/A
	transverse	340N/5cm	
Tear elongation	longitudinal	50%	EN 12 311-1
	transverse	60%	
Resistance to further tearing (nail shaft)	longitudinal	200 N	EN 20 811
	transverse	185 N	
Outdoor weathering		3 months (before installation of façade cladding)	
UV stability		>10 years	
Temperature resistance		-40 à +80 °C	
5000-hours test		passed	

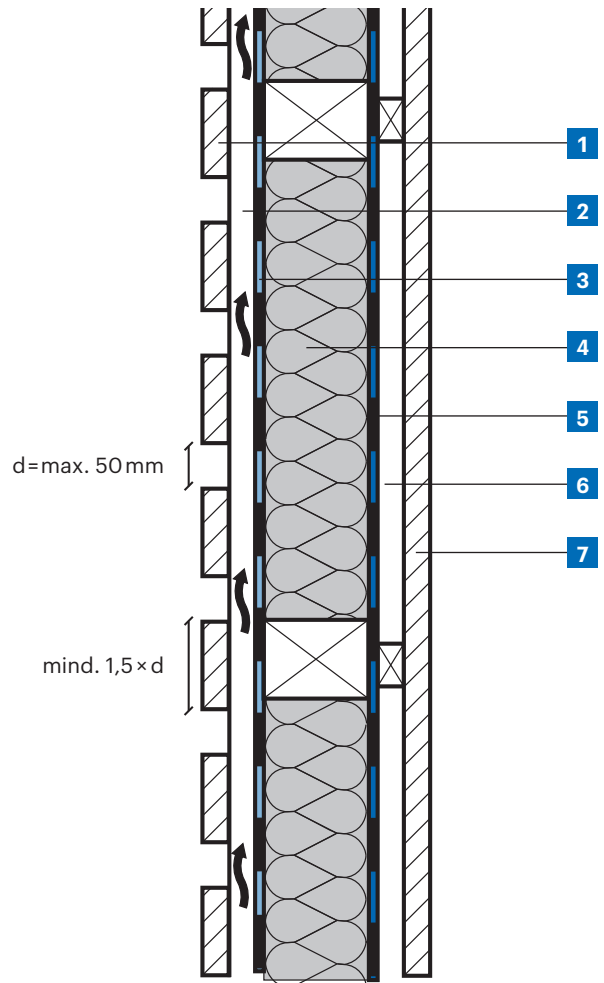


Delivery forms			
Article number	Description	Roll dimensions	Content of pallets
7640115533500	Ampatop® F black	1,5m × 50m = 75m ²	24 rolls = 1800m ²
7640115533654	Ampatop® F black with 50 m of Ampacoll® UV	1,5m × 50m = 75m ²	24 rolls = 1800m ²
7640115536075	Ampatop® F black plus with integrated tape	1,5m × 50m = 75m ²	24 rolls = 1800m ²
7640115533524	Ampatop® F black	3,0m × 30m = 90m ²	24 rolls = 2160m ²
7640115535702	Ampatop® F black with 50 m of Ampacoll® UV	3,0m × 30m = 90m ²	24 rolls = 2160m ²

Application example

- 1 External cladding
- 2 Ventilation level
- 3 **Ampatop® F black** wind seal
- 4 Insulation
- 5 **Ampatex®** or **Sisalex®** vapour checks
- 6 Installation level
- 7 Internal cladding

System accessory



Tips for laying

Ampatop® F black (plus) can be laid horizontally or vertically with the coated black side facing outwards. The laying direction must not be different on each side of the building. Roll out the membrane, line it up, cut it to length, pull it tight and fix it in place, e.g. using stainless steel tacks (this should be invisible inside the overlap, which must be at least 10 cm). Always mount the final mechanical fixation after laying (e.g. counter battens)! **Ampacoll® ND Pads** (nail seals) or **Ampacoll® ND.Band** (nail sealing tape) should be used for this.

The integrated tape, **Ampacoll® Profix** liquid adhesive or **Ampacoll® UV / Ampacoll® UV flexx** acylic tape should

be used for the wind and waterproof bonding of the overlap. This best-practice method also applies to necessary penetrations (e.g. for air vents, balcony mounts and cable holes) as well as window joints. Visible leakage of the adhesive must be avoided.

Ampacoll® Profix is also used to bond **Ampatop® F black (plus)** to metal furring within the insulation layer.

The maximum distance horizontally or vertically is 1.45 m, and the minimum width of the profiles is 4 cm. The insulation must fill the entire cavity and be laid evenly and secured in place, so that the façade membrane is not negatively affected (no bulging, pushing out, etc.). When installing on wooden materials, pressure-resistant insulating materials or similar, it is recomen-

ded to bond using **Ampacoll® Profix** every 70 cm horizontally and vertically, especially when only individual or sporadic brackets are installed for final fixing. The maximum distance between individual attachments is 70 cm (horizontal and vertical).

N.B.: Protruding attachments must be split at insulation level and should not penetrate the membrane (e.g. two-piece brackets with clamping flanges).



Note the application guidelines and other system products in our adhesive matrix.



For more detailed information and documents see www.ampack.biz

Sales through dealers

Ampack Switzerland: +41 71 858 38 00
 Ampack Austria: +43 5523 53433
 Ampack Germany: +49 7621 1610264
 Ampack France: +33 4 50 83 70 54
 Ampack Italy: +39 471 053 475
 Ampack Ireland: +353 91 394 467
www.ampack.biz



This data may become invalid as a result of new information or development.
 Current information can be found at www.ampack.biz. © Ampack AG, Rorschach, 03.2023

3010EU/EX.YY(VS)0323

