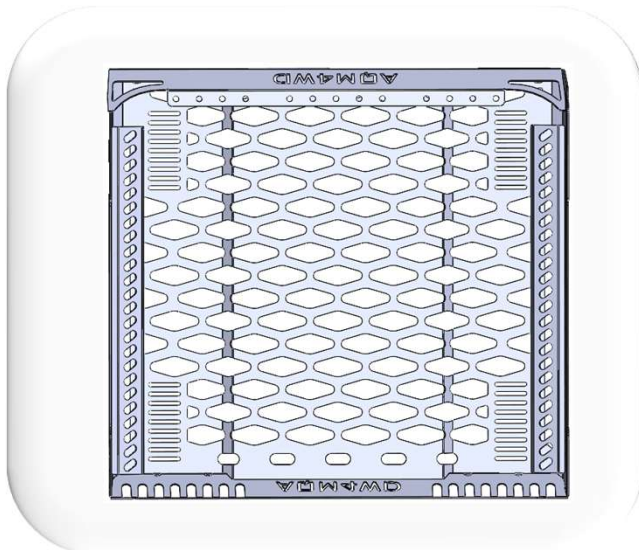
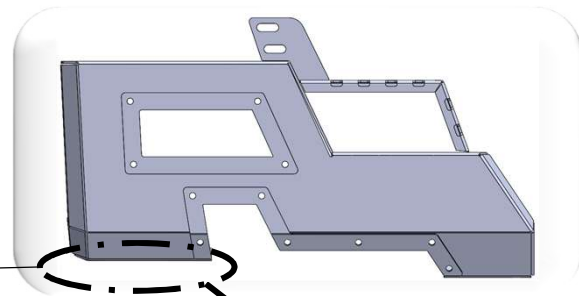
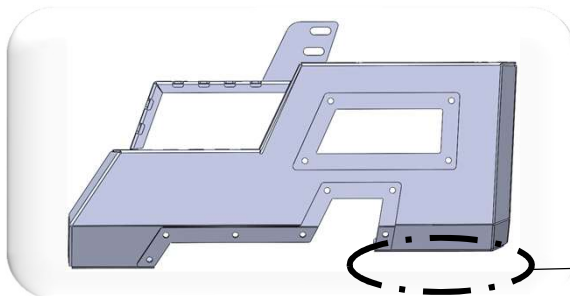
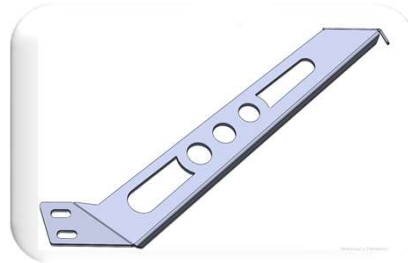
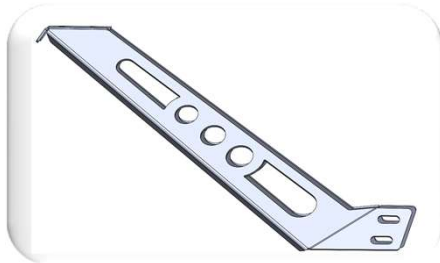
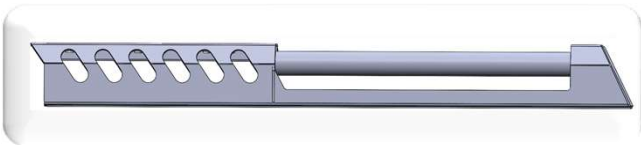
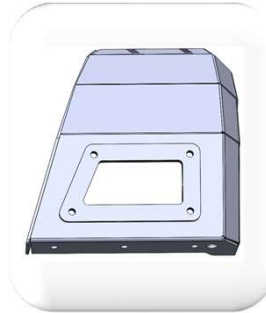
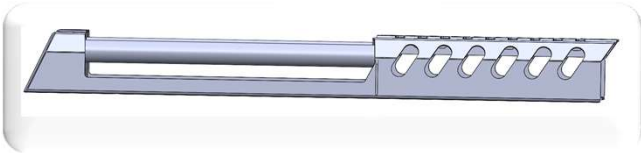
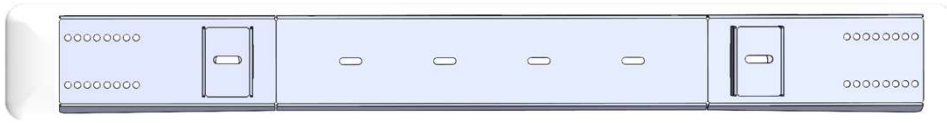


Ürün toplam 12 parçadan oluşmaktadır. Sürgülü kapaklı sistemde 2 tane alt bağlantı parçası kullanılmamaktadır. Sürgülü sistem kullanılırken, boşluklar sürgülü sisteminin olduğu yere denk getirilerek montajı yapılacaktır.

2201TR-01

Go to Index






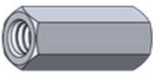

not to be used in sliding system



Go to Index



### 3. Bolt Kit

| Designation  | Part No | Name              | Spec.                                  | Q'ty   |
|--|---------|-------------------|--|--------|
|   | 1000    | Bolts             | DIN 6921 (M8x20) CHROME<br>QUALITY 8.8 | 30 pcs |
|   | 1000    | Bolts             | DIN 6921 (M8x50) CHROME<br>QUALITY 8.8 | 8 pcs  |
|   | 1002    | Nuts              | DIN 6923 (M8) CHROME<br>QUALITY 6      | 38 pcs |
|   |         | Nuts              | DIN 6334 (M8)                          | 6 pcs  |
|  |         | Special<br>Washer | PLASTIC                                | 72 pcs |
|  |         |                   |  |        |