

ROLLBAR CLASSIC

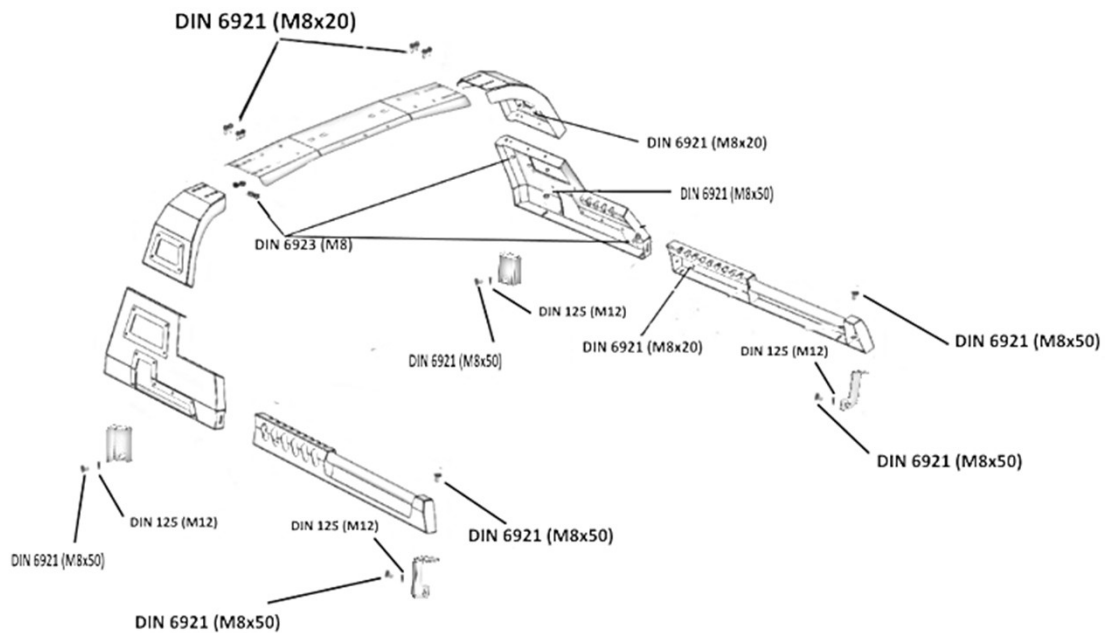
Go to Index



RAM 19+ 6211

**AQM
S11**

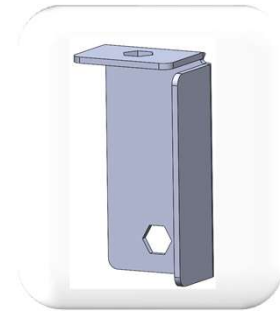
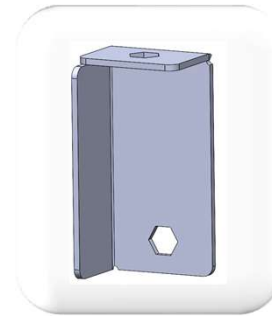
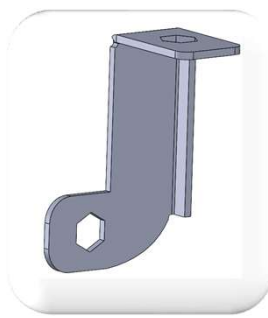
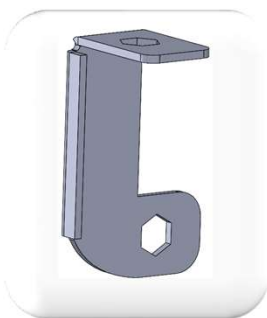
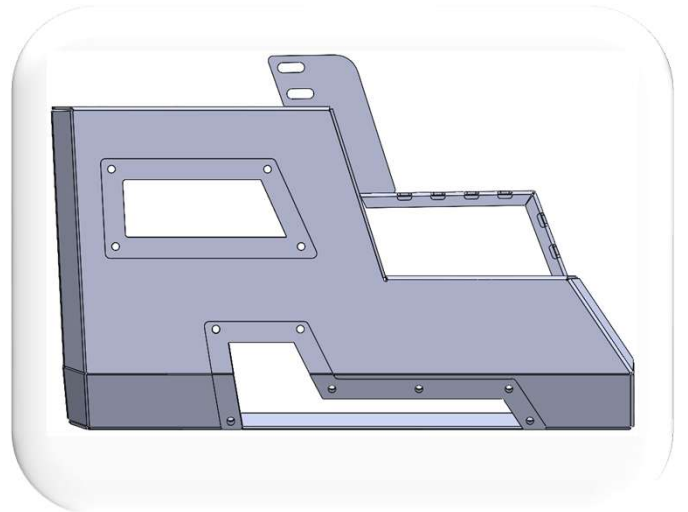
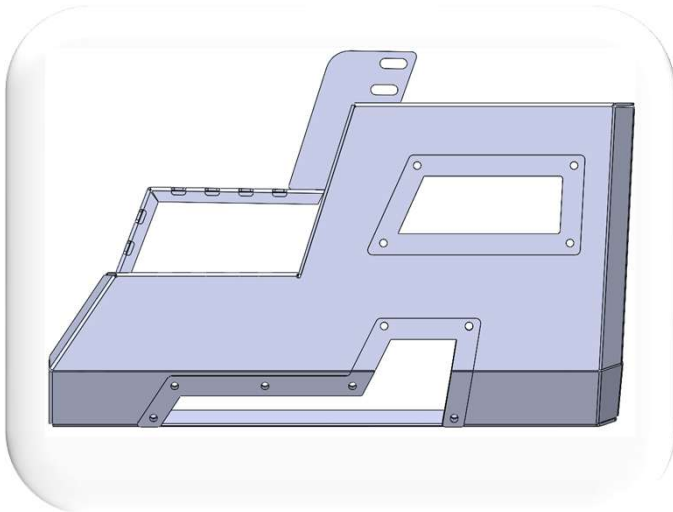
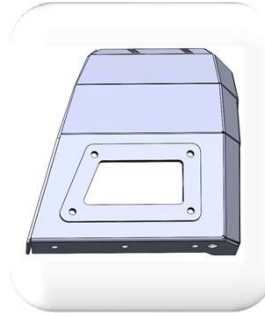
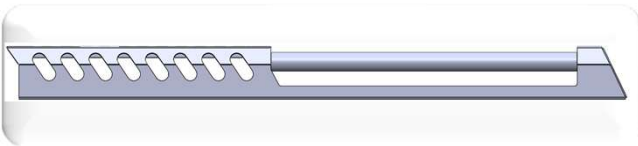
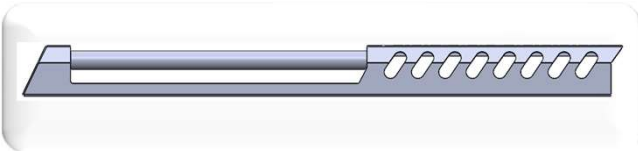
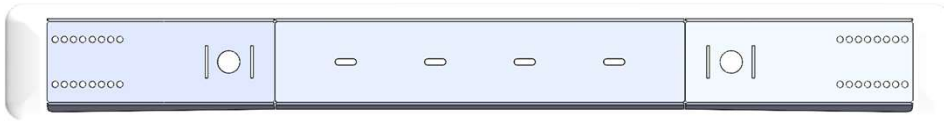
MOUNTING INSTRUCTION COMPATIBLE FOR ALL PRODUCTS



**VERIFY YOU HAVE ALL THE COMPONENTS BEFORE STARTING THE INSTALLATION.
REFER TO THE ENGINEERING DRAWINGS AT THE END OF THIS DOCUMENT FOR A COMPLETE
PARTS LIST**

2201TR - 01






Go to Index



3. Bolt Kit

Go to Index



Designation	Part No	Name	Spec.	Q'ty
		Bolts	DIN 6921 (M8x20) CHROME	16 pcs
		Bolts	DIN 6921 (M8x50) CHROME	8 pcs
		Nuts	DIN 6923 (M8) CHROME	16 pcs
		Special Washer	M8	48 pcs
		Big Washer	M8	4 pcs