

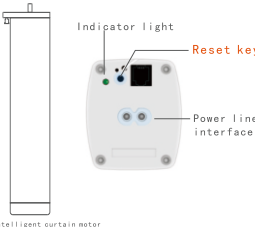
Tuya WiFi curtain motor

INSTRUCTIONS



According to the company's business development, the product may be adjusted from time to time, and the specific functions and contents may be adjusted dynamically. The company cannot guarantee that the relevant packaging and instructions updated in time. Customers please use in practical. The functions and contents shall prevail.

Structural description



**Reset key**  
**Add device:** press 3 times, then hold on the press reset key till the light on  
**Remove device:** press 3 times, then hold on the press reset key till the light on

**Indicator light**  
Colour: green;  
Light on: Remove device

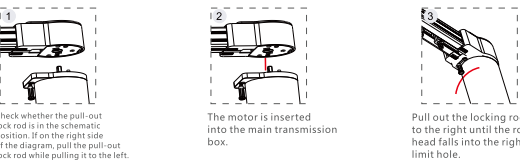
Basic parameters

Product model	D582-Tuya-ZGB	Radio frequency	2.4G/433MHz	Maximum width	12m
Rated power	45W	Maximum payload	50Kg	Protection grade	20IP
Rated current	0.14A	Fuselage weight	1.05Kg	Running time	>4min
Rated torque	1.2Nm	Operation noise	33dB	Working temperature	-10℃~50℃
Running speed	14cm/s	Minimum width	0.9m	Power line type	2 core
Working voltage	100~240Vac 50/60Hz				

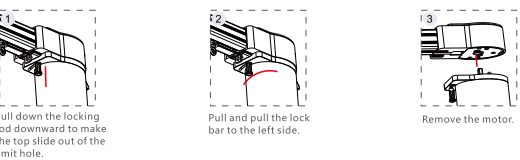
Functional characteristics

- Touch start function
- Power failure pull function
- Resistance And Stop Function
- Run gracefully
- Fabric rebound correction function
- Stroke fine tuning function
- Electronic memory limit
- Remote control
- Timing control
- Speech control
- Positive inversion settings
- Galibration function

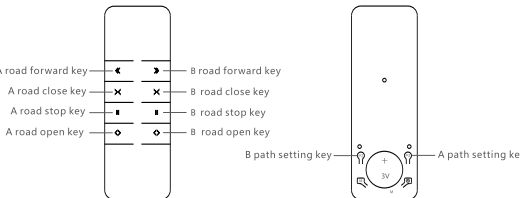
Motor installation



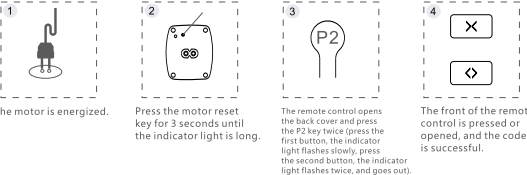
Motor disassembly



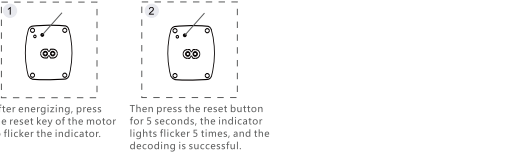
Remote control pair code



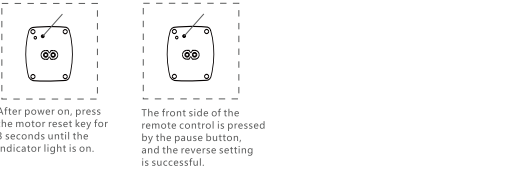
Motor and remote control counter code



Motor and remote control decoding



Commutation of motor operation



Tuya APP Connection



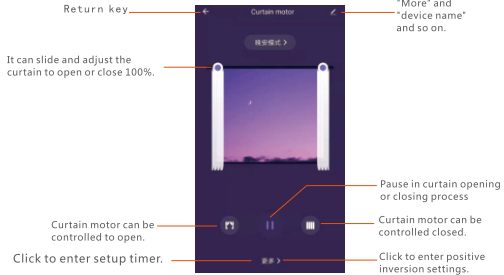
Disconnection

Two way:

One: Choose the instrument you would like to delete, press the [X] button, and choose 删除 (delete) instrument?

Two: Press the learning code three times continuously, then long-press again until the green light is quick shining, then the instrument deleted

Interface description



After sale policy

Three package provisions

1. Within 7 days from the date of your signature and receipt, if there is a performance failure of this product, the service center will confirm that it can enjoy free return or exchange services.
2. Within 8-15 days from the date of your signature, if there is a performance failure of this product, the service center will determine that it can enjoy free exchange or maintenance services.
3. Within 36 months from the date of your signing and receiving, the product has performance failures, which can be repaired free of charge by the service center.

Quality assurance performance failure

1. the product is not energized, or the power fails to start properly.
2. the key of the device can not be used normally.
3. the function of other products caused by other hardware failures can not be used normally.

Non warranty range

1. Unauthorized maintenance, misuse, collision, abuse, infusion, accident, alteration, incorrect use of non-product accessories, or tear, alter labels, anti-counterfeiting marks;
2. more than three packages are valid.
3. the damage caused by force majeure, such as fire, flood and lightning strikes, is not in line with the situation of failure. 4. failure of the product and accessories due to human causes.

Commitment and statement

The company guarantees that the products conform to the national standards. The company will not undertake any obligations for any declarations related to products that are not directly issued by the company.