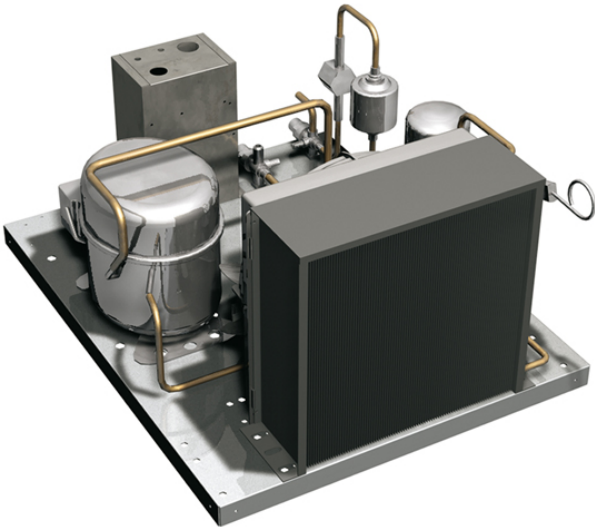


GR65BT

REMOTE COOLING UNIT -24°C ÷ -12°C

Cooling unit suitable for remote installation. To be installed at a maximum distance of 25 pipes linear meter, in a technical compartment or outside with protection. Air cooled. To fill with refrigerant fluid R404A or R452A.



Technical features

Refrigeration power -23,3°C W	798
Frequency/voltage	230V 1N~ / 50Hz
Electric power, kW	0,68

Dimensions and weights

Packing (LxDxH), cm	54x64x37
Dimensions (LxDxH), cm	48x60x33
Gross Weight (kg)	35
Net Weight (kg)	32

REMOTE COOLING UNIT -24°C ÷ -12°C

