

15CLX64 8 Ω

- 500 W continuous program power capacity
- 80° nominal coverage
- 40 - 17000 Hz response
- 95.2 dB sensitivity
- Single Neodymium magnet assembly
- Aluminum demodulating ring for very low distortion

The CLX series products incorporate a heavy-gauge metal basket construction paired with a cost-optimized single neodymium magnet motor design for enhanced structural integrity and efficiency. This coaxial solution combines a lightweight woofer with a high-fidelity HF driver, enabling balanced acoustic output across the frequency spectrum. This configuration minimizes overall system weight while maximizing performance metrics, allowing audio engineers to develop solutions with superior cost-to-performance ratios suitable for compact, high-value applications.



15CLX64 8 Ω

GENERAL

Nominal Diameter	380 mm (15 in)
Nominal Impedance	8 Ω
Frequency Range	40 Hz - 17000 Hz
Dispersion Angle	80 °
Included by -6 dB down points.	

PARAMETERS

Fs	37 Hz
Re	5.5 Ω
Qes	0.81
Qms	9.4
Qts	0.75
Vas	227 dm³ (8.02 ft³)
Sd	855 cm² (132.5 in²)
η0	1.44 %
Xmax	5.3 mm
Xvar	8 mm
Mms	82 g
Bl	11.5 Tm
Le	1.05 mH
EBP	46 Hz

SPECIFICATIONS HF UNIT

Nominal Diameter	380 mm (15 in)
Nominal Impedance	8 Ω
Minimum Impedance	7.9 Ω
Nominal Power Handling	70 W
2 hour test made with continuous pink noise signal within the range from the recommended crossover frequency to 20 kHz. Power calculated on rated minimum impedance. Loudspeaker in free air.	
Continuous Power Handling	140 W
Power on Continuous Program is defined as 3 dB greater than the Nominal rating.	
Sensitivity	106 dB
Applied RMS Voltage is set to 2.83V.	
Frequency Range	1 kHz - 17 kHz
Recommended Crossover	1.2 kHz
12 dB/oct. or higher slope high-pass filter.	
Voice Coil Diameter	51 mm (2 in)
Winding Material	Aluminium
Inductance	0.14 mH
Flux Density	1.6 T
Diaphragm Material	HT Polymer

SPECIFICATIONS LF UNIT

Nominal Diameter	380 mm (15 in)
Nominal Impedance	8 Ω
Minimum Impedance	6.2 Ω
Nominal Power Handling	250 W
2 hours test made with continuous pink noise signal within the range Fs-10Fs. Power calculated on rated minimum impedance. Loudspeaker in free air.	
Continuous Power Handling	500 W
Power on Continuous Program is defined as 3 dB greater than the Nominal rating.	
Sensitivity	95.2 dB
Sensitivity at 2.83V/1m is calculated based on declared -0and Re values.	
Voice Coil Diameter	64 mm (2.5 in)
Winding Material	Copper
Former Material	Glass Fibre
Winding Depth	14.5 mm (0.57 in)
Magnetic Gap Depth	8 mm (0.31 in)
Flux Density	0.9 T

DESIGN

Surround Shape	Triple Roll
Magnet Material	Neodymium Ring
Spider	Single
Woofer Cone Treatment	WP Waterproof Front Side

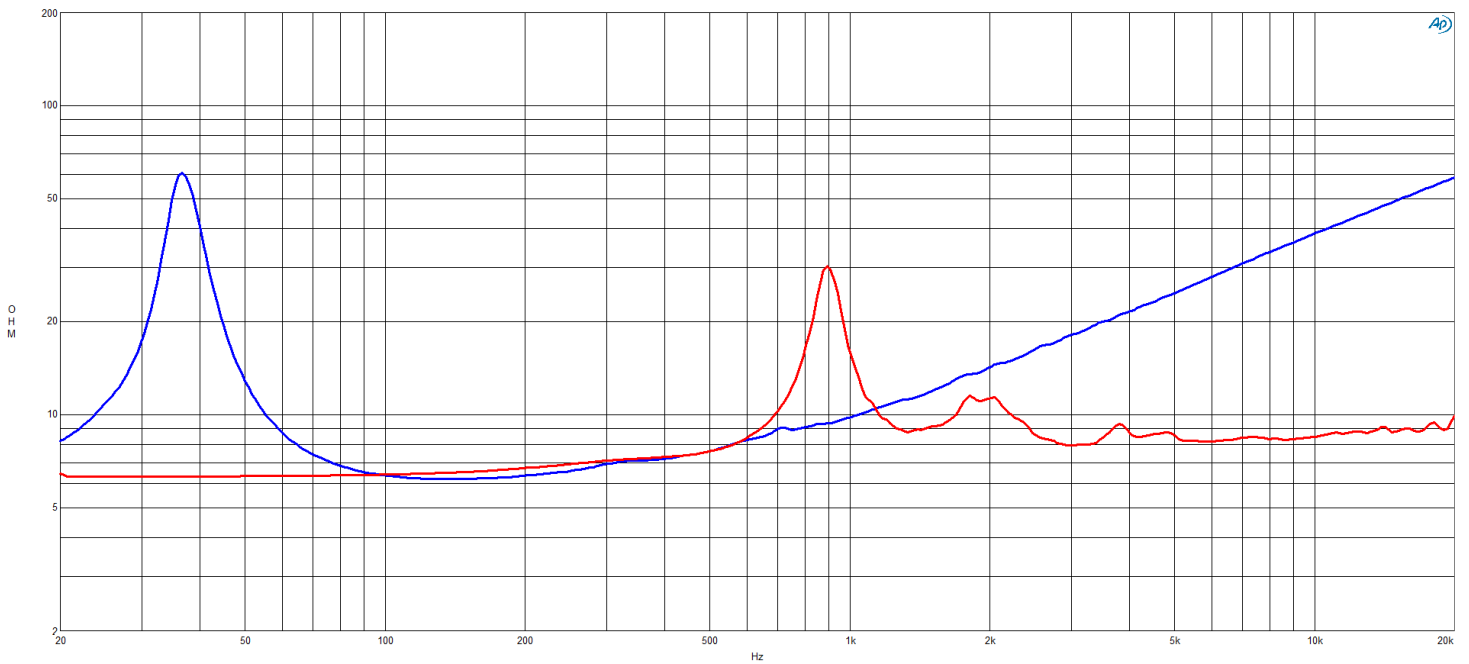
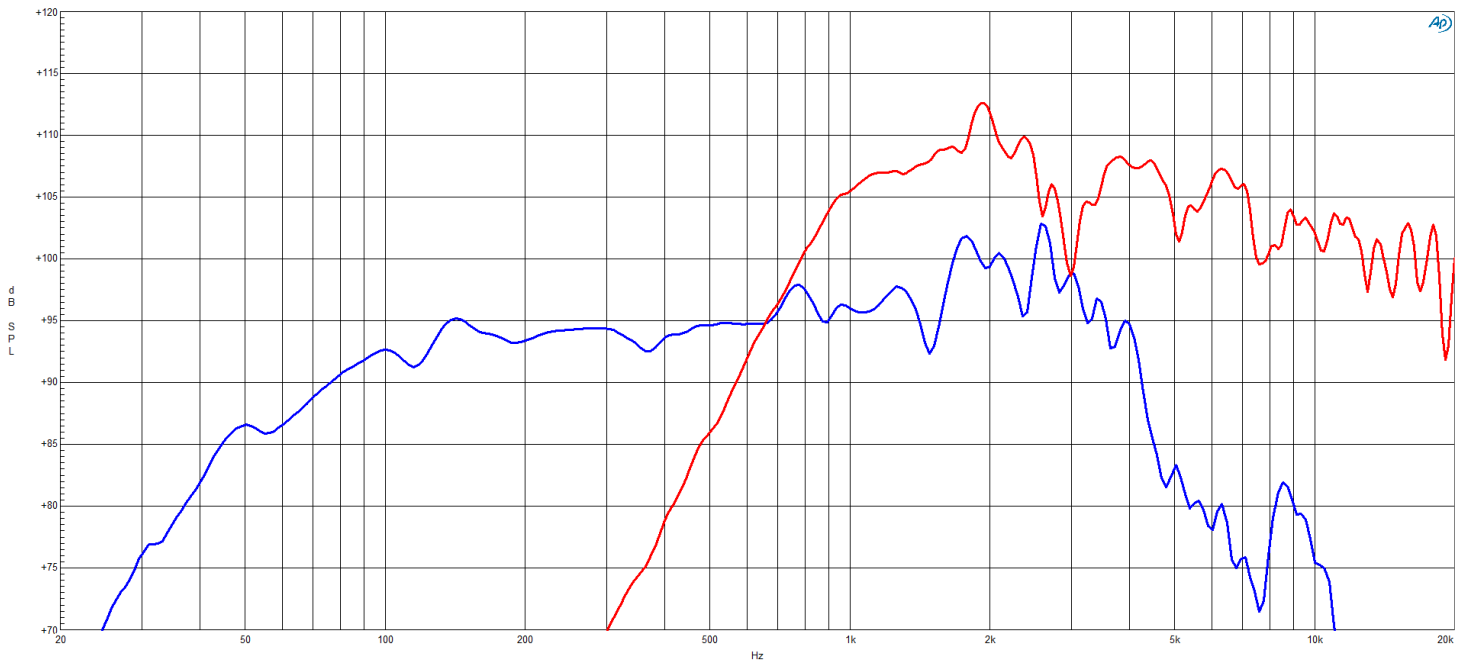
MOUNTING AND SHIPPING INFO

Overall Diameter	388 mm (15.3 in)
Bolt Circle Diameter	372 mm (14.65 in)
Baffle Cutout Diameter	353 mm (13.9 in)
Depth	192 mm (7.56 in)
Flange and Gasket Thickness	10 mm (0.39 in)
Net Weight	3.8 kg (8.38 lb)

SERVICE KITS

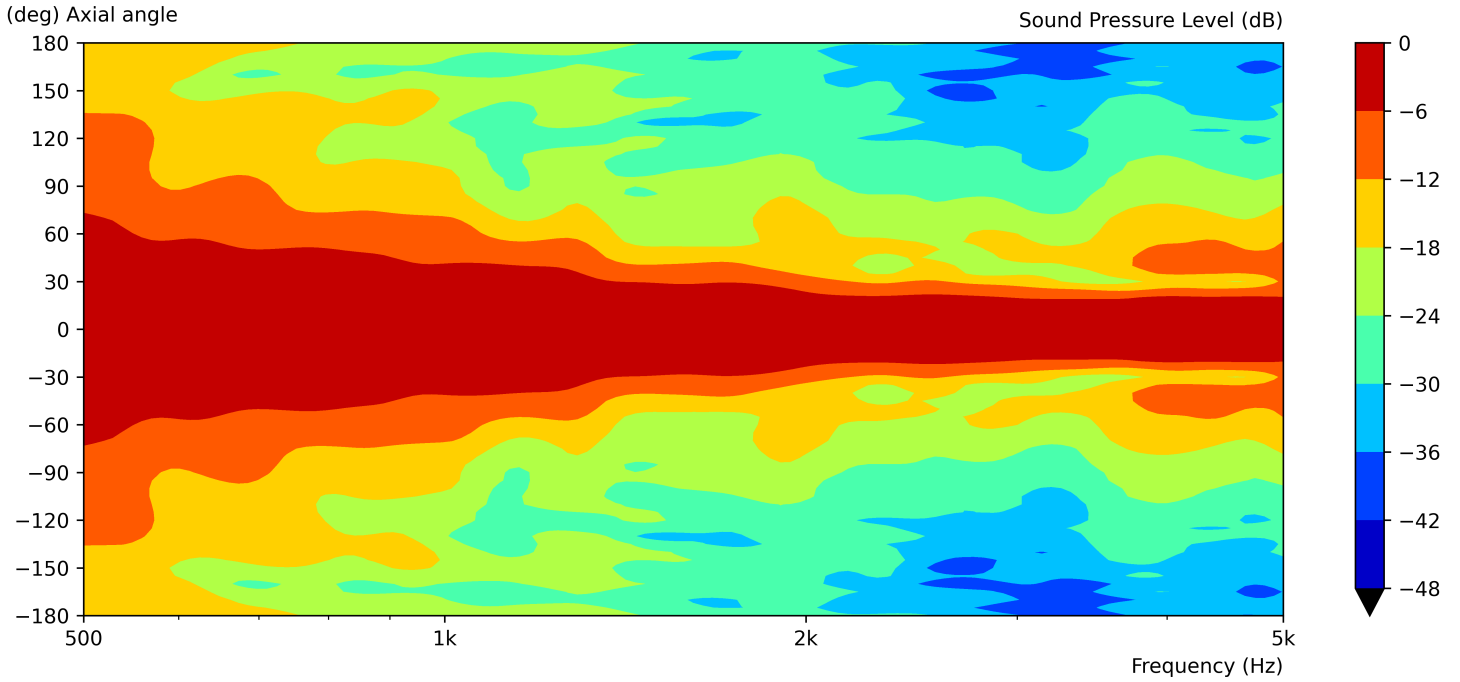
HF replacement-diaphragm	MMD5508
--------------------------	----------------

15CLX64 8 Ω

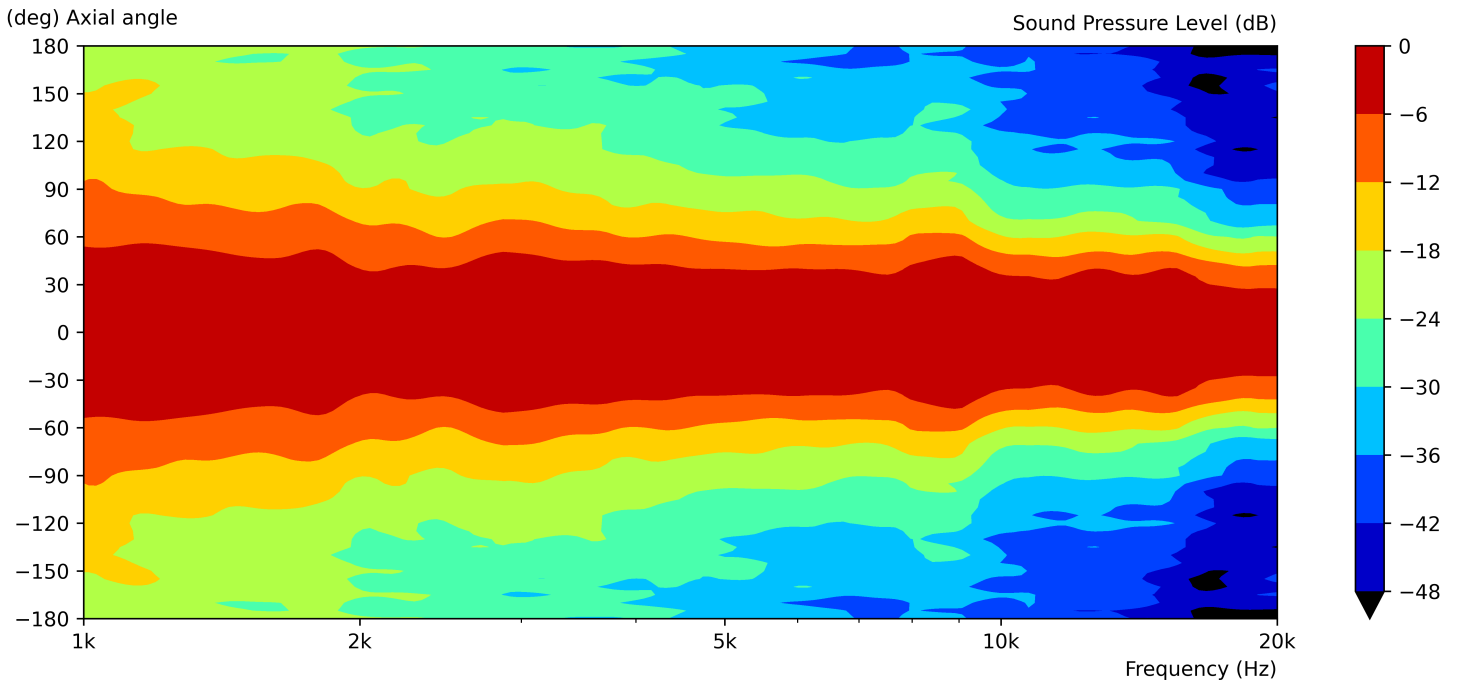


15CLX64 8 Ω

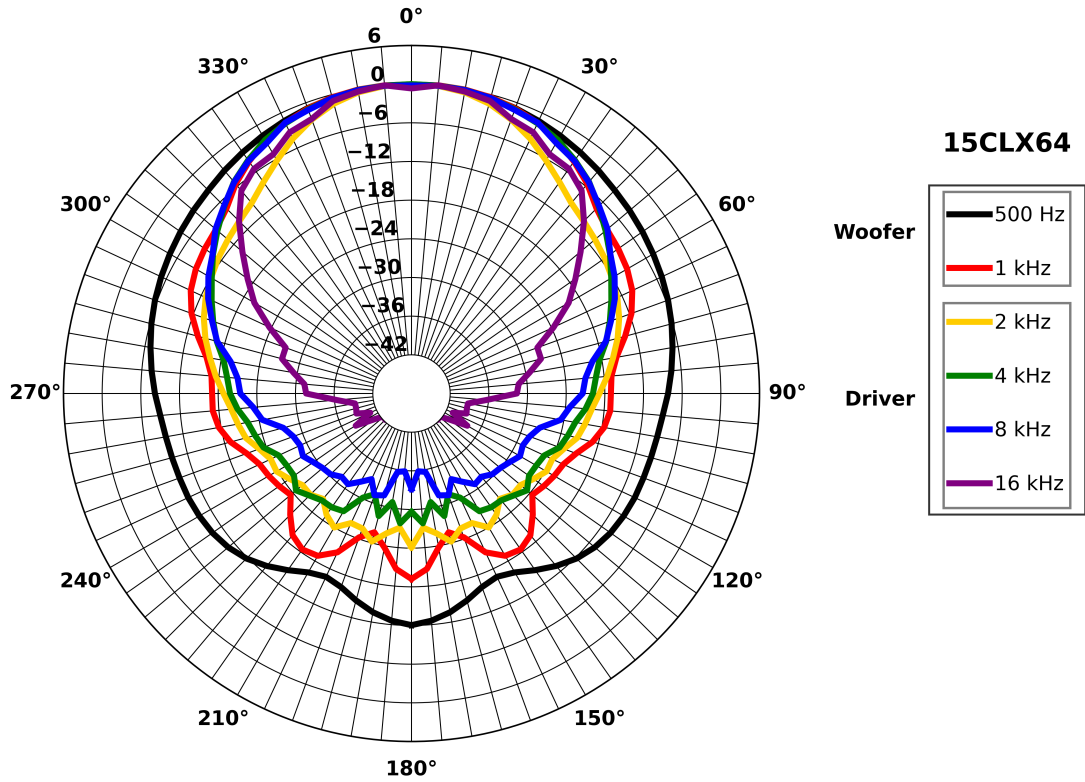
15CLX64 LF Directivity Map



15CLX64 HF Directivity Map



15CLX64 8 Ω



15CLX64 8 Ω

