

ME146

SPECIFICATIONS

Throat Diameter	36 mm (1.4 in)
Nominal Coverage Horizontal	120°
Cutoff Frequency	0.5 kHz
Material	Polycarbonate
Design	Line Array Optimized Waveguide

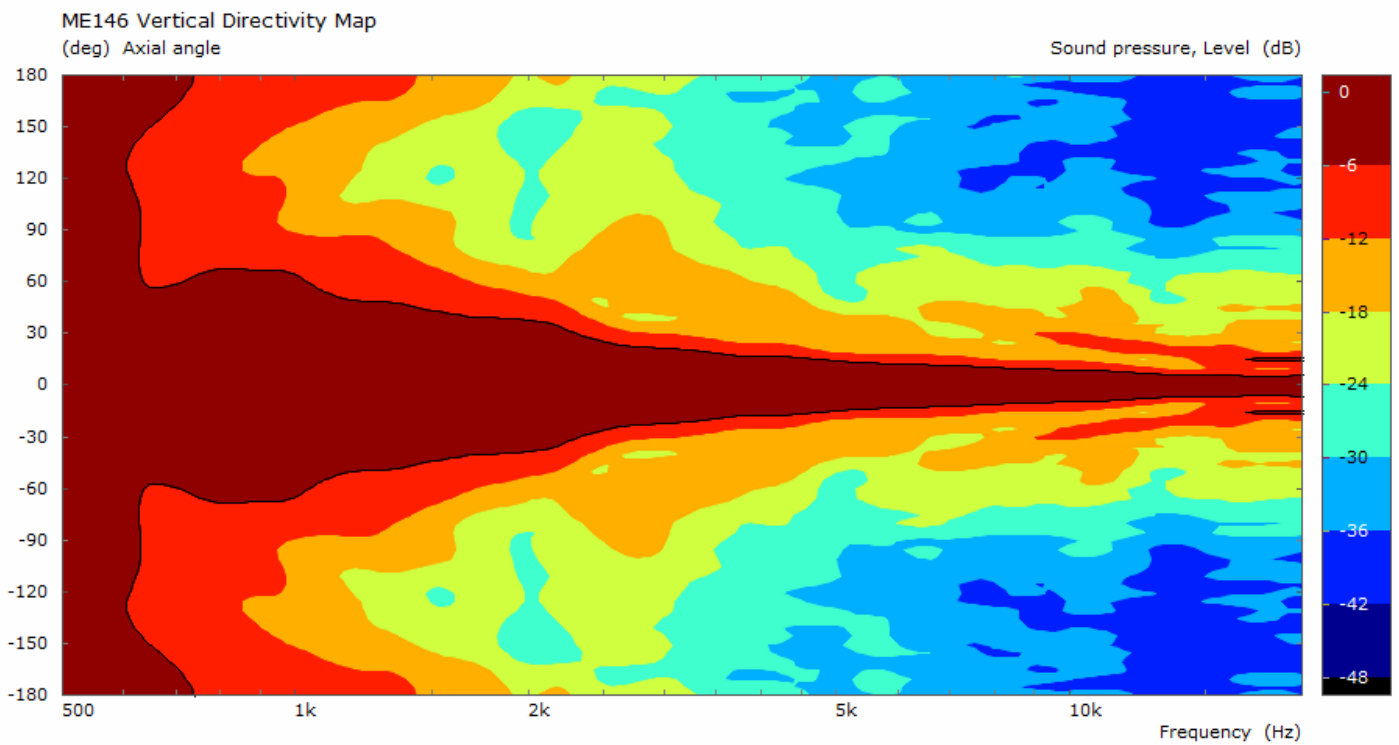
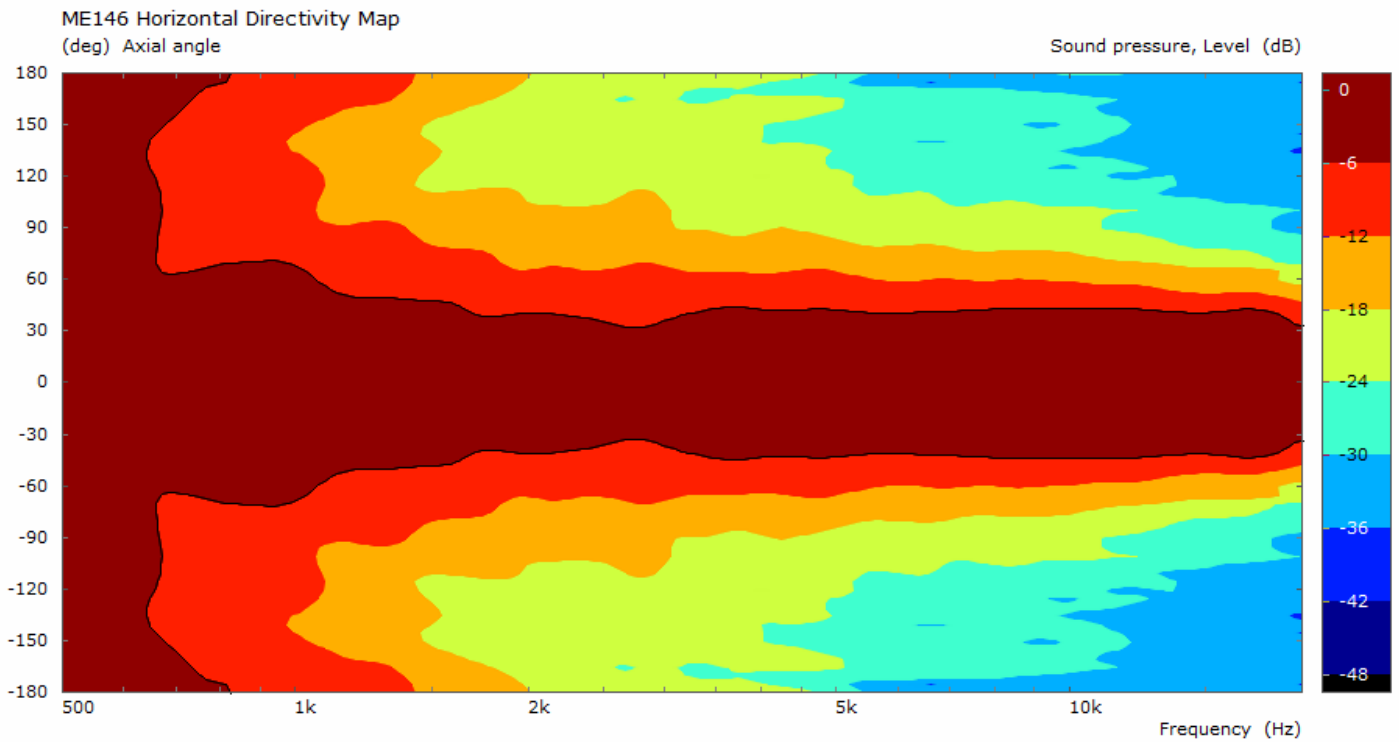
MOUNTING AND SHIPPING INFO

Net Weight	0.64 kg (1.65 lb)
Dimensions	180x80x176 mm (7.1x3.15x6.9 in)

- 1.4" throat entry
- Line Array optimized Waveguide
- 120° max horizontal coverage
- Vertical coverage depends on configuration
- Very good loading down to 500 Hz
- Designed specifically for the extra octaves present in our coaxial compression driver



ME146



ME146

