

Temperature and Humidity Smart Switch Module Manual

Product introduction

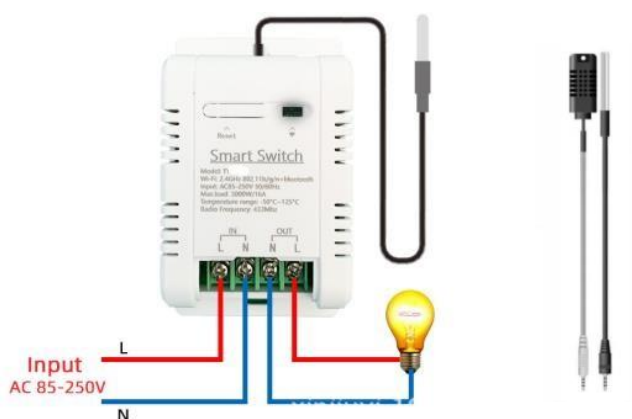
It is easy-to-use, safe and reliable dual relay output temperature and humidity controller.

It can be used as over-temperature protection and automatic temperature & humidity control system for various electric appliances such as equipment for home-brew, pet breeding, incubation, seedling heat mats, terrestrial heat control, constant temperature cycle of heating pump, culture fermentation, accelerating germination, electric radiator, electric oven, automatic watering, humidification and dehumidification as humidity control system.

Specification

Code	ATLO-TS1-TUYA	ATLO-TS2-TUYA
Input Voltage	90-250V AC, 50/60Hz	
Max. Current	16A	
Temperature Measurement Range	-40~80 °C	
Humidity Measurement Range	0~99%	
Wireless Protocol	Wi-Fi 2.4GHz 802.11 b/g/n	
APP Control	Smart Life APP (Android 4.4/IOS 8.0 or above)	
Type of Temperature and Humidity Probe	3.3-5.5VDC	
Temperature and Humidity Accuracy	±3%H ±0.5°C	
Come with Probe	Temperature	Temperature + Humidity

Wiring Diagram



How to download and use App.

1. Download the smart phone application by scanning the QR code or searching
For smart Life-Smart Living or Tuya Smart in iPhones or android smart phone.



Smart Life APP



Tuya Smart APP

2. Launch the App and log in, new users need to register a new account.

3. WiFi Link method and reset/Pair Wi-Fi code

Complete the wiring of the switch module before pairing.

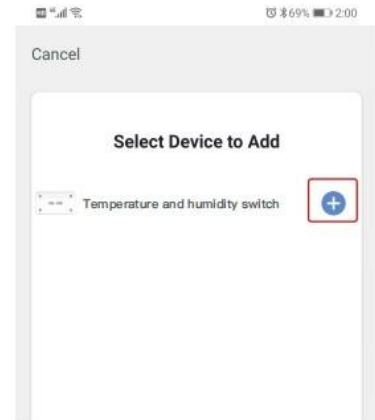
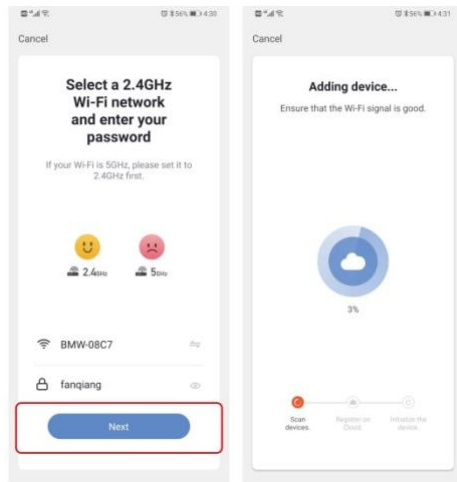
Long press the reset button on module until indicator flashed for reset.

Pair and clear up the WiFi Code with blue-tooth and WiFi connected meantime.

Open Smart Life/Tuya App and Click "+", then the prompt page will show on screen automatically, and click ' Go to add"

4. Select the device you want to add and click "+"

5. Enter Wi-Fi Password and click "Next",waiting for completing the connection



6. Add the device successfully, you can edit the name of the device to enter the device page by click "Done"