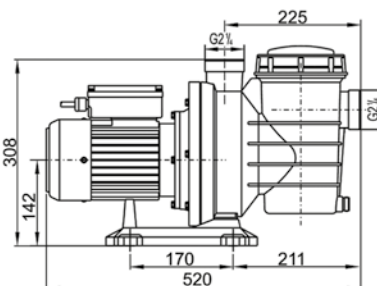
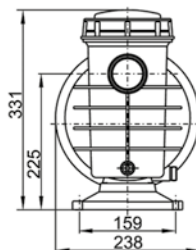
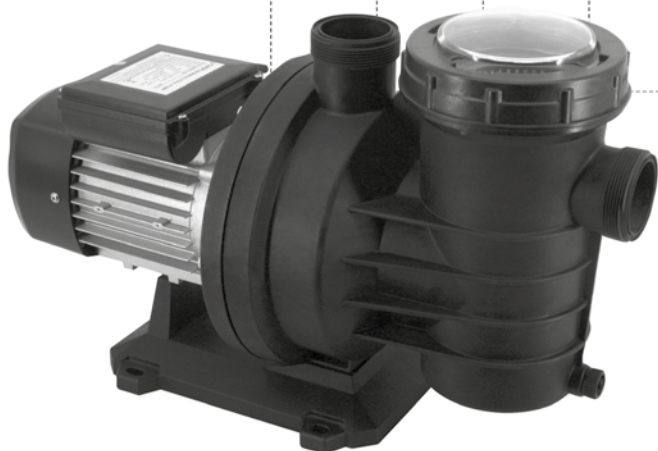


## SWIM



### Self-priming swimming pool pump with pre-filter.

Designed for maximum efficiency of filtration and circulation of water with chlorine content. It can operate with sea water. The pump is made of plastic materials, with a catcher for leaves and larger impurities, including fibrous ones. Available with Ø 50 mm or Ø 48.5 mm inlets/outlets.

#### Motor

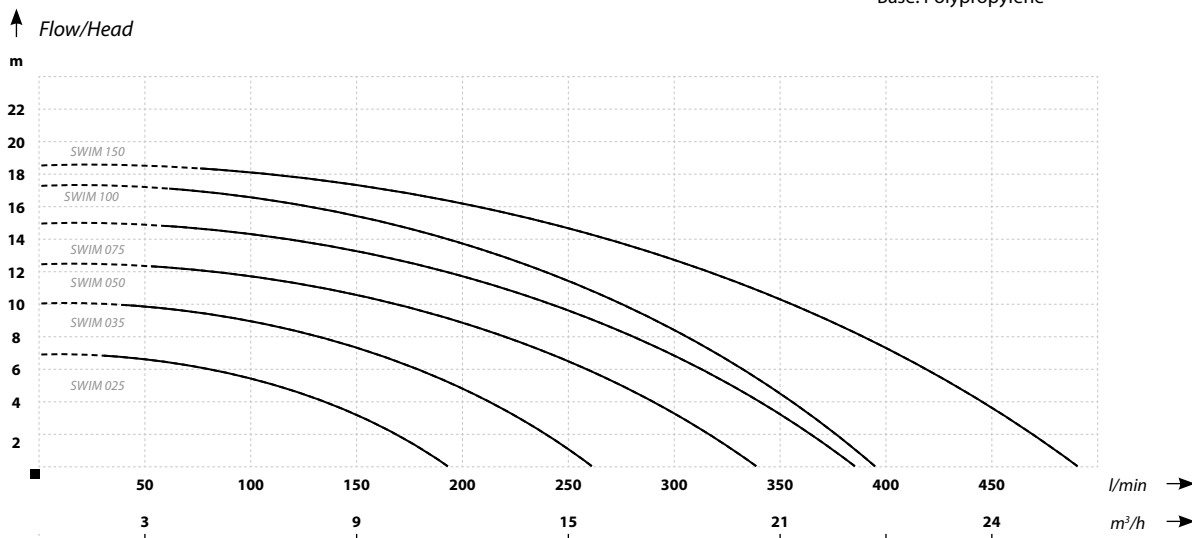
- Asynchronous squirrel-cage with external ventilation
- Supply voltage 220-240 V/ 50 Hz.
- IP55 Ingress Protection
- Insulation Class F
- Single-phase motor with built-in capacitor and thermal protection
- Self-lubricating ball bearings
- Rotational speed 2850 rpm
- Designed for continuous operation

#### Operating conditions:

- Water temperature: 5-50°C
- Ambient temperature: max. 50°C
- Max. working pressure: 0.3 MPa

#### Materials:

- Pump housing: ABS
- Pre-filter: ABS
- Inlet/outlet: ABS/PVC
- Access plate: Polyethylene HD
- Impeller: Glass fibre reinforced LEXAN (resistant to abrasion by sand)
- Venturi tube: Glass fibre reinforced LEXAN (resistant to abrasion by sand)
- Mechanical seal: SIC/C
- Shaft: Stainless steel SUS 316
- Base: Polypropylene



### PARAMETERS

Name	Flow (l/min)	Head (m)	Motor power		Amperage (A)	Weight (kg)
			(kW)	(HP)		
SWIM 025	195	7	0,37	0,50	1,9	9,3
SWIM 035	255	10	0,50	0,75	2,7	9,5
SWIM 050	340	12,5	0,75	1,0	3,8	9,7
SWIM 075	370	15	0,9	1,2	4,6	10,5
SWIM 100	390	17,5	1,1	1,5	5,8	10,9
SWIM 150	470	18,5	1,5	2,0	7,0	11,5