



NIMBUS M HYBRID NET R32



Modele

Nimbus Hybrid Module R32

NIMBUS POCKET M NET R32



GENUS ONE HYBRID NET R32



Modulul hybrid dedicat
poate fi instalat direct sub
o centrala murala,
reducand spatiul si
amprenta pe perete

Centrala + modulul hybrid
devin un sistem unic

Modele

Nimbus Hybrid Module R32 – Hybrid Universal R32

Doua modele de module hibrod care pot acoperi intreaga gama de sisteme hibride



HYBRID R32

Proiectat pentru centrala Ariston pentru a asigura o integrare perfecta in sistemul termic



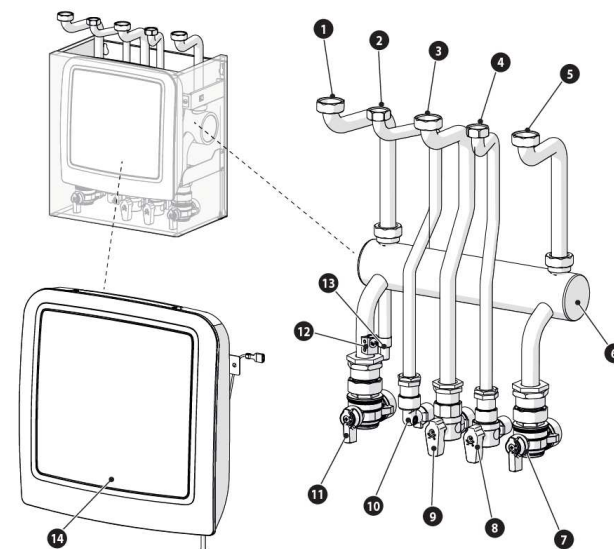
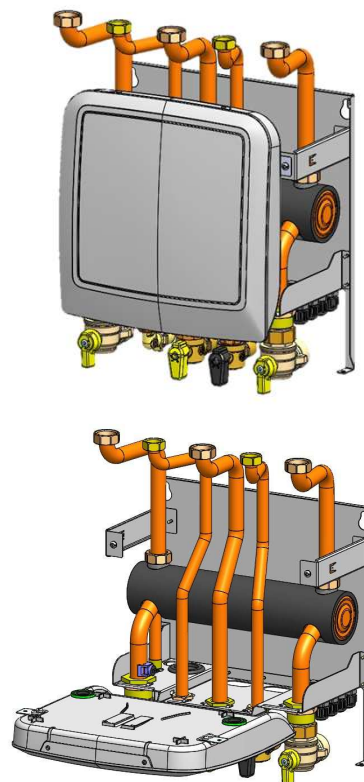
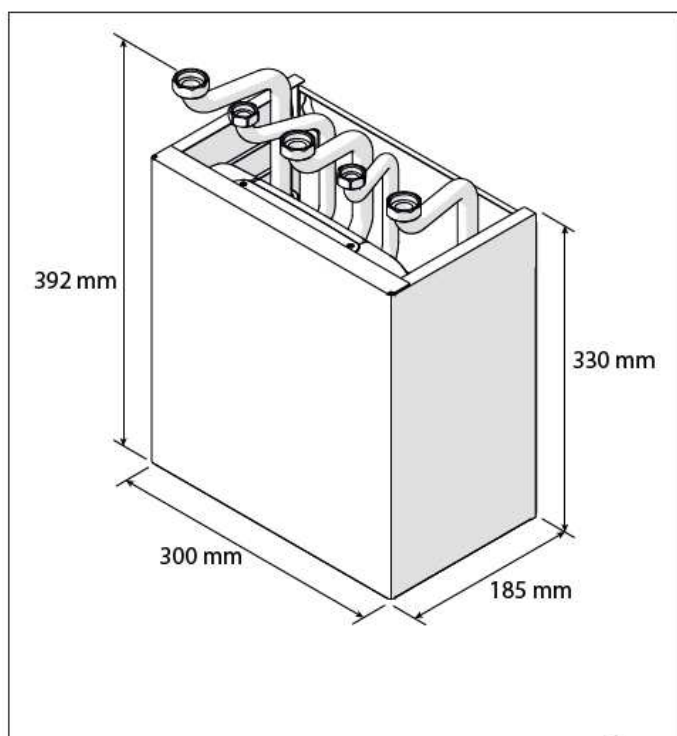
HYBRID UNIVERSAL R32

Proiectat pentru a fi compatibil cu orice tip de centrala murala pe gaz deja existanta (combi sau system) si comanda TA

DETALII CONSTRUCTIVE UNITATE MODUL

Nimbus Hybrid Module NET R32 (1/2)

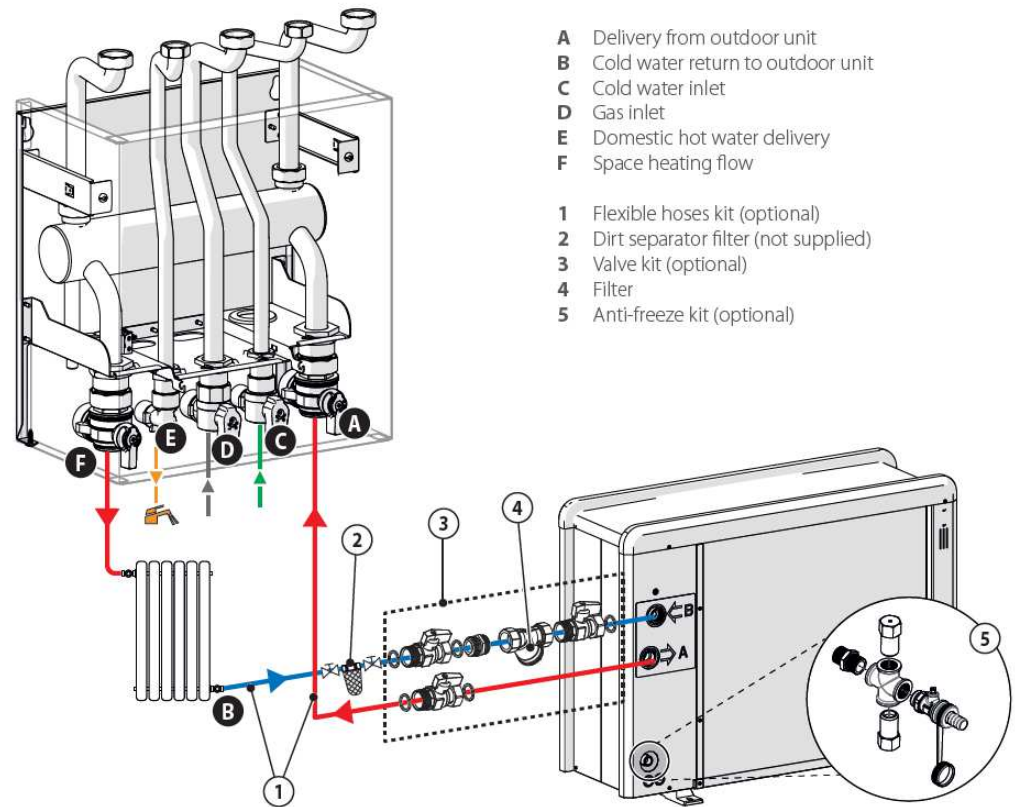
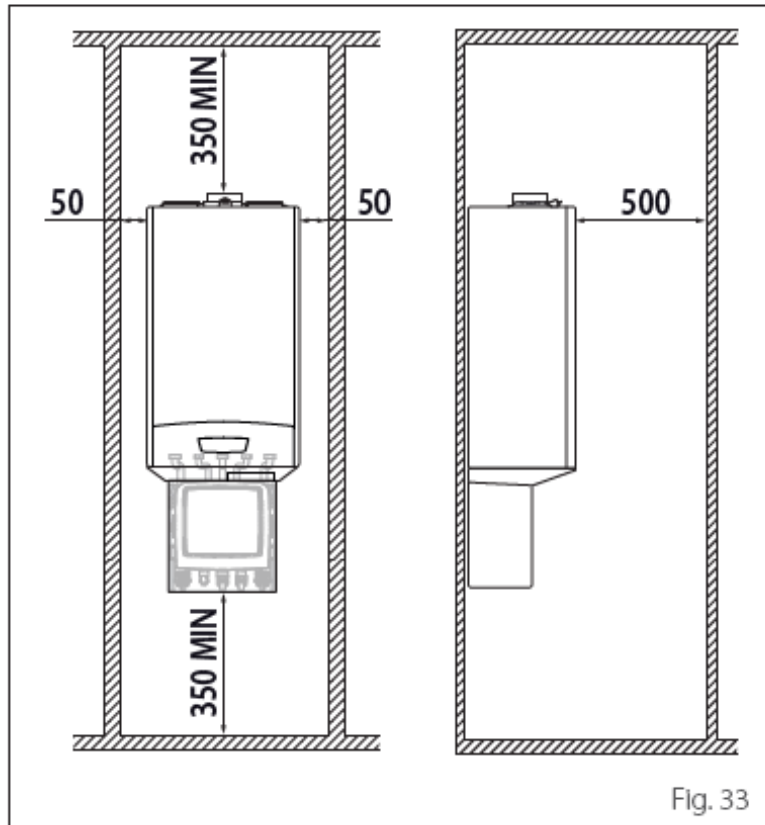
Indoor unit	Weight [kg]
NIMBUS HYBRID MODULE R32	7



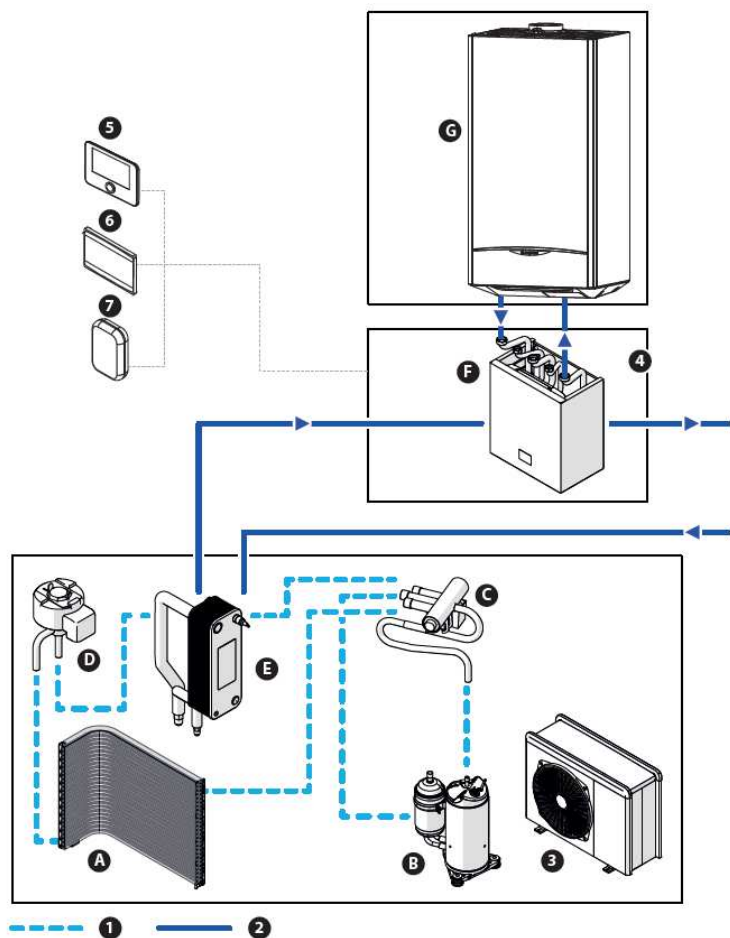
- 1 Delivery pipe from boiler
- 2 Domestic hot water pipe (*)
- 3 Gas pipe
- 4 Domestic cold water pipe (*)
- 5 Return pipe to boiler
- 6 Manifold
- 7 Delivery valve from outdoor unit
- 8 Mains water valve
- 9 Gas valve
- 10 Domestic hot water coupling
- 11 Heating system delivery valve
- 12 Immersion temperature sensor (flow)
- 13 Drainage valve
- 14 Hybrid Manager

DETALII CONSTRUCTIVE UNITATE MODUL Nimbus Hybrid Module NET R32 (1/2)

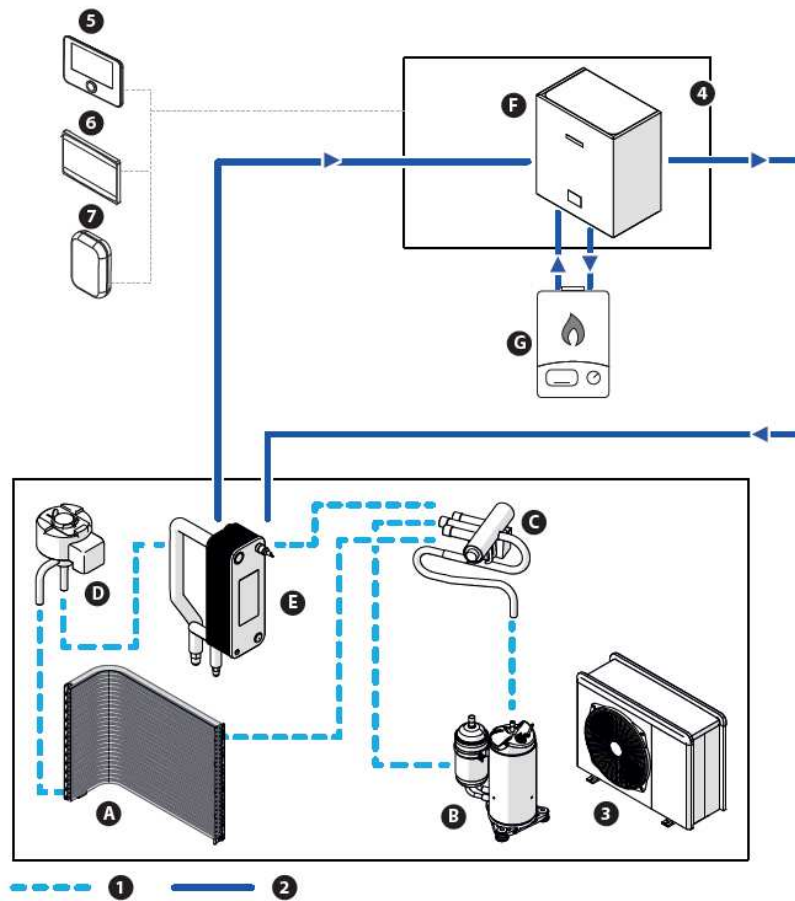
Minimum installation distances



Descriere sistem hybrid monobloc - Nimbus



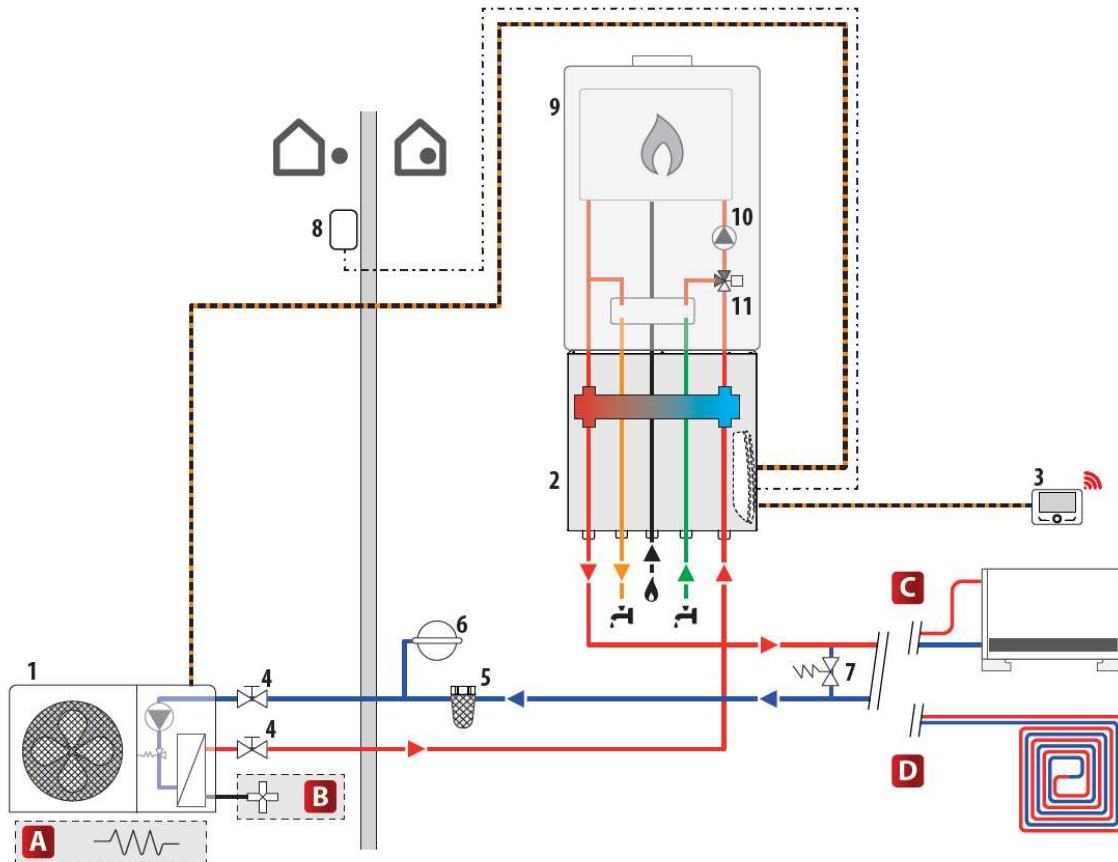
Descriere sistem hybrid monobloc - universal



- 1 R32 refrigerant circuit
- 2 Water supply distribution network
- 3 Outdoor unit
- 4 Indoor unit
- 5 Master User Interface
- 6 Gateway
- 7 Outdoor Sensor

- A Finned heat exchanger
- B Compressor
- C 4-way valve
- D Expansion valve
- E Plate heat exchanger
- F Hybrid module
- G Heat generator

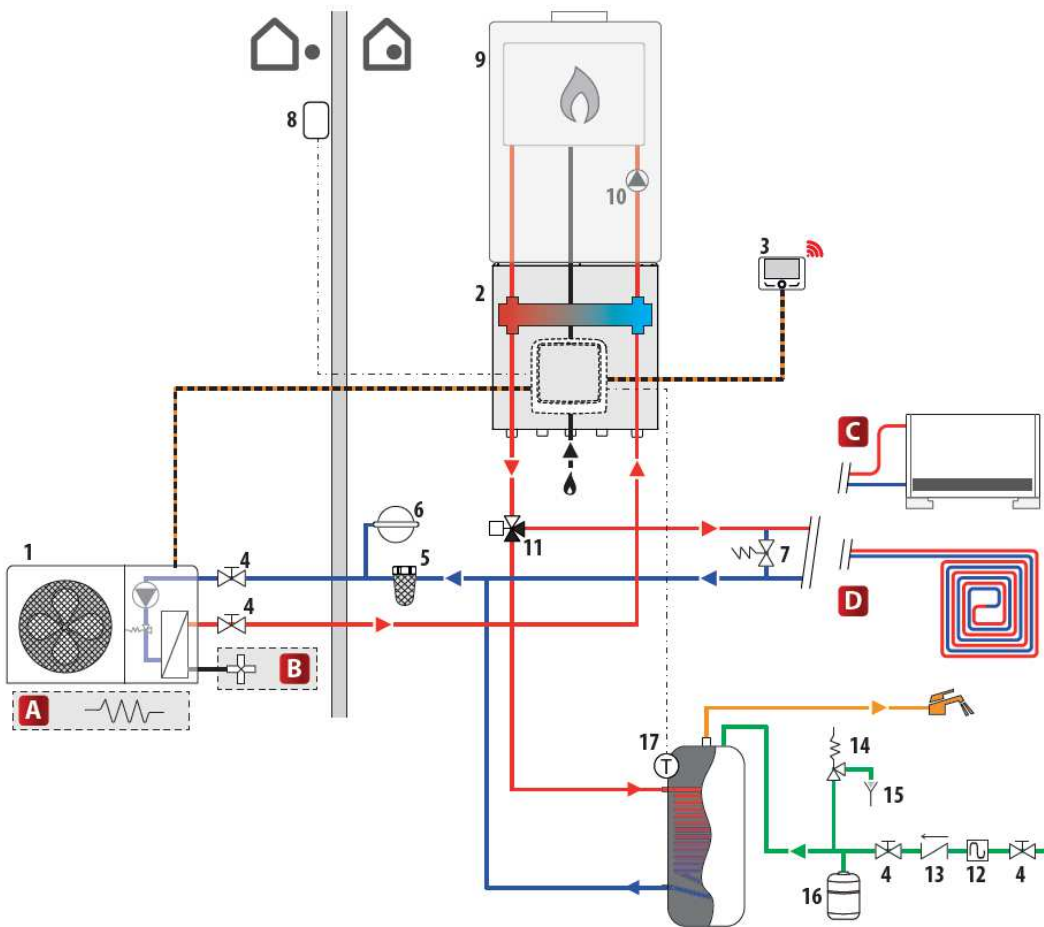
Schema sistem hybrid - CT Ariston combi



Symbol	Description
	System flow
	System return
	Communication connection
	Electrical connection
	Domestic cold water inlet
	Domestic hot water outlet

- 1 Outdoor unit
 - 2 Indoor unit
 - 3 SENSYS HD interface
 - 4 Shutter valve
 - 5 Sludge filter
 - 6 System expansion vessel
 - 7 Bypass (optional)
 - 8 Outdoor Sensor
 - 9 Combi boiler
 - 10 Circulation pump
 - 11 3-way valve
- A Tray heating element (accessory)
 B Anti-freeze kit (accessory)
 C Zone with high temperature space heating/low temperature cooling (fan coil)
 D Low-temperature heating/cooling zone with under-floor system

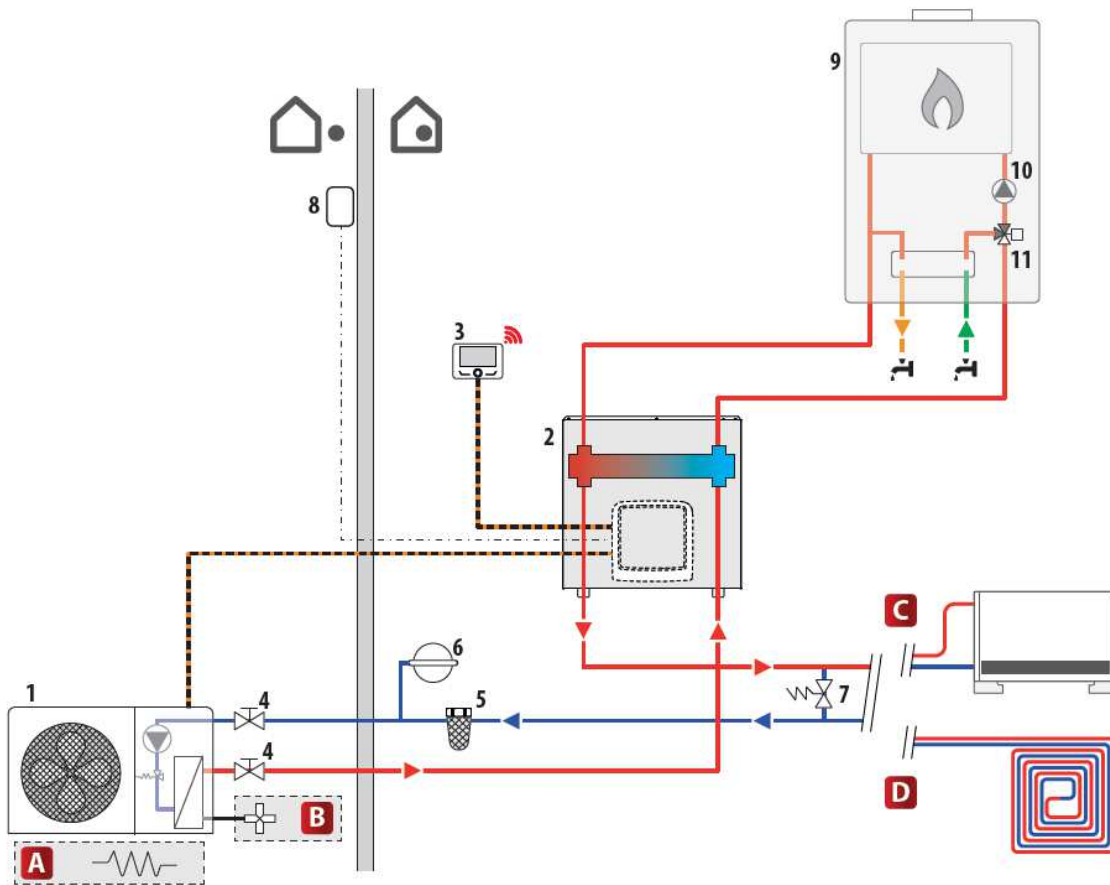
Schema sistem hybrid - CT Ariston system



Symbol	Description
	System flow
	System return
	Communication connection
	Electrical connection
	Domestic cold water inlet
	Domestic hot water outlet

- 1 Outdoor unit
 - 2 Indoor unit
 - 3 SENSYS HD interface
 - 4 Shutter valve
 - 5 Sludge filter
 - 6 System expansion vessel
 - 7 Bypass (optional)
 - 8 Outdoor Sensor
 - 9 System boiler
 - 10 Circulation pump
 - 11 3-way valve
 - 12 Siphon
 - 13 Non-return valve
 - 14 Safety valve
 - 15 Discharge outlet
 - 16 DHW expansion vessel
 - 17 NTC
- A** Tray heating element (accessory)
B Anti-freeze kit (accessory)
C Zone with high temperature space heating/low temperature cooling (fan coil)
D Low-temperature heating/cooling zone with under-floor system

Schema sistem hybrid – CT universal combi



Symbol	Description
	System flow
	System return
	Communication connection
	Electrical connection
	Domestic cold water inlet
	Domestic hot water outlet

- 1 Outdoor unit
 - 2 Indoor unit
 - 3 SENSYS HD interface
 - 4 Shutter valve
 - 5 Sludge filter
 - 6 System expansion vessel
 - 7 Bypass (optional)
 - 8 Outdoor Sensor
 - 9 Combi boiler
 - 10 Circulation pump
 - 11 3-way valve
- A Tray heating element (accessory)
 - B Anti-freeze kit (accessory)
 - C Zone with high temperature space heating/low temperature cooling (fan coil)
 - D Low-temperature heating/cooling zone with under-floor system



NIMBUS R32

ARE YOU READY FOR THE
FUTURE?