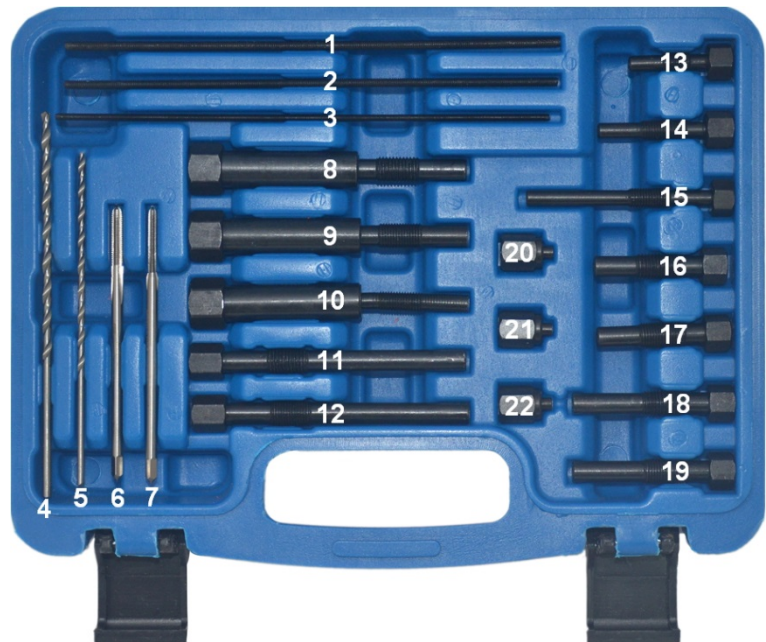


Glow Plug Electrodes Removal Tool Set, M8 / M10

TOOLS

- 1 Extractor spindle M4 x 0.7 x 100 mm
- 2 Extractor spindle M4 x 0.7 x 100 mm
- 3 Extractor spindle M3 x 0.5 x 100 mm
- 4 Twist drill 3.3 x 140 mm
- 5 Twist drill 2.5 x 120 mm
- 6 Screw tap M4 x 0.7
- 7 Screw tap M3 x 0.5
- 8 Spindle guide M10 x 1.25
- 9 Spindle guide M10 x 1
- 10 Spindle guide M8 x 1
- 11 Guide bolt M10x1.25 (3.5 mm)
- 12 Guide bolt M10x1 (3.5 mm)
- 13 Guide bolt M8x1 (3.5 mm)
- 14 Guide bolt M8x1 (2.5 mm)
- 15 Guide bolt M8x1 (2.5 mm)
- 16 Guide bolt M10 x 1 (4.5 mm)
- 17 Guide bolt M10 x 1.25 (4.5 mm)
- 18 Guide bolt M10 x 1.0 (3.5 mm)
- 19 Guide bolt M10 x 1.25 (3.5 mm)
- 20 Spindle nut M4 x 0.7
- 21 Spindle nut M4 x 0.7
- 22 Spindle nut M3 x 0.5



INTENDED USE

This tool kit is used to dismantle broken glow plug tips.

The included tools are suitable for glow plugs M8x1, M10x1 and M10x1.25.

SAFETY INSTRUCTIONS

- Use the tool for those jobs only for which it was designed.
- Always wear safety goggles and gloves when working with this tool.
- After completion of the repair work, make sure all tools have been removed from the engine compartment.
- Remove the ignition key to prevent the engine from being inadvertently started.
- Do not use the tool if any parts are missing or damaged.

USE

Glow plug bodies with hexagonal drive and electrical connection can be dismantled.

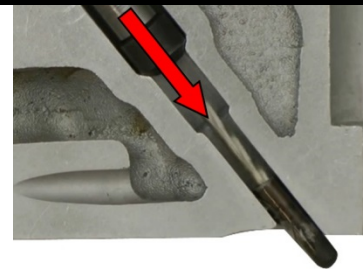
After breaking, the glow plug tip stays in the cylinder head and can only be removed by means of this tool or after dismantling the cylinder head.



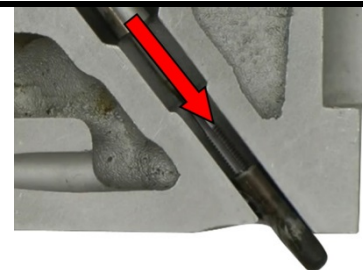
Install suitable guide bolt (11-19) for drilling.
The guide bolt must be chosen according to the length, inside diameter and diameter of the thread or drill.



Bore up the glow plug tip with an appropriate twist drill.
The size of the twist drill depends on the glow plug tip.
Twist drill 2.5 x 120 mm (5)
Twist drill 3.3 x 140 mm (4)



Remove the guide bolt and using suitable tap to make a thread into the glow plug tip.
The size of the tap depends on the size of the previously used twist drill.
Tap M3 x 0.5 (7) at twist drill 2.5 x 120 mm
Tap M4 x 0.7 (6) at twist drill 3.3 x 140 mm



Mount the extractor spindle into the thread of the glow plug tip.
Extractor spindle M4 x 0.7 x 100 mm (1 / 2)
Extractor spindle M3 x 0.5 x 100 mm (3)



Mount the spindle nut (20 / 21 / 22) onto the extractor spindle and screw the nut against the spindle guide, by using suitable tools.

The glow plug tip is pulling out upwards and can finally be removed from the extractor spindle.

