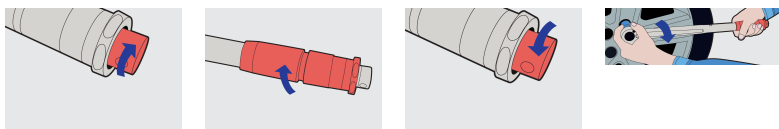


Click type torque wrench

264



Usage



Profiles



Product features

- reversible ratchet head
- Torque application: one-way, but always apply in direction specified on torque wrench handle
- ratchet operates in clockwise and anti-clockwise directions
- for tightening on right hand threaded bolts and nuts
- unmistakable signal when set torque is reached
- Default value for the recalibration interval is 12 month of use, or approximately 5.000 cycles!
- made according to standard ISO 6789
- dual scaled, Nm and Kgm

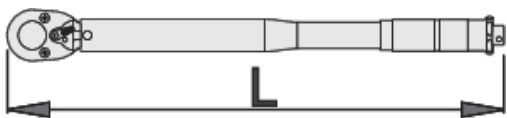
Important!





- Do not use torque wrench for untightening!
- Torque tightens only in the direction showed on the key sticker! Sticker shows the proper direction of tightening!
- The default calibration interval of the torque wrench is 12 months or 5.000 measurements from the date of end user purchase.

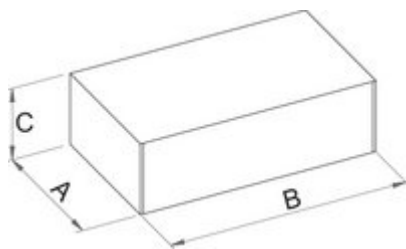
- ALWAYS set the measuring mechanism to starting point, at the end of work.
- When the requested torque is reached, please do not tight any more.
- Torque wrench can be damaged, if manual instructions are not considered.

Standards



ISO 6789



			L	
615485	1/4"	2 - 24	270	686
615486	3/8"	5 - 110	360	1100
615487	1/2"	28 - 210	465	1680
615488	1/2"	35 - 350	640	2930
615489	3/4"	70 - 560	840	5600
615490	3/4"	140 - 700	1070	8200
615491	1"	140 - 980	1220	8800



Retail packaging

	MA	MB	MC	
615485	315	72	72	686
615486	400	73	60	1100
615487	485	78	63	1680
615488	670	79	63	2930
615489	115	1250	115	5600
615490	115	1250	115	8200
615491	115	1250	115	8800