



**KOMO®**  
**Product certificate with attestation**  
**K77712/05**



Issued 2021-07-01 Replaces K77712/04  
 Valid until Indefinite Dated 2018-09-15  
 Page 1 of 23

Gentaş Exterior Compact laminates for façade cladding

**Gentaş A. Ş.**

**STATEMENT BY KIWA**

This quality statement for product certification with technical approval was issued on the basis of Evaluation Guideline 4101 part 1 " Gevelbekleding met panelen Deel 1: algemene eisen" in combination with part 4 "Gevelbekleding met panelen: aanvullende eisen voor decoratieve platen gebaseerd op thermohardende harsen", dated 18 December 2012 including amendment dated 31 December 2014, in conformity with the Kiwa Regulations for Product Certification.

The quality system and product characteristics associated with Gentaş Exterior decorative panels are checked periodically and the performance of Gentaş Exterior decorative panels in their application as cladding have been reviewed in relation to the Dutch Building Decree (Bouwbesluit) and the principles for the assessment are checked periodically.

On that basis Kiwa declares that:

- The Gentaş Exterior decorative panels manufactured by the certificate holder may be relied upon to meet:
  - The technical specifications laid down in this quality statement,
  - The product requirements laid down in the BRL and this quality statement, provided the Gentaş Exterior decorative panels have been marked with the KOMO® mark in the manner stated in this quality statement.
- The building components composed from the certified products may be relied upon to deliver a performance laid down in this quality statement and the building components meet the requirements of the Dutch Building Decree laid down in this quality statement, provided:
  - conditions and technical specifications laid down in this quality statement have been met;
  - the building components have been manufactured in accordance with the installation conditions laid down in this quality statement.

The essential characteristics, as defined in the applicable European standard, and the corresponding assessment of the quality system of these characteristics are not part of this statement.

Within the framework of this product certificate with technical approval no assessment is carried out on the composition and/or mounting in façades nor on the production of other products used for composition of the façades.

Ron Scheepers  
 Kiwa

*This product certificate with attestation is also included in the overview on the KOMO foundation website: [www.komo.nl](http://www.komo.nl). Users of this product certificate with attestation are advised to check whether it is still valid, for this purpose consult the website of Kiwa: [www.kiwa.nl](http://www.kiwa.nl).*

**Kiwa Nederland B.V.**  
 Sir Winston Churchilllaan 273  
 Postbus 70  
 2280 AB RIJSWIJK  
 The Netherlands  
 Tel. +31 88 998 44 00  
 Fax +31 88 998 44 20  
 info@kiwa.nl  
[www.kiwa.nl](http://www.kiwa.nl)

**Certificate holder**  
 Gentas A.S.  
 Dolanti sok 21  
 06160 SITELER-ANKARA  
 Turkey  
 T +90 312-3530206  
 F +90 312-3509917  
 I [www.gentas.com.tr](http://www.gentas.com.tr)



**BUILDING DECREE**

Assessed is:  
 • Quality system  
 • Product  
 • Single performance in the application  
 Periodic control

CERTIFICATE

474190911

Gentaş Exterior Compact laminates for façade cladding

TABLE OF CONTENTS

<b>1.</b>	<b>TECHNICAL SPECIFICATION.....</b>	<b>4</b>
1.1	SCOPE .....	4
1.1.1	Design and composition.....	4
1.1.2	Dimensions and tolerances.....	4
1.1.3	Color and surface structure.....	4
1.2	REQUIRED PRODUCT CHARACTERISTICS.....	4
1.3	PRODUCT CHARACTERISTICS .....	5
1.4	MARKING .....	5
1.5	SYSTEM SPECIFICATION.....	5
1.5.1	Substructure, general.....	5
1.5.2	Substructure, timber.....	6
1.5.5	Mounting structure, aluminum.....	7
1.5.6	Thermal insulation.....	8
<b>2.</b>	<b>PROCESSING .....</b>	<b>8</b>
2.1	GENERAL.....	8
2.1.1	Transport.....	8
2.1.2	Storage .....	8
2.1.3	Processing instructions .....	8
2.2	MOUNTING INSTRUCTIONS.....	8
2.3	REPAIRS .....	11
2.4	MAINTENANCE .....	11
<b>3.</b>	<b>PERFORMANCES .....</b>	<b>11</b>
3.1	Building Decree.....	11
3.2	TECHNICAL BUILDING REGULATIONS RELEVANT TO SAFETY .....	11
3.2.1	General strength of the structure, Building Decree section 2.1 .....	11
3.2.2	Limiting the occurrence of a fire risk situation, Building Decree section 2.8.....	12
3.2.3	Limiting the development of fire and smoke, Building Decree section 2.9 .....	12
3.2.4	Limiting the spread of fire, Building Decree section 2.10 .....	12
3.3	TECHNICAL BUILDING REGULATIONS RELEVANT TO HEALTH .....	12
3.3.1	Protection against external noise – new build, Building Decree section 3.1 .....	12
3.3.2	Protection against moisture, Building Decree section 3.5 .....	12
3.3.3	Limitation of the presence of hazardous substances and ionising radiation, Building Decree section 3.9 .....	12
3.3.4	Protection from rats and mice, Building Decree section 3.10.....	12
3.4	TECHNICAL REGULATIONS RELEVANT TO ENERGY EFFICIENCY .....	12
3.4.1	Energy efficiency – new build, Building Decree section 5.1 .....	12
3.5	OTHER PERFORMANCES .....	13
3.5.1	Displacement and distortion, BRL 4101 part 4 article 5.4 .....	13
3.5.2	Deformation due to heat and moisture, BRL 4101 part 4 article 5.5 .....	13
<b>4.</b>	<b>RECOMMENDATIONS TO INSTALLERS .....</b>	<b>13</b>
<b>5.</b>	<b>LIST OF DOCUMENTS* .....</b>	<b>13</b>
<b>6.</b>	<b>DRAWINGS .....</b>	<b>15</b>
6.1	HORIZONTAL SECTIONS 8 MM SLIDE SYSTEM.....	15
6.1.1	Detail 1 - Vertical joint .....	15
6.1.2	Detail 3 – External corner.....	16
6.1.3	Detail 5 – Internal corner.....	16
6.1.4	Detail 6 - Window Detail.....	17
6.2	VERTICAL SECTIONS 8 MM SLIDE SYSTEM .....	18
6.2.1	Detail 2 – Bottom detail .....	18
6.2.2	Detail 7 - Window Details .....	18



Gentaş Exterior Compact laminates for façade cladding

---

6.2.3	Detail 8 - Window Sill Details .....	18
6.3	HORIZONTAL SECTIONS RIVET SYSTEM .....	20
6.3.1	Detail 1 – Vertical joint .....	20
6.3.2	Detail 2 – Bottom detail .....	20
6.3.3	Detail 3 - External Corner.....	21
6.3.4	Detail 4 – Expansion point .....	21
6.3.5	Detail 5 - Internal Corner.....	21
6.3.6	Detail 6 - Window Detail.....	22
6.3.7	Detail 7 - Window Head Detail .....	23
6.3.8	Detail 8 - Window Sill Detail.....	23



Gentaş Exterior Compact laminates for façade cladding

1. TECHNICAL SPECIFICATION

1.1 SCOPE

Façade cladding systems to Evaluation Guideline 4101 "Gevelbekleding met panelen" (Façade cladding panels), part 1: "Algemene eisen" (General requirements) and Evaluation Guidelines 4101 "Gevelbekleding met panelen" (Façade cladding panels), part 4 "Aanvullende eisen voor decoratieve platen gebaseerd op thermohardende harsen" (Additional requirements for decorative panels based on thermosetting resins). The Gentaş Exterior decorative panels are suitable for use as decorative façade cladding of external partitions as specified in this KOMO quality statement.

1.1.1 Design and composition

Gentaş Exterior decorative panels are Decorative High Pressure Laminates (HPL) consisting of layers of fibrous material (paper) impregnated with thermosetting resins. Gentaş Exterior decorative panels have an integrated decorative pigment layer (colour). The following types are available:

- Gentaş Exterior decorative panels EDS: standard grade panels;
- Gentaş Exterior decorative panels EDF: fire retardant grade panels.

1.1.2 Dimensions and tolerances

Gentaş Exterior decorative panels are available in the following standard dimensions:

- 1300 x 2800 mm – 1300 x 3050 mm.

Gentaş Exterior decorative panels are available from 4-20 mm thickness as where the standard thicknesses are 6, 8 and 10 mm. The dimensional tolerances are in accordance with table 3.

1.1.3 Color and surface structure

Gentaş Exterior decorative panels have a light surface structure and are available in colours as mentioned in table 1.

Table 1: Available colours

Kleurcode	Beschrijving	Kleurcode	Beschrijving	Kleurcode	Beschrijving
3096	Alphina white	3155	Antrasit Gri	3263	Aqua (light blue)
3099	Dirty White	3158	New Burgundy	3294	Dark brown
3103	Ultra white	3159	Mocha (very light brown)	3307	Granite Grey
3104	Fildişi	3164	Coffe Mocha (dark brown)	3308	Emerald
3106	Bej	3167	Foreshore	4390	Red Bubinga
3107	Manolya	3168	Blade Grey	4513	Elm Tree
3108	Vanilya	3169	Navy Blue	4565	Swiss Elm
3127	Sunshine (yellow)	3190	Siyah	4572	New Wenge
3129	Rosso Evil (red)	3238	Darker Green	4584	Brown Swiss
3131	Lacivert (indigo blue)	3243	Ivory	4585	Chocolate Swiss Elm
3136	Azul Blue (light blue)	3246	Turquaz light	4601	Marmara Maple
3139	Orange	3253	Sandy	5544	Alumini
3140	Yeşil (green)	3254	Verde Limone (lighter green)	5628	Metallic Oxid
3143	Açık Yeşil	3255	Azurro	5629	Metallic Oxid
3144	Fıstık Yeşil (green)	3256	Cobalt	5630	Metallic Oxid
3146	Green	3257	Smoke Grey	5648	Copperfield
3153	Ofis Gri	3258	Arsenic		

1.2 REQUIRED PRODUCT CHARACTERISTICS

The statements in Chapter 4 of this quality statement for Gentaş Exterior decorative panels as application as cladding façades are only valid if the panels meet the conditions in Table 2.

Table 2: Conditions product characteristics Performance Building Decree

Properties	Standard	Requirement for the application
Fire class	NEN-EN 13501-1	EDS ≥ 10 mm: ≥ B-s1, d0 EDF ≥ 6 mm: ≥ B-s1, d0
Resistance to fixings	EN 438-7, 4.5	≥ 2000 N
Bending strength: - flexural strength transverse and longitudinal direction - flexural modules in transverse and longitudinal direction	EN 438-7, 4.8 EN-ISO 178 EN-ISO 178	≥ 80 MPa ≥ 9000 MPa
Resistance to climatic shock: - change in flexural strength, D <sub>s</sub> - change in MEF-flexural modules, D <sub>m</sub> - change in appearance	EN 438-7, 4.12: EN 438-2, 19 EN 438-2, 19 EN 438-2, 19 & 29	≥ 0,80 % ≥ 0,80 % ≥ rating 4
Durability, - resistance to wet conditions  - density	BRL 4101-4, 5.2.4 EN 438-2, 15  EN-ISO 1183-1	Increase in mass: ≤ 5 % (EGS-EDS) ≤ 8 % (EGF-EDF) Change in appearance: ≥ rating 4 ≥ 1350 kg/m <sup>3</sup>
Tensile strength: - transverse and longitudinal direction	EN-ISO 527-2	≥ 80 MPa



Gentaş Exterior Compact laminates for façade cladding

1.3 PRODUCT CHARACTERISTICS

The product meets the product requirements predefined in BRL 4101 part 4. In Table 3 the product characteristics that are part of this KOMO quality statement are listed. They comply with the values specified in the table.

Table 3: Other product characteristics

Properties	Standard	Requirement for the application
Tolerances on dimensions:		
- length	EN 438-2, 6	+ 10 / - 0 mm
- width	EN 438-2, 6	+ 10 / - 0 mm
- thickness: 5,0 mm ≤ t < 8,0 mm	EN 438-2, 5	± 0,40 mm
8,0 mm ≤ t < 12,0 mm		± 0,50 mm
12,0 mm ≤ t < 16,0 mm		± 0,60 mm
16,0 mm ≤ t < 20,0 mm		± 0,70 mm
20,0 mm ≤ t < 25,0 mm		± 0,80 mm
- flatness: 6 mm	EN 438-2, 9	≤ 5,0 mm
8 mm		≤ 5,0 mm
10 mm		≤ 3,0 mm
12 mm		≤ 3,0 mm
- straightness of edges	EN 438-2, 7	≤ 1,5 mm/m
- squareness	EN 438-2, 8	≤ 1,5 mm/m
Dimensional stability at elevated temperature:	NEN-EN 438-2, 17	
- change in length		≤ 0,20 %
- change in width		≤ 0,40 %
Resistance to impact by large diameter ball (shatter resistance)		
- drop height 1800 mm, diameter print	NEN-EN 438-2, 21	≤ 10 mm
Resistance to SO <sub>2</sub>	DIN 50018 / NEN-ISO 105-A02	≤ rating 4
Resistance to UV		
- blistering	BRL 4101-4, 5.3.3	none
- cracking	BRL 4101-4, 5.3.3	≥ rating 5
- change in colour	NEN-ISO 105-A02	≥ rating 3
- change in gloss	DIN 67530	≤ 50 %

1.4 MARKING

The Gentaş Exterior decorative panels shall be marked with the KOMO wordmark or logo.

The design of this mark shall be:

KOMO



wordmark

logo

Application of the mark: the KOMO mark and mandatory information shall be applied to each panel and/or packing unit.

Mandatory information on the label:

- number of the quality statement K77712;
- manufacturer's brand;
- production code to provide traceability (date, machine and/or shift number);
- nominal panel dimensions (length, width, thickness);
- colour code of the design;
- indication fire properties.

The brand and the production date is placed on the product and / or packaging and / or delivery of documents.

1.5 SYSTEM SPECIFICATION

1.5.1 Substructure, general

The structure consists of vertical posts with a ventilation column of at least 20 mm deep between the panel and the underlying structure. In order to obtain a flat façade a proper alignment of the support structure is necessary. The center-to-center distance of the posts ranges from 400 to 800 mm. This depends on the thickness of the panel and the number of horizontal fixing points.

The substructure of the façade cladding system should be sufficiently durable and sufficiently strong and stiff, and are to be connected with the building structure in such a way, that the stability of the cladding system is ensured and the loads acting thereon can be transferred to the building structure.

Static calculations for the determination of the dimensioning and fixings of the panel and the sub-structure, shall be executed in accordance with EN 1991, based on the notional value of the:

- dead weight of the panels;
- wind load;
- loads due to differences in temperature;
- loads due to imposed deformations;
- shock loads.

In the determination of the deflection the wind load may be multiplied by 0.7.



## Gentaş Exterior Compact laminates for façade cladding

Deflection of the panels may not exceed  $1/200 \times \text{span} / \text{mounting distance}$ .  
Edge distances and the number of fixing points are stated in paragraph 2.2.2, tables 5 and 6.  
General details are given in chapter 6 of this KOMO quality statement.

### 1.5.2 Substructure, timber

Constructions have to be made of rectangular timber (not plywood) which at least meets the following specifications:

1. The timber for the support structure shall have a minimum density of  $400 \text{ kg/m}^3$ .
2. The timber shall be classified under durability class 1 or 2, according to NEN-EN 350-1: 1994 (Durability of timber and timber based products – durability of solid timber – Part 1). The required durability can be obtained by thermal or chemical modification of the timber up till the core of the timber. Any timber preservation methods and / or fire retardant treatments must meet the requirements as stated in BRL 0601 (Timber preservation), 0605 (Modified timber) and BRL 0602 (Fire retardant treatment of wood and wood products using the vacuum and pressure method).  
The modified timber may not cause any damage to other parts of the supporting structure. With application of timber, modified according to the vacuum/pressure method, additional measures shall be taken to avoid water from entering the core of the timber.

#### **Remark**

*Processing of modified timber may cause a reduction in durability.*

3. The timber can be classified in a strength class in accordance with NEN-EN 338.
4. The moisture content of the timber shall not exceed 18 %, determined according to NEN 5461. To prevent rotting of timber, necessary measures must be taken to prevent a permanent moisture load.
5. The timber may not have any active degradation caused by larvae, insects and/or fungi.
6. Soft wood shall at least satisfy quality class C in accordance with NEN 5466.

#### **Dimensions timber support structure**

The timber support structure should be detailed in a way, that no ultimate limit state and serviceability limit state is exceeded during the reference period as a result of changes in the geometry.

#### **Remark**

*In the determination of the size of the timber cross-section(s), the presence of a necessary ventilation column with a depth of at least 20 mm and thickness of the insulating layer if present, must be taken into account. Especially with thermally modified wood a reduced pull-out resistance of the screws must be taken into account. In that case it therefor may be necessary to apply thicker members.*

#### **Fasteners timber support structures**

The timber support structure must be assembled with fixings that at least meet the requirements of the permissible deviations and basic requirements for class I according NEN-EN 14592. The fasteners for timber substructures must be made in stainless steel, type 1.4401 (AISI 316 = A4). The fasteners for aluminium substructures must be made in stainless steel, type 1.4301 (AISI 304 = A2).

### 1.5.3 Blind fixing

With this system the Gentaş Exterior decorative panels are mounted on aluminum mounting structure using hidden connecting clamps.

The aluminum mounting structure must be detailed in a way that the ultimate limit state and serviceability limit state is not exceeded during the reference period. In order to reduce the risk of screws undoing, aluminum profiles shall have a thickness of at least 2.5 mm.

#### **Remark**

*The strength and stiffness of the aluminum mounting structure shall be demonstrated mathematically and / or by dynamic wind resistance tests.*

The dowel to be used for this mounting system will have a blind rivet from itself and conic shaped double split mounting space. The dowel and other parts must be made of stainless steel material.

The dowel is carefully placed on the mounting space on the inside of the wall siding panel.

The recommended panel thickness is between 8 mm and 10 mm. The aluminum structure must be prepared so that no pressure must be applied to the Gentaş Exterior panel by the infrastructure. While performing the connections (drilling the hole, placing the rivet head) personnel which has been educated by the manufacturer must supervise the process.

This type of wall siding materials must be mounted by only educated expert personnel. It is required to cover the supporting profile connections of the structure with panels. Bottom holes must be drilled in the factory or under workshop conditions with special drilling equipment.

The number of dowels to be used must be determined according to the engineering requirements of the building. The dust in the hole left after drilling must be removed completely.

The nominal hole diameters drilled must be in accordance with hole diameters of the plugs used.

The depth of the dowel:

- Panels with 8 mm thickness 4 mm;
- Panels with 10 mm thickness 6 mm.

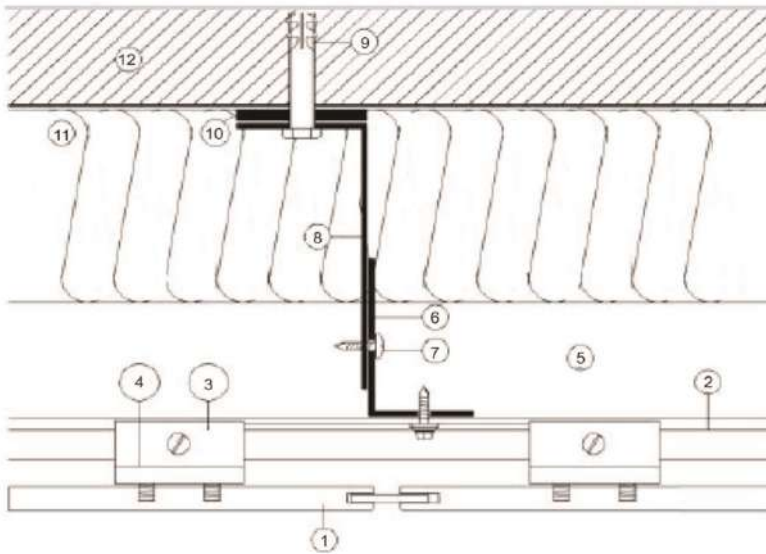
Plugs must be mounted in place using an instrument which is appropriate for this system. Random checks must be carried out on the holes which are chosen randomly. The following measurements must be carried out according to the information supplied by the manufacturer of the plugs and those measurements must be kept in recorded reports and documented accordingly:

- Cylindrical drill hole diameter;
- The diameter of the dowel which is cut from the bottom part;
- The examination of the upper part of the drill hole and the depth of the hole.

Eye examination is required to understand whether the Plug has entered the drilled hole in an appropriate manner or not. The side of the hole must sit on the clamp and must support itself strongly.

The construction manager or his representative must collect and keep the evidences showing whether the mounting operation carried out correctly or not.

Gentaş Exterior Compact laminates for façade cladding



1. Gentaş Exterior Panel
2. U Profile
3. Secret Joint Element
4. Compact Joint Screw
5. Ventilation Area
6. Aluminum T or P Profiles
7. Screw
8. Aluminum Anchorage
9. Stell Wall Plug
10. Insulator
11. Insulation
12. Wall

1.5.4 Blind fixing with rivets

It is the most widely used method for Ventilated Exterior Cladding systems in the world. It is a method of fixing Gentaş Exterior Cladding Panels on aluminum structure by means of appropriate rivets. While establishing the aluminum structure profile, national and international regulations must be taken into account. The aluminum support structure shall be detailed in a way that outermost limits or condition of use during the reference period will not be exceeded. To reduce the risk of unscrewing of fasteners, aluminium profiles shall have a thickness of at least 2.5 mm.

**Remark**

*The strength and stiffness of the aluminium support structure has to be demonstrated by means of calculations and /or tests.*

This aluminum structure is composed of support profiles basically mounted vertically to the wall. Due to the material characteristics of Gentaş Exterior panels, panels are affected by weather conditions especially from changes in temperature and humidity. As a result of these effects, minimal size changes can be observed. See also paragraph 1.3, table 3, dimensional stability at elevated temperature (changes in size at 70 °C and under 90% humidity). Values stated in Gentaş Exterior Technical Data Page must be taken into account by the users. Smoothly cut sides provide the balanced and smooth vision of a structure to which cladding is carefully applied. This cut may be carried out with Professional diamond cutters. When mounting panels it is required to leave at least an 8 mm gap taking size changes into account. In aluminum structures, you can use rivets with colours of panel colours.

Rivet shell: Al Mg 5

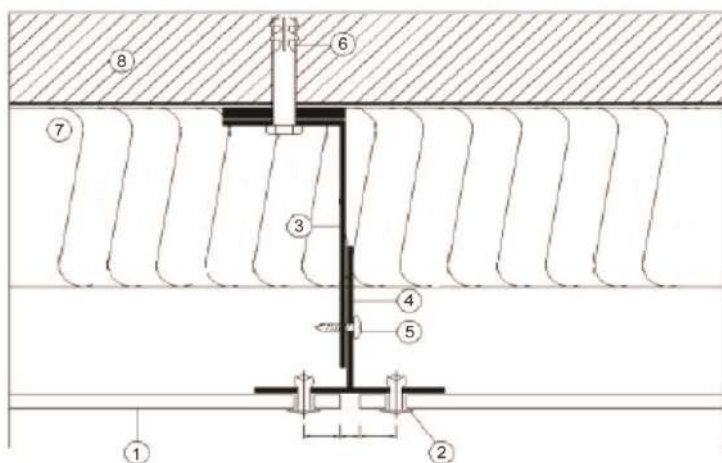
The resistance of rivet spindle against tension: 5,2 KN.

Diameters of holes to be drilled in Gentaş Exterior panels: 5,1 mm - 8 mm or required diameter.

The diameter of the hole to be drilled in aluminium infrastructures: 5,1mm.

The distance between rivets must be calculated in accordance with the engineering requirements of the construction. Unless recommended otherwise, in applicable regulations the following range can be recommended:

- For 6 mm: 45 cm – 60 cm;
- For 8 mm: 60 cm – 80 cm;
- For 10 mm: 70 cm – 90 cm.



1. Gentaş Exterior Panel
2. Rivet
3. Aluminum Anchor
4. Aluminum T or P Profiles
5. Screw
6. Steel Wall Plug
7. Insulation
8. Wall

1.5.5 Mounting structure, aluminum

The aluminium mounting structure must be detailed in a way that the ultimate limit state and serviceability limit state is not exceeded during the reference period.



## Gentaş Exterior Compact laminates for façade cladding

---

### **Remark**

*The strength and stiffness of the mounting structure of aluminum to be mathematically and / or by dynamic wind resistance tests are demonstrated.*

### **Fasteners aluminum mounting structure**

The manufacturer must determine the number of anchoring and fixing points, sizing and order of assembly. The attachments should be calculated and / or tested for wind forces (pull). The confirmation must be taken sufficient account of the material bound thermal length changes. The panels should as far as possible free of tension to be confirmed.

### **1.5.6 Thermal insulation**

Insulation in the shape of panels or blankets, whether or not featuring a coating, shall be processed in accordance with the manufacturers instructions or valid quality declaration granted by an Institute accredited by the Board of Accreditation (RVA). The type of insulation and thickness shall be tuned to the requirements by the Dutch Building Decree.

#### **Remark**

*The insulation shall be sufficiently watertight. It is advised to use a mineral wool with a waterproof coating. When using open joints higher demands shall be set on the water tightness of the insulation. With mineral wool a heavier coating shall be applied with a prolonged resistance to UV radiation.*

*In case battens are used, a WBO-membrane can be applied. In this case the insulation does not have to have a coating unless required by the open time of the insulation.*

### **1.5.7 Accessories**

Sealing profiles of aluminium, plastic or EPDM-rubber for sealing joints between panels shall be mounted tight and in the correct place. Sealing profiles may not be stapled but must be attached by means of glue for example. Bars, drip rails water and so on must be provided with recesses.

## **2. PROCESSING**

### **2.1 GENERAL**

#### **2.1.1 Transport**

During transport of the Gentaş Exterior decorative panels, sturdy and flat pallets shall be used of a size that is at least the same as panels. To prevent scratching, panels must be lifted and not slid across underlying ones. During manual handling like loading and unloading, panels shall be lifted one by one.

#### **2.1.2 Storage**

Gentaş Exterior decorative panels shall be stored on flat surfaces to avoid warping of the panels.

During storage, panels shall be protected against moist, strong changes in temperature, pollution and damaging

Panels should be stocked indoor in normal conditions between 45 and 70% ambient humidity and regular temperatures.

At the building site the panels shall be protected against moist rising from the ground. Panels preferably shall be stored horizontally, supported on the entire surface.

In case horizontal storage is not possible, than panels can be stored 'vertically' at an angle of 60-70° whereat the total surface will be supported.

In all cases the supporting surface shall be completely flat.

The top panel shall be stored with a protective sheet or board.

#### **2.1.3 Processing instructions**

Gentaş Exterior decorative panels shall be cut before use.

- Gentaş Exterior decorative panels can be machined in any shape of form with regular cutting equipment.
- It is recommended to use saws and chisels with carbide cutting edges.
- Panels must be cut with visible side facing upwards when using circular saws, downward with portable tools.
- When cutting panels to size, longer side of piece should coincide with the panel machine direction to ensure better panel stability.
- Preferably use machinery with fixed blades and moving tables.
- Use spacing papers or boards and make sure these do not contain splinters with reuse.
- Inside corners of, for example, openings shall have rounded edges with a minimum of 5 mm radius.

### **2.2 MOUNTING INSTRUCTIONS**

#### **2.2.1 General**

The mounting system refers to panels which are screwed to a timber or aluminium sub frame by means of screws. Several mounting methods (visible and invisible) are possible.

#### **2.2.2 Supporting structure**

The constructor shall determine the amount of anchoring and fixing points, the dimension of the supporting structure and the following order of mounting. The mounting and fixing points shall be calculated on loads as mentioned in paragraph 1.5.1.

For determination of the fixing points of the panels, tables 5 and 6 may be used.

Adequate information on the used fasteners shall be available. Especially on allowable stress, the accompanying deformations and the behaviour in time as a result of physical and chemical circumstances. In all cases, fasteners shall be corrosion proof

The fasteners for façade cladding shall be of stainless steel, type 1.4301 (AISI 304 = A2). Changes in dimensions due to thermal changes shall be taken into account. For this reason a panel shall be fixed with one fixed point, preferably in the middle. Other fixing points shall be expansion points. The fasteners for the fixed and expansion points will have to be pre-drilled with a drill conductor to realise the required expansion space.

In case of aluminum the holes in the panels and the supporting structure shall be pre-drilled at the same time by 'graduatedly' shaped drills. In case of mounting with rivets a special rivet washer shall be used which makes sure that rivets are mounted sliding.

Thermal changes in sizes shall be adequately taken into account. See also table 3, dimensional stability at elevated temperature (changes in measurements at 70 °C and 90% relative humidity). The panels shall be mounted free of stress as much as possible. To avoid deformation of the panels, over tightening of the screws shall be prevented.





Gentaş Exterior Compact laminates for façade cladding

**Screwed fixing points on timber members**

RVS Torx-screw (see figure 1):

- Panel thickness: 6 up till 10 mm;
- Shaft diameter: 4,8 mm;
- Hole diameter: 8 mm in panel.

RVS mounting screw with nylon washer and covering cap (see figure 2):

- Panel thickness: 6 tot 10 mm;
- Shaft diameter: 4,8 mm;
- Hole diameter: 8 mm in panel.

Countersunk screws are not allowed.

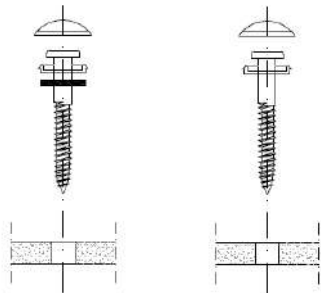


Figure 1.

Figure 2.

Table 4: Required hole diameters

Screw type	Hole diameter
Self centering RVS Torx—of mounting screw	8 mm
Pan head screw Ø 4 mm or Ø 5 mm, length at least 35 mm, head diameter 11 mm maximal	1,5x diameter screw

**Mounting distances**

Mounting distances shall be determined on basis of maximum deflection of the panels and the minimum pull out resistance of the screw as used. The pull out resistance of a screw in an aluminum member is better. Additionally the strength of a rivet is higher.

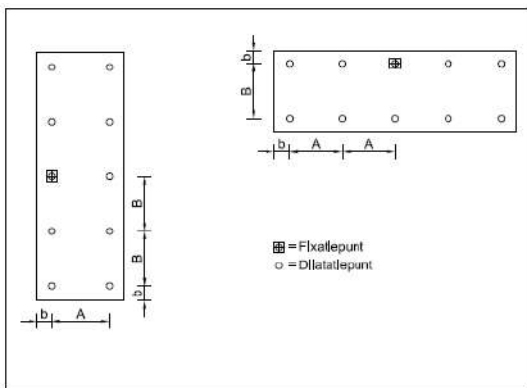


Figure 3: 2-point fixation

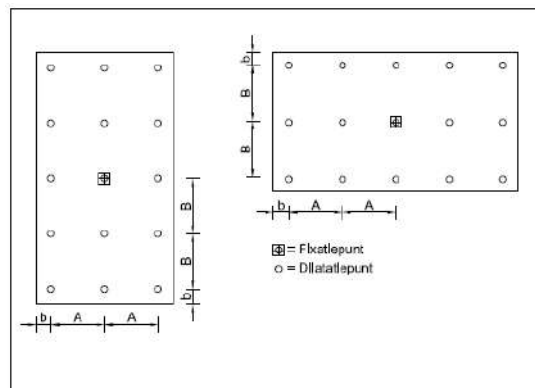


Figure 4: 3 or more point fixation

For a 6 mm panel, in tables 5 and 6 the maximum distances of fixation A and B in relation to the application area are given (building height per wind fastness area and terrain category). These distances are based on a timber supporting frame in accordance with paragraph 1.5.2.

Table 5: Maximum mounting distances 2-point fixation (A, B in mm) in relation to areas of application (building height in m)

Mounting distance <sup>1)</sup>		Wind area I			Wind area II			Wind area III	
A [mm]	B [mm]	coast [m]	unbuild [m]	build [m]	coast [m]	unbuild [m]	build [m]	unbuild [m]	build [m]
480	360	2	10	20	3	20	20	20	20
420	360	3	20						
360	360	6							
300	360	15							

Gentaş Exterior Compact laminates for façade cladding

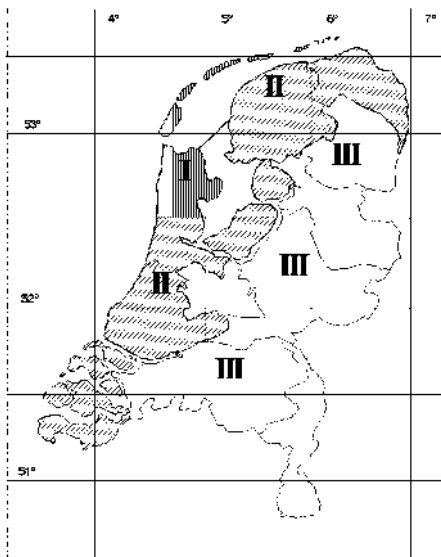
Table 6: Maximum mounting distances 3 or more point fixation (A, B in mm) in relation to areas of application (building height in m)

3 or more point fixation according figure 4									
Mounting distance <sup>1)</sup>		Wind area I			Wind area II			Wind area III	
A [mm]	B [mm]	coast [m]	unbuild [m]	A [mm]	B [mm]	coast [m]	unbuild [m]	A [mm]	B [mm]
420	360	2	10	20	5	10	20	10	20
360	360	4	20		10	20		20	
360	300	10							
300	300								

1) The mounting distances mentioned above are based on a timber substructure with a minimum density of the timber of 400 kg/m<sup>3</sup>.

**Remarks**

- As material factor  $Y_m$  of the screw 1,5 is held.
- For buildings higher than 20 m<sup>1</sup> an anchoring by means of screws shall be calculated. It is however advised not to use a timber substructure at buildings higher than 20 m<sup>1</sup>.
- Besides strength also mounting distances depend on requirements on flatness. For this reason, the following conversion factors may be applied:
  - 8 mm panel thickness: increase mounting distances A and B with a maximum of 1/3;
  - 10 mm panel thickness: increase mounting distances A and B with a maximum of 2/3;
- For grouping in wind areas and the determination of the areas a reference is made to Figure 5.



Wind area I:

Markermeer, de Waddeneilanden en Noord-Holland ten noorden van de gemeenten Heemskerk, Uitgeest, Wormerland, Purmerend en Edam-Volendam.

Wind area II:

Groningen, Friesland, Flevoland, de overige Noord-Hollandse gemeenten, Zuid-Holland en Zeeland.

Wind area III:

Drenthe, Overijssel, Gelderland, Utrecht, Noord-Brabant en Limburg

Figure 5: Grouping of the Netherlands in wind areas in accordance with NEN-EN 1991-1-4+NB.

**2.2.3 Ventilation**

For a proper application of panels a good ventilation behind the panels is indispensable. In order to remove any water by evaporation and drainage behind panels and the underlying wall / insulation layer:

- An uninterrupted cavity with a depth of at least 20 mm behind the panels.
- Ventilation openings at the top and bottom of façade with area:
  - $\geq 20 \text{ cm}^2$  /linear meter for height up to 1 m;
  - $\geq 50 \text{ cm}^2$  /linear meter above 1 m;
- Nesting of rats and mice behind the façade must be prevented. Openings wider than 1 cm for joints, where the panels meet other structures or for ventilation shall be fitted with closable screens.

**2.2.4 Instructions on joints**

**Open Joints**

When using horizontal or vertical open joints, high demands on the quality of the insulation material are set. In case of mineral wool a heavier coating shall be applied. This shall have a prolonged resistance to moist, high wind loads and UV radiation.

In case battens are used, a WBO-membrane can be applied. In this case the insulation does not have to have a coating unless required by the open time of the insulation.

Also additional demands shall be set on durability of the supporting structure. In case a timber supporting structure is used it shall be classified under durability class 1 or 2, according to NEN-EN 350-1: 1994 (Durability of timber and timber based products – durability of solid timber – Part 1).

**Closed joints**

A closed joint can be achieved by using various horizontal and vertical plastic or aluminium sealing profiles. Application of these profiles may not hinder the hygrothermal working of the panels.

Use of elastic kit for joints is not recommended since they may hinder the hygrothermal working of the panels. Furthermore the working life of the kit is limited and it may attract dirt more.

The type of seal used depends on how the panels are mounted.



Gentaş Exterior Compact laminates for façade cladding

2.3 REPAIRS

Repairs are only allowed by or under responsibility of the manufacturer.

2.4 MAINTENANCE

Areas of light dirt contamination can be cleaned with a towel, hot water or standard, non-abrasive cleaning agents. Areas of heavier dirt contamination may be cleaned with standard solvents. Always start by cleaning a small area first whilst observing any changes in appearance.

3. PERFORMANCES

3.1 Building Decree

Nr	article; sections	section	Limit/ determination method	Performance according to quality statement	Application notes
2.1	2.2 2.3 2.4; 1a, b, d en 2	General strength of the building structure	No collapse according: - NEN-EN 1990, - NEN-EN 1991 (own weight, - NEN-EN 1991-1-4 (wind) - NEN-EN 1995-1-5 (differences in temperature)	Suited for the application (situation and height building) Screw holding value $\geq 2000$ N	Joints to be made in accordance with paragraph 2.2.4
2.8	2.57	Limitation of the occurrence of a fire risk situation	Fire class A1 according NEN-EN 13501-1	The non-flammability is not determined	
2.9	2.67 2.68; 1 t/m 3	Limitation of the development of fire and smoke	The fire class and smoke class determined according to NEN-EN 13501-1 must be at least D respectively s2.	G-ext EDS, $\geq 10$ mm : B-s1, d0 G-ext EDF, $\geq 6$ mm: B-s1, d0	
2.10	2.84	Limitation of spread of fire	WBDBO (Resistance to Fire Penetration and Flash-over) determined according to NEN 6068 is minimal 30 min.	The panels shall not be assumed to limit the spread of fire	Performance depends on total partition
3.1	3.2 3.3	Protection from external noise, new buildings	Typical sound-proofing determined between outdoors and residential area $\geq 20$ dB(A) and between outdoors and residential room $\geq 18$ dB(A)	Typical sound-proofing is not determined	Performance depends on total partition
3.5	3.21; 1 t/m 3 3.22	Moisture proofing	Waterdicht, volgens NEN 2778 Temperatuurfactor $> 0,5$ of $0,65$ , volgens NEN 2778	Panels are watertight, joints are water resistant Temperature factor of the interior surface $> 0,5$ of $0,65$	Performance depends on total partition
3.9	3.63	Limitation of the presence of hazardous substances and ionising radiation	The cladding contains no hazardous substances or ionising radiation	Panels meet requirements	
3.10	3.69	Protection from rats and mice	No openings wider than 0.01 m	No openings $> 0,01$ m	
5.1	5.3 5.4 5.5	Energy efficiency, new buildings	Heat resistance $\geq 3.5$ m <sup>2</sup> K/W, determined according to NEN 1068.  Air volume flow rate of all the occupied areas, toilet and bathroom areas (0.2 m <sup>3</sup> /s, determined according to NEN 2686.	Contribution to heat resistance of panels with closed joints en cavity 0.3 W/m <sup>2</sup> K according NEN-EN 438-7 Panels do not contribute to limit of air flow volume	Performance depends on total partition

3.2 TECHNICAL BUILDING REGULATIONS RELEVANT TO SAFETY

3.2.1 General strength of the structure, Building Decree section 2.1

Building Decree, article; sections: 2.2, 2.3 en 2.4; 1a, b, d and 2.

The strength and stability of Gentaş Exterior decorative panels and the approved fixing systems are adequate to withstand the fundamental load combinations to NEN-EN 1991 for a reference period of 15 years without failure.

Tables 5 and 6 show the maximum actual wind load for different fixing distances and fasteners. These tables are based on Gentaş Exterior decorative panels with strength properties, a dimensional stability and durability in accordance with the values from Tables 2 and 3 of this KOMO® quality statement.

**Installation conditions**

- The processing instructions as mentioned in this KOMO quality statement shall be observed.
- Statically calculations for the façade cladding system shall be undertaken in accordance with NEN-EN 1990 in case of a composite support structures, NEN-EN 1999-1-1+NB for aluminium structures and EN 1995-1-1 for timber structures and the following requirements shall be observed:
  - the strength calculations for the façade panels are undertaken by or on behalf of the manufacturer or in accordance with the manufacturer's written instructions;
  - loads caused by fire need not be considered.
- Joints, fixings and anchors shall be made in accordance with a method described in this quality statement.
- The fixing distances shall be determined for each case separately in accordance with the selected fixing system (see the instructions in this quality statement).
- Additional provisions shall be made when fixing heavy objects and when installing the panels where they are subject to heavier loads, in consultation with the manufacturer.



## Gentaş Exterior Compact laminates for façade cladding

6. *Imposed deformation in the context of this quality statement is not determined. Gentaş Exterior decorative panels are to be used only in flat façades.*
7. *The resistance to impact load of the cladding, situated to 2.5 m above ground level, in the context of this KOMO quality statement is not determined. Where requirements in this regard, it must be determined whether additional requirements are met.*

### 3.2.2 Limiting the occurrence of a fire risk situation, Building Decree section 2.8

Building Decree, article; sections: 2.57.

The flammability has not been determined. At and in the vicinity of any fired appliance and in the vicinity of a smoke outflow provision, additional provisions shall be made to comply with article 2.57 of the Building Decree.

### 3.2.3 Limiting the development of fire and smoke, Building Decree section 2.9

Building Decree, article; sections: 2.67 en 2.68; 1 t/m 3

Gentaş Exterior decorative panels type EDS and EDF with a minimum panel thickness of 10 mm, are suitable for situations where a class B-s1,d0 is required.

Gentaş Exterior decorative panels type EDF with a minimum panel thickness of 6 mm, are suitable for situations where a class B-s1,d0 is required.

#### Installation conditions

1. *The exterior façade of a building up till a height of 13 m shall have combinations of building materials which meet at least Class D with the provision that the side facing escape routes shall be at least Class C.*
2. *The façade of a residential building of more than two floors shall have combinations of building materials of at least Class B fire spread to 2.5 m above the surface of the adjacent ground.*
3. *The façade of a non-residential building shall have combinations of building materials of at least Class B fire spread from a level of 13 m above the surface of the adjacent ground.*
4. *Materials and their combinations used for upstands lower than 1.5 m from the floor shall have at least Class C fire spread.*
5. *Situation where a smoke class s2 is required. This applies if the siding is located in the indoor air (for example, an atrium or shielded gallery).*
6. *Gentaş Exterior decorative panels shall not be used where 'non-flammability' is required.*
7. *The fire safety of timber and other support structures and any insulation used shall be assessed specifically in each case.*

### 3.2.4 Limiting the spread of fire, Building Decree section 2.10

Building Decree, article; sections: 2.84.

Single Gentaş Exterior decorative panels shall not be assumed to have any fire protection effect in terms of the breakthrough or transfer of fire in accordance with article 5.3 of NEN 6068.

## 3.3 TECHNICAL BUILDING REGULATIONS RELEVANT TO HEALTH

### 3.3.1 Protection against external noise – new build, Building Decree section 3.1

Building Decree, article; sections: 3.2 en 3.3.

Single Gentaş Exterior decorative panels shall not be assumed to have any noise attenuating properties.

#### Installation conditions

1. *In each case it shall be demonstrated, by calculations or testing to NEN 5077 or assessment on the basis of NPR 5070, that the external structure provides at least 18 dB(A) of noise attenuation.*
2. *When determining the noise attenuation the Gentaş Exterior decorative panels shall be disregarded.*

### 3.3.2 Protection against moisture, Building Decree section 3.5

Building Decree, article; sections: 3.21; 1 t/m 3 en 3.22.

The Gentaş Exterior decorative panels are watertight. In principle, the joint and connection details are not watertight. Occasionally drifting snow and rain may penetrate the ventilation openings to enter the cavity behind the façade panels.

The extent to which water can enter the cavity highly dependent on the details chosen. The water resistance must be realized by the finishing of the inside structure. With timber and limestone inner constructions a WDO-membrane shall be applied in accordance with NPR 2652. In case of concrete inner constructions occasional seams and connections at window frames shall be watertight.

#### Installation conditions

1. *The materials used shall meet the system specifications defined in this quality statement.*
2. *There shall be a ventilated air cavity with a width of at least 20 mm behind the façade panels (see also this quality statement).*
3. *The temperature factor of the inner surface of the external separation structure determined in accordance with NEN 2778 or NPR 2878 shall be at least 0.65 for residential buildings and at least 0.50 for non-residential buildings.*
4. *The design value of the heat conductivity coefficient ( $\lambda$ ) of the materials used shall be determined in accordance with NEN 1068.*

### 3.3.3 Limitation of the presence of hazardous substances and ionising radiation, Building Decree section 3.9

Building Decree, article; sections: 3.63

No harmful or objectionable substances are expected to be released.

### 3.3.4 Protection from rats and mice, Building Decree section 3.10

Building Decree, article; sections: 3.69

Openings wider than 1 cm for joints, where the panels meet other structures or for ventilation shall be fitted with closable screens.

## 3.4 TECHNICAL REGULATIONS RELEVANT TO ENERGY EFFICIENCY

### 3.4.1 Energy efficiency – new build, Building Decree section 5.1

Building Decree, article; sections: 5.3, 5.4 en 5.5

If there are any requirements concerning the thermal resistance (Rc) of the external separation structure as a whole then insulation shall be installed behind the Gentaş Exterior decorative panels.



## Gentaş Exterior Compact laminates for façade cladding

Gentaş Exterior decorative panels do not contribute to airtightness in accordance with NEN 2686. In case requirements are set, an airtight underlying construction shall be applied.

### Installation conditions

1. The thermal resistance ( $R_c$ ) of the external separation structure as a whole shall be determined in accordance with NEN 1068.
2. If the heat conductivity coefficients of the building materials used are not known then the design values shall be determined in accordance with NEN-EN 438-7.

## 3.5 OTHER PERFORMANCES

### 3.5.1 Displacement and distortion, BRL 4101 part 4 article 5.4

Given a fundamental load in accordance to EN 1991 the expected deflection shall be less than  $1/200$  x the distance between two fixings.

### Installation conditions

1. The required panel thickness, as a function of the fixing system, shall be determined in each case on the basis of the installation instructions of the fixing system (see this KOMO quality statement).
2. The installation conditions relating to "Structural safety" shall be complied with.

### 3.5.2 Deformation due to heat and moisture, BRL 4101 part 4 article 5.5

A design using details in accordance with this quality statement shall not lead to distortion which affects the aesthetic appearance or functionality of the panels.

### Installation conditions

1. The panel edges shall not be placed in water for extended periods.
2. The panels shall be free to expand along their length and across their width; consequently there shall be joints with a clear gap of at least  $2,5 \text{ mm/m}^1$  with a minimum of 8 mm along the edges of the panels.

## 4. RECOMMENDATIONS TO INSTALLERS

After delivery of the products listed under "Technical specifications" check if:

- the delivery corresponds with the order;
- the marks and their application are correct;
- the products do not exhibit visible damage due to transport, etc.

After delivery of the products listed under "Installation" verify if they comply with the stated specifications.

If, given the above, you reject the delivery, then contact:

- GENTAŞ A.Ş.
- and, if necessary:
- Kiwa Nederland B.V.

Store, transport and install the materials in accordance with the provisions of "Installation".

Observe the installation conditions listed under "Performance".

In the context of this statement will be no quality control, instead of the accuracy of the performance of the essential characteristics.

The statements in this quality statement shall not be used to replace the CE marking and / or the relevant mandatory Declaration of performance.

## 5. LIST OF DOCUMENTS\*

Bouwbesluit	Bouwbesluit 2012 Stb. 2011, 416, 676 en de Regeling Bouwbesluit 2012 Stb. 2012, 256.
DIN 50018	Prüfung im Kondenswasser-Wechselklima mit schwefeldioxidhaltiger Atmosphäre
DIN 67530	Reflektometer als Hilfsmittel zur Glanzbeurteilung an ebenen Anstrich- und Kunststoff-Oberflächen
NEN 1068	Thermische isolatie van gebouwen – Rekenmethoden, inclusief wijzigingsblad A5: 2008
NEN 2686	Luchtdoorlatendheid van gebouwen – Meetmethode, inclusief wijzigingsblad A2: 2008
NEN 2778	Vochtwerking in gebouwen – Bepalingsmethoden, inclusief wijzigingsblad A4: 2011
NEN 5077	Geluidwering in gebouwen – Bepalingsmethoden voor de grootheden geluidwering van uitwendige scheidingsconstructies, luchtgeluidisolatie, contactgeluidisolatie, geluidniveaus veroorzaakt door installaties en nagalmtijd, inclusief correctieblad C2: 2011
NEN 5461	Kwaliteitseisen voor hout (KVH 2000) - Gezaagd hout en rondhout - Algemeen gedeelte
NEN 5466	Kwaliteitseisen voor hout (KVH 2010) - Op uiterlijke kenmerken gesorteerd Europees naaldhout
NEN 6760	Technische grondslagen voor bouwconstructies - TGB 1990 - Houtconstructies - Basiseisen en bepalingsmethoden
NEN 6762	Stalen stiftvormige verbindingsmiddelen voor dragende houtconstructies
NEN 6068	Bepaling van de weerstand tegen branddoorslag en brandoverslag tussen ruimten
NEN-EN 350-1	Duurzaamheid van hout en op hout gebaseerde producten - Natuurlijke duurzaamheid van massief hout - Deel 1: Richtlijn voor de principes van het beproeven en het classificeren van de natuurlijke duurzaamheid van hout
NEN-EN 438-2	Decoratieve hoge-druk gelamineerde plaat (HPL) - Platen gebaseerd op thermohardende harsen (vaak laminaat genoemd) - Deel 2: Bepaling van de eigenschappen
NEN-EN 438-7	Decoratief hoge-druk laminaat (HPL) - Platen gebaseerd op thermohardende harsen (gewoonlijk Laminaat genoemd) - Deel 7: Compact laminaat en samengestelde panelen van HPL voor wand- en plafondafwerking binnen en buiten



Gentaş Exterior Compact laminates for façade cladding

NEN-EN 1990	Eurocode – Grondslagen van het constructief ontwerp, inclusief nationale bijlage NB:2011
NEN-EN 1991-1-4	Eurocode 1: Belastingen op constructies – Deel 1-4: Algemene belastingen – Windbelasting, inclusief nationale bijlage NB:2011
NEN-EN 1995-1-1	Eurocode 5: Ontwerp en berekening van houtconstructies – Deel 1-1: Algemeen – Gemeenschappelijke regels en regels voor gebouwen, inclusief nationale bijlage NB:2011
NEN-EN 12667	Thermische eigenschappen van bouwmaterialen en producten - Bepaling van de warmteweerstand volgens de methode met afgeschermd "hot plate" en de methode met warmtestroommeter - Producten met een gemiddelde en een hoge warmteweerstand
NEN-EN 13501-1	Brandclassificatie van bouwproducten en bouwdeelen – Deel 1: Classificatie op grond van resultaten van beproeving van het brandgedrag
NEN-EN-ISO 178	Kunststoffen - Bepaling van de buigeigenschappen
NEN-EN-ISO 527-2	Kunststoffen - Bepaling van de trekeigenschappen - Deel 2: Beproevingsomstandigheden voor pers-, spuitgiet- en extrusiekunststoffen
NEN-EN-ISO 1183-1	Kunststoffen - Methoden voor het bepalen van de dichtheid van niet-geschuimde kunststoffen - Deel 1: Dompelmethode, vloeistof pyknometermethode en titratiemethode
NEN-ISO 105-A02	Textiel - Beproeving van de kleurechtheid - Deel A02:Grijsschaal voor de bepaling van de kleurverandering
NPR 2652	Vochtwerking in gebouwen - Wering van vocht van buiten en wering van vocht van binnen - Voorbeelden van bouwkundige details
NPR 2878	Uitwendige scheidingsconstructies van gebouwen - Vereenvoudigde berekeningsmethode voor de binnenoppervlaktetemperatuurfactor
NPR 5070	Geluidwering in woongebouwen - Voorbeelden van wanden en vloeren in steenachtige draagconstructies
BRL 0601	Houtverduurzaming
BRL 0602	Brandvertragend behandelen van hout en houtproducten d.m.v. de vacuüm- en drukmethode
BRL 0605	Gemodificeerd hout
BRL 4101-1	Gevelbekleding met panelen. Deel 1: Algemene eisen
BRL 4101-4	Gevelbekleding met panelen. Deel 4: Eisen voor decoratieve platen gebaseerd op thermohardende harsen

\* For the correct version of the mentioned documents is referred to the latest publication of modifications with BRL 4101 part 1 and part 4.

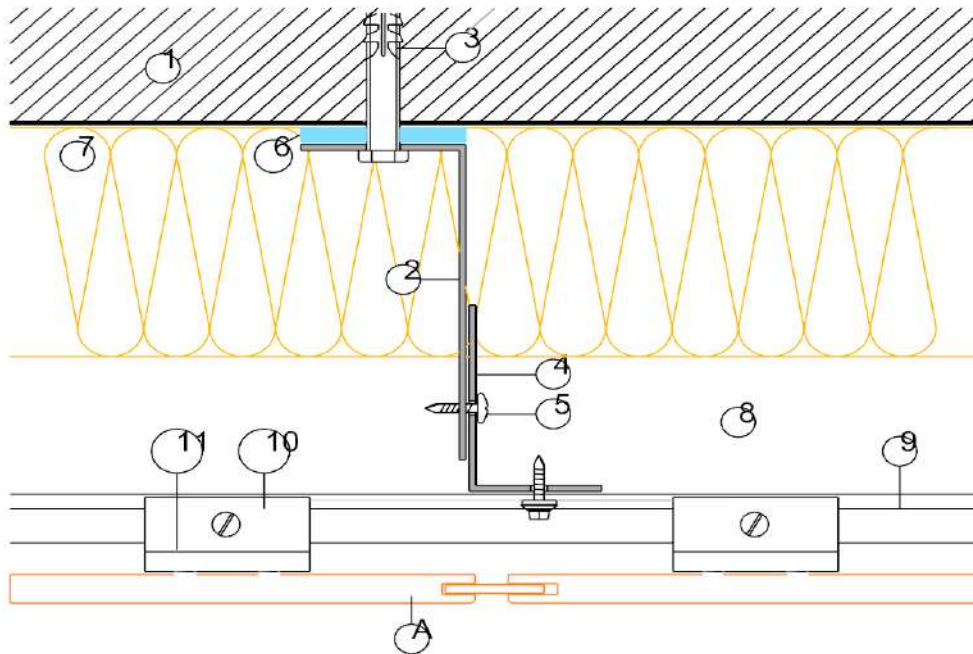
Gentaş Exterior Compact laminates for façade cladding

6. DRAWINGS

6.1 HORIZONTAL SECTIONS 8 MM SLIDE SYSTEM

6.1.1 Detail 1 - Vertical joint

Façade Details of Compact Laminate, 8 mm Slide System



HORIZONTAL SECTION

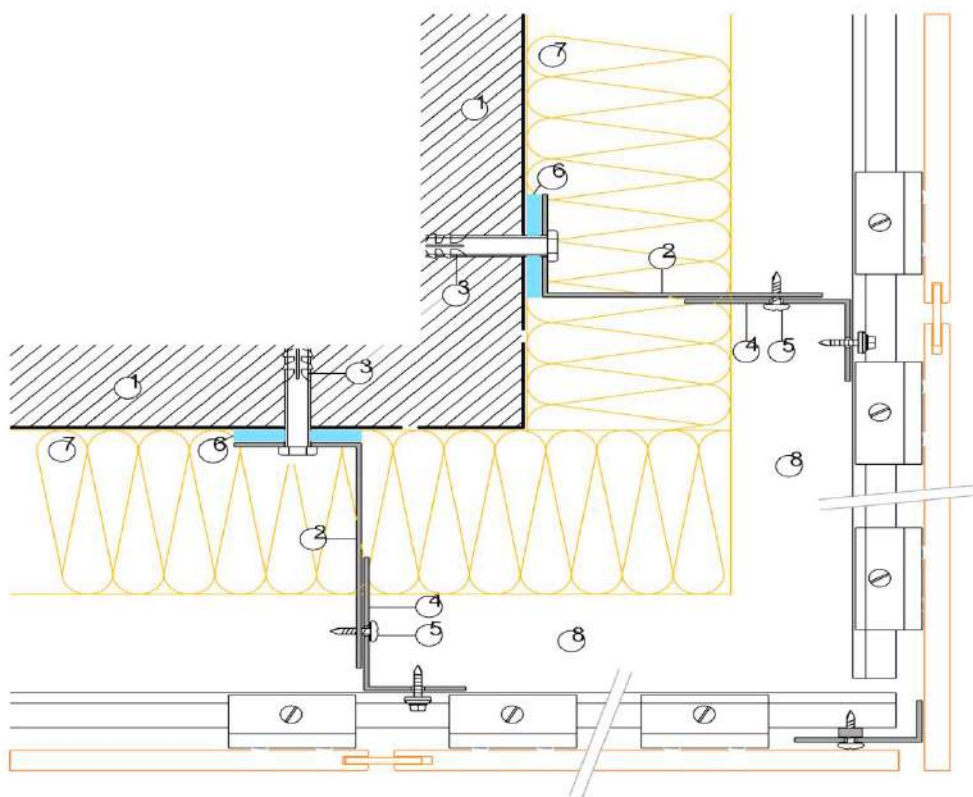
VERTICAL JOINT M = 1:2

- A. Compact Laminate Panel, thickness : 8 mm
- 1. Floor
- 2. Aluminium anchor, thickness : 3 mm
- 3. Chemical Wall Plug (In accordance with the type of wall )
- 4. Aluminium Shape T&L, thickness : 2 mm
- 5. 4.8 x 19 AKB MUV
- 6. Insulator
- 7. Insulator Material
- 8. Air gap of silicon
- 9. Horizontal U profile
- 10. Hidden Finish Connection Hanger
- 11. Compact connection screw

Gentaş Exterior Compact laminates for façade cladding

6.1.2 Detail 3 – External corner

Façade Details of Compact Laminate, 8 mm Slide System

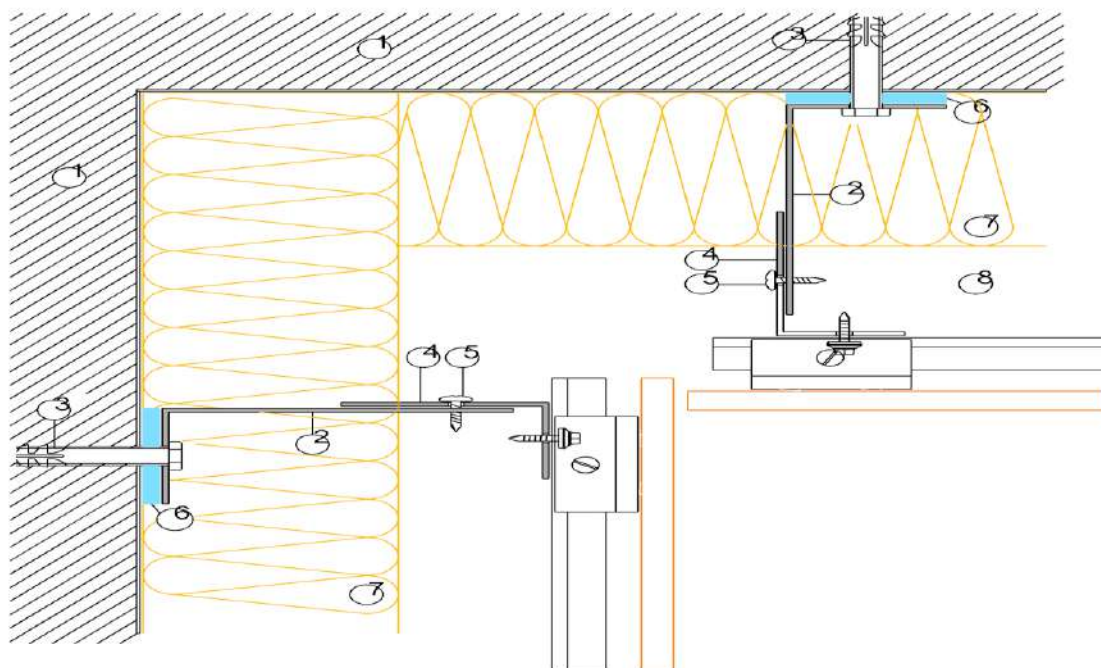


HORIZONTAL SECTION

EXTERNAL CORNER M = 1:2

6.1.3 Detail 5 – Internal corner

Façade Details of Compact Laminate, 8 mm Slide System



HORIZONTAL SECTION

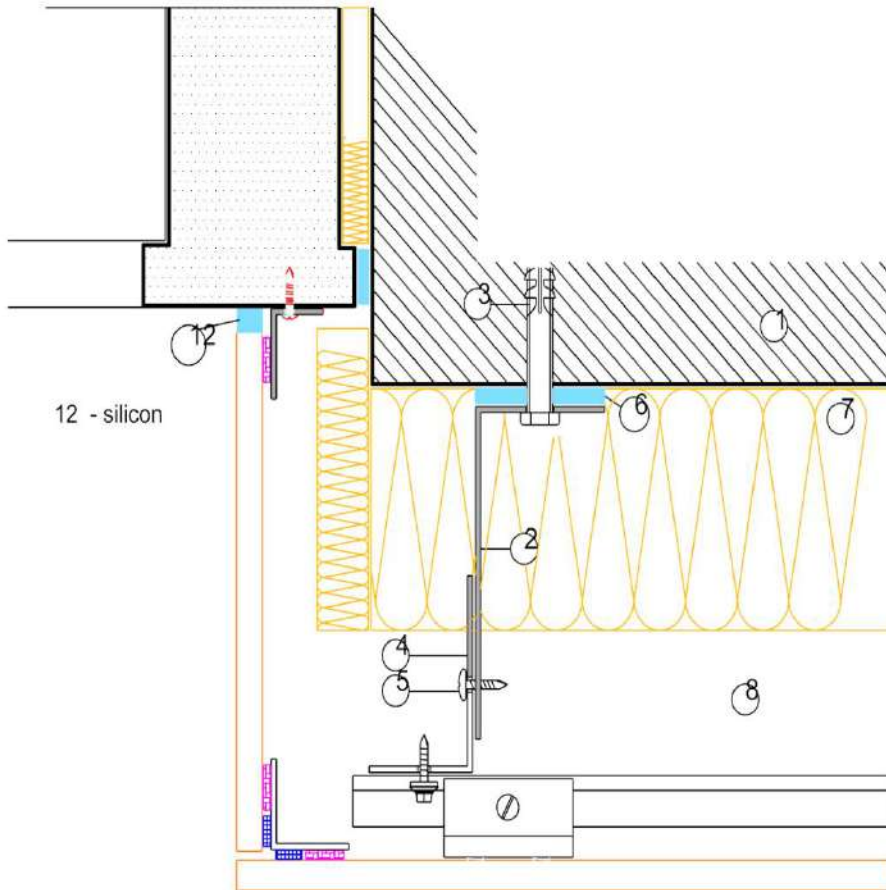
INTERNAL CORNER M = 1:2



Gentaş Exterior Compact laminates for façade cladding

6.1.4 Detail 6 - Window Detail

Façade Details of Compact Laminate 8 mm Slide System



HORIZONTAL SECTION

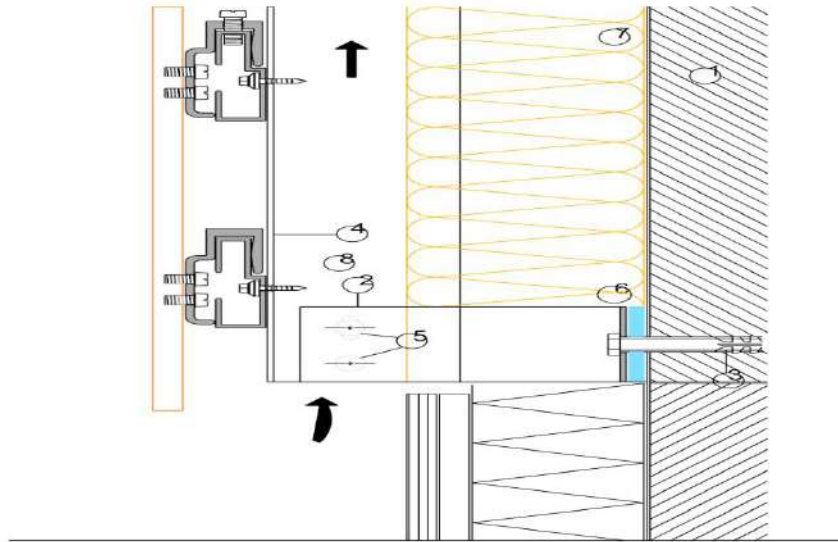
WINDOW DETAIL M = 1:2

Gentaş Exterior Compact laminates for façade cladding

6.2 VERTICAL SECTIONS 8 MM SLIDE SYSTEM

6.2.1 Detail 2 – Bottom detail

Façade Details of Compact Laminate, 8 mm Slide System

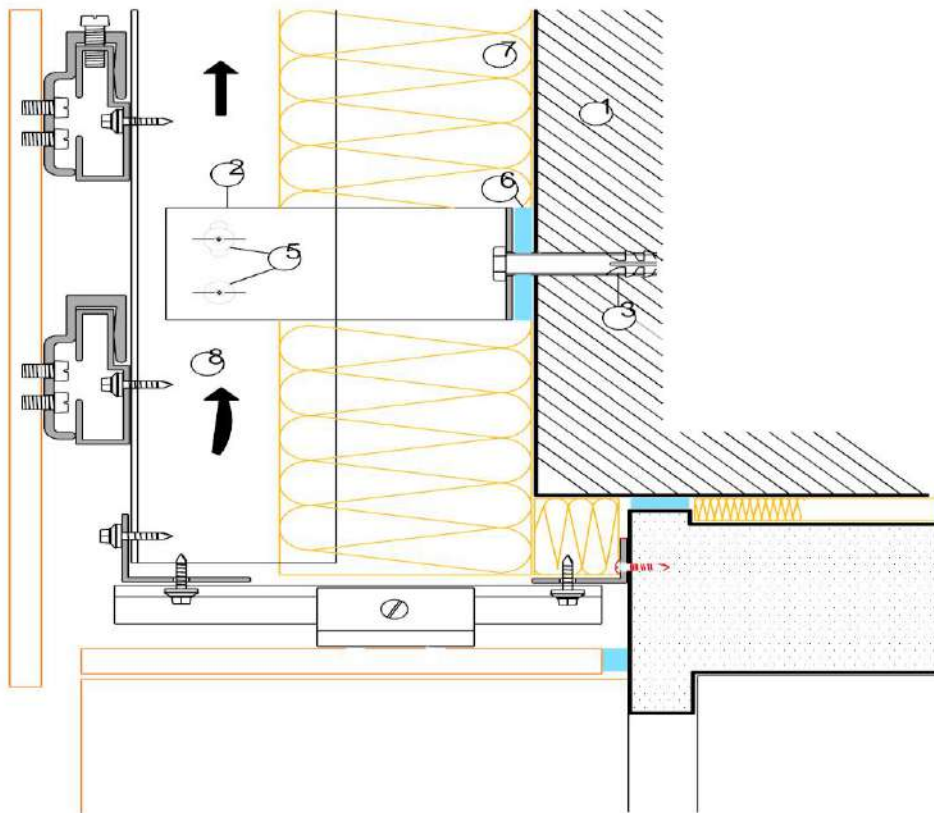


VERTICAL SECTION

BOTTOM DETAIL M = 1:2

6.2.2 Detail 7 - Window Details

Façade Details of Compact Laminate, 8 mm Slide System



VERTICAL SECTION

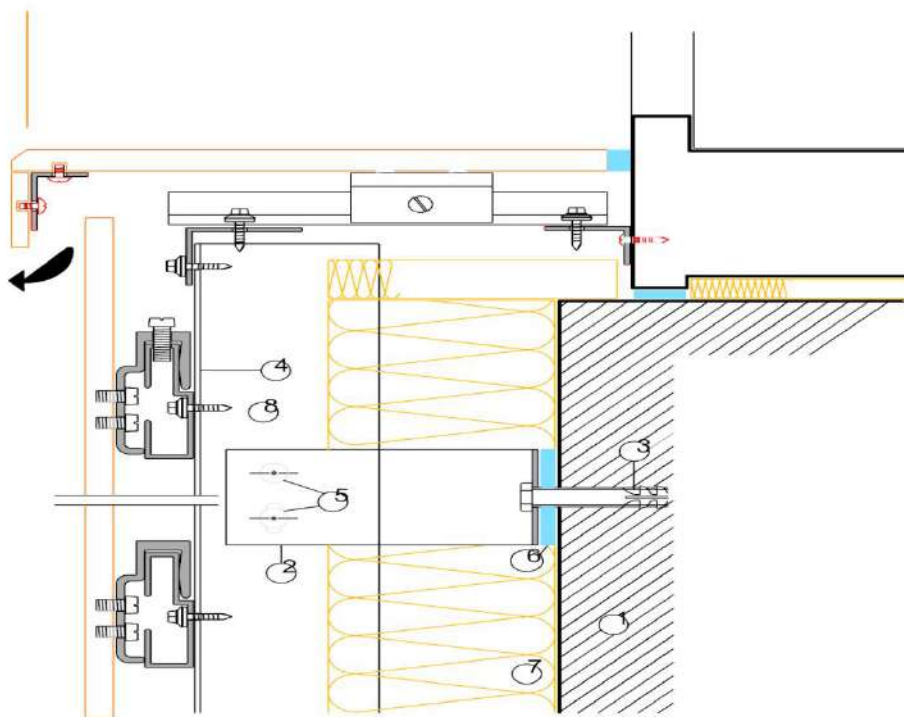
WINDOW DETAIL – HEAD M = 1:2

6.2.3 Detail 8 - Window Sill Details

Façade Details of Compact Laminate, 8 mm Slide System



Gentaş Exterior Compact laminates for façade cladding



VERTICAL SECTION

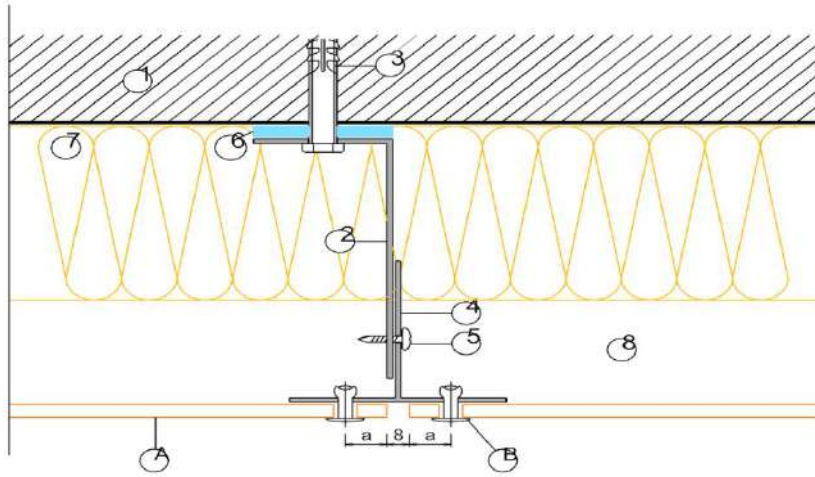
WINDOW DETAIL – SILL M = 1:2

Gentaş Exterior Compact laminates for façade cladding

6.3 HORIZONTAL SECTIONS RIVET SYSTEM

6.3.1 Detail 1 – Vertical joint

Ventilated HPL Façade Fixed with colour rivets



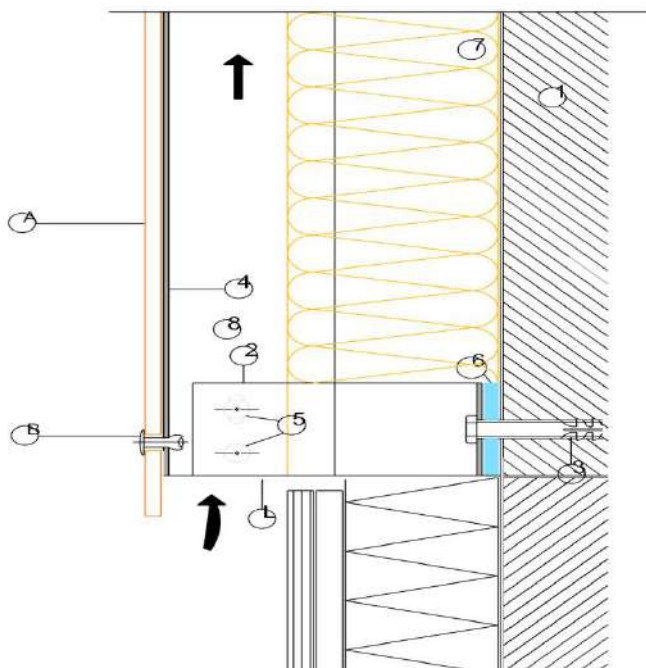
HORIZONTAL SECTION

VERTICAL JOINT M = 1:2

- A. PANEL. Thickness : 6 or 8 mm
- B. RIVET,
- C. ADHESIVE
- 1. Wall
- 2. Aluminium Shape, thickness : 3 mm
- 3. Expanding Fixing, (in accordance with the type of wall)
- 4. Aluminium T or L Profile
- 5. 4,5 x 19 AKB MUV
- 6. Insulator
- 7. Thermal Insulation
- 8. Ventilation

6.3.2 Detail 2 – Bottom detail

Ventilated HPL Façade Fixed with colour rivets



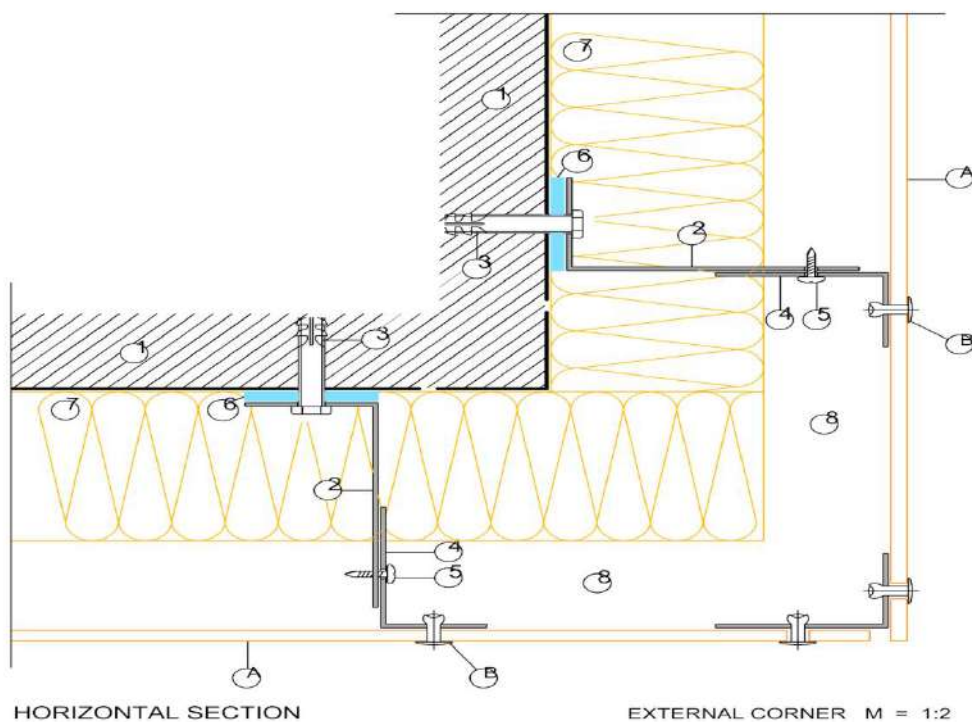
VERTICAL SECTION

BOTTOM DETAIL M = 1:2

Gentaş Exterior Compact laminates for façade cladding

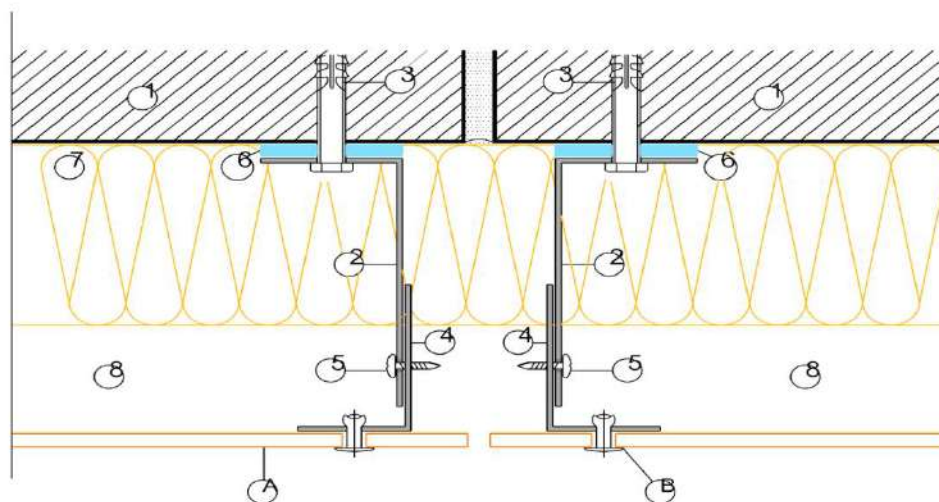
6.3.3 Detail 3 - External Corner

Ventilated HPL Façade Fixed with colour rivets



6.3.4 Detail 4 - Expansion point

Ventilated HPL Façade Fixed with colour rivets

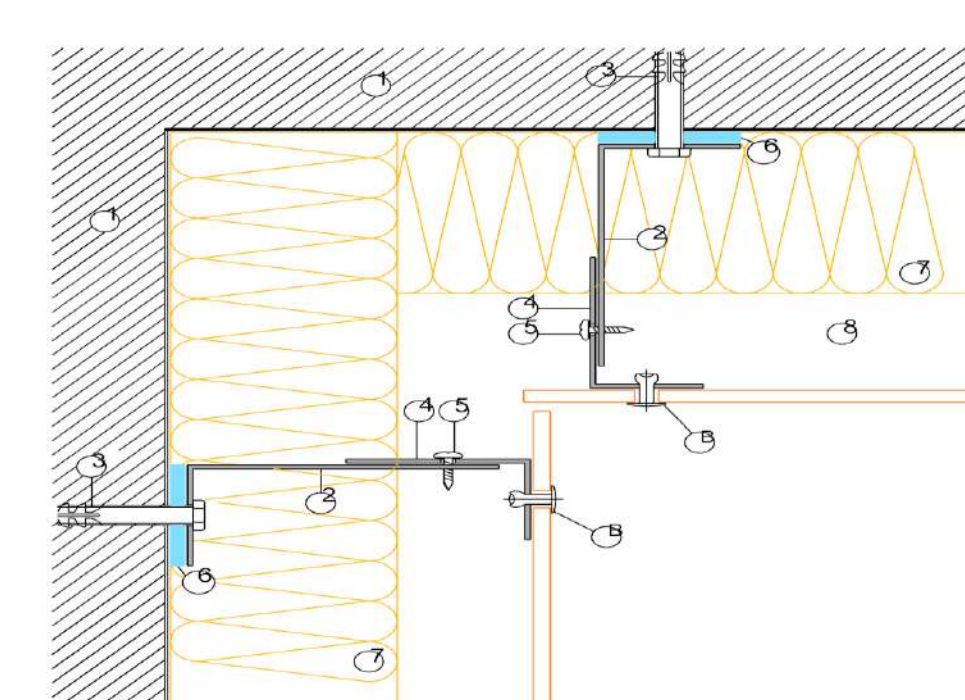


6.3.5 Detail 5 - Internal Corner

Ventilated HPL Façade Fixed with colour rivets



Gentaş Exterior Compact laminates for façade cladding

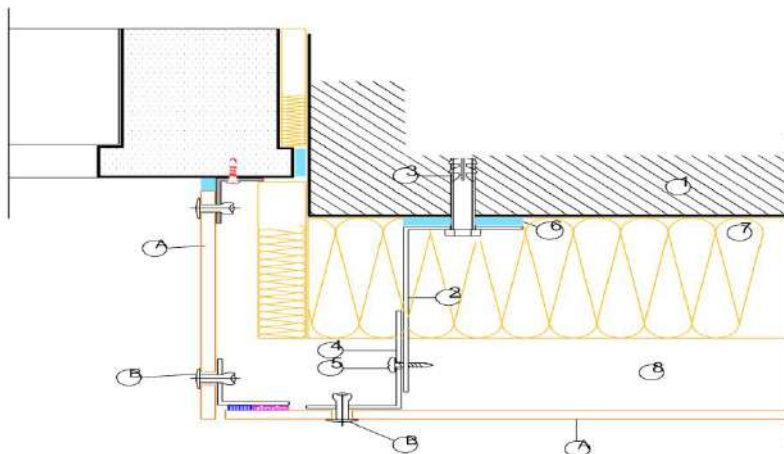


HORIZONTAL SECTION

INTERNAL CORNER M = 1:2

6.3.6 Detail 6 - Window Detail

Ventilated HPL Façade Fixed with colour rivets



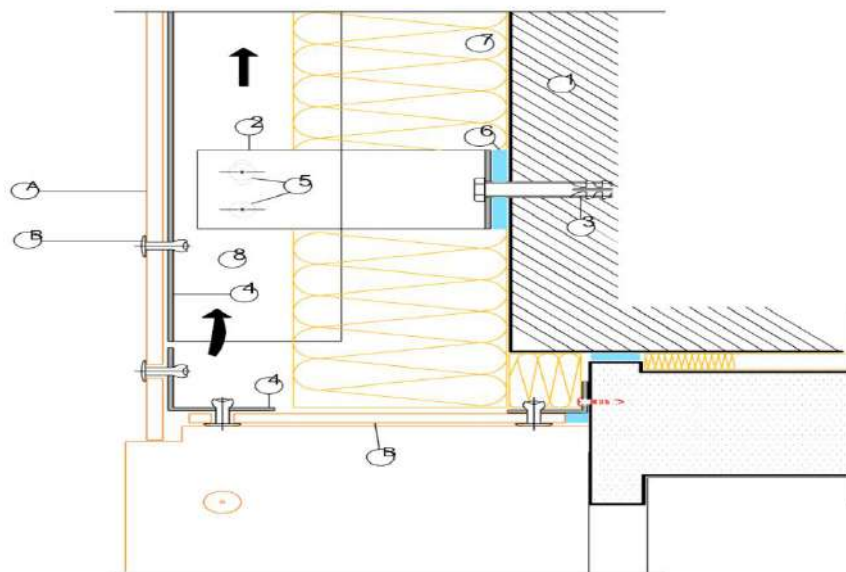
HORIZONTAL SECTION

WINDOW DETAIL M = 1:2

Gentaş Exterior Compact laminates for façade cladding

6.3.7 Detail 7 - Window Head Detail

Ventilated HPL Façade Fixed with colour rivets

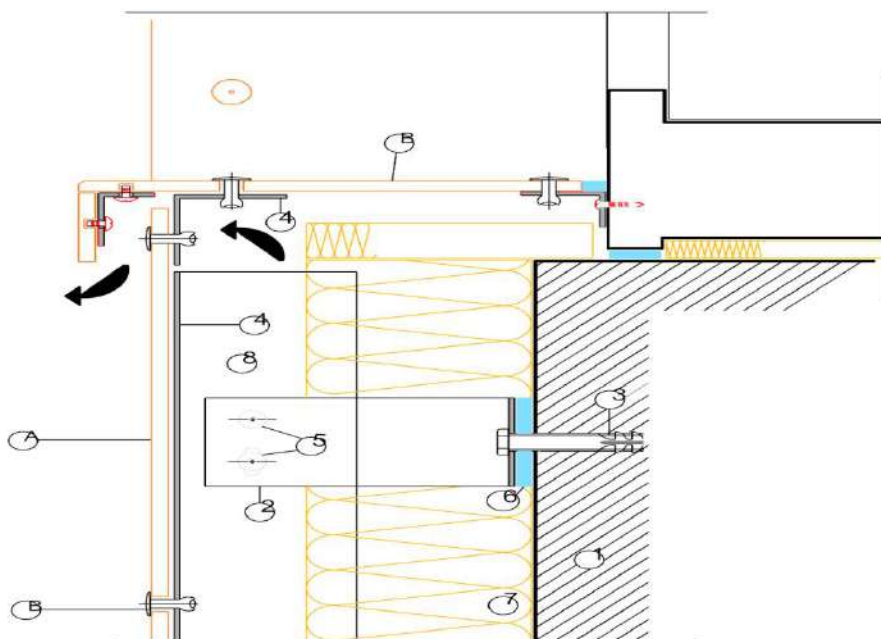


VERTICAL SECTION

WINDOW DETAIL - HEAD M = 1:2

6.3.8 Detail 8 - Window Sill Detail

Ventilated HPL Façade Fixed with colour rivets



VERTICAL SECTION

WINDOW DETAIL - SILL M = 1:2



## Factory production control FPC-48114/04



Issued 2017-09-15 Replaces 2014-01-01  
First issued 2008-11-01 Page 1 of 2

### Declaration of FACTORY PRODUCTION CONTROL

Kiwa has determined that

**GENTAŞ A.Ş.**

fulfils all provisions concerning the attestation of conformity and the performances described in Annex ZA of the standard EN 438-7:2005. The products fulfil all of the prescribed requirements.

**Product: Compact laminate and HPL composite panels for internal and external wall and ceiling finishes**

Luc Leroy  
Kiwa

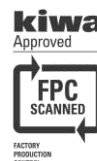
*Publication of this certificate is allowed.*

*Advice: consult [www.kiwa.nl](http://www.kiwa.nl) in order to ensure that this certificate is still valid.*

**Manufacturer**  
GENTAŞ A.Ş.  
Dolanti Sk No: 21  
Sitelere 06610 Ankara  
TURKEY  
T +90.312 353 02 06  
F +90.312 350 99 17  
E [gentas@gentas.com.tr](mailto:gentas@gentas.com.tr)  
I [www.gentas.com.tr](http://www.gentas.com.tr)

**Factory/Production site**  
GENTAŞ GENEL METAL SANAYI VE TICARET A.Ş.  
Serpek Mevkii 14841 Mengen/BOLU  
TURKEY  
T +90.374 356 18 78  
F +90.374 356 11 60  
F +90.374 356 11 59  
E [gentas@gentas.com.tr](mailto:gentas@gentas.com.tr)  
I [www.gentas.com.tr](http://www.gentas.com.tr)

**Kiwa Nederland B.V.**  
Sir Winston Churchilllaan 273  
Postbus 70  
2280 AB RIJSWIJK  
The Netherlands  
Tel. +31 88 998 44 00  
Fax +31 88 998 44 20  
[info@kiwa.nl](mailto:info@kiwa.nl)  
[www.kiwa.nl](http://www.kiwa.nl)



CERTIFICATE

563170424



Applicable to the products mentioned below, on a voluntary bases and in compliance with Regulation 305/2011/EU of the European Parliament and of the Council of 9 March 2011 (the Construction Products Regulation or CPR) it has been stated that the construction product

## Compact laminate and HPL composite panels for internal and external wall and ceiling finishes

Covering:

- |                      |       |          |       |              |       |
|----------------------|-------|----------|-------|--------------|-------|
| • G-Bio              | : CGS | • G-Eng  | : CGS | • G-Pheno    | : CGS |
| • G-Com              | : CGS | • G-Ext  | : EDS | • G-Skate    | : CGS |
| • G-Com AntiGraffiti | : CGS | • G-Lab  | : CGS | • G-Tech     | : CGS |
| • G-Com-Natura       | : CGS | • G-Line | : CGS | • G-Xray     | : CGS |
| • G-Com UV+          | : EDS | • G-Sign | : CGS | • Zero / PST | : CGS |
| • G-Digi             | : CGS | • G-Solo | : CGS |              |       |

produced by the manufacturer

## GENTAŞ A.Ş.

is submitted by the manufacturer to the initial type-testing of the product and a factory production control and that Kiwa has performed the initial inspection of the factory and of the factory production control and performs the continuous surveillance of the factory production control.

This declaration attests that all provisions concerning the attestation of factory production control described in Annexes ZA of the standard

## EN 438-7:2005

were applied, on a voluntary basis. This declaration was first issued on 01-11-2008 and will remain valid as long as the harmonised European standard remains valid or the manufacturing conditions in the plant or the factory production control itself are not modified significantly.

On the basis of this document the manufacturer is allowed to use the Kiwa FPC Label as shown on this page.



Certificate of  
constancy of performance  
**0620-CPR-45875/07**



Issued 2022-02-01 Replaces 0620-CPD-45875/06  
First issued 2008-11-01 Page 1 of 2

In compliance with Regulation 305/2011/EU of the European Parliament and of the Council of 9 March 2011 (the Construction Products Regulation or CPR), this certificate applies to the construction product

## **High-pressure decorative laminates (HPL)**

whereby the scope of construction product(s) is listed on page 2 of this certificate placed on the market under the name or trademark of

### **Gentas A.S.**

and produced in the manufacturing plant

### **GENTAŞ GENEL METAL SANAYI VE TICARET A.Ş.**

This certificate attests that all provisions concerning the assessment and verification of constancy of performance described in Annex ZA of the standard  
**EN 438-7:2005**

under system 1 for the performances set out in this certificate are applied and that the factory production control conducted by the manufacturer is assessed to ensure the **constancy of performance of the construction product**.

This certificate was first issued on 1 November 2008 and will remain valid as long as neither the harmonised standard, the construction product, the AVCP methods nor the manufacturing conditions in the plant are modified significantly, unless suspended or withdrawn by the notified product certification body.

Ron Scheepers  
Managing director

*Publication of this certificate is allowed.*

*Advice: consult [www.kiwa.nl](http://www.kiwa.nl) in order to ensure that this certificate is still valid.*

CERTIFICATE

**Kiwa Nederland B.V.**  
Sir Winston Churchillaan 273  
Postbus 70  
2280 AB RIJSWIJK  
The Netherlands  
Tel. +31 88 998 44 00  
Fax +31 88 998 44 20  
NL.Kiwa.info@Kiwa.com  
[www.kiwa.nl](http://www.kiwa.nl)

**Manufacturer**  
Gentas A.S.  
Dolanti sok 21  
06160 SITELER-ANKARA  
Turkey  
Tel. 312-3530206  
gentas@gentas.com.tr  
www.gentas.com.tr

**Manufacturing plant**  
GENTAŞ GENEL METAL SANAYI VE TICARET A.Ş.  
Serpek Mevkii 14841 Mengen/BOLU  
TURKEY  
Tel. +90.374 356 18 78  
gentas@gentas.com.tr  
www.gentas.com.tr

Notified Body No. 0620



## High-pressure decorative laminates (HPL)

### SCOPE

Interior and exterior grade Compact laminates with the reaction to fire classification **B-s1, d0**, with field of direct application:

- Compact high-pressure decorative laminate (HPL) panels for internal and external wall and ceiling finishes and
- Compact high-pressure decorative laminate (HPL) panels for internal and external suspended ceilings.

### Interior grade

- G-Fire :  $\geq 6$  mm, CGF - Interior Compact General-purpose Flame-retardant grade
- G-BIO :  $\geq 10$  mm, CGF - Interior Compact General-purpose Flame-retardant grade
- ZERO PST :  $\geq 10$  mm, CGF - Interior Compact General-purpose Flame-retardant grade

### Exterior grade

- G-Ext :  $\geq 6$  mm, EDF - Exterior Severe-use Flame-retardant grade
- G-Com UV<sup>+</sup> :  $\geq 6$  mm, EDF - Exterior Severe-use Flame-retardant grade

## CERTIFICATE OF REGISTRATION

This is to certify that:

### **Gentaş Dekoratif Yüzeyler Sanayi ve Ticaret A.Ş.**

**Registered Address:** Dolantı Sok. No:21 Siteler Ankara, Türkiye

**Central Office Address:** Mudurnu Yolu 5. Km Doğancı Köyü 14200 Bolu, Türkiye

has been assessed and certified as meeting the requirements of standard(s) :  
**FSC-STD-40-004 V3-1 EN Chain of Custody Certification; FSC-STD-50-001 V2-1 Certificate Holder Trademark Requirements for FSC® Chain of Custody Certification**

**Scope:** Purchase of FSC Mix - FSC Recycled and FSC Controlled Wood certificated paper for manufacture, storage, distribution and sale of FSC Mix and FSC Controlled Wood certificated High-Pressure Laminates (HPL), Continuous Pressure Laminates (CPL), including the outsourcing of impregnation process through credit system ;

**Type of Certification:** Single

**Method:** FSC Transfer System

**Certificate Number:** INT-COC-007227; INT-CW- 007227

For and on behalf of Interface NRM Ltd



**Dr. Gavin Jordan**  
Director, Interface NRM Ltd.

First Issue Date: 11.12.2023

Latest Issue Date: 11.12.2023

Certificate Expiry Date: 14.04.2026

Issue No: 1



The mark of  
responsible forestry

- The validity of this certificate and the list of products covered by this certificate should be verified at [www.info.fsc.org](http://www.info.fsc.org), Forest Stewardship Council®
- The certificate itself does not constitute evidence that a particular product supplied by the certificate holder is FSC certified (or FSC Controlled Wood).
- Products offered, shipped or sold by the certificate holder can only be considered covered by the scope of this certificate when the required FSC claim is clearly stated on sales and/or delivery documents.
- The certificate including all copies or reproductions is the property of Interface NRM Ltd and shall be returned or destroyed upon request.

Sites covered by this Certification:

Name	Address	Sub Code
Gentaş Dekoratif Yüzeyler Sanayi ve Ticaret A.Ş.	Dolantı Sok. No:21 Siteler Ankara, Türkiye	001
Gentaş Dekoratif Yüzeyler Sanayi ve Ticaret A.Ş.	Mudurnu Yolu 5.Km Doğancı Köyü Köyü Bolu,Türkiye	002
Gentaş Dekoratif Yüzeyler Sanayi ve Ticaret A.Ş.	Serpek Mevkii 14841 Mengen,Bolu, Türkiye	003

- The validity of this certificate and the list of products covered by this certificate should be verified at [www.info.fsc.org](http://www.info.fsc.org), Forest Stewardship Council®
- The certificate itself does not constitute evidence that a particular product supplied by the certificate holder is FSC certified (or FSC Controlled Wood).
- Products offered, shipped or sold by the certificate holder can only be considered covered by the scope of this certificate when the required FSC claim is clearly stated on sales and/or delivery documents.
- The certificate including all copies or reproductions is the property of Interface NRM Ltd and shall be returned or destroyed upon request.

## G-Com UV+ EDS Technical Data Sheet (1)

Characteristics	Test Method	Tested Value	Required Value
Thickness	EN 438-2 section 5		
	4 mm	4.1 mm	$3.0 \leq t < 5.0 \text{ mm} : \pm 0.3 \text{ mm}$
	6 mm	6.2 mm	$5.0 \leq t < 8.0 \text{ mm} : \pm 0.4 \text{ mm}$
	8 mm	8.1 mm	$8.0 \leq t < 12.0 \text{ mm} : \pm 0.5 \text{ mm}$
	10 mm	10.2 mm	$8.0 \leq t < 12.0 \text{ mm} : \pm 0.5 \text{ mm}$
	13 mm	13.4 mm	$12.0 \leq t < 16.0 \text{ mm} : \pm 0.6 \text{ mm}$
	18 mm	18.3 mm	$16.0 \leq t < 20.0 \text{ mm} : \pm 0.7 \text{ mm}$
	22 mm	22.3 mm	$20.0 \leq t < 25.0 \text{ mm} : \pm 0.8 \text{ mm}$ $25.0 \leq t$ : Agreement customer / producer
Density	ISO 1183 - 1	1.43	Min. 1.35 gr/cm <sup>3</sup>
Wear Resistance	EN 438-2 section 10		
	EDS / EDF	IP = 235 Rev. Wear Value = 400 Rev.	Initial Point $\geq$ 150 Rev. Wear Value $\geq$ 350 Rev.
Scratch Resistance	EN 438-2 section 25		
	EDS / EDF	> 3 N	Textured Surface Min. 3 N
Impact Resistance	EN 438-2		
	Büyük Bilye section 21		
	EDS / EDF	No Crack, 3.5 mm	1800 mm height : no crack , 10 mm Max.
t $\geq$ 6.0 mm			
Surface Crack @ 80°C 20 Hours	EN 438-2 section 24		
	CGS / CGF	Level 4	Min. level 4
Resistance to Dry Heat at 180°C	EN 438-2 section 16		
	CGS	Level 5	Min. level 4

## G-Com UV+ EDS Technical Data Sheet (1)

Characteristics	Test Method	Tested Value	Required Value
Resistance to Water Vapor	EN 438-2 section 14 EDS / EDF	Level 5	Min. level 4
Resistance to Boiling Water	EN 438-2 section 12 EDS / EDF $t \geq 5.0$ mm Textured Surface Finish	$\Delta W = 0.5\%$ $\Delta T = 0.4\%$ Level 5	Max. 2% in weight Max. 2% in thickness Min. Level 4
Resistance To Wet Condition ( Immersion in water 65°C; 48 Hours )	EN 438-2 section 15 EDS , EDF $t \geq 5.0$ mm	$\Delta W = 1.0\%$ Level 5	Max. 5% in weight Color change Min. level 4

## G-Com UV+ EDS Technical Data Sheet (2)

Characteristics	Test Method	Tested Value	Required Value
Resistance to Staining	EN 438-2 section 26 EDS , EDF Group 1 + 2	Level 5	Min. level 5
	Group 3	Level 5	Min. level 4
Flatness	EN 438-2 section 9 EDS , EDF $6.0 \leq t \leq 10.0$ mm	1.87 mm	Max. 3 mm / 1 M length
Light fastness	EN 438-2 section 27 <sup>(1)</sup> EDS , EDF Grey Scale <sup>(4)</sup>	Level 5	Min. level 4
Resistance To UV Light 3000 Hour	EN 438-2 section 28 <sup>(2)</sup> EDS , EDF Grey Scale <sup>(4)</sup> Zıtlık Dış görünüş	Level 4 Level 5	Min. level 3 Min. level 4
Resistance To Artificial Weathering 3000 Hour	EN 438-2 section 29 <sup>(1)</sup> EDS , EDF Grey Scale <sup>(4)</sup> Contrast Appearance	Level 4 Level 5	Min. level 3 Min. level 4
Dimensional stability at elevated temperature ( 70°C ; 90% RH )	EN 438-2 section 17 EDS , EDF $t \geq 5.0$ mm	L = 0.18% W = 0.36%	L : Max. 0.3% W : Max. 0.6%



## G-Com UV+ EDS Technical Data Sheet (2)

Characteristics	Test Method	Tested Value	Required Value
Resistance to Climatic Shock	EN 438-2 section 19 EDS , EDF		
	Appearance	Level 5	Min. level 4
	Flexural Strength Index Ds	0.98	Min. 0.95
	Flexural Modulus Index Dm	0.97	Min. 0.95
Resistance To Climatic Changes	Gentas Internal Test <sup>(5)</sup>		
	Appearance	Level 5	Min. level 4
Flexural Strength	EN ISO 178 EDS , EDF	110.7 MPa	Min. 80 MPa
Flexural Modulus	EN ISO 178 EDS , EDF	9834 MPa	Min. 9000 MPa
Tensile Strength	EN ISO 527 – 2 EDS , EDF	85 MPa	Min. 60 MPa
Coefficient Of Linear Thermal Expansion (COTE)	ASTM D696-08 <sup>(3)</sup>	$6.0 \times 10^{-6}$ mm / mm °c	---
Thermal Conductivity	ASTM C 518	0.416 W/mK	---
Total Volatile Organic Compound Emission <sup>(6)</sup>	ASTM D5116	< 0.010 mg/m <sup>2</sup> /hr	< 0.5 mg/m <sup>2</sup> /hr

## G-Com UV+ EDS Technical Data Sheet (3)

Characteristics	Test Method	Tested Value	Required Value
Fire Classification <sup>(10)</sup>	<b>EN 13501-1</b>		---
	4.0 ≤ t < 5.9 mm	D S2 d0	---
	6.0 ≤ t < 10.0 mm	C S1 d0	---
Color Difference <sup>(8)</sup>	ISO 7724	Uni Colors : ΔE ≤ 1.0	---
	Gentas Internal Standard <sup>(9)</sup>	Printed Designs : No Visual Difference	---

### Remarks :

(1)Based on test method EN ISO 4892-1 and 4892-2.

(2)Based on test method EN ISO 4892-3.

(3)COTE test is conducted between +30°C To -30°C.

(4)Grey Scale assessment according to EN 20105-A02.

(5)Gentas Internal test procedure for resistance to climatic changes is available upon Request only.

(6)Test report available upon request

(7)Upon Customer request.

(8)The Color Difference refers to the color deviation from the master sample as agreed between Gentas and the customer per batch size ( Refer to project batch size).

(9)Gentas internal test method for evaluation of color difference in printed designs ( Wood Grain / Abstract).

(10)The fire classification might change in different decors .

## Cleaning Instructions :

1) The following cleaning instruction is suitable for periodic cleaning / maintaining and for cleaning after installation ( Adhesive residue ets.) :

2) Use Non abrasive cloth ( Cotton Based / Vileda® Microclean Cloth ) soaked with one of the following cleaners:

- Regular cleaning soap 5% solution ( any household soap is suitable for this purpose )
- Antistatic Cleaning + Care Agent for Plastics ( AKU ) from Burnus®
- Oxivir Plus Spray ( Produced by Diversey – www.diverseysolutions.com )
- Sprint Spitfire Spray ( Produced by Diversey – www.diverseysolutions.com )

All mechanical cleaning system , e.g. rotating brushes / wiper blades etc. , are unsuitable for the surface and may cause a permanent damage to the decorative surface .

3) Wipe the surface with non abrasive cloth from any residue of the cleaner

4) Wipe the surface with Non abrasive clothe soaked with regular water and leave the surface for 5 minutes in order to dry .

5) Clean the surface again with Dry cloth .

6) For cleaners preparation method – follow producer instructions

7) The following chemicals **Should Not Be Used for Cleaning the G-Com UV+ Surface :**

7.1 Hard base solutions : Ammonium Hydroxide, Sodium Hydroxide, Sodium Hypochlorite, Sodium Chloride .

7.2 Hard acidic solutions : Hydrochloric Acid, Sulphuric Acid , Nitric Acid, Phosphoric Acid, Acetic Acid, Hydrofluoric Acid, Chromic Acid, Formaldehyde, Formic Acid, Phenol .

7.3 Reagents : Silver Nitrate , Potassium Permanganate , Ferric ( III ) Chloride , Copper Sulphate , Iodine Tincture .

7.4 Organik çözücüler: Furfural, Acetone, Ethyl alcohol, Methyl Ethyl Ketone, Dichloromethane, Ethylacetate, n – Butyl Acetat, n – Hexane, Methyl Alcohol, Methyl Isobutyl Ketone, TetraHydroFurane ( THF ), Toluene, Tri Chloro Ethylene, Xylene, Methyl Violet 2B.

7.5 Organic compounds : Mono Ethylene Glycol ( MEG ), Di Ethylene Glycol ( DEG )

### Remarks :

@ EGS = Exterior Use Grade Standard Laminate

@ EDS = Exterior Use Heavy Duty Or Severe Use Grade Standard Laminate

@ Required Values Based on 438-6

## G-Com UV+ EDF Technical Data Sheet (1)

Characteristics	Test Method	Tested Value	Required Value
Thickness	EN 438-2 section 5 4 mm 6 mm 8 mm 10 mm 13 mm 18 mm 22 mm	4.1 mm 6.2 mm 8.1 mm 10.2 mm 13.4 mm 18.3 mm 22.3 mm	3.0 ≤ t < 5.0 mm : ± 0.3 mm 5.0 ≤ t < 8.0 mm : ± 0.4 mm 8.0 ≤ t < 12.0 mm : ± 0.5 mm 8.0 ≤ t < 12.0 mm : ± 0.5 mm 12.0 ≤ t < 16.0 mm : ± 0.6 mm 16.0 ≤ t < 20.0 mm : ± 0.7 mm 20.0 ≤ t < 25.0 mm : ± 0.8 mm 25.0 ≤ t : According To Agreement customer / producer
Density	ISO 1183 - 1	1.43	Min. 1.35 gr/cm3
Wear Resistance	EN 438-2 section 10 EDS / EDF	IP = 235 Rev. Wear Value = 400 Rev.	Initial Point ≥ 150 Rev. Wear Value ≥ 350 Rev.
Scratch Resistance	EN 438-2 section 25 EDS / EDF	> 3 N	Textured Surface Min. 3 N
Impact Resistance	EN 438-2 Büyük Bilye section 21 EDS / EDF t ≥ 6.0 mm	No Crack, 3.5 mm	1800 mm height : no crack, 10 mm Max
Surface Crack @ 80°C 20 Hours	EN 438-2 section 24 CGS / CGF	Level 4	Min. level 4
Resistance to Dry Heat at 180°C	EN 438-2 section 16 CGS Textured Surface Finish	Level 5	Min. level 4
Resistance to Water Vapor	EN 438-2 section 14 EDS / EDF Textured Surface Finish	Level 5	Min. level 4

## G-Com UV+ EDF Technical Data Sheet (1)

Characteristics	Test Method	Tested Value	Required Value
Resistance to Boiling Water	EN 438-2 section 12 EDS / EDF  t ≥ 5.0 mm  Textured Surface Finish	$\Delta W = 0.5\%$ $\Delta T = 0.4\%$  Level 5	Max. 2% in weight Max. 2% in thickness  Min. Level 4
Resistance To Wet Condition ( Immersion in water 65°C ; 48 Hours )	EN 438-2 section 15 EDS , EDF  t ≥ 5.0 mm	$\Delta W = 1.0\%$  Level 5	Max. 5% in weight  Color change Min. level 4

## G-Com UV+ EDF Technical Data Sheet (2)

Characteristics	Test method	Tested Value	Required Value
Resistance to Staining	EN 438-2 section 26 EDS , EDF		
	Group 1 + 2	Level 5	Min. level 5
	Group 3	Level 5	Min. level 4
Flatness	EN 438-2 section 9 EDS , EDF  6.0 ≤ t ≤ 10.0 mm	1.87 mm	Max. 3 mm / 1 M length
Light fastness	EN 438-2 section 27 <sup>(1)</sup> EDS , EDF  Grey Scale <sup>(4)</sup>	Level 5	Min. level 4
Resistance To UV Light 3000 Hour	EN 438-2 section 28 <sup>(2)</sup> EDS , EDF Grey Scale <sup>(4)</sup>		
	Contrast Appearance	Level 4 Level 5	Min. level 3 Min. level 4
Resistance To Artificial Weathering 3000 Hour	EN 438-2 section 29 <sup>(1)</sup> EDS , EDF Grey Scale <sup>(4)</sup>		
	Contrast Appearance	Level 4 Level 5	Min. level 3 Min. level 4
Dimensional stability at elevated temperature ( 70°c ; 90% RH )	EN 438-2 section 17 EDS , EDF  t ≥ 5.0 mm	L = 0.18% W = 0.36%	L : Max. 0.3% W : Max. 0.6%

## G-Com UV+ EDF Technical Data Sheet (2)

Characteristics	Test Method	Tested Value	Required Value
Resistance to Climatic Shock	EN 438-2 section 19 EDS , EDF		
	Appearance	Level 5	Min. level 4
	Flexural Strength Index Ds	0.98	Min. 0.95
	Flexural Modulus Index Dm	0.97	Min. 0.95
Resistance To Climatic Changes	Gentas Internal Test <sup>(5)</sup> Appearance	Level 5	Min. Level 4
Flexural Strength	EN ISO 178 EDS , EDF	110.7 MPa	Min. 80 MPa
Flexural Modulus	EN ISO 178 EDS , EDF	9834 MPa	Min. 9000 MPa
Tensile Strength	EN ISO 527 – 2 EDS , EDF	85 MPa	Min. 60 MPa
Coefficient Of Linear Thermal Expansion (COTE)	ASTM D696-08 <sup>(3)</sup>	$6.0 \times 10^{-6}$ mm / mm °c	---
Thermal Conductivity	ASTM C 518	0.416 W/mK	---
Total Volatile Organic Compound Emission <sup>(6)</sup>	ASTM D5116	< 0.010 mg/m <sup>2</sup> /hr	< 0.5 mg/m <sup>2</sup> /hr

## G-Com UV+ EDF Technical Data Sheet (3)

Characteristics	Test Method	Tested Value	Required Value
Fire Classification <sup>(7)</sup>	<b>EN 13501-1</b>	B S2 d0 B S1 d0 ERA – 14 – 095 22/10/2014	
	<b>ASTM E 84 – 10</b>	ClassA	---
	<b>BS 476 Part 7 : 1997</b>	Class 1	---
	<b>DIN 5510-2:2009-05</b>		---
	0.8 mm 1.2 mm	S4 ; SR2 ; ST2 S2 ; SR2 ; ST2	
Color Difference <sup>(6)</sup>	ISO 7724	Uni Colors : $\Delta E \leq 1.0$	---
	Gentas Internal Standard <sup>(9)</sup>	Printed Designs : No Visual Difference	---

### Remarks :

- (1) Based on test method EN ISO 4892-1 and 4892-2 .
- (2) Based on test method EN ISO 4892-3 .
- (3) COTE test is conducted between +30°C To -30°C .
- (4) Grey Scale assessment according to EN 20105-A02 .
- (5) Gentas Internal test procedure for resistance to climatic changes is available upon Request only .
- (6) Test report available upon request
- (7) Upon Customer request .



(8)The Color Difference refers to the color deviation from the master sample as agreed between Gentas and the customer per batch size ( Refer to project batch size ) .

(9)Gentas internal test method for evaluation of color difference in printed designs ( Wood Grain / Abstract).

#### Cleaning Instructions :

1) The following cleaning instruction is suitable for periodic cleaning / maintaining and for cleaning after installation ( Adhesive residue ets. ) :

2)Use Non abrasive cloth ( Cotton Based / Vileda® Microclean Cloth ) soaked with one of the following cleaners :

- Regular cleaning soap 5% solution ( any household soap is suitable for this purpose )
- Antistatic Cleaning + Care Agent for Plastics ( AKU ) from Burnus®
- Oxivir Plus Spray ( Produced by Diversey – www.diverseysolutions.com )
- Sprint Spitfire Spray ( Produced by Diversey – www.diverseysolutions.com )

All mechanical cleaning system , e.g. rotating brushes / wiper blades etc. , are unsuitable for the surface and may cause a permanent damage to the decorative surface .

3)Wipe the surface with non abrasive cloth from any residue of the cleaner

4)Wipe the surface with Non abrasive clothe soaked with regular water and leave the surface for 5 minutes in order to dry .

5)Clean the surface again with Dry cloth .

6)For cleaners preparation method – follow producer instructions

7)The following chemicals **Should Not Be Used for Cleaning the G-Com UV+ Surface :**

7.1 Hard base solutions : Ammonium Hydroxide , Sodium Hydroxide , Sodium Hypochlorite , Sodium Chloride .

7.2 Hard acidic solutions : Hydrochloric Acid , Sulphuric Acid , Nitric Acid , Phosphoric Acid , Acetic Acid , Hydrofluoric Acid , Chromic Acid , Formaldehyde , Formic Acid , Phenol .

7.3 Reagents : Silver Nitrate , Potassium Permanganate , Ferric ( III ) Chloride , Copper Sulphate , Iodine Tincture .

7.4 Organic solvents : Furfural, Acetone , Ethyl alcohol , Methyl Ethyl Ketone , Dichloromethane , Ethylacetate, n – Butyl Acetate, n – Hexane, Methyl Alcohol, Methyl Isobutyl Ketone, TetraHydroFurane ( THF ), Toluene, Tri Chloro Ethylene, Xylene, Methyl Violet 2B.

7.5 Organic compounds : Mono Ethylene Glycol ( MEG ), Di Ethylene Glycol ( DEG )

#### Remarks :

@ EGS = Exterior Use Grade Standard Laminate

@ EDS = Exterior Use Heavy Duty Or Severe Use Grade Standard Laminate

@ Required Values Based on 438-6