

Specification

| Model | DS4A-050 | DS4C-050 | DS4E-050 | DS4A-060 | DS4C-060 | DS4E-060 |
|--------------------|----------|----------|----------|----------|----------|----------|
| Volume | 5ml | | | 6ml | | |
| Length of the tips | 5cm | 10cm | 15cm | 5cm | 10cm | 15cm |

| Model | DS4A-080 | DS4C-080 | DS4E-080 | DS4A-100 | DS4C-100 | DS4E-100 |
|--------------------|----------|----------|----------|----------|----------|----------|
| Volume | 8ml | | | 10ml | | |
| Length of the tips | 5cm | 10cm | 15cm | 5cm | 10cm | 15cm |

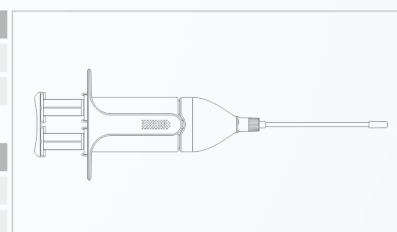
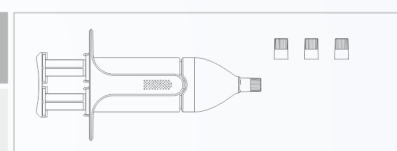
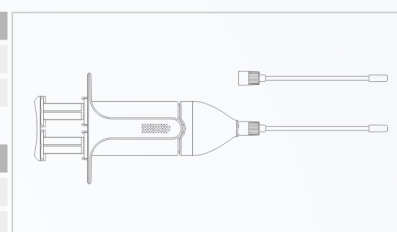
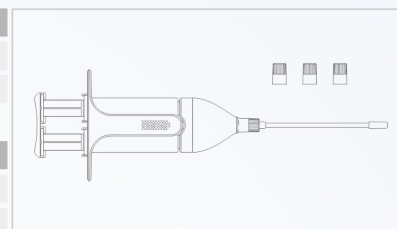
| Model | DS2A-050 | DS2C-050 | DS2E-050 | DS2A-060 | DS2C-060 | DS2E-060 |
|--------------------|----------|----------|----------|----------|----------|----------|
| Volume | 5ml | | | 6ml | | |
| Length of the tips | 5cm | 10cm | 15cm | 5cm | 10cm | 15cm |

| Model | DS2A-080 | DS2C-080 | DS2E-080 | DS2A-100 | DS2C-100 | DS2E-100 |
|--------------------|----------|----------|----------|----------|----------|----------|
| Volume | 8ml | | | 10ml | | |
| Length of the tips | 5cm | 10cm | 15cm | 5cm | 10cm | 15cm |

| Model | DS-050 | DS-060 | DS-080 | DS-100 |
|--------|--------|--------|--------|--------|
| Volume | 5ml | 6ml | 8ml | 10ml |

| Model | DSA-050 | DSC-050 | DSE-050 | DSA-060 | DSC-060 | DSE-060 |
|--------------------|---------|---------|---------|---------|---------|---------|
| Volume | 5ml | | | 6ml | | |
| Length of the tips | 5cm | 10cm | 15cm | 5cm | 10cm | 15cm |

| Model | DSA-080 | DSC-080 | DSE-080 | DSA-100 | DSC-100 | DSE-100 |
|--------------------|---------|---------|---------|---------|---------|---------|
| Volume | 8ml | | | 10ml | | |
| Length of the tips | 5cm | 10cm | 15cm | 5cm | 10cm | 15cm |



ImmisealTM

Dural Sealant System

- Quick gel-forming
- Absorbable
- Low swelling ratio
- Easy application
- Water-tight seal
- Shorter surgery time





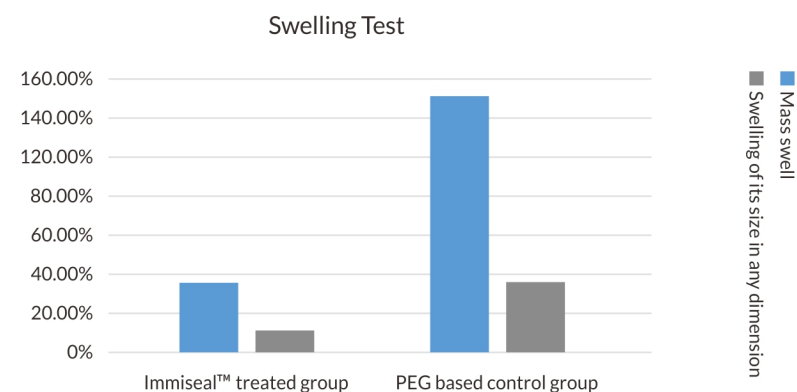
Immiseal™ dural sealant system is an absorbable synthetic sealant, applied as an adjunct to duraplasty repair such as suturing or onlay of autologous dura or non-autologous dural substitute. The application of the Immiseal™ could prevent CSF leakage from incisions and provides a barrier to minimize dural adhesion with minimum swelling.

Immiseal™ is composed of synthetic materials. Upon mixing these materials with water, electrophilic and nucleophilic reactions would occur, leading to the formation of a hydrogel.

Lower swelling ratio

Reduces mass effects thus compression of brain tissue.

Raw material - lower molecular weight which presents lower swelling ratio than the other PEG based product.



Degradation within 21 days

Pre-clinical study shows Immiseal™ degrades approximately within 21 days, which meets the clinical need of cranial closure and prevents long-term mass effect to promote tissue regeneration.

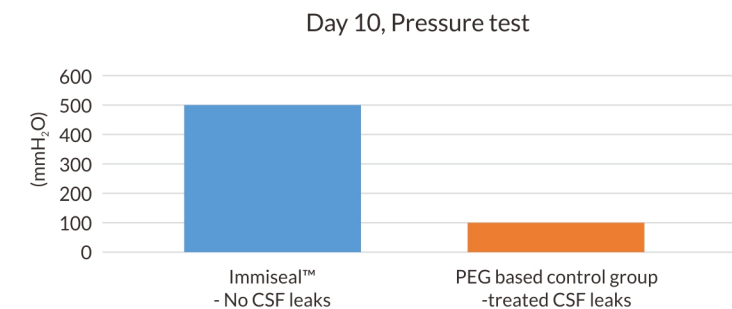
Quick gelation



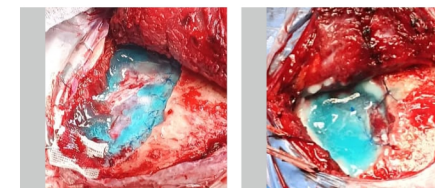
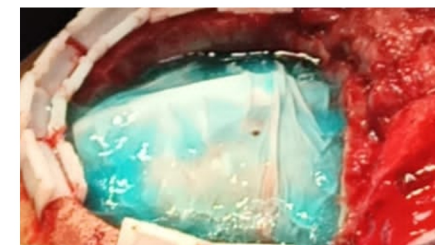
Quick gel-forming within
SECONDS

CSF leakage prevention

Pressure tests were performed in pre-clinical canine model of cranial surgery. Immiseal™ exhibited strong tissue sealing to provide a mechanical CSF barrier.



At 10 days post-surgery, Immiseal - treated group provided a 100% water-tight closure when the intracranial pressure(ICP) was increased to 500 mmH₂O by injecting normal saline, while CSF leakage occurred in alternative-treated group when ICP increased to 102 mmH₂O.



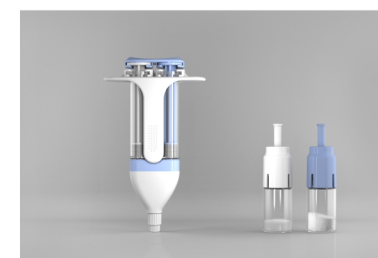
Applied in tumor resection surgeries

Clinical trial - CSF leakage prevention rate at post-operation 7±3 days

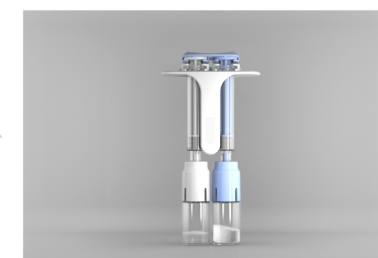
| PPS | |
|---------------------------------------|------------------|
| Parameter | Test group |
| Fail number (%) | 0(0.00%) |
| Successful number (%) | 65(100.00%) |
| Total (Missing) | 65(0) |
| 95% CI for the rate in a single group | (94.42%,100.00%) |

Note: 95% CI for the rate was calculated based on Wilson score.

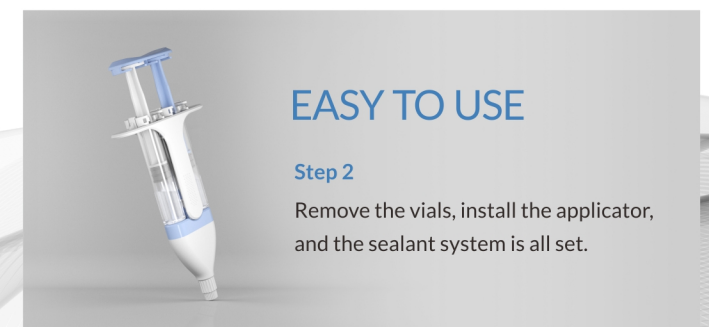
Easy surgical handling



The injection syringe is assembled before use, which greatly simplifies the procedures.



Step 1
Connect two vials to the syringes, and shake several times to mix the materials.



EASY TO USE

Step 2
Remove the vials, install the applicator, and the sealant system is all set.



Skip the thawing process

Immiseal™ stored below 30°C/86°F, ready for any urgent situation