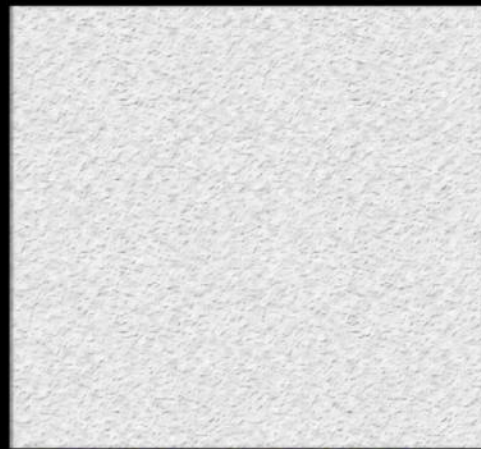
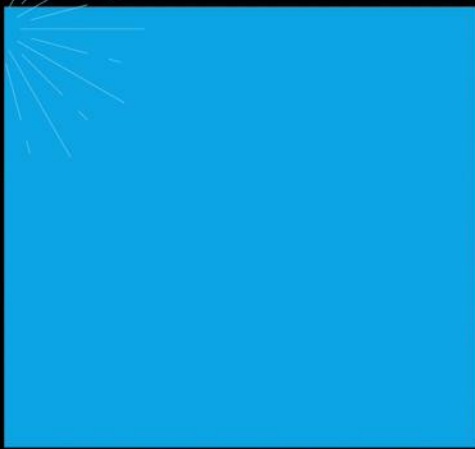
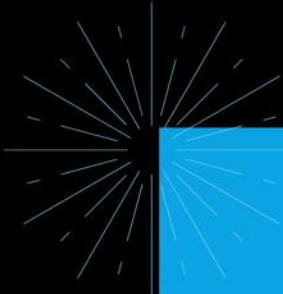
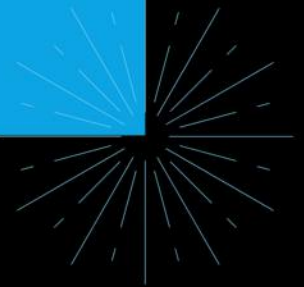
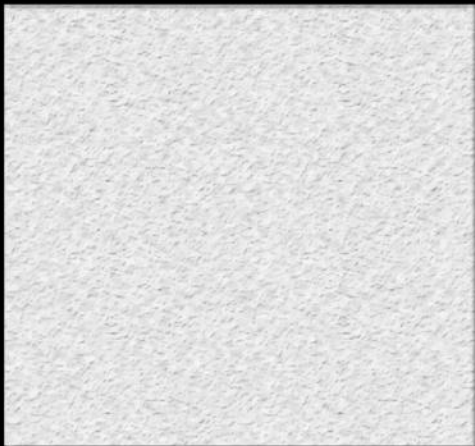




# CATALOG



**BONE EASY<sup>®</sup>**



A Personal Touch

[www.boneeasy.com](http://www.boneeasy.com)



# About us

Founded in 2012, BoneEasy is dedicated to the manufacture of bespoke Medical Devices for the rehabilitation of maxillofacial cranial defects.

We are convinced that medical devices must be individualized according to the needs of each patient, in order to achieve better results and to provide the best possible treatment for each one.

BoneEasy creates and provides clinicians with solutions that allow them to perform better and less invasive treatments for their patients. By using advanced technologies and software, BoneEasy is able to manufacture medical devices that meet the specific needs of each patient.



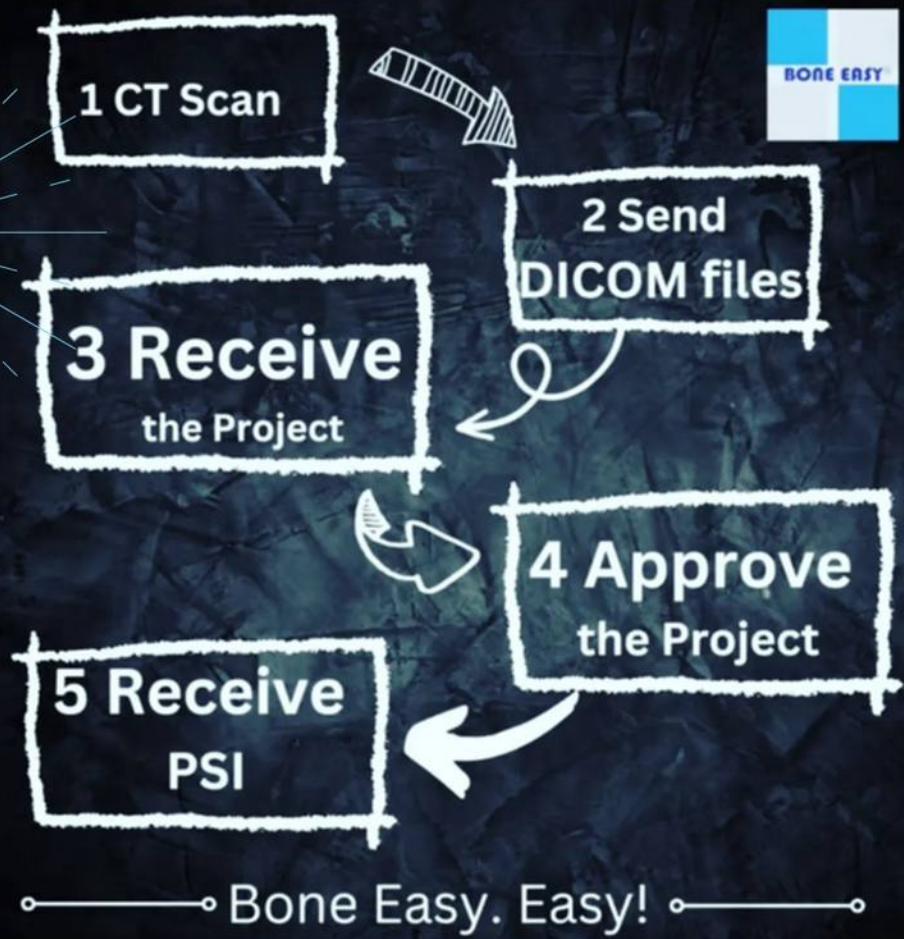
Since 2012

Mic:

Concept that assumes the lack of keratinized tissue around the emergence of the implants, and the fixations are done by screws that are protected by muscle attachment that determine the fund of vestibule.

\*MIC - Muscularskeletal integration concept

# How do we do it?



## technology 3D

The face is an extremely complex structure, with a large amount of specifically organized bones responsible for the appearance of each individual. This bone and muscle organization is responsible not only for the appearance, but also for allowing the patient to see, taste, smell, breathe and facial expressions.

With the technologies provided by BoneEasy, essentially 3D printing, doctors are able to test, plan the surgery and the final outcome of each reconstruction. This way it is possible reduce surgery time, making it less invasive, and get better results and more secure what, consequently, you will have less risk of complications. These solutions give patients back the desired quality of life and self-esteem.

# Our Products



Severe maxillary atrophy is characterized by the resorption of the alveolar bone, by this moment all the concepts related to dental implants fail to the concepts on basal implants.

Implantize Compact is a device that matches this concept, based on the mix of two concepts which are midface plating and tissue level dental implants. The system have bone preparations of the remaining alveolar bone to place the connection near basal bone and it is fixed on the maxilla with Lefort I individualised plates, and on the mandible with Champy plates concept.



Implantize Compact

# Mesh4U

## Guided Bone Regenerative



MESH4U is a reliable bone growth solution, due to its stability and containment of bone substitute granules at the site of bone atrophy, crucial for the bone regeneration process to take place.

**60%**



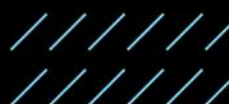
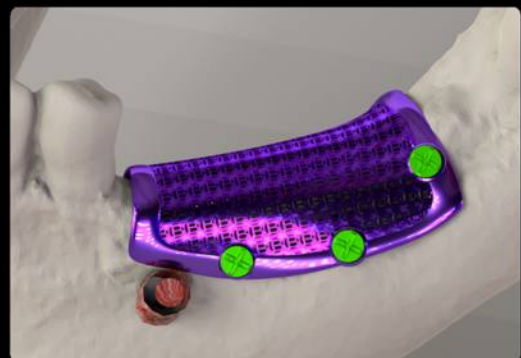
We recommend filling the interior of the mesh with a mixture of 50% autologous bone and 50% of a bone substitute preferred by the clinician. The autologous bone present contains the bone cells necessary for the regenerative process, which is thus accelerated and facilitated.

**80%**

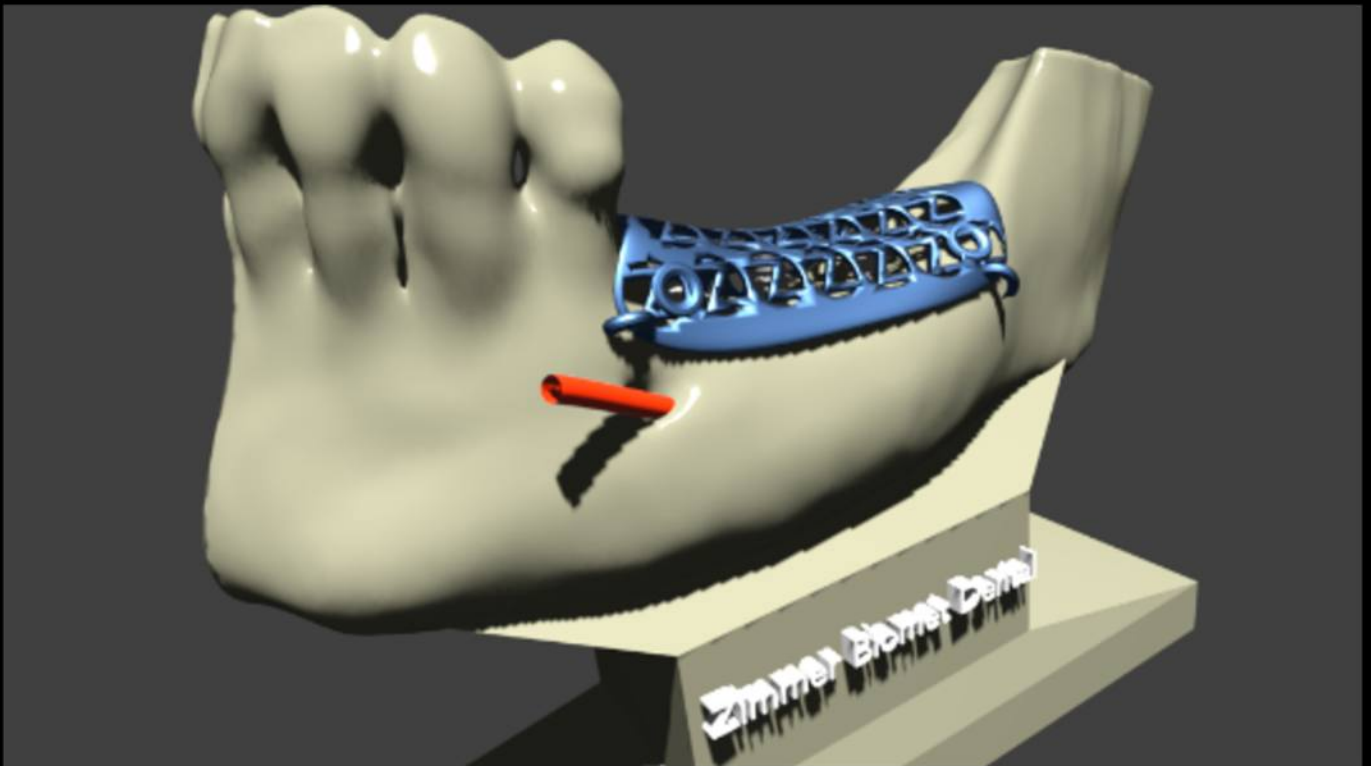
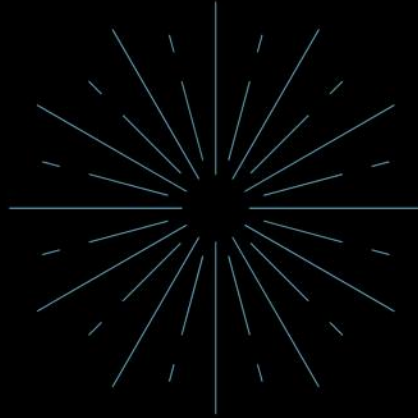


We produce a mesh design with different porosity levels - 40%, 60% and 80% - following the principle of the least amount of metal possible interacting with bone and soft tissue.

**40%**



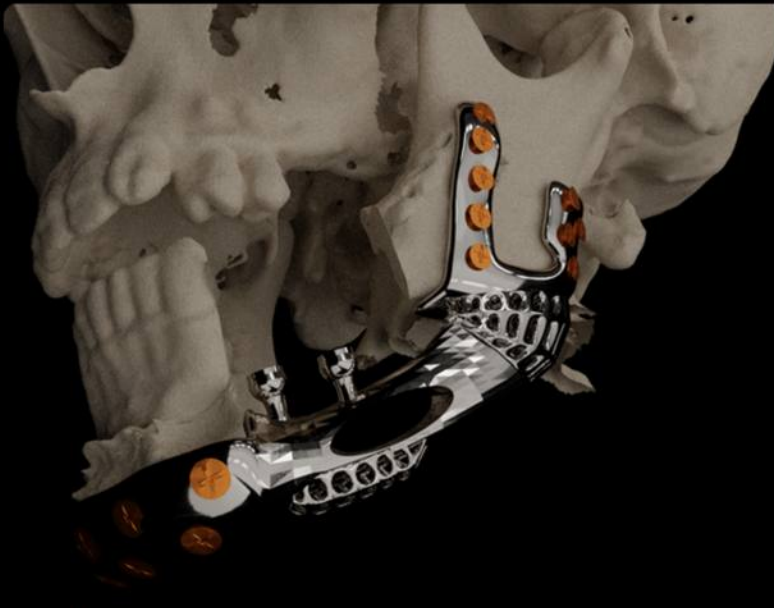
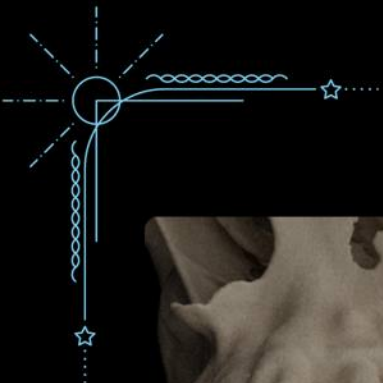
# Zimmer Mesh



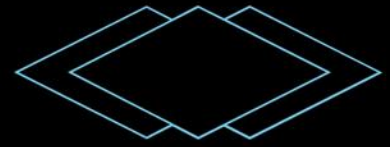


# Element 5



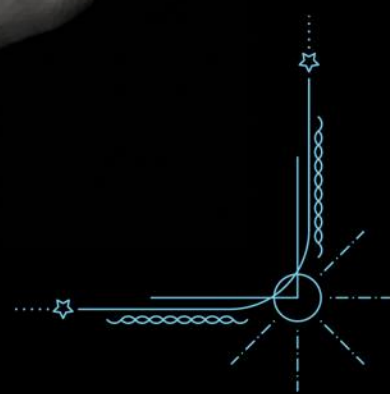
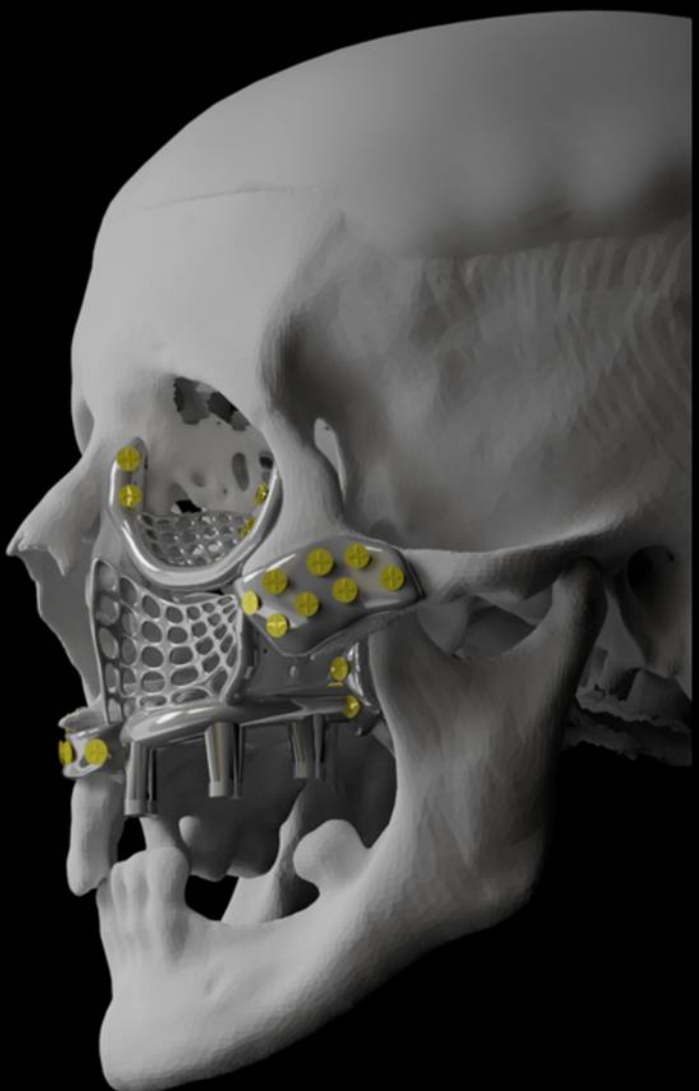


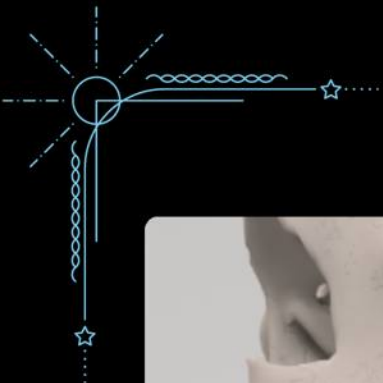
# ICMF TITANIUM



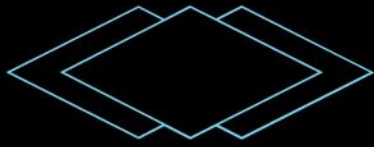
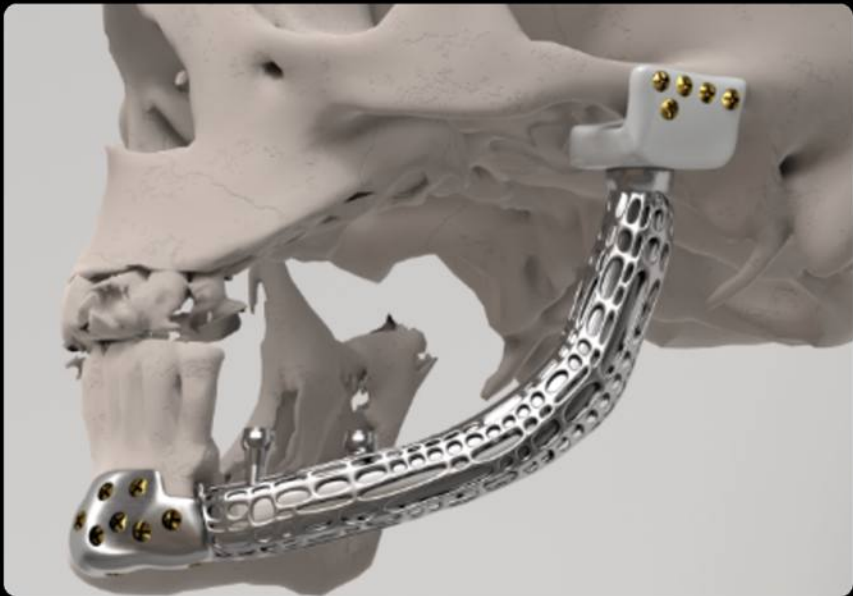
iCMF was the name given to the range of medical devices, with the purpose of replacing and/or reconstructing maxillofacial cranial defects, caused by trauma, tumor or any other cause that has led to the loss of function in maxillofacial cranial areas.

They are structures designed to the measure of a specific clinical case, using, for this, the computerized tomography of the patient for whom it is intended.

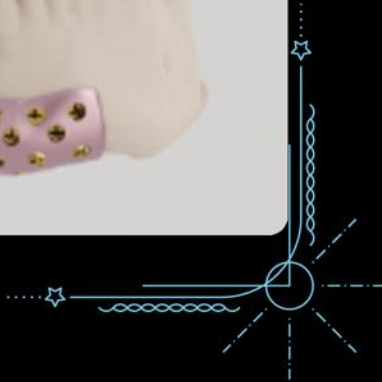


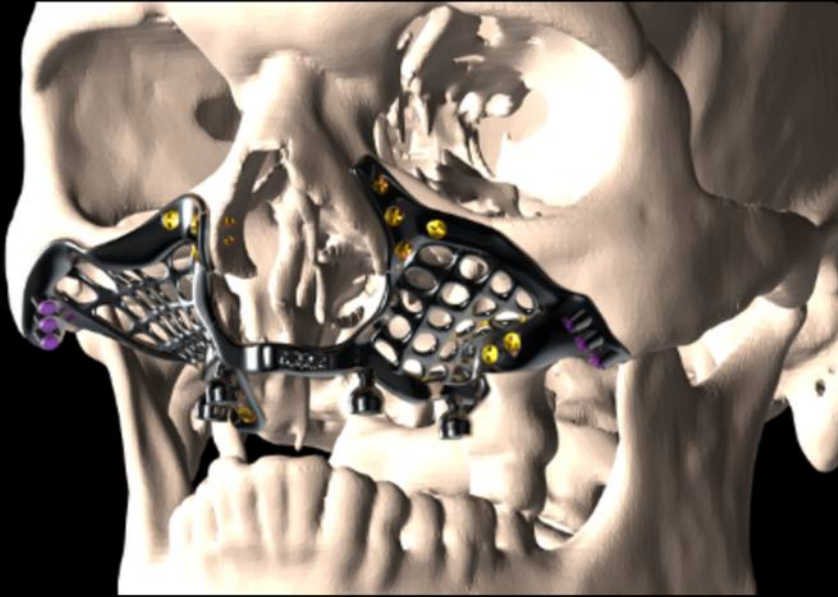
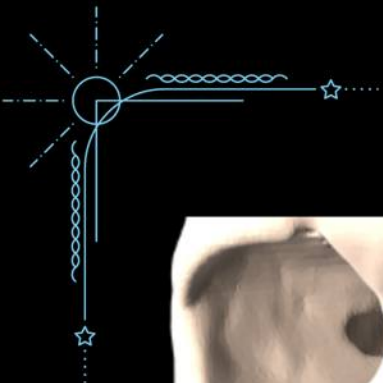


# DynaJoint

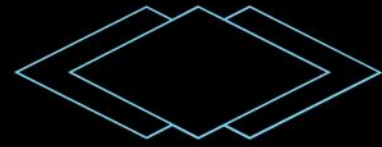


We understand that biology and physiology are paramount and that each design must take into account the behavior of muscles, bones, nerves and other structures adjacent to the device it is intended for, as we believe it is the only way for the structure to succeed.

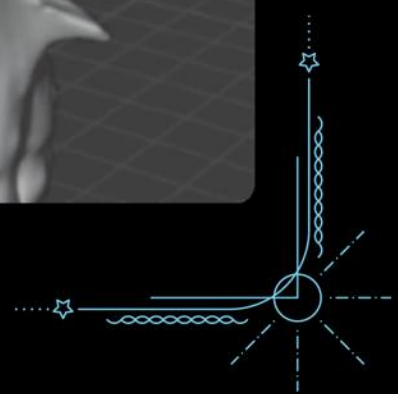
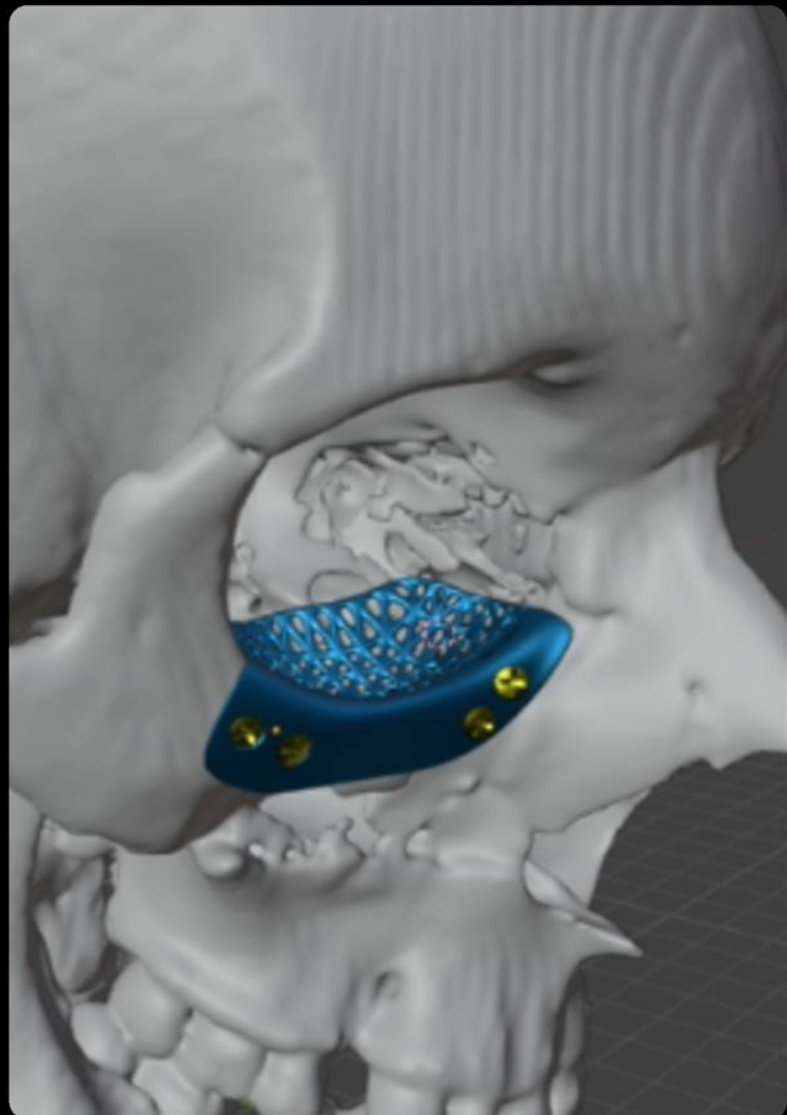


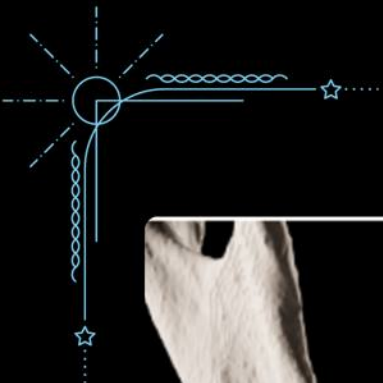


# ICMF TITANIUM

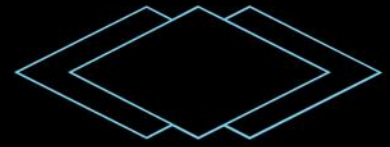


In addition to the design, the material from which the device is made is also important, and must be chosen according to the purpose and function for which it is intended.

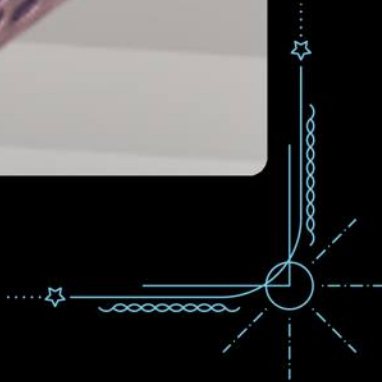
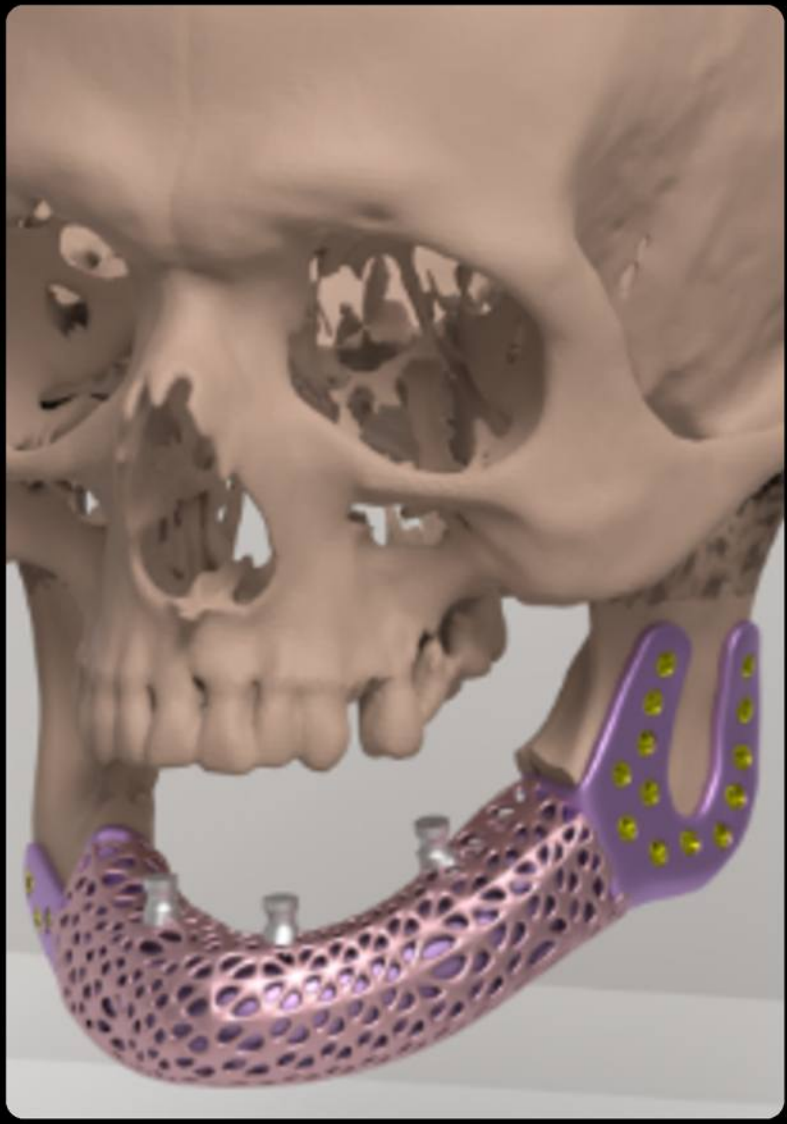
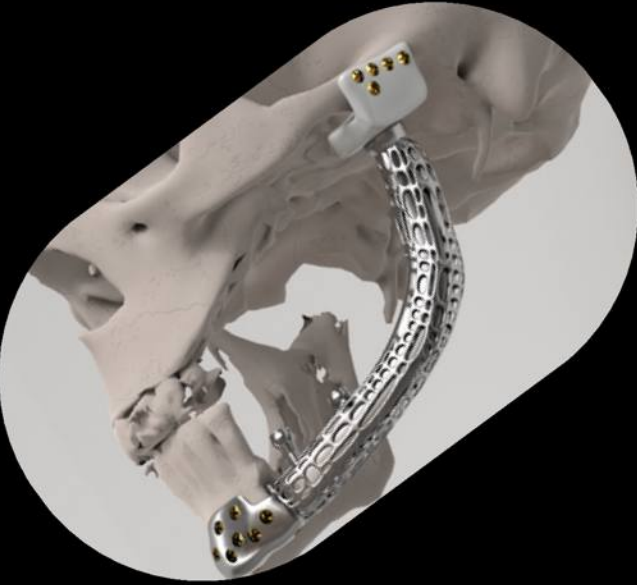


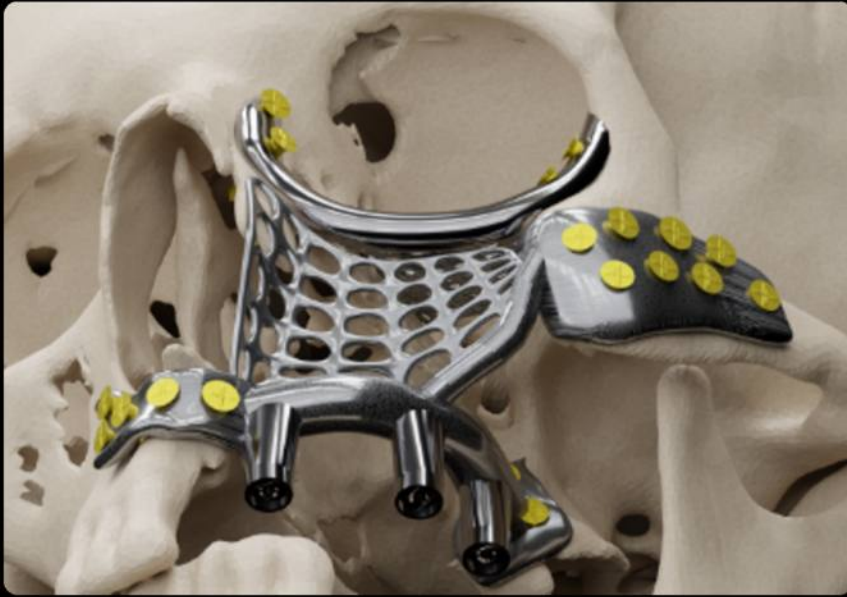
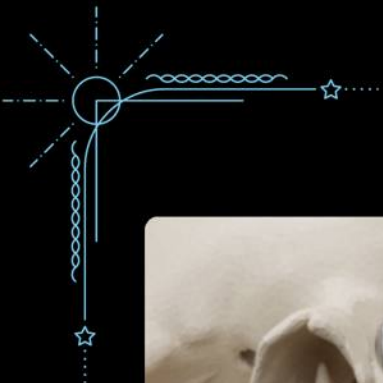


# ICMF TITANIUM

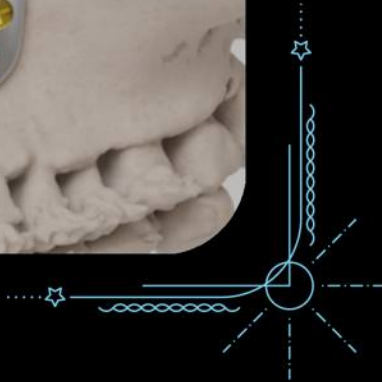
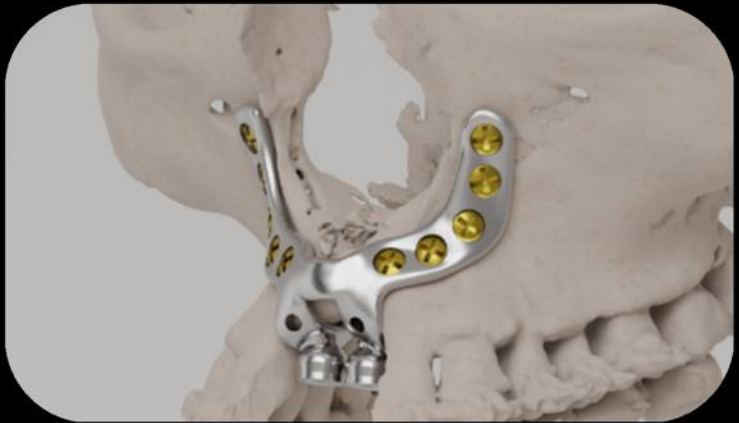
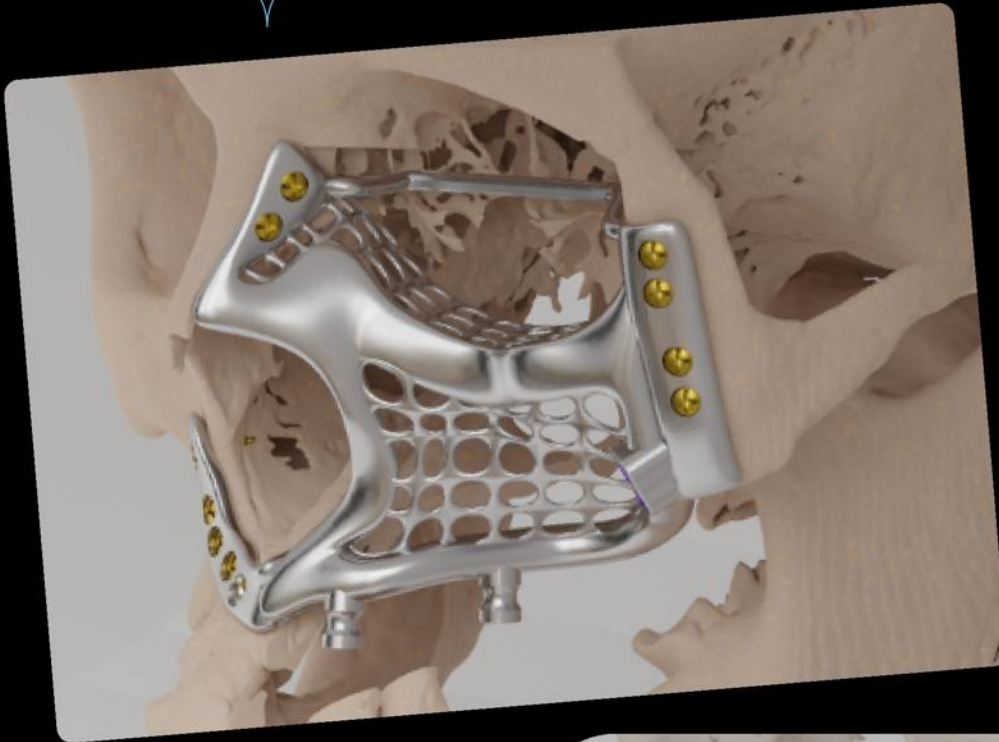
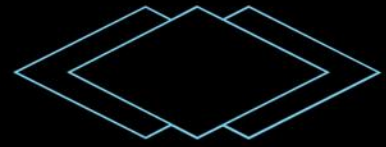


In addition to the design, the material from which the device is made is also important, and must be chosen according to the purpose and function for which it is intended.



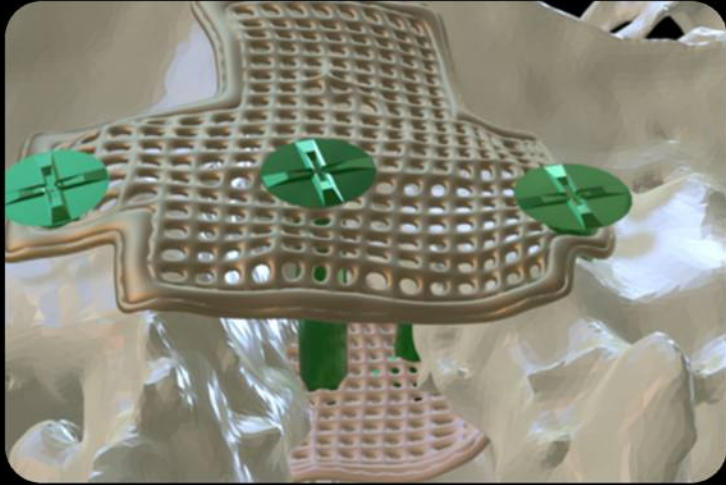


# ICMF TITANIUM





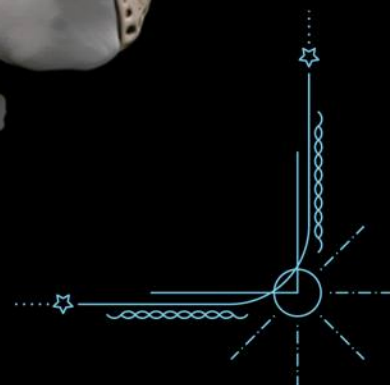
# ICMF Peek



Peek is a hydrophobic polymer. It inhibits the colonization of bacteria in case of soft tissue exposure. The Pre-designed Mesh Plate reduces preparation time during surgery and increases adaptability to the bone defect.

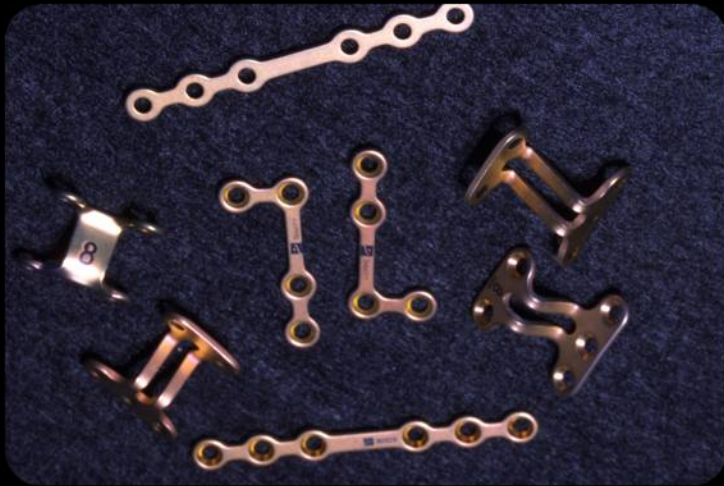
A variety of plate shapes can be created without the need for time-consuming autogenous block remodeling. Alternative to Khoury Plates.

It is not necessary to harvest a bone block. Each case is planned in reverse to achieve a predictable end result.



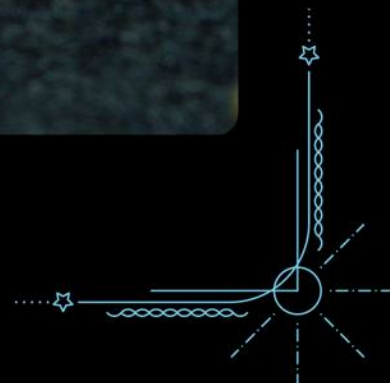
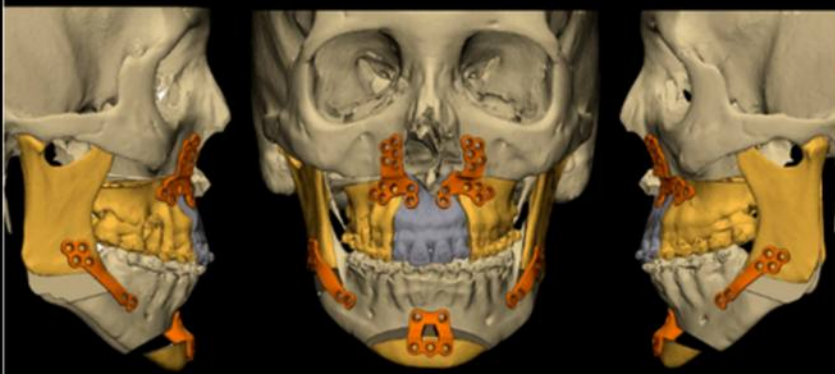


# Mid Face micro fixation plates



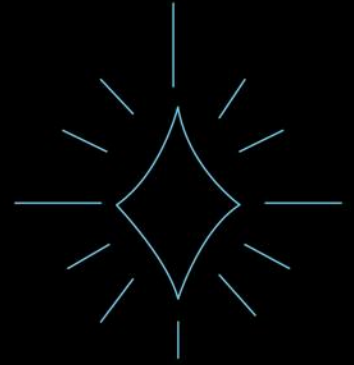
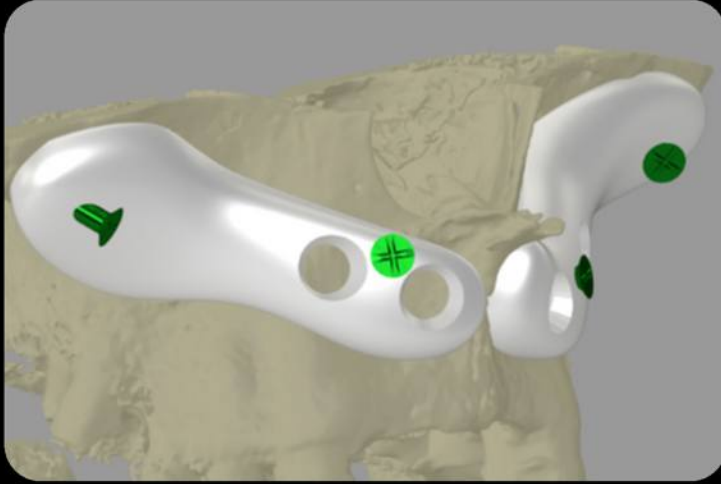
2.0 system with 1.2 mm thickness plate

2.4 screw lock system 2 mm thickness plate

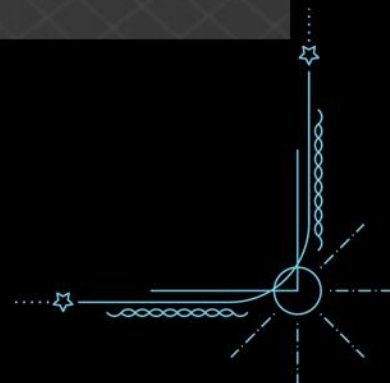
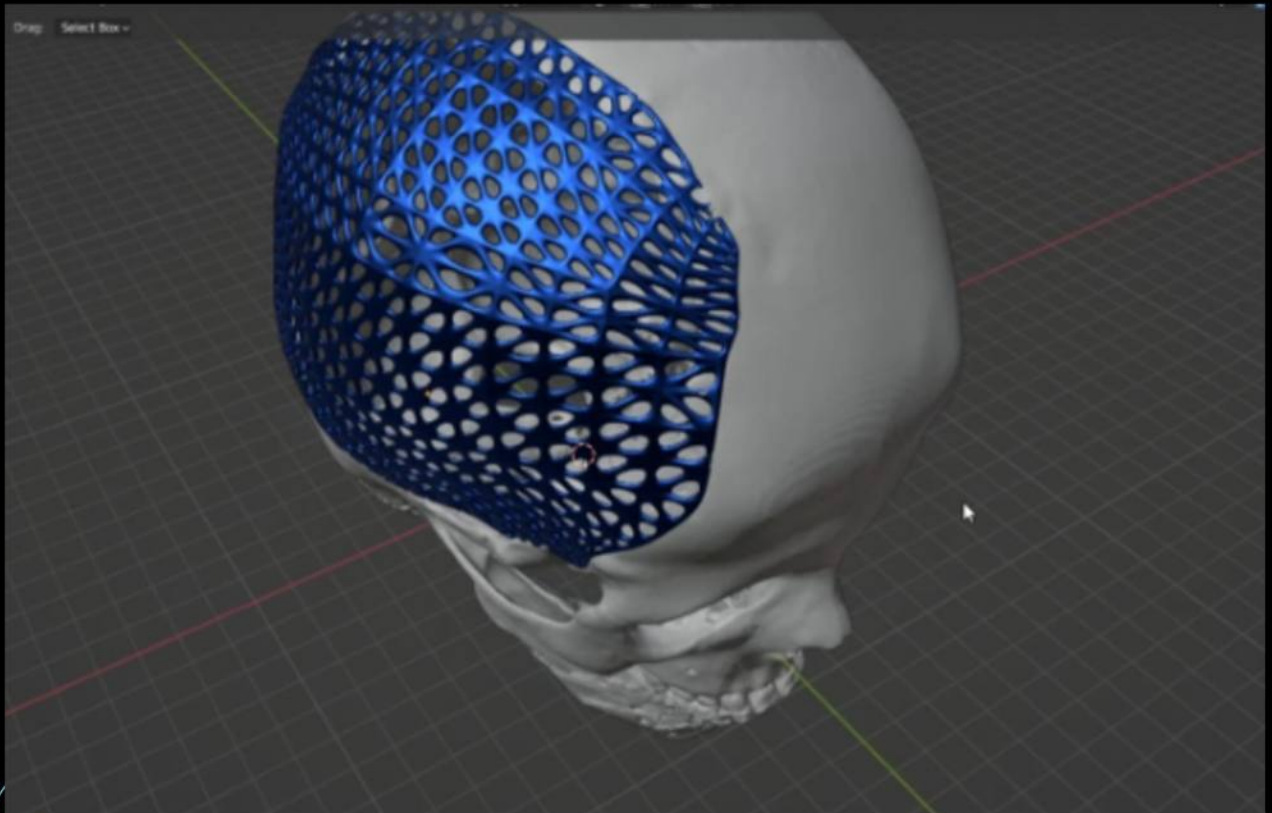




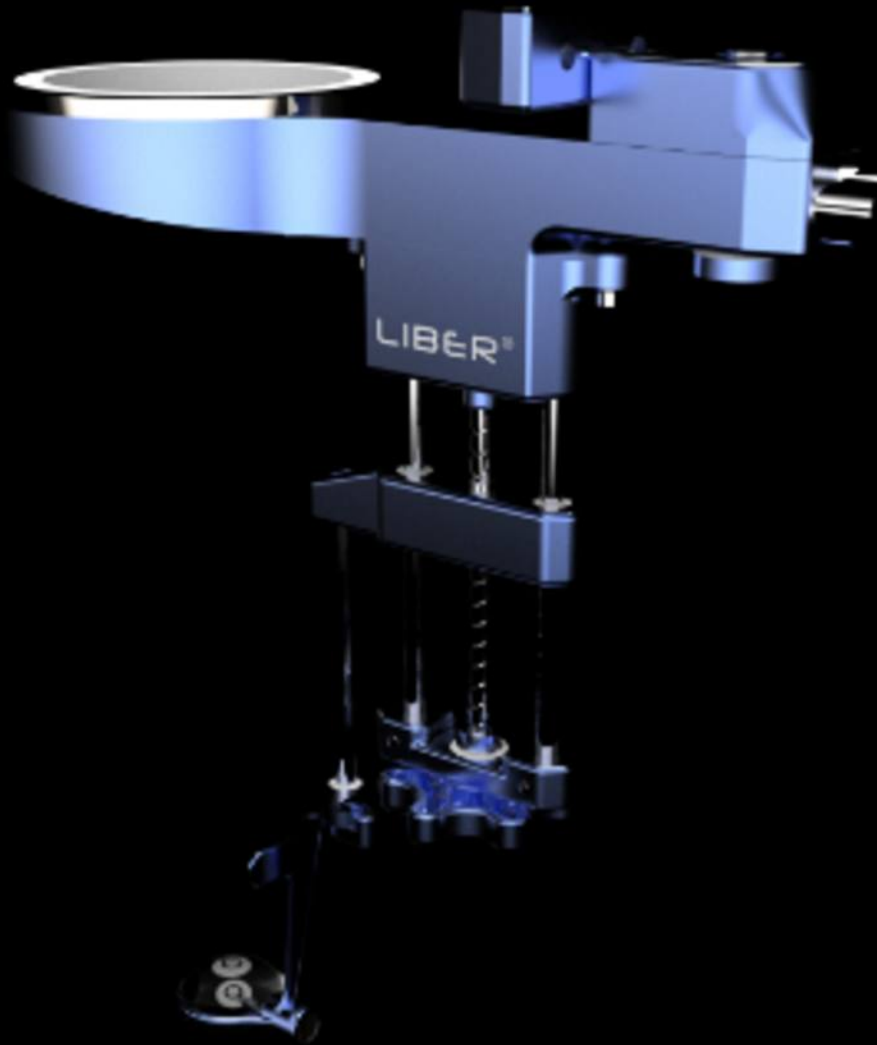
# Aesthetical Implants



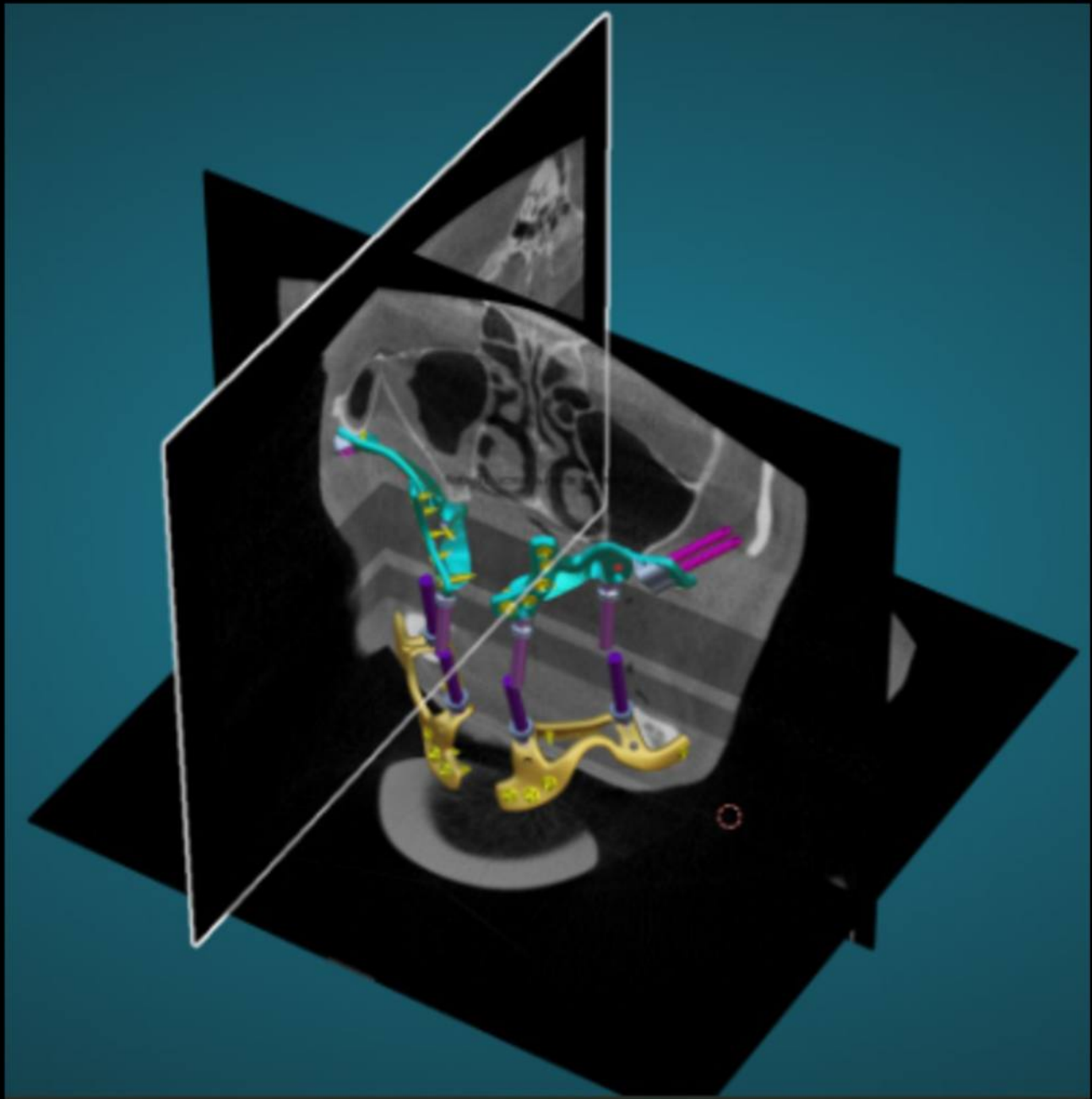
# Cranial Plates



# Liber Microscope

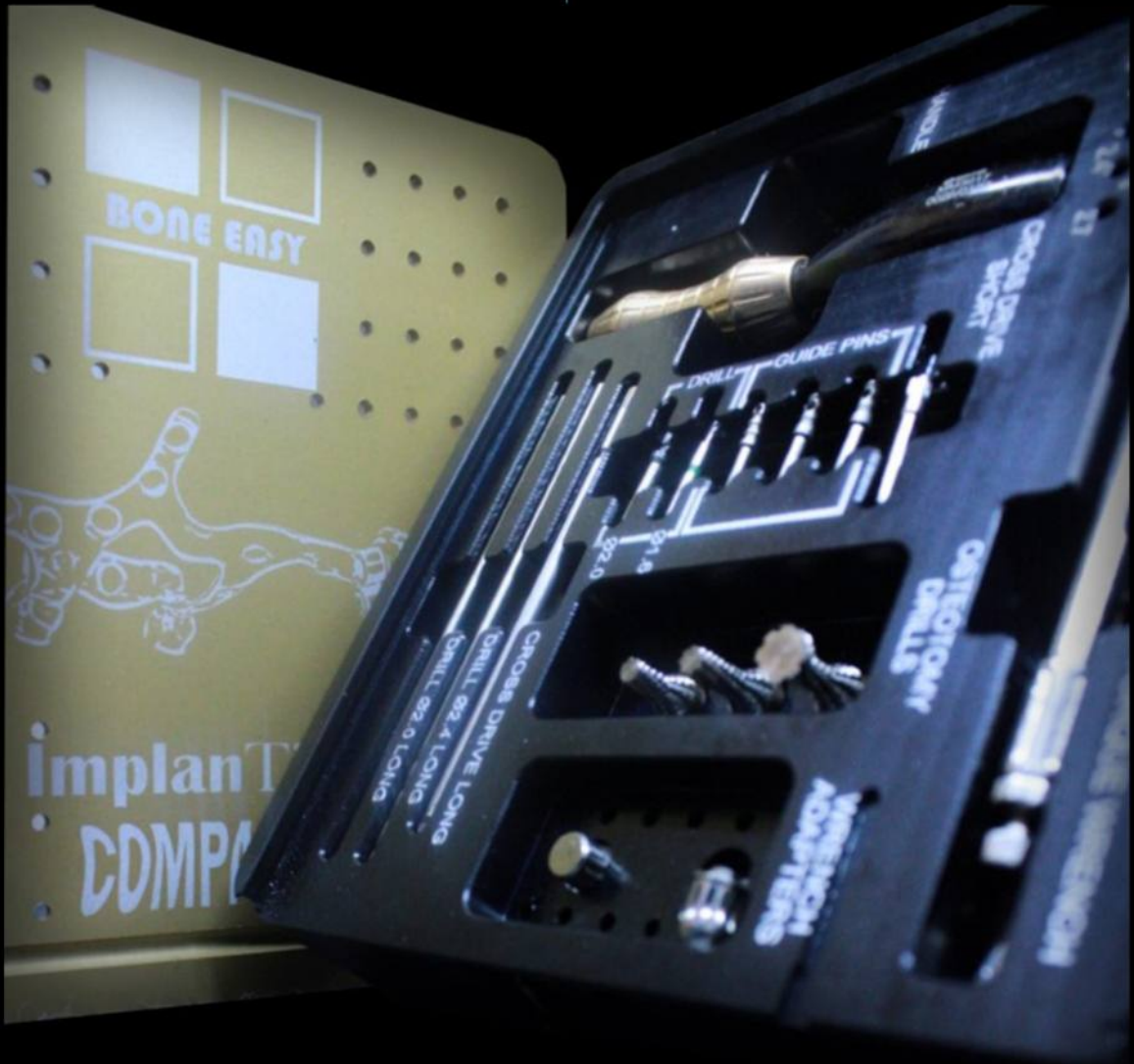


# Tailored Implant



# Surgical Kit

## Instruments



# Screws



Variety of Screws

Types of screws:

- |            |            |
|------------|------------|
| 2.0 x 5mm  | 2.0 x 10mm |
| 2.0 x 8mm  | 2.0 x 12mm |
| 2.4 x 5mm  | 2.4 x 10mm |
| 2.4 x 8mm  | 2.4 x 12mm |
| 2.7 x 22mm |            |



# CONTACT US

You can keep in touch with us by following our social media and browsing our official website below.

## **Website:**

[www.boneeasy.com](http://www.boneeasy.com)

## **Email:**

[info@boneeasy.com](mailto:info@boneeasy.com)

## **Social Media:**

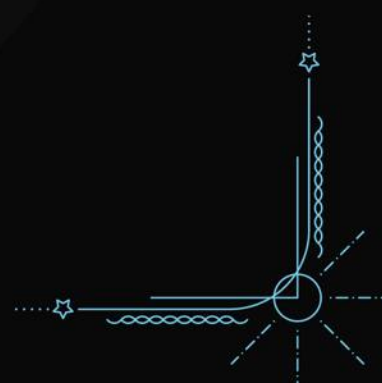
Facebook: BoneEasyUnipessoal

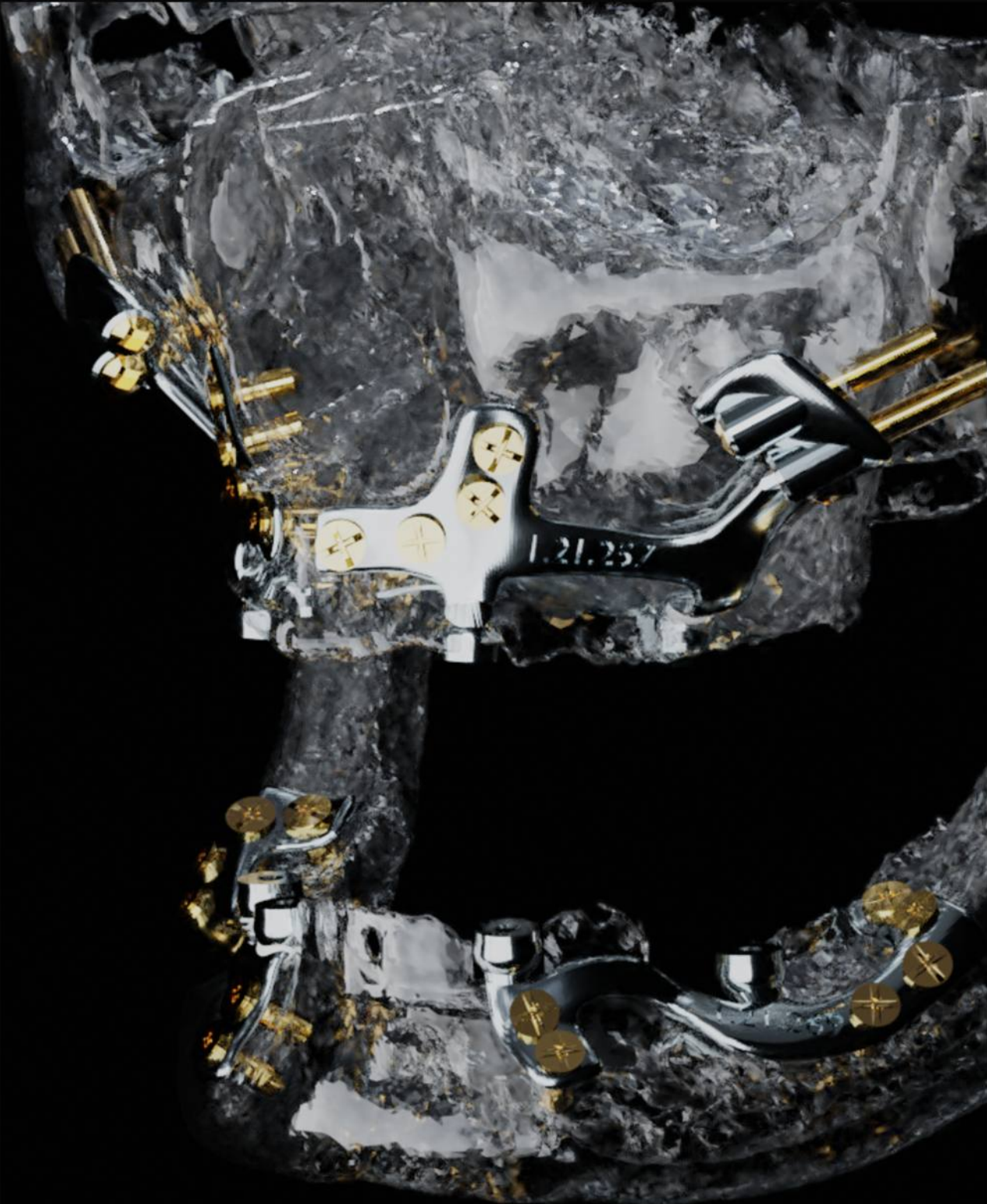
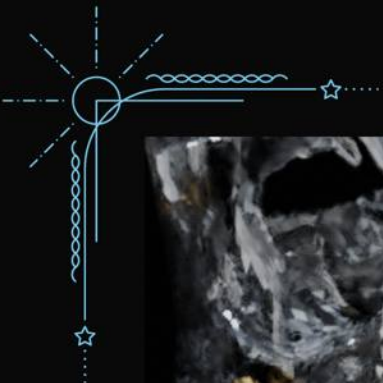
Instagram: BoneEasy\_

RESDEVMED - BONEEASY Travessa do Navega  
436C

3885-183 Arada Portugal

+351 929 013 061





Thank You

