

Manual utilizare

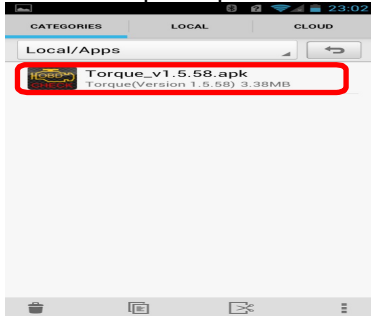
c) Conectare cu succes

1. Instalati OBDII

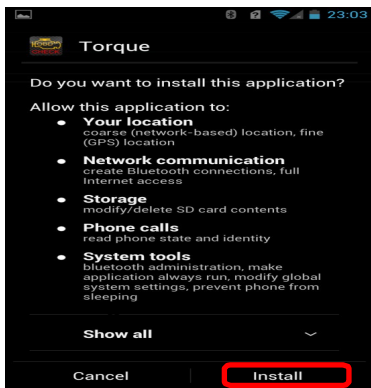


2. Instalati programul Torque

a) Copiati programul de pe cd pe telefon

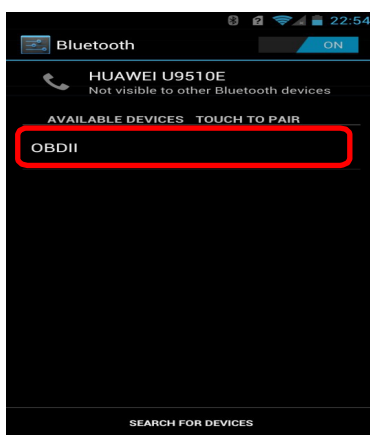


b) Instalati Programul

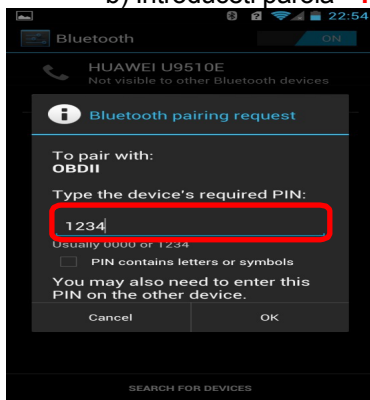


3 Conectare OBDII

a) Cautati OBDII Bluetooth

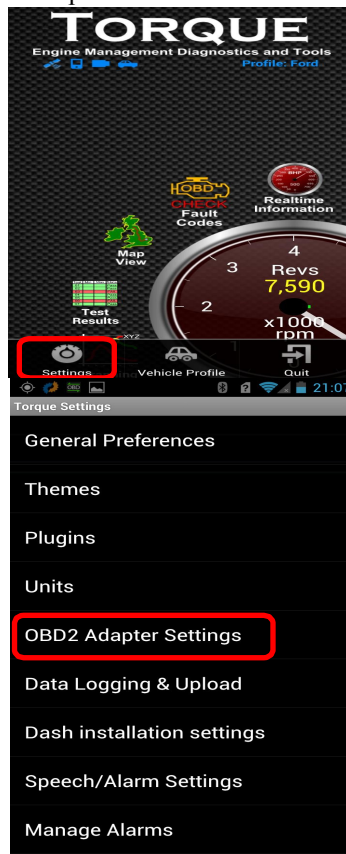


b) Introduceti parola "123"

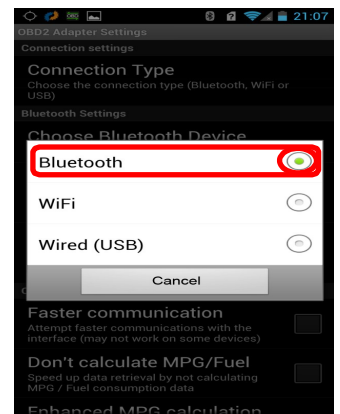


4. Rulati Programul

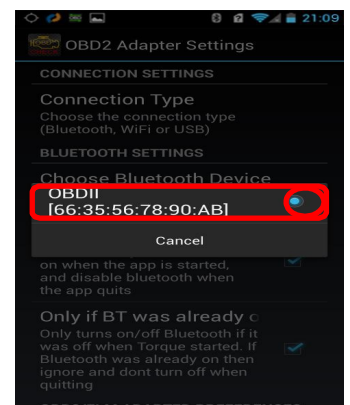
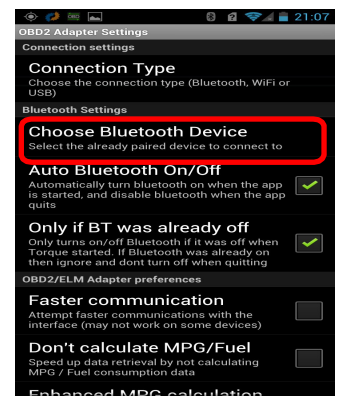
Apasati pe butonul meniu apoi setari si conectare Bluetooth



a) Alegeti conectarea bluetooth



b) Alegeti "Bluetooth Device" care este OBDII



Iesiti din Torque si Porniti din nou programul

