

AUTOMATIC BARRIERS

FA00132-EN



INSTALLATION AND OPERATION

G4040E - G4040IE

EN English



WARNING! **important safety instructions for people:** **READ CAREFULLY!**



PREMISE

• EMPLOY THIS PRODUCT ONLY FOR THE USE FOR WHICH IT WAS EXPRESSLY MADE. ANY OTHER USE IS DANGEROUS. CAME CANCELLI AUTOMATICI S.p.A IS NOT LIABLE FOR ANY DAMAGE CAUSED BY IMPROPER, WRONGFUL AND UNREASONABLE USE • THE SAFETY OF THIS PRODUCT AND ITS PROPER FITTING DEPENDS, THEREFORE, ON RESPECTING ITS TECHNICAL CHARACTERISTICS AND PROPER FITTING, TO BE DONE IN STATE-OF-THE-ART FASHION, AND UNDER SAFE CONDITIONS AS EXPRESSLY EXPLAINED IN THE LITERATURE THAT COMES WITH THE PRODUCT. • KEEP THESE WARNINGS TOGETHER WITH THE INSTALLATION AND OPERATION MANUALS THAT COME WITH THE OPERATOR.

BEFORE INSTALLING

(CHECKING WHAT'S THERE: IF SOMETHING IS MISSING, DO NOT CONTINUE UNTIL YOU HAVE COMPLIED WITH ALL SAFETY PROVISIONS)

• FITTING AND TESTING MUST BE ONLY PERFORMED BY QUALIFIED TECHNICIANS • LAYING THE CABLES, INSTALLATION AND TESTING MUST FOLLOW STATE-OF-THE-ART PROCEDURES AS DICTATED BY REGULATIONS • BEFORE BEGINNING ANY OPERATION IT IS MANDATORY TO CAREFULLY READ ALL INSTRUCTIONS; IMPROPER INSTALLATION MAY RESULT IN SERIOUS HARM TO PEOPLE AND THINGS • MAKE SURE THE BOOM IS IN GOOD MECHANICAL STATE, BALANCED AND ALIGNED, AND THAT IT OPENS AND CLOSSES PROPERLY. ALSO, IF NEEDED, FIT SUITABLE PROTECTIONS OR USE PROPER SAFETY SENSORS • IF THE OPERATOR IS TO BE INSTALLED AT A HEIGHT OF OVER 2.5 M FROM THE GROUND OR OTHER ACCESS LEVEL, MAKE SURE YOU HAVE ANY NECESSARY PROTECTIONS AND/OR WARNINGS IN PLACE • IF ANY PEDESTRIAN OPENINGS ARE FITTED INTO THE OPERATOR, THERE MUST ALSO BE A SYSTEM TO BLOCK THEIR OPENING WHILE THEY ARE MOVING • MAKE SURE THAT THE OPENING AUTOMATIC BARRIER CANNOT ENTRAP PEOPLE AGAINST THE FIXED PARTS OF THE OPERATOR • DO NOT INSTALL THE OPERATOR UPSIDE DOWN OR ONTO ELEMENTS THAT COULD YIELD AND BEND. IF NECESSARY, ADD SUITABLE REINFORCEMENTS TO THE ANCHORING POINTS • DO NOT INSTALL ON TILTED SURFACES • MAKE SURE THE TEMPERATURE RANGE SHOWN ON THE PRODUCT LITERATURE IS SUITABLE TO THE CLIMATE WHERE IT WILL BE INSTALLED AS EXPLAINED IN THE MANUAL.

INSTALLING

• SUITABLY SECTION OFF AND DEMARCATÉ THE ENTIRE INSTALLATION SITE TO PREVENT UNAUTHORIZED PERSONS FROM ENTERING THE AREA, ESPECIALLY MINORS AND CHILDREN • BE CAREFUL WHEN HANDLING OPERATORS THAT WEIGH OVER 20 KG. IF NEED BE, USE PROPER SAFETY HOISTING EQUIPMENT • THE CE-MARKED SAFETY DEVICES (PHOTOCELLS, STEPPING PLATES, SENSITIVE SAFETY-EDGES, EMERGENCY BUTTONS, AND SO ON), MUST BE FITTED IN COMPLIANCE WITH THE REGULATIONS IN EFFECT AND ACCORDING TO STATE-OF-THE-ART CRITERIA, TAKING INTO ACCOUNT THE ENVIRONMENT, THE TYPE OF REQUIRED SERVICE AND OF THE WORKING FORCES APPLIED TO MOVING LEAVES. ANY SHEARING OR CONVEYING POINTS MUST BE SENSOR-PROTECTED • ANY RESIDUAL RISKS MUST BE POINTED OUT TO END USERS AND HIGHLIGHTED WITH PICTOGRAMS AS PROVIDED BY THE LAW. • ALL OPENING COMMANDS (THAT IS, BUTTONS, KEY SWITCHES, MAGNETIC READERS, AND SO ON) MUST BE INSTALLED AT LEAST 1.85 M FROM THE PERIMETER OF THE BARRIER'S WORKING AREA, OR WHERE THEY CANNOT BE REACHED FROM OUTSIDE THE BARRIER. ALSO, ANY DIRECT COMMANDS (BUTTONS, TOUCH PANELS, AND SO ON) MUST BE INSTALLED AT LEAST 1.5 M FROM THE GROUND AND MUST NOT BE REACHABLE BY UNAUTHORIZED PERSONS • THE AUTOMATIC BARRIER MUST VISIBLY SHOW ITS IDENTIFICATION DATA. • BEFORE CONNECTING THE MAIN POWER SUPPLY MAKE SURE THAT THE IDENTIFICATION DATA CORRESPOND TO THE THOSE OF THE NETWORK • THE AUTOMATIC BARRIER MUST BE CONNECTED TO AN EFFECTIVE REGULATION GROUNDING SYSTEM. • THE MANUFACTURER DECLINES ANY LIABILITY FOR USING NON-ORIGINAL PRODUCTS; WHICH WOULD RESULT IN WARRANTY LOSS • ALL MAINTAINED ACTION COMMANDS, MUST BE FITTED IN PLACES FROM WHICH THE MOVING BARRIER AND TRANSIT AND DRIVING AREAS ARE VISIBLE • APPLY, IF MISSING, A PERMANENT SIGN SHOWING THE POSITION OF THE RELEASE DEVICE • BEFORE DELIVERING TO THE USERS, MAKE SURE THE SYSTEM IS EN 12453 AND EN 12445 STANDARD COMPLIANT (REGARDING IMPACT FORCES), AND ALSO MAKE SURE THE SYSTEM HAS BEEN PROPERLY ADJUSTED AND THAT ANY SAFETY, PROTECTION AND MANUAL RELEASE DEVICES ARE WORKING PROPERLY • APPLY WARNING SIGNS WHERE NECESSARY AND IN A VISIBLE PLACE (SUCH AS THE GATE'S LICENSE PLATE)

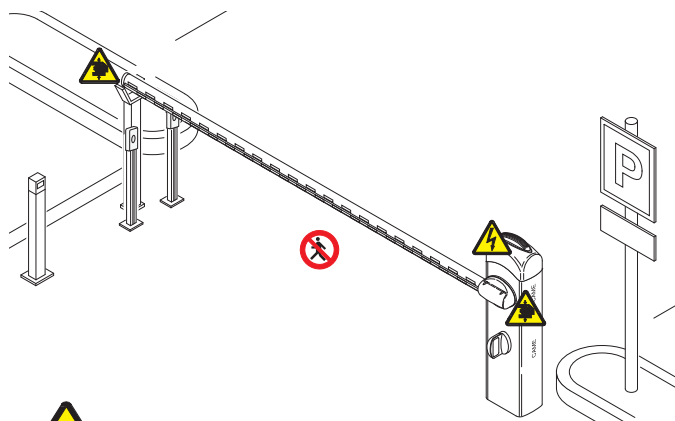
SPECIAL USER-INSTRUCTIONS AND RECOMMENDATIONS

• KEEP BARRIER OPERATION AREAS CLEAN AND FREE OF ANY OBSTRUCTIONS. MAKE SURE THE PHOTOCELL'S OPERATING FIELD IS CLEAR OF ANY OBSTRUCTIONS • DO NOT ALLOW CHILDREN TO PLAY WITH FIXED COMMANDS, OR TO LOITER IN THE BARRIER'S MANEUVERING AREA. KEEP ANY REMOTE CONTROL TRANSMITTERS OR ANY OTHER

COMMAND DEVICE AWAY FROM CHILDREN, TO PREVENT THE OPERATOR FROM BEING ACCIDENTALLY ACTIVATED • THE APPARATUS MAY BE USED BY CHILDREN OF EIGHT YEARS AND ABOVE AND BY PHYSICALLY, MENTALLY AND PERCEPTIVELY CHALLENGED PEOPLE, OR EVEN ONES WITHOUT ANY EXPERIENCE, PROVIDED THIS HAPPENS UNDER CLOSE SUPERVISION OR ONCE THEY HAVE BEEN PROPERLY INSTRUCTED TO USE THE APPARATUS SAFELY AND TO THE POTENTIAL HAZARDS INVOLVED • CHILDREN MUST NOT PLAY WITH THE APPARATUS. CLEANING AND MAINTENANCE BY USERS MUST NOT BE DONE BY CHILDREN, UNLESS PROPERLY SUPERVISED • FREQUENTLY CHECK THE SYSTEM FOR ANY MALFUNCTIONS OR SIGNS OF WEAR AND TEAR OR DAMAGE TO THE MOVING STRUCTURES, TO THE COMPONENT PARTS, ALL ANCHORING POINTS, INCLUDING CABLES AND ANY ACCESSIBLE CONNECTIONS • FREQUENTLY CHECK THE SYSTEM FOR ANY MALFUNCTIONS OR SIGNS OF WEAR AND TEAR OR DAMAGE TO THE MOVING STRUCTURES, TO THE COMPONENT PARTS, ALL ANCHORING POINTS, INCLUDING CABLES AND ANY ACCESSIBLE CONNECTIONS. KEEP ANY HINGES, MOVING JOINTS AND SLIDE RAILS PROPERLY LUBRICATED. PERFORM FUNCTIONAL CHECKS ON THE PHOTOCELLS AND SENSITIVE SAFETY EDGES, EVERY SIX MONTHS. CONSTANTLY CLEAN THE PHOTOCELLS' GLASS COVERS USING A SLIGHTLY WATER-MOISTENED CLOTH; DO NOT USE SOLVENTS OR CHEMICALS THAT COULD DAMAGE THE DEVICES • IF REPAIRS OR MODIFICATIONS ARE REQUIRED TO THE SYSTEM, RELEASE THE OPERATOR AND DO NOT USE IT UNTIL SAFETY CONDITIONS HAVE BEEN RESTORED • CUT OFF THE POWER SUPPLY BEFORE RELEASING THE OPERATOR FOR MANUAL OPENINGS AND BEFORE ANY OTHER OPERATION, TO PREVENT POTENTIALLY HAZARDOUS SITUATIONS. READ THE INSTRUCTIONS • IF THE POWER SUPPLY CABLE IS DAMAGED, IT MUST BE REPLACED BY THE MANUFACTURER OR AUTHORIZED TECHNICAL ASSISTANCE SERVICE, OR IN ANY CASE, BY SIMILARLY QUALIFIED PERSONS, TO PREVENT ANY RISK • IT IS FORBIDDEN FOR USERS TO PERFORM ANY OPERATIONS THAT ARE NOT EXPRESSLY REQUIRED OF THEM AND WHICH ARE NOT LISTED IN THE MANUALS. FOR ANY REPAIRS, MODIFICATIONS AND ADJUSTMENTS AND FOR EXTRA-ORDINARY MAINTENANCE, CALL TECHNICAL ASSISTANCE • LOG THE JOB AND CHECKS INTO THE PERIODIC MAINTENANCE LOG.

FURTHER RECOMMENDATIONS FOR ALL

• KEEP AWAY FROM AND DO NOT LOITER NEAR THE BARRIER AND MECHANICAL MOVING PARTS • DO NOT ENTER THE BARRIER'S AREA OF OPERATION WHEN IT IS MOVING • DO NOT COUNTER THE OPERATOR'S MOVEMENT AS THIS COULD RESULT IN DANGEROUS SITUATIONS • ALWAYS PAY SPECIAL ATTENTION TO ANY DANGEROUS POINTS, WHICH HAVE TO BE LABELED WITH SPECIFIC PICTOGRAMS AND/OR BLACK AND YELLOW STRIPES • WHEN USING A SELECTOR SWITCH OR A COMMAND IN MAINTAINED ACTIONS, KEEP CHECKING THAT THERE ARE NO PERSONS WITHIN THE OPERATING RANGE OF ANY MOVING PARTS, UNTIL THE COMMAND IS RELEASED • THE BARRIER MAY MOVE AT ANY TIME AND WITHOUT WARNING • ALWAYS CUT OFF THE POWER SUPPLY BEFORE PERFORMING ANY MAINTENANCE OR CLEANING.



Danger of hand crushing






Danger! High voltage.



No transiting while the barrier is moving

LEGEND

-  This symbol shows which parts to read carefully.
-  This symbol shows which parts describe safety issues
-  This symbol shows which parts to tell users about.

DESCRIPTION

Barrier made of varnished galvanized steel or AISI 304 satin finished stainless steel, set up for accessories.

Intended use

The automatic barrier is designed for private and public parking facilities.

-  Any installation and/or use other than that specified in this manual is forbidden.

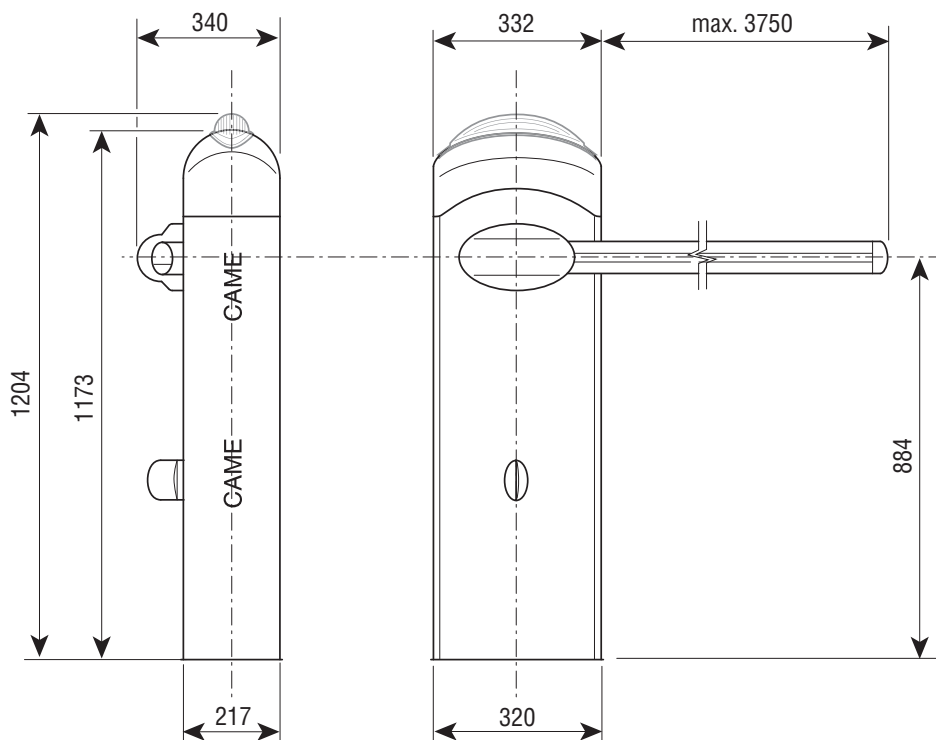
Limits to use

Type	G4040E - G4040IE
Maximum clearance width of the passage (m)	3.75

Technical data

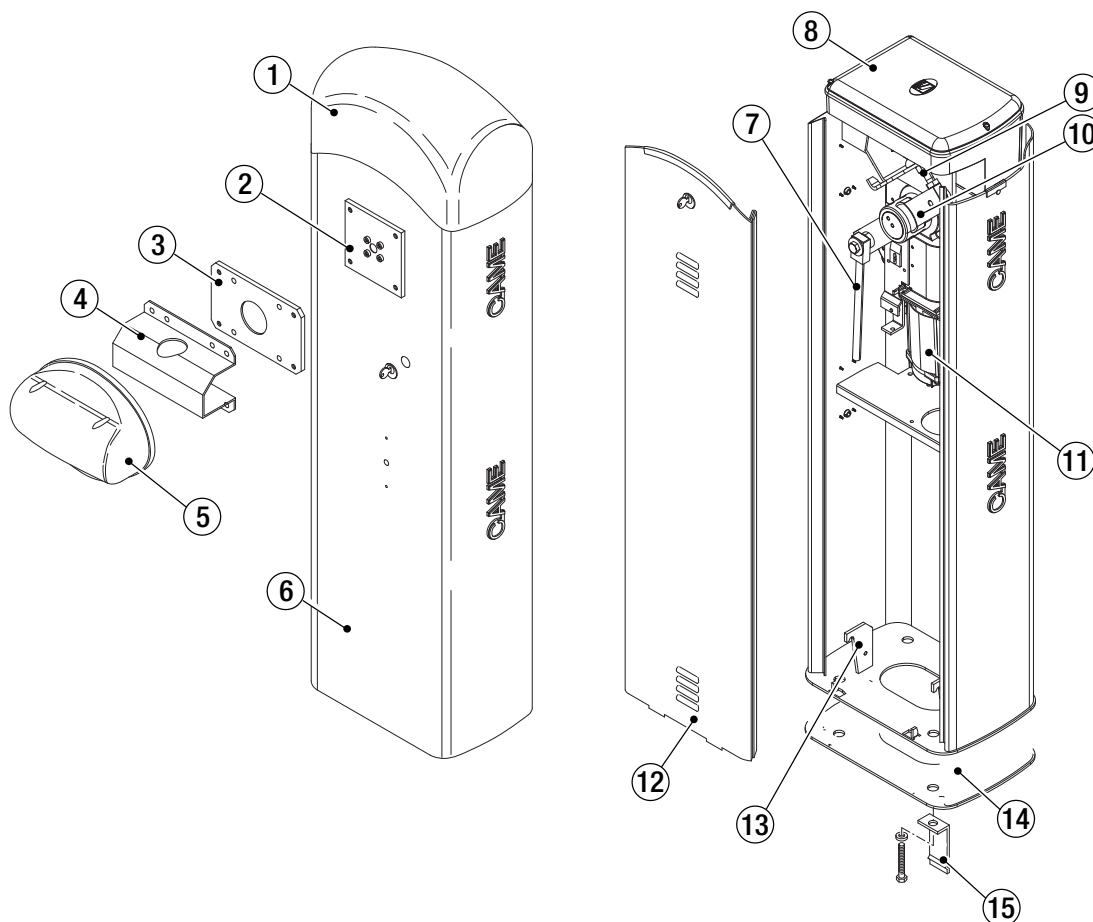
Type	G4040E - G4040IE
Protection rating (IP)	54
Power supply (V - 50/60 Hz)	230 AC
Power supply motor (V)	24 DC
Max draw (A)	15
Power rating (W)	300
Torque (Nm)	200
Opening time a 90° (s)	2 ÷ 6
Duty cycle	INTENSIVE USE
Operating temperature (°C)	-20 ÷ +55
Reduction ratio (i)	1/202
Insulation class	I
Weight (kg)	55

Dimensions (mm)



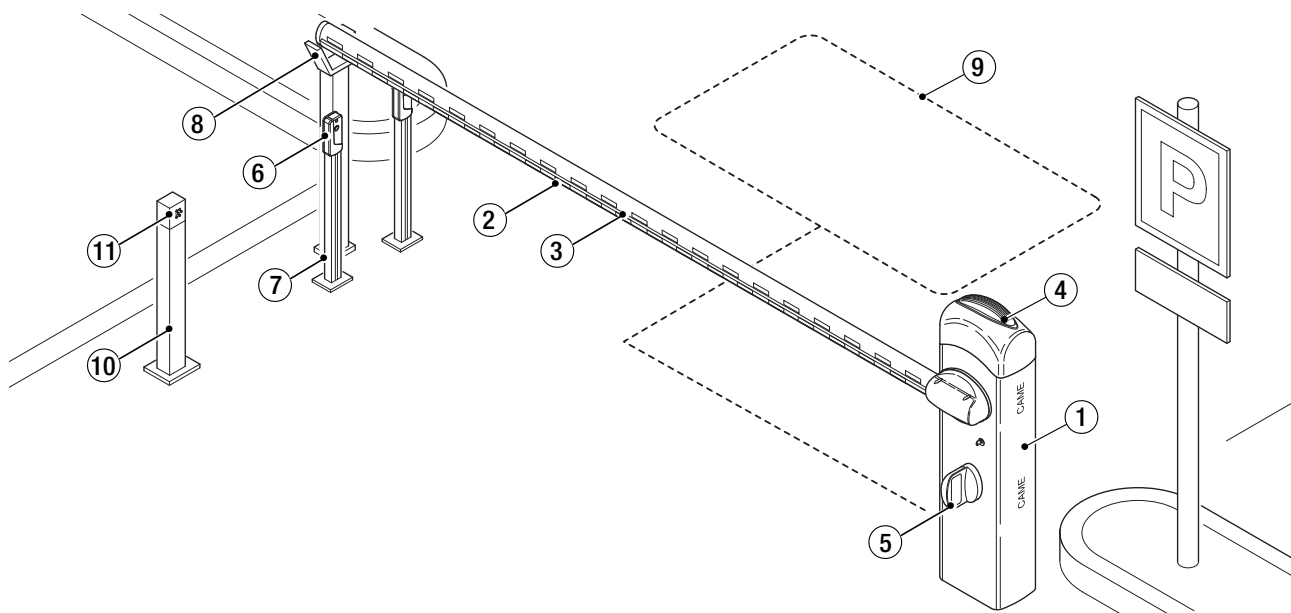
Description of parts

1. Dome
2. Motor-shaft plate
3. Mid plate
4. Boom-attachment cover
5. Protective casing shear proof
6. Cabinet
7. Anchoring pin
8. Control panel
9. Boom setting mechanical stop
10. Lever arm
11. Gearmotor with encoder
12. Inspection hatch
13. Anchoring bracket
14. Anchoring plate
15. Anchoring bracket



Standard installation

1. Barrier with boom
2. Reflective strips
3. Luminous cord
4. Flashing light
5. Photocell casing
6. Photocell
7. Small photocell post
8. Fixed rest
9. Coil
10. Control device post
11. Control device (keypad selector, transponder sensor)



GENERAL INSTRUCTIONS FOR INSTALLING

⚠ Only skilled, qualified staff must install this product.

Important! Using original CAME control and safety devices and accessories ensures easy installation and system maintenance.

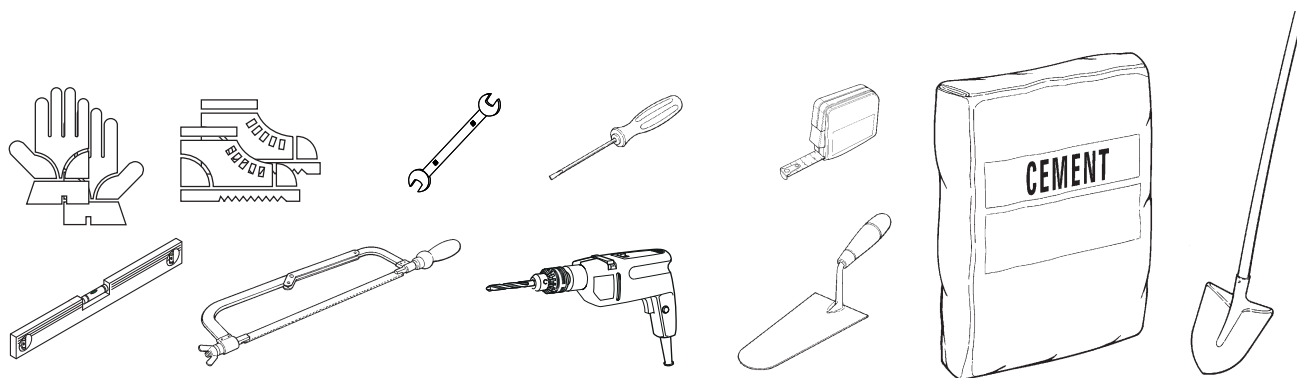
Preliminary checks

⚠ Before beginning, do the following:

- make sure the plate is anchored to a solid spot;
- make sure you have set up a suitable dual pole cut off device along the power supply that is compliant with the installation rules. It should completely cut off the power supply according to category III surcharge conditions (that is, with minimum contact openings of 3 mm);
- ⊕ Make sure that any connections inside the casing (ones that ensure continuity to the protection circuit) are fitted with additional insulation with respect to those of other electrical parts inside;
- set up suitable tubes and conduits for the electric cables to pass through, making sure they are protected from any mechanical damage.

Tools and materials

Make sure you have all the tools and materials you will need for installing in total safety and in compliance with applicable regulations. The figure shows some of the equipment installers will need.



Cable types and minimum thicknesses

Connection	Cable type	Cable length 1 < 10 m	Cable length 10 < 20 m	Cable length 20 < 30 m
Power supply 230 V AC	FROR CEI 20-22 CEI EN 50267-2-1	3G x 1.5 mm ²	3G x 2.5 mm ²	3G x 4 mm ²
Flashing light		2 x 0.5 mm ²	-	-
Photocell transmitters		2 x 0.5 mm ²		
Photocell receivers		4 x 0.5 mm ²		
Command and safety device	RG58	2 x 0.5 mm ²		
Antenna		max 10 m		
Metal mass detector		(see product literature)		

📖 If cable lengths differ from those specified in the table, establish the cable sections depending on the actual power draw of the connected devices and according to the provisions of regulation CEI EN 60204-1.

For multiple, sequential loads along the same line, the dimensions on the table need to be recalculated according to the actual power draw and distances. If connecting products that are not contemplated in this manual, see the literature accompanying said products

INSTALLATION

⚠ The following illustrations are mere examples. Consider that the space available where to fit the barrier and accessories will vary depending on the area where it is installed. It is up to each installer to select the most suitable solution.

⚠ Warning! Use hoisting equipment to transport and position the barrier.

During the set up and installing stages the barrier could be unstable and tip over. So, be careful to not lean on it until it is completely fastened.

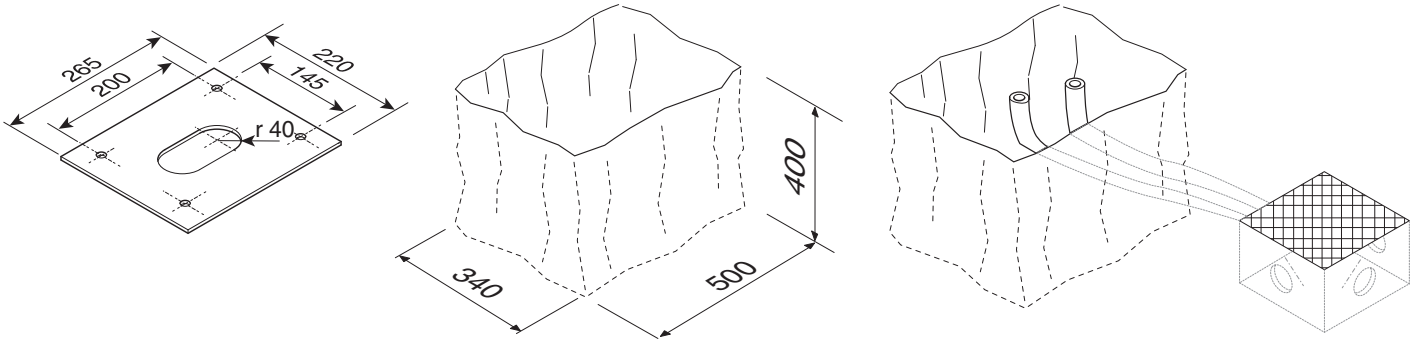
Preparing the fastening plate.

⚠ If the flooring does not allow for a sturdy fastening of the entry unit, you will have to set up a cement slab.

Dig a hole for the foundation frame.

Set up the corrugated tubes needed for making the connections coming out of the junction pit.

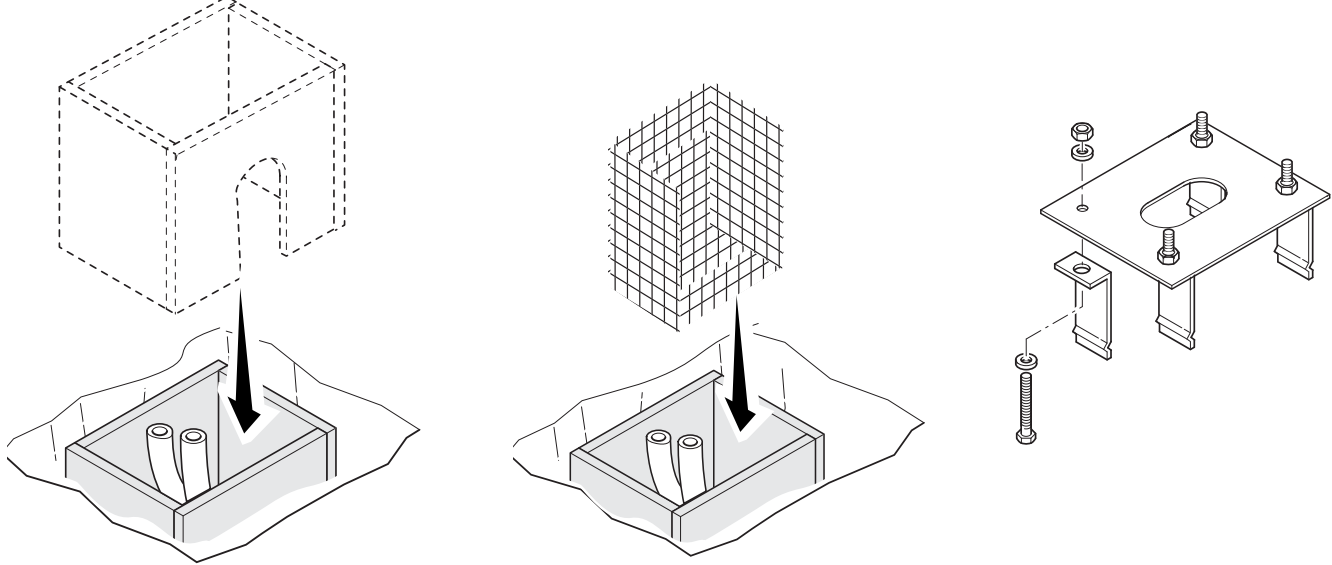
📖 The number of tubes depends on the type of system and the accessories you are going to fit.



Set up a foundation frame that is larger than the anchoring plate and sink it into the dug hole.

Fit an iron cage into the foundation frame to reinforce the concrete.

Assemble the four anchoring brackets to the anchoring plate.

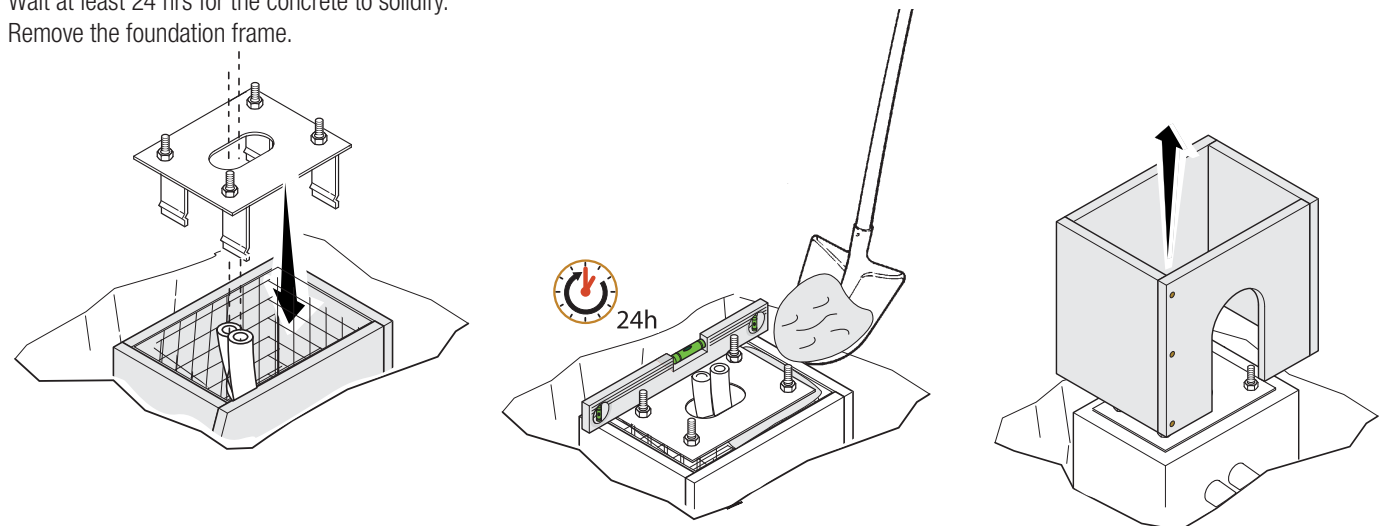


Place the plate over the iron cage.

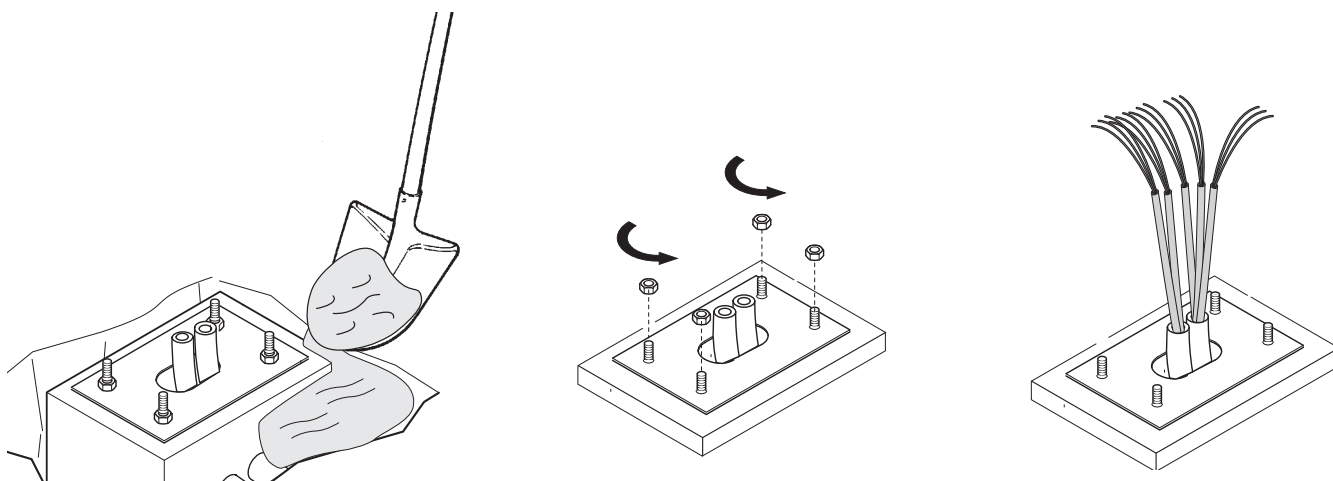
Fill the foundation frame with concrete. The base must be perfectly level with the bolts which are entirely above surface.

Wait at least 24 hrs for the concrete to solidify.

Remove the foundation frame.

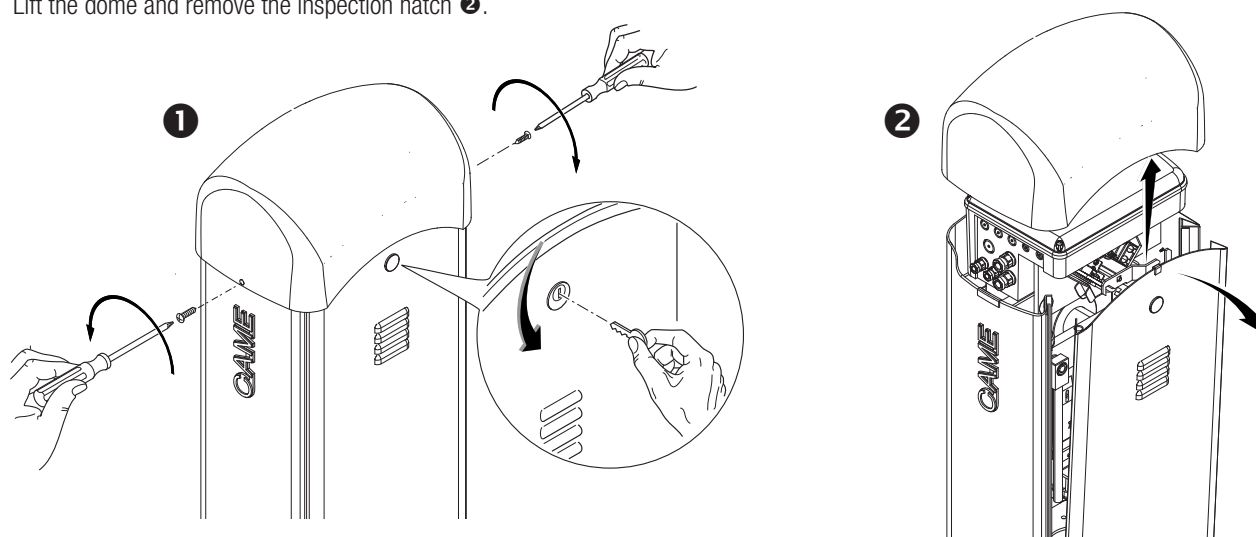


Fill the hole with earth around the concrete block.
Remove the nut and washer from the bolts
Fit the electric cables into the tubes so that they come out about 600 mm.



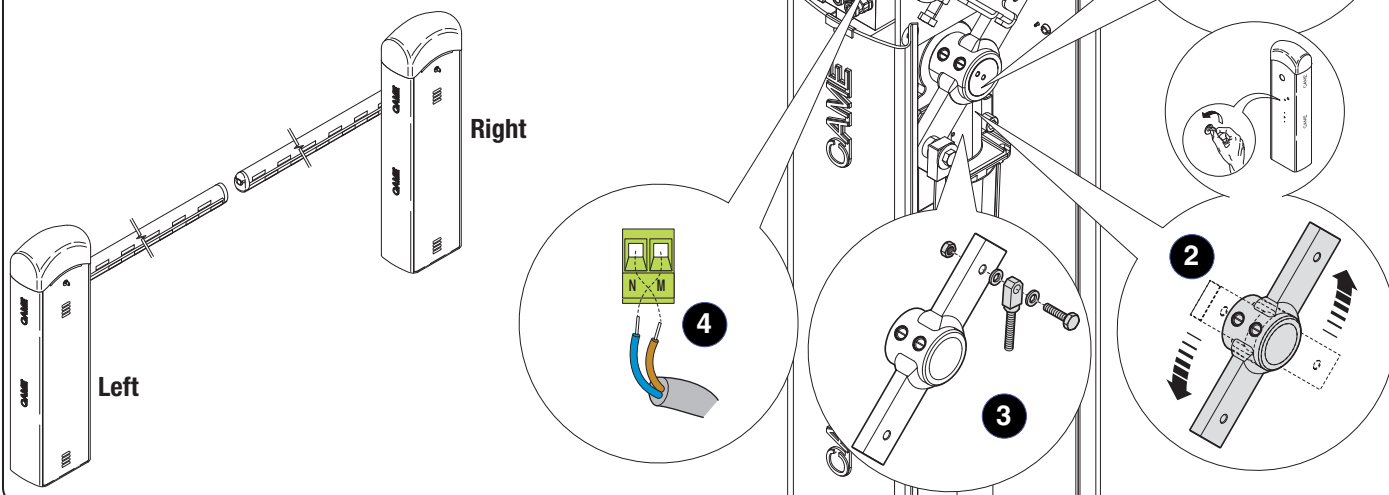
Preparing the barrier

Remove the screws from the dome, fit the key into the lock and turn it counter clockwise ①.
Lift the dome and remove the inspection hatch ②.




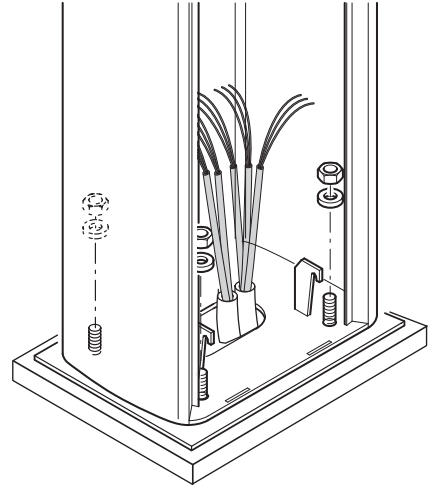
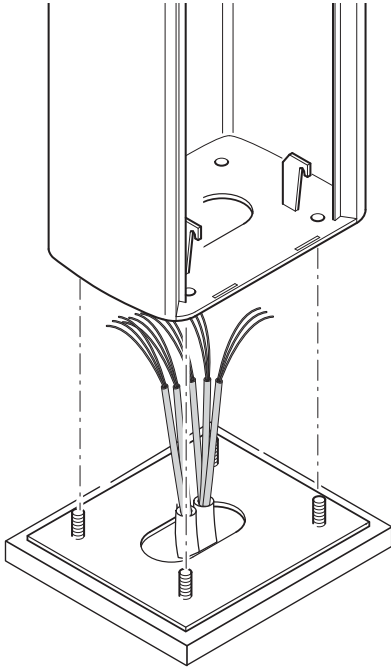
⚠ Warning! The barrier is set up for installing on the left.
When installing on the right, invert the boom's opening direction, as follows:

- remove the anchoring pin from the lever arm ①;
- release the gearmotor by using the key;
- turn the lever arm by 90° ②;
- lock the motor again;
- fasten the anchoring pin to the opposite hole on the arm ③;
- invert motor phase M with N ④.



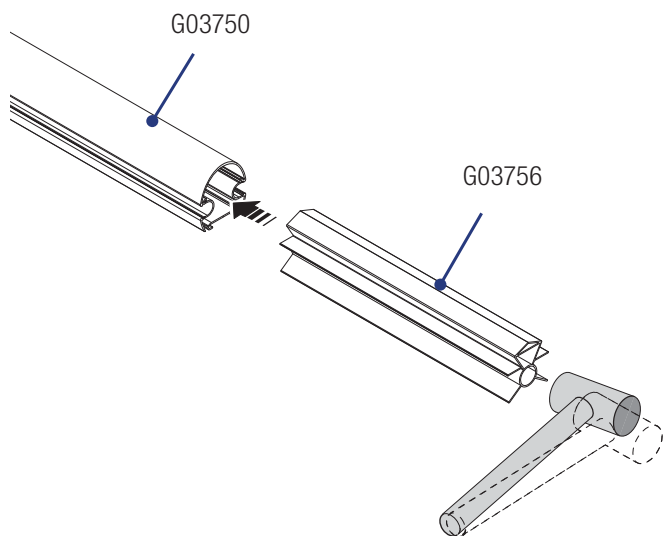
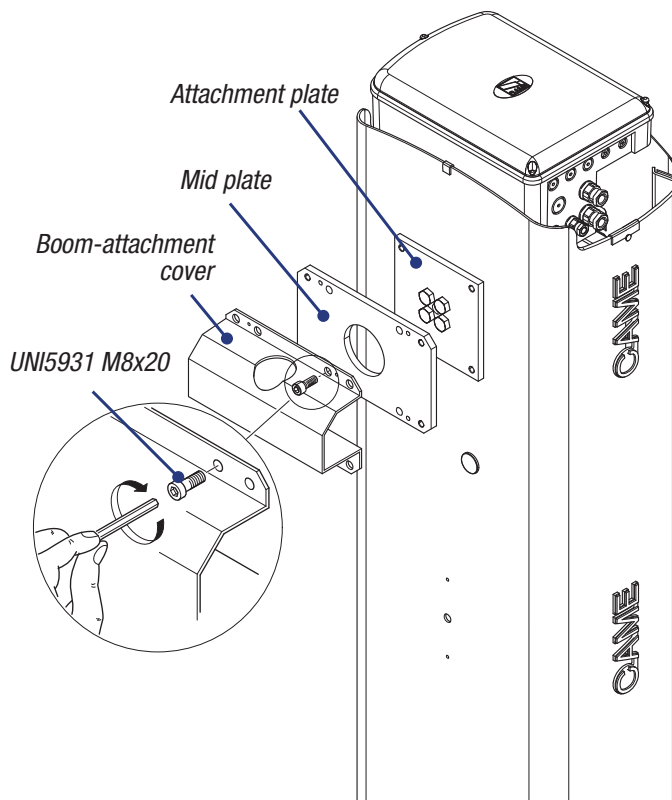
Installing the barrier

 The cabinet should be installed with the inspection hatch on the most accessible side to make any adjusting easier. Place the cabinet onto the anchoring plate and fasten it using nuts and washers.

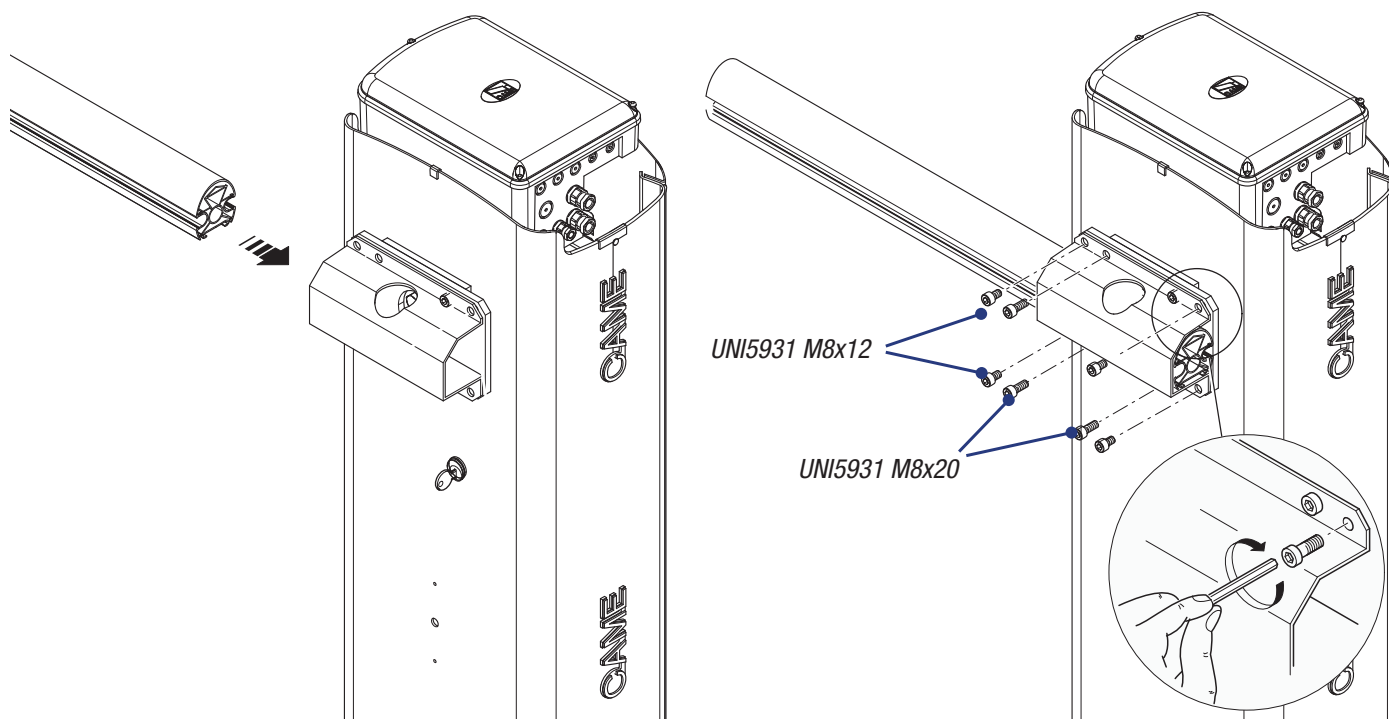


Assemble the boom-attaching cover, the mid plate and motor-shaft plate with a screw. Leave the screw loose to then facilitate fitting the boom.

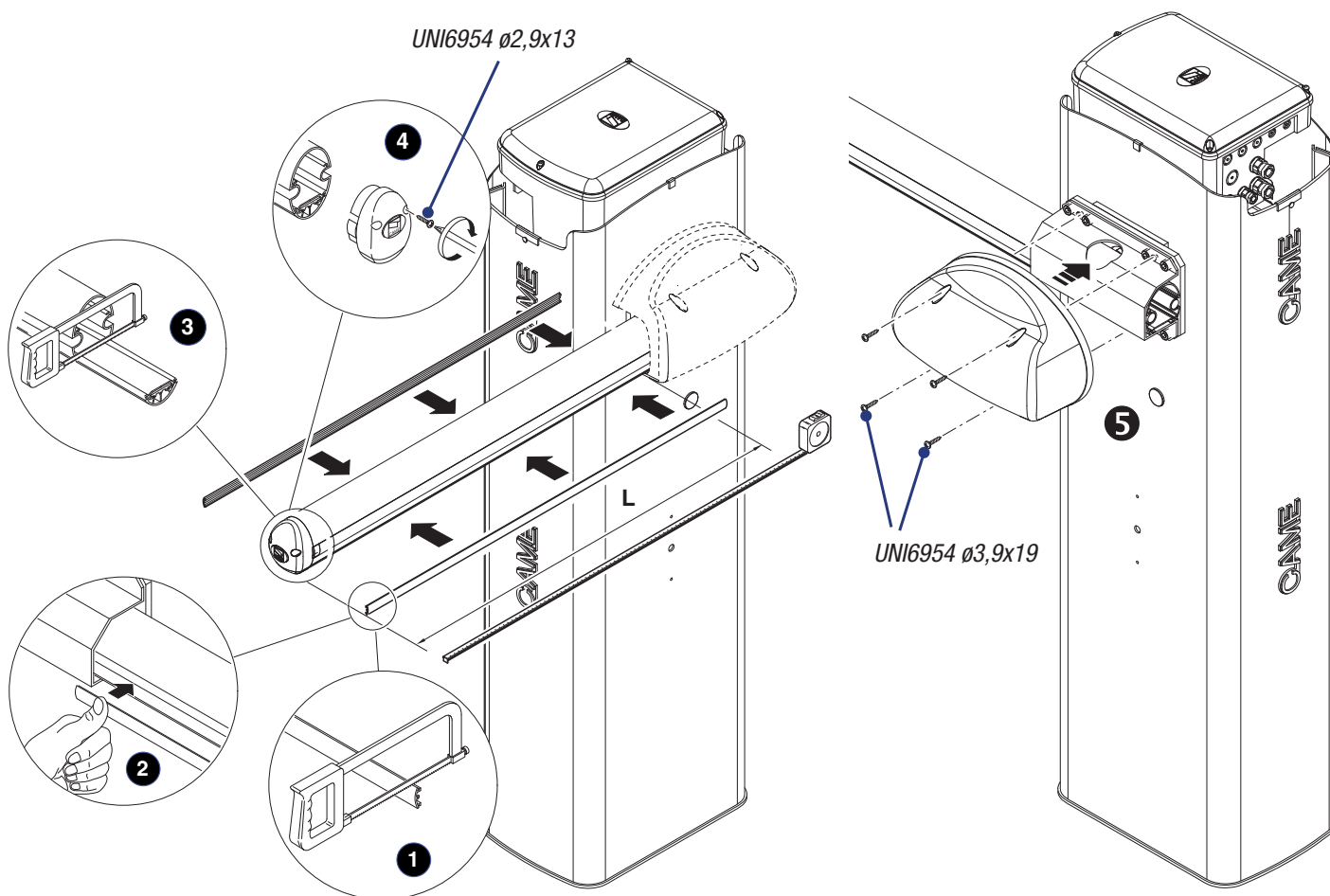
⚠ To mount with the G03750 boom, you will need to fit the G03756 reinforcement.



Fit the boom into the boom-attachment cover and fasten it using the screws.

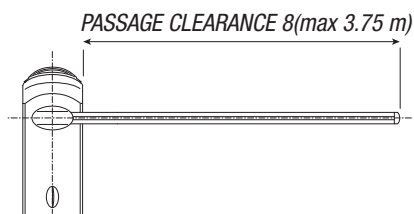


Cut the groove cover profiles to measure, and fit them into the grooves on both sides of the boom **1 2**.
 Fit the rubber anti-shock profile into the boom and cut off any excess **3**.
 Fasten the endcap using the screws **4**.
 Fit the anti-shearing protective cover onto the boom-attachment cover and fasten it using the screws **5**.



Balancing the boom

Before balancing the boom, check on the table below for congruences between the chosen spring, accessories and passage clearance.



	A Spring 001G02040 Ø 40 mm	B Spring 001G04060 Ø 50 mm	C Spring 001G06080 Ø 55 mm			
BOOM LENGTH (m)	1,5 ÷ 1,75	1,75 ÷ 2,25	2,25 ÷ 2,75	2,75 ÷ 3,25	3,25 ÷ 3,5	3,5 ÷ 3,75
Boom with shock-proof profile	A	A	A	B	B	C
Boom with shock-proof profile and 001G028401 luminous cord	A	A	B	B	B	C
Boom with skirt 001G0465	A	B	B	C	C	
Boom with 001G028401 luminous cord and 001G0465 skirt	A	B	B	C	C	
Boom with shock-proof profile and 001G02808 swing rest	A	B	B	C		
Boom with shock-proof profile, 001G028401 luminous cord and 001G02808 swing rest	A	B	B	C		

The boom includes the transparent groove cover and end cap.

⚠ WARNINGS!

001G02802 Cannot be used on barriers fitted with the 001G0465 skirt or 001G02808 swing rest

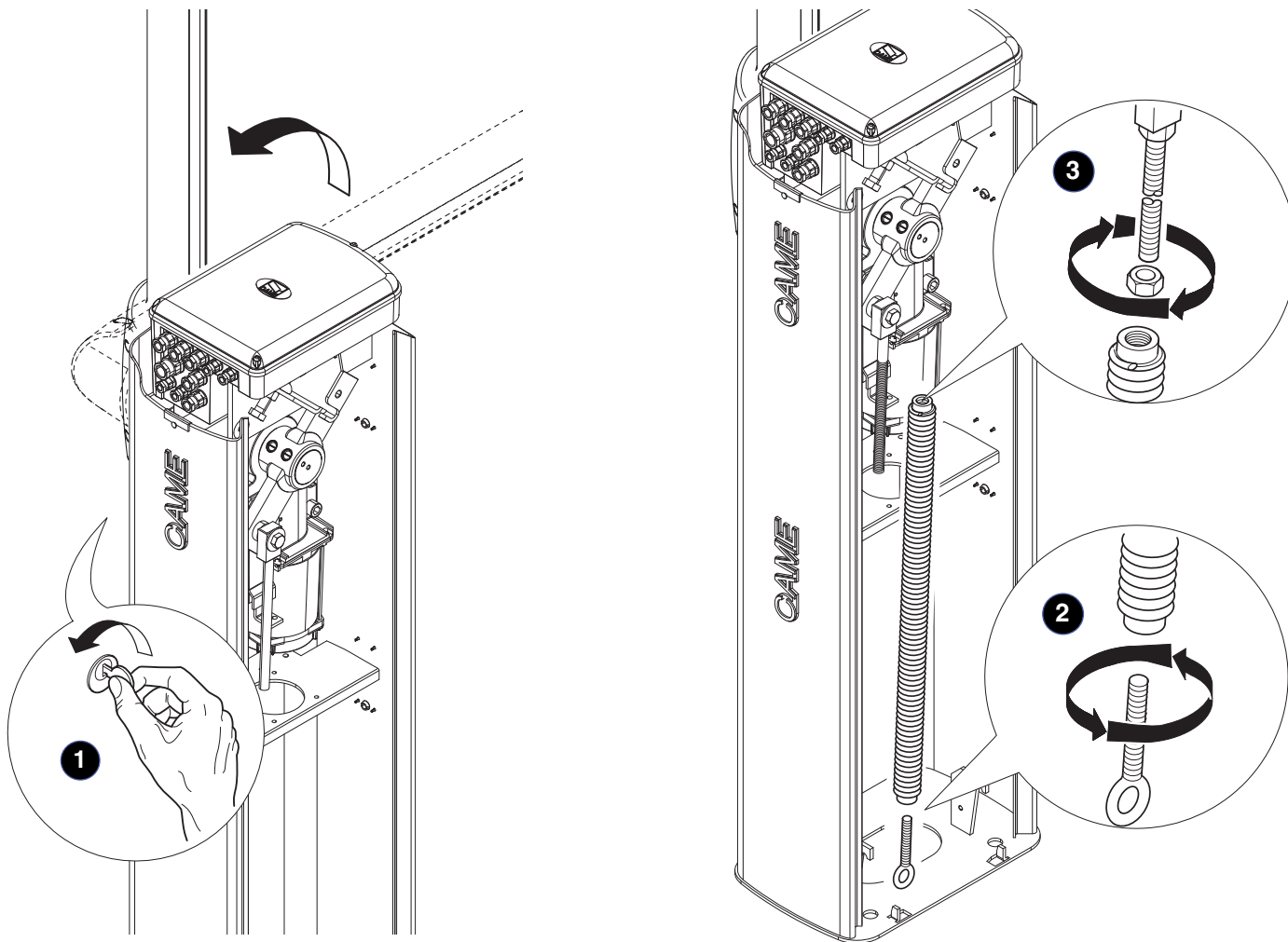
001G02808 For passage widths of up to 3 m.

001G02807 **MUST** be used with passage widths exceeding 3 m.

001G0465 - 001G02808 Cannot be used together.

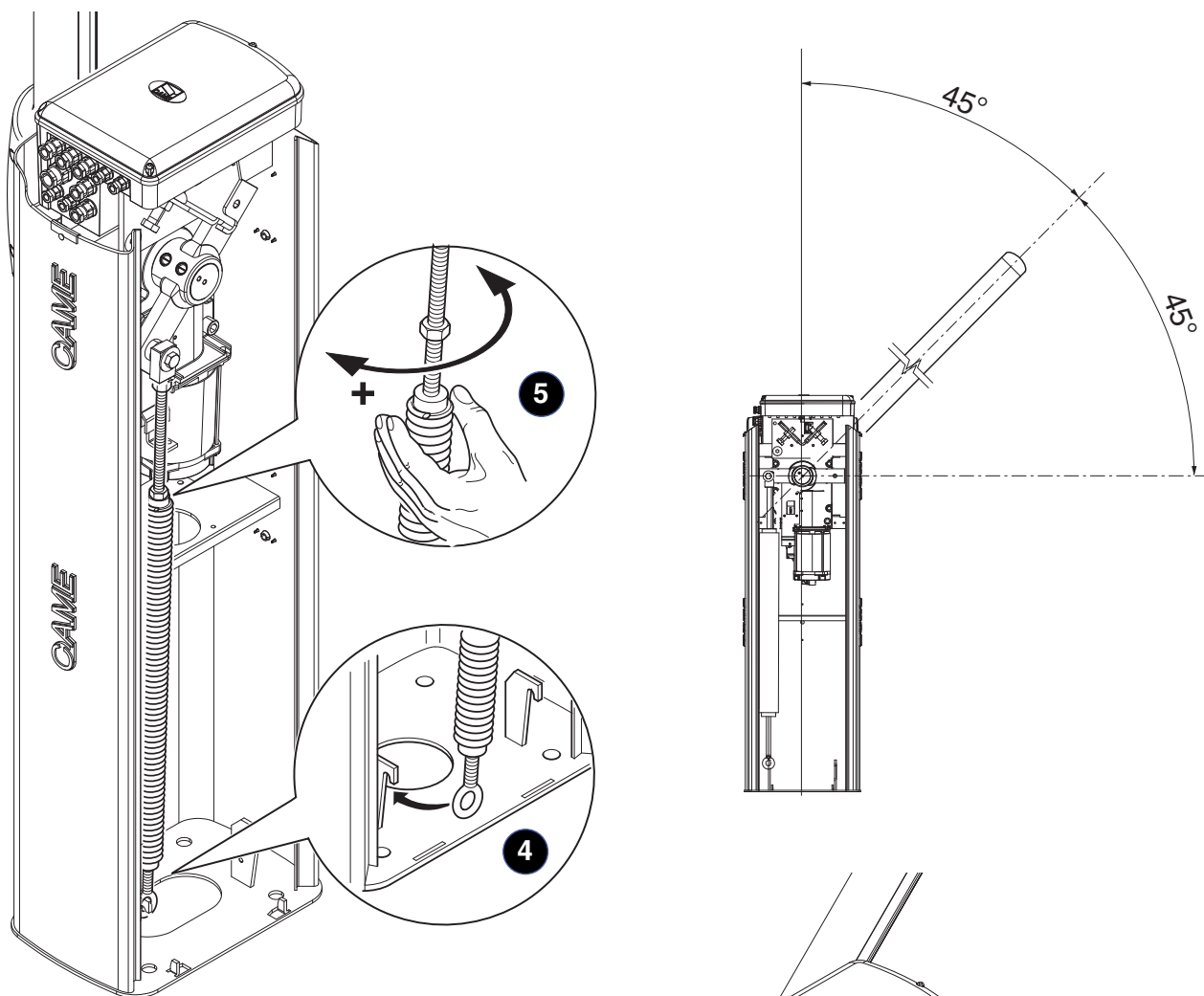
Release the gearmotor and position the boom vertically **1**. Lock the gearmotor again.

Tighten the eyelet rod under the spring **2**. The spring should be screwed to the anchoring pin **3**.



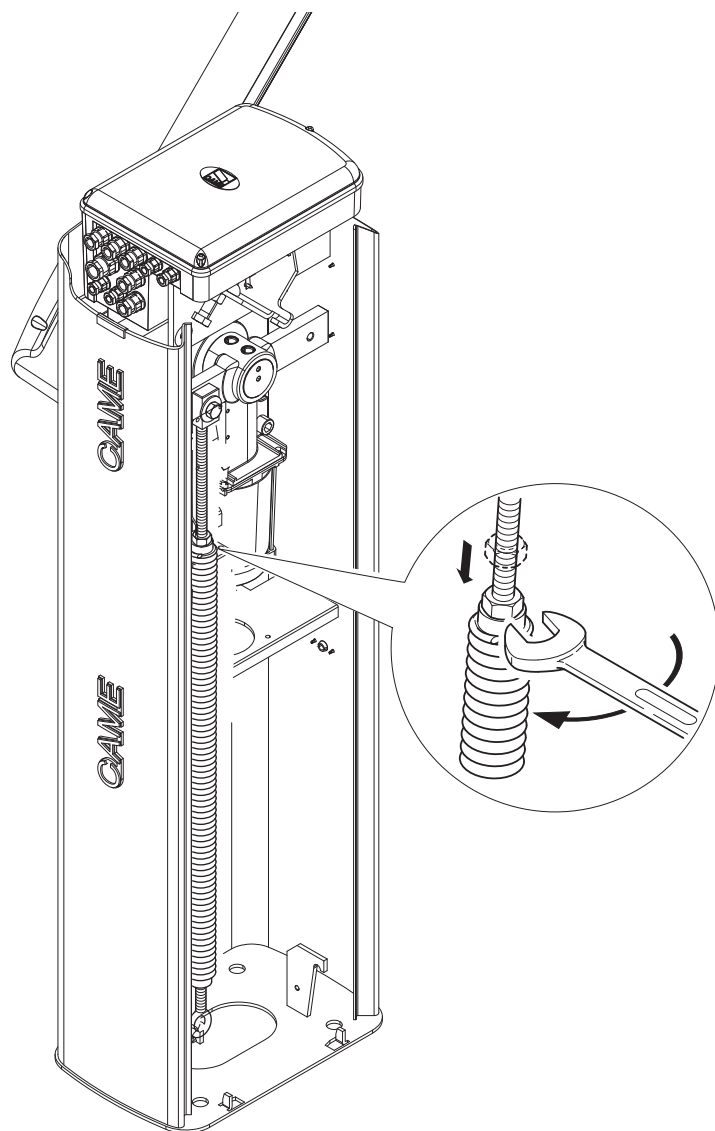
Hook the eyelet rod to the anchoring rod ④.

Release the gearmotor and manually turn the spring to increase or reduce traction ⑤. The boom should stabilize at 45°.



Fasten the counter nut and lock the gearmotor again.

📖 Check the proper working state of the spring.
With the boom raised vertically the spring is not taut.
With the boom lowered horizontally the spring is taut.



⚠ Warning! Before working on the control panel, cut off the main current supply and, if present, remove any batteries.

Functions on input and output contacts and time and user management details, are set up and viewable on the control panel's display. All connections are quick-fuse protected.

Description of parts

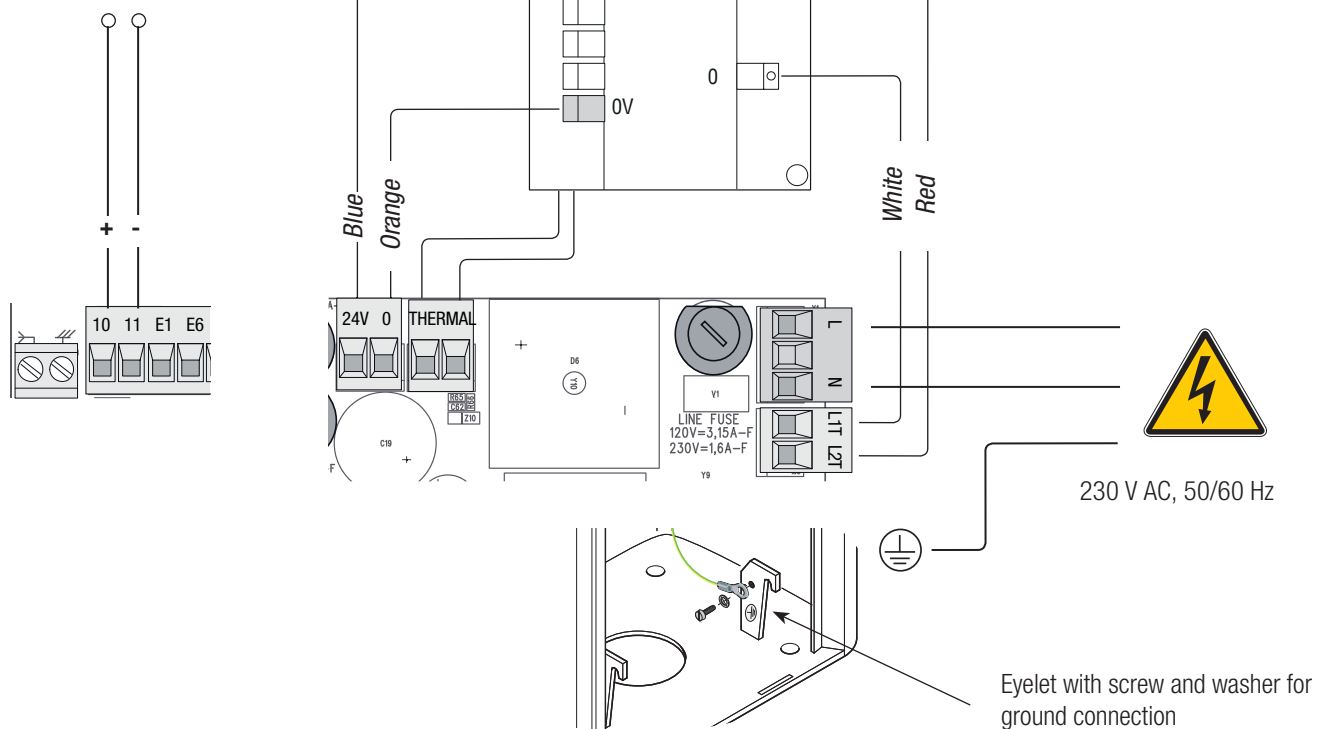
-
- This technical diagram illustrates the internal layout of the ZL39 control board. It features a variety of electronic components including integrated circuits (U1, U2, U3, U4, U5, U6, U7, U8, U9, U10, U11, U12, U13, U14, U15, U16, U17, U18, U19, U20, U21, U22, U23, U24, U25, U26, U27, U28, U29, U30, U31, U32, U33, U34, U35, U36, U37, U38, U39, U40, U41, U42, U43, U44, U45, U46, U47, U48, U49, U50, U51, U52, U53, U54, U55, U56, U57, U58, U59, U60, U61, U62, U63, U64, U65, U66, U67, U68, U69, U70, U71, U72, U73, U74, U75, U76, U77, U78, U79, U80, U81, U82, U83, U84, U85, U86, U87, U88, U89, U90, U91, U92, U93, U94, U95, U96, U97, U98, U99, U100), capacitors (C1, C2, C3, C4, C5, C6, C7, C8, C9, C10, C11, C12, C13, C14, C15, C16, C17, C18, C19, C20, C21, C22, C23, C24, C25, C26, C27, C28, C29, C30, C31, C32, C33, C34, C35, C36, C37, C38, C39, C40, C41, C42, C43, C44, C45, C46, C47, C48, C49, C50, C51, C52, C53, C54, C55, C56, C57, C58, C59, C60, C61, C62, C63, C64, C65, C66, C67, C68, C69, C70, C71, C72, C73, C74, C75, C76, C77, C78, C79, C80, C81, C82, C83, C84, C85, C86, C87, C88, C89, C90, C91, C92, C93, C94, C95, C96, C97, C98, C99, C100), resistors (R1, R2, R3, R4, R5, R6, R7, R8, R9, R10, R11, R12, R13, R14, R15, R16, R17, R18, R19, R20, R21, R22, R23, R24, R25, R26, R27, R28, R29, R30, R31, R32, R33, R34, R35, R36, R37, R38, R39, R40, R41, R42, R43, R44, R45, R46, R47, R48, R49, R50, R51, R52, R53, R54, R55, R56, R57, R58, R59, R60, R61, R62, R63, R64, R65, R66, R67, R68, R69, R70, R71, R72, R73, R74, R75, R76, R77, R78, R79, R80, R81, R82, R83, R84, R85, R86, R87, R88, R89, R90, R91, R92, R93, R94, R95, R96, R97, R98, R99, R100), and other components like diodes (D1, D2, D3, D4, D5, D6, D7, D8, D9, D10, D11, D12, D13, D14, D15, D16, D17, D18, D19, D20, D21, D22, D23, D24, D25, D26, D27, D28, D29, D30, D31, D32, D33, D34, D35, D36, D37, D38, D39, D40, D41, D42, D43, D44, D45, D46, D47, D48, D49, D50, D51, D52, D53, D54, D55, D56, D57, D58, D59, D60, D61, D62, D63, D64, D65, D66, D67, D68, D69, D70, D71, D72, D73, D74, D75, D76, D77, D78, D79, D80, D81, D82, D83, D84, D85, D86, D87, D88, D89, D90, D91, D92, D93, D94, D95, D96, D97, D98, D99, D100), transistors (Q1, Q2, Q3, Q4, Q5, Q6, Q7, Q8, Q9, Q10, Q11, Q12, Q13, Q14, Q15, Q16, Q17, Q18, Q19, Q20, Q21, Q22, Q23, Q24, Q25, Q26, Q27, Q28, Q29, Q30, Q31, Q32, Q33, Q34, Q35, Q36, Q37, Q38, Q39, Q40, Q41, Q42, Q43, Q44, Q45, Q46, Q47, Q48, Q49, Q50, Q51, Q52, Q53, Q54, Q55, Q56, Q57, Q58, Q59, Q60, Q61, Q62, Q63, Q64, Q65, Q66, Q67, Q68, Q69, Q70, Q71, Q72, Q73, Q74, Q75, Q76, Q77, Q78, Q79, Q80, Q81, Q82, Q83, Q84, Q85, Q86, Q87, Q88, Q89, Q90, Q91, Q92, Q93, Q94, Q95, Q96, Q97, Q98, Q99, Q100), and relays (K1, K2, K3, K4, K5, K6, K7, K8, K9, K10, K11, K12, K13, K14, K15, K16, K17, K18, K19, K20, K21, K22, K23, K24, K25, K26, K27, K28, K29, K30, K31, K32, K33, K34, K35, K36, K37, K38, K39, K40, K41, K42, K43, K44, K45, K46, K47, K48, K49, K50, K51, K52, K53, K54, K55, K56, K57, K58, K59, K60, K61, K62, K63, K64, K65, K66, K67, K68, K69, K70, K71, K72, K73, K74, K75, K76, K77, K78, K79, K80, K81, K82, K83, K84, K85, K86, K87, K88, K89, K90, K91, K92, K93, K94, K95, K96, K97, K98, K99, K100). The diagram also shows a terminal block (15) with pins 1 through 24, a fuse holder (16) with a 120V/3.15A-F fuse, a line fuse (17) with a 230V/1.6A-F fuse, and a memory module (18). Other components include a control board (19), a memory module (20), a power supply (21), a fuse (22), and a terminal block (23). The diagram is labeled with various component values and specifications, such as 'R700 R800', 'AF', 'CAME', 'ZL39', 'CONTROL BOARD', 'MEMORY', 'PROG.', 'C. BOARD', 'ACCESSORIES 2A', 'LINE FUSE', '120V=3,15A-F', '230V=1,6A-F', 'FC FA F', 'U1', 'U2', 'U3', 'U4', 'U5', 'U6', 'U7', 'U8', 'U9', 'U10', 'U11', 'U12', 'U13', 'U14', 'U15', 'U16', 'U17', 'U18', 'U19', 'U20', 'U21', 'U22', 'U23', 'U24', 'U25', 'U26', 'U27', 'U28', 'U29', 'U30', 'U31', 'U32', 'U33', 'U34', 'U35', 'U36', 'U37', 'U38', 'U39', 'U40', 'U41', 'U42', 'U43', 'U44', 'U45', 'U46', 'U47', 'U48', 'U49', 'U50', 'U51', 'U52', 'U53', 'U54', 'U55', 'U56', 'U57', 'U58', 'U59', 'U60', 'U61', 'U62', 'U63', 'U64', 'U65', 'U66', 'U67', 'U68', 'U69', 'U70', 'U71', 'U72', 'U73', 'U74', 'U75', 'U76', 'U77', 'U78', 'U79', 'U80', 'U81', 'U82', 'U83', 'U84', 'U85', 'U86', 'U87', 'U88', 'U89', 'U90', 'U91', 'U92', 'U93', 'U94', 'U95', 'U96', 'U97', 'U98', 'U99', 'U100', 'C1', 'C2', 'C3', 'C4', 'C5', 'C6', 'C7', 'C8', 'C9', 'C10', 'C11', 'C12', 'C13', 'C14', 'C15', 'C16', 'C17', 'C18', 'C19', 'C20', 'C21', 'C22', 'C23', 'C24', 'C25', 'C26', 'C27', 'C28', 'C29', 'C30', 'C31', 'C32', 'C33', 'C34', 'C35', 'C36', 'C37', 'C38', 'C39', 'C40', 'C41', 'C42', 'C43', 'C44', 'C45', 'C46', 'C47', 'C48', 'C49', 'C50', 'C51', 'C52', 'C53', 'C54', 'C55', 'C56', 'C57', 'C58', 'C59', 'C60', 'C61', 'C62', 'C63', 'C64', 'C65', 'C66', 'C67', 'C68', 'C69', 'C70', 'C71', 'C72', 'C73', 'C74', 'C75', 'C76', 'C77', 'C78', 'C79', 'C80', 'C81', 'C82', 'C83', 'C84', 'C85', 'C86', 'C87', 'C88', 'C89', 'C90', 'C91', 'C92', 'C93', 'C94', 'C95', 'C96', 'C97', 'C98', 'C99', 'C100', 'R1', 'R2', 'R3', 'R4', 'R5', 'R6', 'R7', 'R8', 'R9', 'R10', 'R11', 'R12', 'R13', 'R14', 'R15', 'R16', 'R17', 'R18', 'R19', 'R20', 'R21', 'R22', 'R23', 'R24', 'R25', 'R26', 'R27', 'R28', 'R29', 'R30', 'R31', 'R32', 'R33', 'R34', 'R35', 'R36', 'R37', 'R38', 'R39', 'R40', 'R41', 'R42', 'R43', 'R44', 'R45', 'R46', 'R47', 'R48', 'R49', 'R50', 'R51', 'R52', 'R53', 'R54', 'R55', 'R56', 'R57', 'R58', 'R59', 'R60', 'R61', 'R62', 'R63', 'R64', 'R65', 'R66', 'R67', 'R68', 'R69', 'R70', 'R71', 'R72', 'R73', 'R74', 'R75', 'R76', 'R77', 'R78', 'R79', 'R80', 'R81', 'R82', 'R83', 'R84', 'R85', 'R86', 'R87', 'R88', 'R89', 'R90', 'R91', 'R92', 'R93', 'R94', 'R95', 'R96', 'R97', '

Power supply

Terminals for powering up accessories:

- a 24 V AC normally;
- a 24 V DC when the emergency batteries are operating;

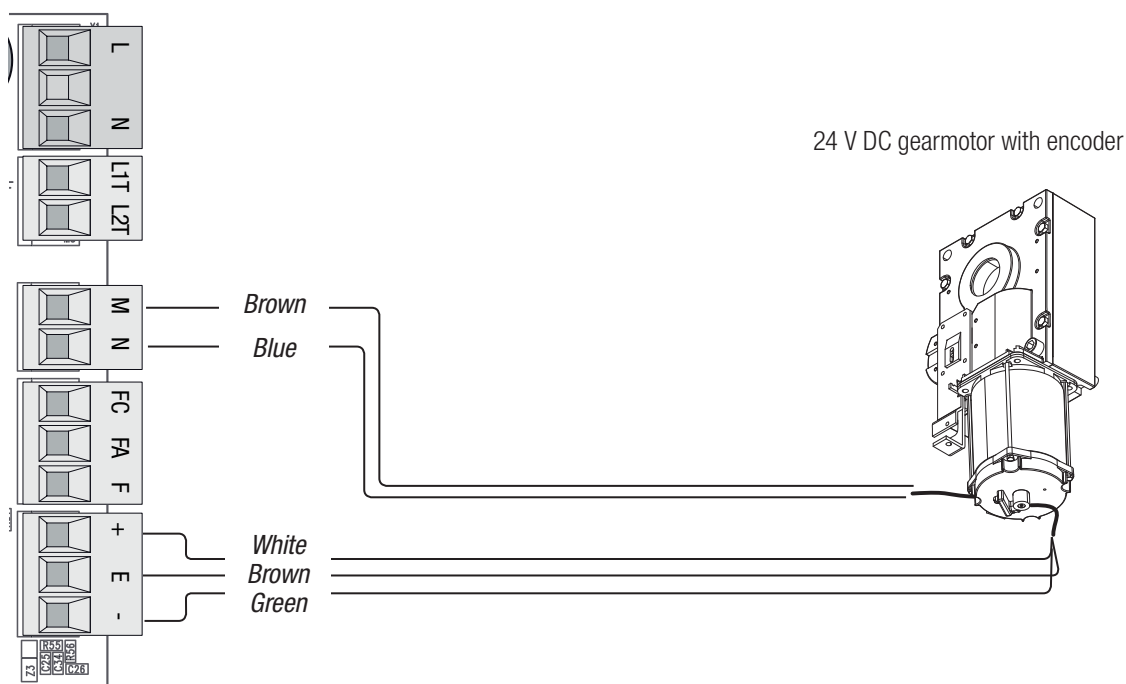
Overall allowed power: 40 W



Factory wiring

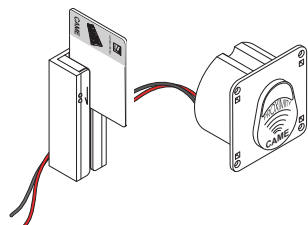
The gearmotor is already connected.

To install the barrier on the right, follow the instructions in the PREPARING THE BARRIER section.



Command and control devices

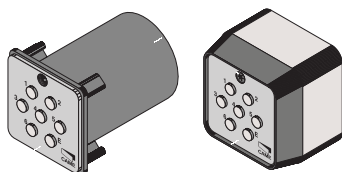
Transponder or card reader



Black

Red

Keypad selector



Blue

White

OPEN-CLOSE-INVERT function (step-step) from control device (NO contact).



ONLY CLOSE function from control device (NO contact).
Warning: in MAINTAINED ACTION mode, the control device must be connected to 2-4.



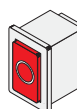
Warning! OPEN ONLY function from control device with NO contact. Connect only to paired or alternate installations. (See PAIRED CONNECTION or ALTERNATE CONNECTION).



OPEN ONLY function from control device with NO contact.
Warning: in MAINTAINED ACTION mode, the control device must be connected to 2-3.

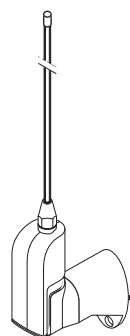



STOP button (NC contact). It is for stopping the barrier while excluding automatic closing. To resume movement, press the control button or one on another control device.

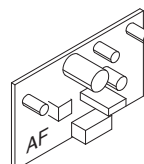


 If unused, select 0 (Deactivated) from function F1.

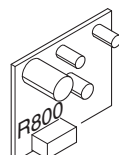
Antenna with RG58 cable




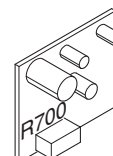
 Fit the AF card to control the barrier with a transmitter.



 Fit the R800 decoding card for recognition of the keypad selector.



 Fit the R700 decoding card for recognition of the TSP00 sensor or the LT001 card reader.



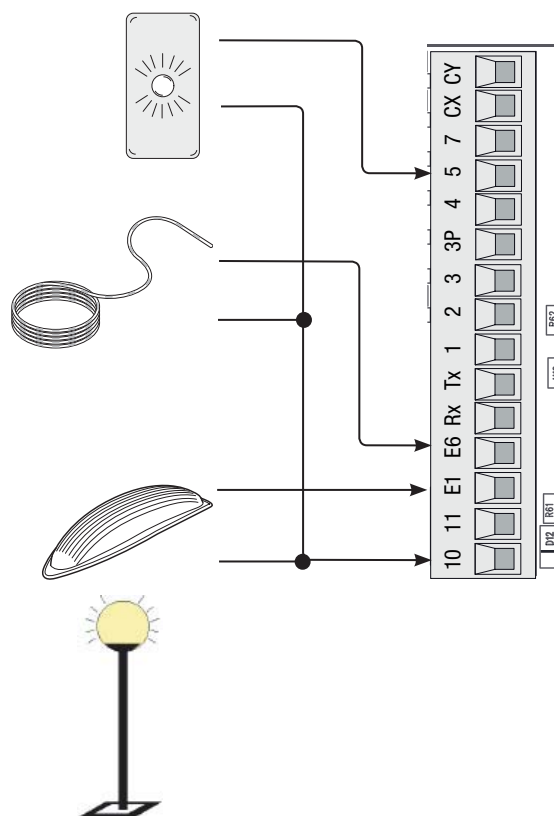
WARNING! For the system to work properly, before fitting any plug-in card, such as the AF or R800 one, YOU MUST CUT OFF THE MAIN POWER SUPPLY and, if present, disconnect any batteries.

Warning devices

Barrier indicator light (contact rated for: 24 V AC - 3 W max).
It warns of the barrier status, see function F 10.

Luminous cord (Contact rated for: 24 V AC - 32 W max).
It flashes during the boom's opening and closing phases, see function F 15.

Flashing dome light (Contact rated for: 24 V AC - 25 W max).
It flashes during the barrier's opening and closing phases.
Alternatively, it is possible to connect a cycle or courtesy lamp. (Contact rated for: 24 V AC - 25 W max).
An auxiliary external light can be connected and placed anywhere to increase lighting in the driveway.
Cycle: it stays on from the moment the boom starts opening until it is fully closed (including the automatic closing time).
Courtesy: it stays on for an adjustable time of between 60 and 180 seconds.



Safety devices

Configure contact CX or CY (NC), input for safety devices such as photocells, that are EN 12978 regulation compliant.
See CX input functions (Function F2) or CY (Function F3)-

C1 reopening while closing. When the boom is closing, opening the contact causes its movement to invert until fully opened;

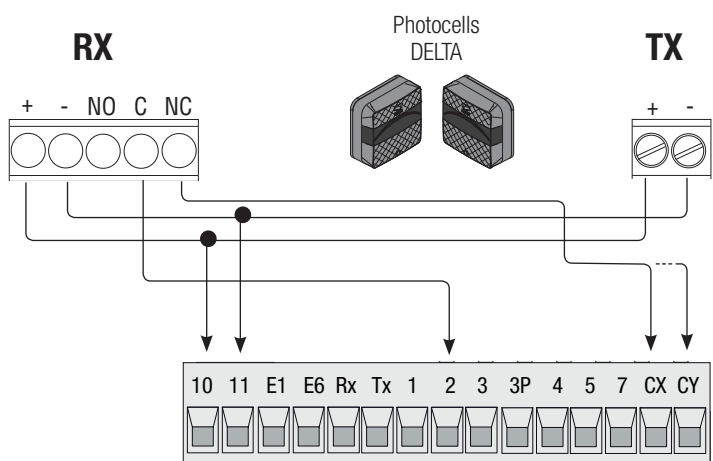
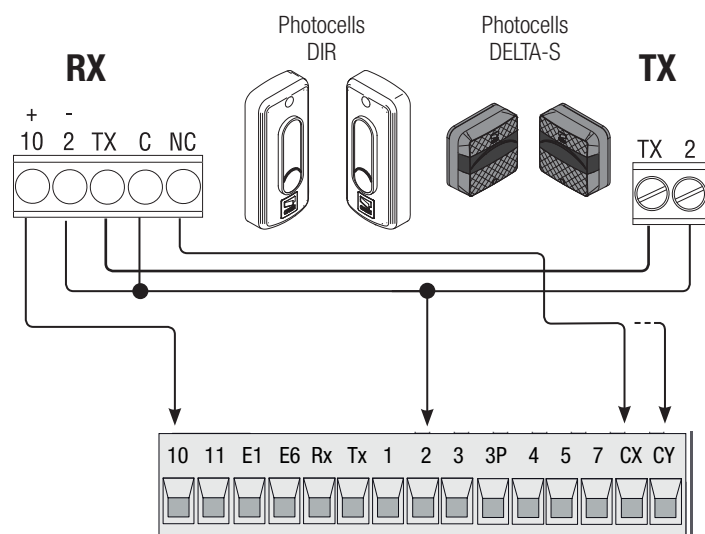
C4 obstruction wait. Stopping the boom, if it is moving, with resumption of movement after the obstruction is removed.

C5 immediate closing. Closing the boom after a vehicle has passed through the operating area of the safety devices.

C9 immediate closing with obstruction wait when closing. Closing the boom after a vehicle has passed through the operating area of the safety devices.

During the closing phase, the devices also perform the function of **C4 obstruction wait**.

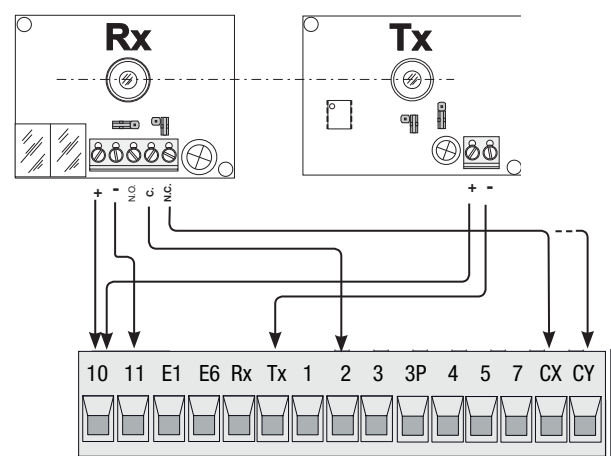
If unused, contacts CX and CY should be deactivated during programming.



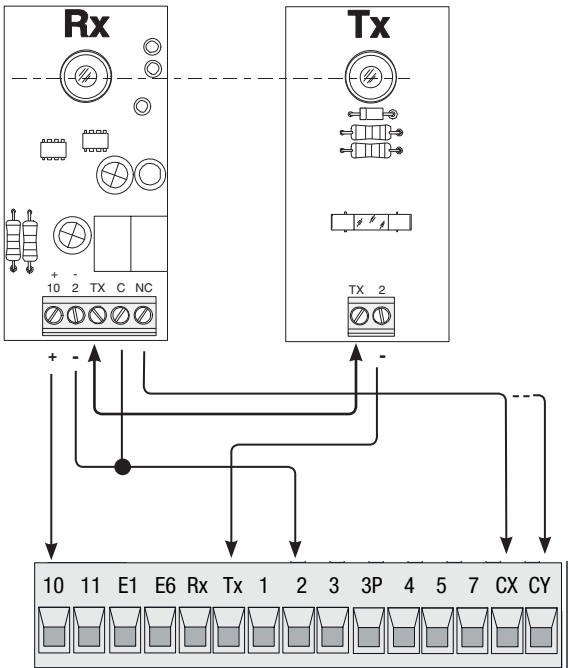
Photocell's safety connection

Upon each open or close command, the board verifies that the safety systems work. Any malfunction inhibits any command.
Select, from Function F 5, on which inputs to activate.

DELTA



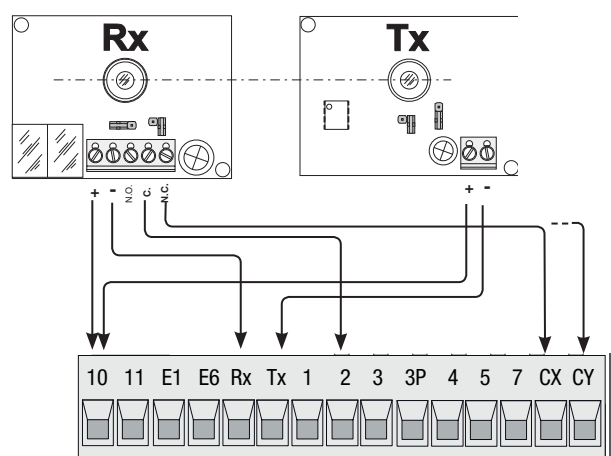
DIR / DELTA S



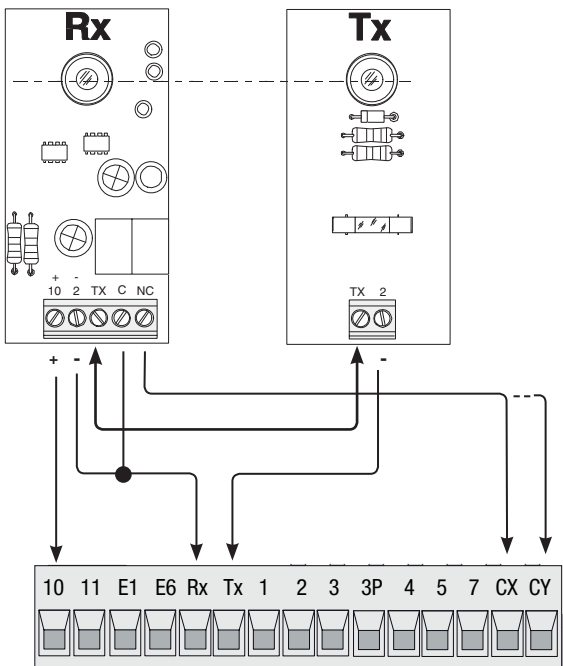
Sleep Mode

The Sleep mode function is for reducing energy consumption of the stand-by photocells.
Select 1 from function F 60.

DELTA



DIR / DELTA S



Establishing the endstop points

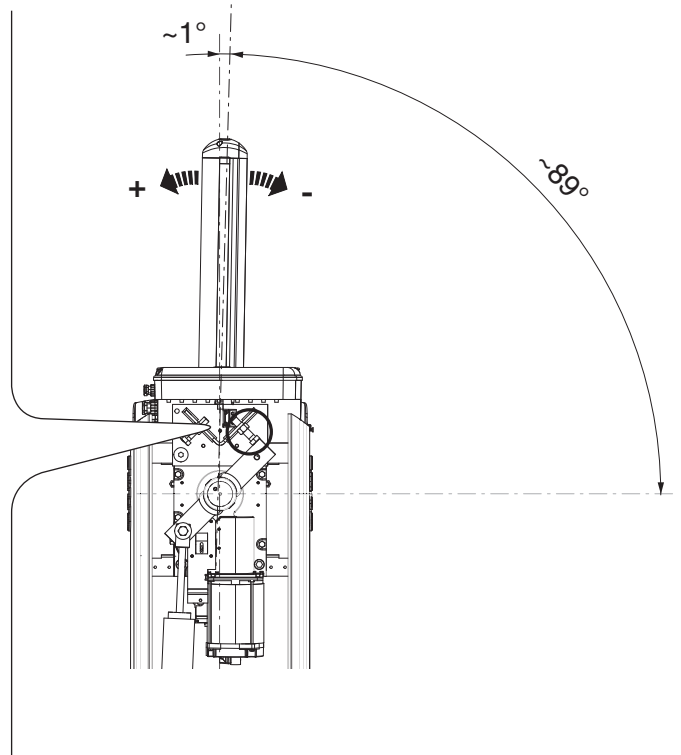
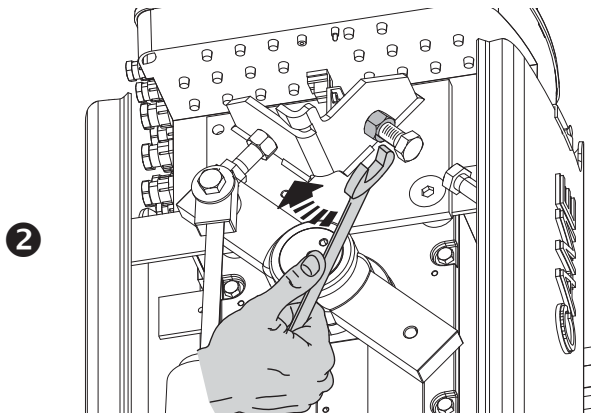
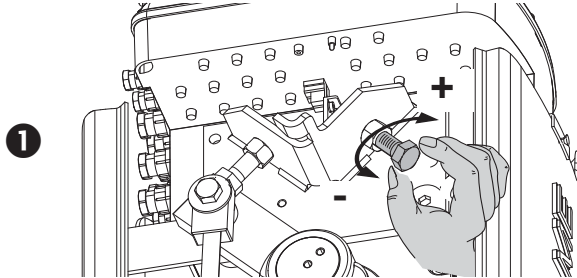
Close the inspection hatch and power up the system. Activate the barrier to check whether the boom is parallel to the road surface when closed and at about 89° when open.

⚠ The boom's opening and closing maneuvers must be performed with the inspection hatch closed.

To correct the boom's vertical position:

- lower the boom;
- open the inspection hatch;
- turn the opening mechanical stop clockwise to increase the boom's travel or counter clockwise to reduce it ❶.

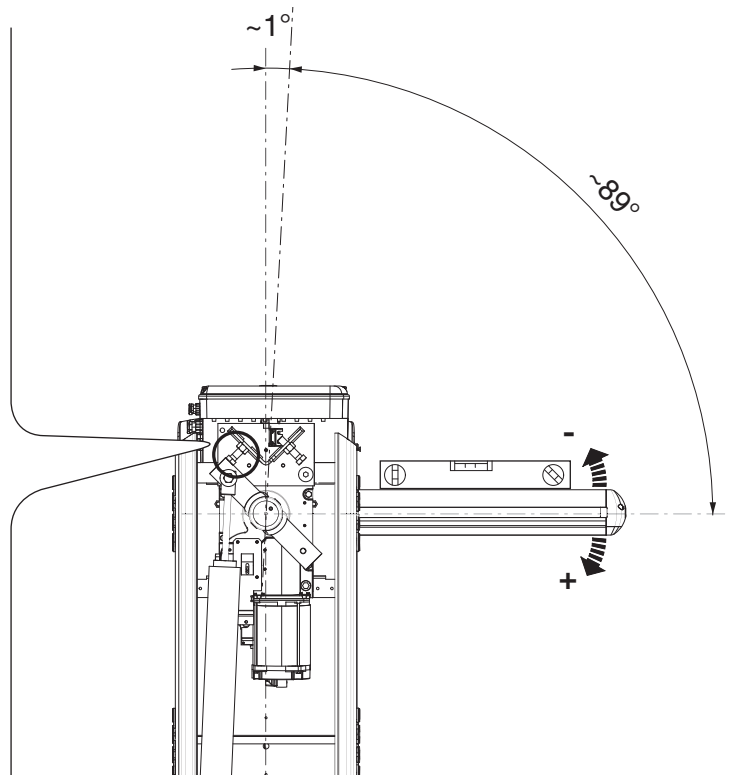
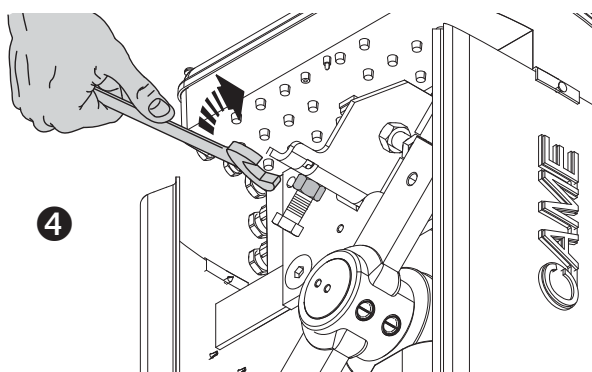
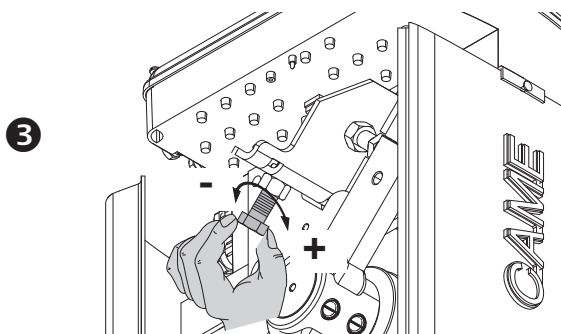
Fasten the stop with a counter nut ❷.



To correct the horizontal position:

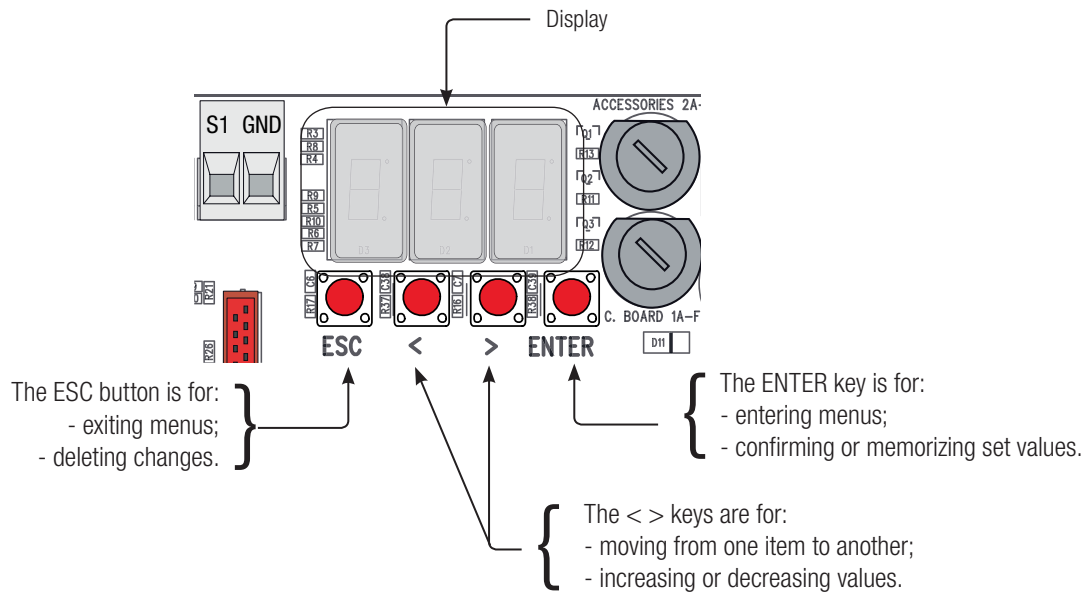
- raise the boom;
- turn the mechanical closing stop clockwise to increase the boom travel or counter clockwise to reduce it ❸.

Fasten the stop with a counter nut ❹.

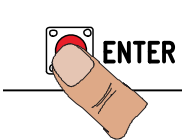


⚠ During programming, the barrier must not be moving.

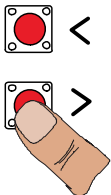
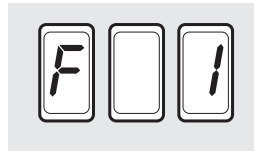
Description of programming commands



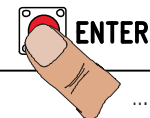
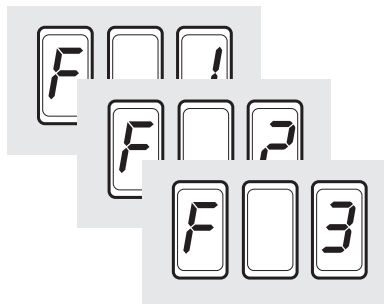
Browsing the menu



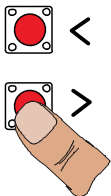
To enter the menu, keep the ENTER button pressed for at least one second.



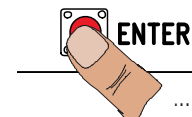
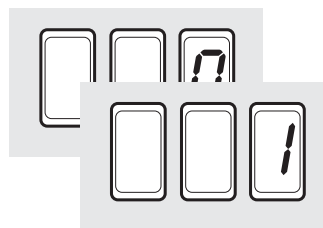
To select menu items, use the arrow keys ...



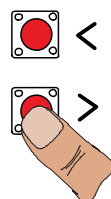
... then press ENTER



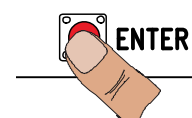
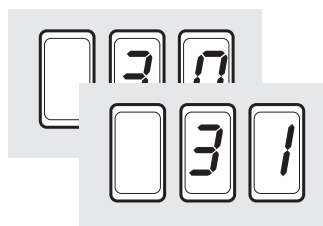
also for the submenus, use the arrow keys to select ...



... then press ENTER



To increase or reduce the value use the arrows...



... the press ENTER to confirm ...



... to exit the menu, wait 10 seconds or press ESC.

Functions map

F 1	Total stop function (1-2)
F 2	Function associated to input CX
F 3	Function associated to input CY
F 5	Safety test function
F 6	Maintained action function
F 9	Obstruction detection with motor idle function
F 10	Warning light function
F 11	Encoder exclusion
F 14	Sensor type selection function
F 15	Intermittent luminous cord function
F 18	Additional light function
F 19	Automatic closing time
F 21	Preflashing time
F 22	Working time
F 25	Courtesy light time
F 28	Adjusting opening speed
F 29	Adjusting closing speed
F 30	Adjusting opening slow-down speed
F 31	Adjusting closing slow-down speed
F 33	Adjusting calibration speed
F 34	Sensitivity during movement
F 35	Sensitivity during slow-down
F 37	Adjusting the opening slow-down starting point
F 38	Adjusting the closing slow-down starting point
F 49	Enabling serial connections
F 50	Saving data in memory roll
F 51	Reading memory roll data
F 52	Transferring parameters from Master to Slave
F 60	Sleep Mode function
F 61	Pre-flashing function
U 1	Type of command to associate to a user via radio control
U 2	Deleting single users
U 3	Deleting all users
A 1	Boom-type setting
A 2	Motor test
A 3	Calibrating boom travel
A 4	Resetting parameters
A 5	counting the number of maneuvers
H 1	Software version

Functions menu

 **IMPORTANT! Start programming by first performing the following: A1 BOOM-TYPE SETTING, A2 MOTOR TEST, F1 TOTAL STOP and A3 CALIBRATING BOOM TRAVEL.**

F1	Total stop [1-2]	0 = Deactivated (default) / 1 = Activated
NC input - boom stop while excluding any automatic stop; to resume movement, use a control device. Connect the safety device to 1-2.		
F2	Input [2-CX]	0 = Deactivated (default) / 1 = C1 / 4 = C4 / 5 = C5 / 9 = C9
NC Input - For associating: C1 = reopening during closing for photocells, C4 = obstruction wait, C5 = immediate closing, C9 = immediate closing with obstruction wait when closing.		
F3	Input [2-CY]	0 = Deactivated (default) / 1 = C1 / 4 = C4 / 5 = C5 / 9 = C9
NC Input - For associating: C1 = reopening during closing for photocells, C4 = obstruction wait, C5 = immediate closing, C9 = immediate closing with obstruction wait when closing.		

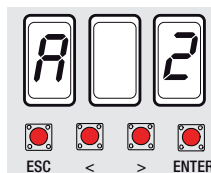
F5	Safety test	0 = Deactivated (default) / 1 = CX / 2 = CY / 3 = CX+CY
After every opening or closing command, the board will check whether the photocells are working properly.		
F6	Maintained action	0 = Deactivated (default) / 1 = Activated
The barrier opens and closes by keeping one button pressed. Opening button on 2-3 and closing button on 2-4. When this function is activated, all other control devices, even radio ones, are excluded.		
F9	Obstruction detection with motor idle	0 = Deactivated (default) / 1 = Activated
With the barrier closed, open or after a total stop, the operator stays still if the safety devices (photocells and sensitive edges) detect an obstruction.		
F10	Warning light	0 = lit with boom raised and moving (default) / 1 = flashes intermittently each half second when opening when closing it flashes intermittently every second permanently lit with the boom raised off with the boom lowered
It warns of the barrier status. The light bulb is connected to 10-5.		
F11	Excluding the encoder	0 = encoder activated (default) / 1 = encoder deactivated
It excludes management of slow downs, obstruction detection and sensitivity.		
F14	Sensor type selection	0 = transponder sensor or magnetic card reader command 1 = control with keypad selector (default)
Setting the type of sensor for controlling the barrier.		
F 15	Luminous cord intermittance	0 = Moving boom (default) / 1 = Moving and closed boom
It warns of the status of the barrier with intermittent lights.		
F18	Additional light	0 = Flashing light(default) / 1 = Cycle / 2 = Courtesy
Output on [10-E1]. The flashing light works when opening and closing. The cycle lamp stays on from the moment in which the barrier starts opening until it closes completely (including the automatic closing time). In case the automatic closing is not inserted, it stays on only during the movement. The courtesy light stays on for a fixed 180 seconds or it can be adjusted, see function F 25.		
F19	Automatic closing time	0 = Deactivated (default) / 1 = 1 s / 2 = 2 s / ... / 180 = 180 s
The first automatic-closing wait starts when the opening endstop point is reached and can be set to between 1 and 180 seconds. The automatic closing does not activate if any of the safety devices trigger when an obstruction is detected, after a total stop or during a power outage.		
F21	Preflashing time	0 = Deactivated (default) / 1 = 1 s / ... / 5 = 5 s
After an opening or closing command, the flashing light connected to 10-E1, flashes from 1 to 10 seconds before the maneuver starts.		
F22	Working time	5 = 5 s / / 120 = 120 s (default)
Gearmotor working time during opening and closing. The working time can be adjusted between 5 and 120 seconds.		
F25	Courtesy light time	5 = 5 s / / 120 = 120 s (default).
Supplementary light, that stays lit during the barrier's opening and closing movement. The time may be adjusted between 5 and 120 seconds		
F28	Opening maneuver speed	70 = Minimum speed / ... / 100 = Maximum speed.
Setting the boom's opening speed, calculated as a percentage. ⚠ Warning: the speed parameter fields vary depending on the type of boom: - for jointed booms, of 2 m and 4 m, set the speed percentage to between 70 and 100; - for booms of 6 m and 8 m, set the speed percentage to between 80 and 100.		
F 29	Closing maneuver speed	70 = Minimum speed / ... / 100 = Maximum speed.
Setting the boom's closing speed, calculated as a percentage. ⚠ Warning: the speed parameter fields vary depending on the type of boom: - for jointed booms, of 2 m and 4 m, set the speed percentage to between 70 and 100; - for booms of 6 m and 8 m, set the speed percentage to between 80 and 100.		

F 30	Opening slow-down speed	15 = Minimum speed / ... / 40 = Maximum speed
Setting the boom's opening slow-down speed, calculated as a percentage. ⚠ Warning: the speed parameter fields vary depending on the type of boom: - for jointed booms of 2 m, set the slow-down speed percentage to between 20 and 40; - for booms of 4 m, set the slow-down speed percentage to between 20 and 30; - for booms of 6 m and 8 m, set the slow-down speed percentage to between 15 and 40.		
F31	Closing slow-down speed	15 = Minimum speed / ... / 40 = Maximum speed
Setting the boom's closing slow-down speed, calculated as a percentage. ⚠ Warning: the speed parameter fields vary depending on the type of boom: - for jointed booms of 2 m, set the slow-down speed percentage to between 20 and 40; - for booms of 4 m, set the slow-down speed percentage to between 20 and 30; - for booms of 6 m, set the slow-down speed percentage to between 15 and 30; - for booms of 8 m, set the slow-down speed percentage to between 15 and 20;		
F33	Calibration speed	20 = 20% of the travel (minimum) / ... / 40 = 40% of the travel (maximum)
Setting the boom's travel automatic calibration, calculated as a percentage		
F34	Boom travel sensitivity	10 = maximum sensitivity / ... / 100 = minimum sensitivity (default)
Adjusting obstruction detection sensitivity during boom travel.		
F35	Slow-down sensitivity	10 = maximum sensitivity / ... / 100 = minimum sensitivity (default)
Adjusting obstruction detection sensitivity during slow-down.		
F37	Opening slow-down point	40 = 40% of the travel / ... / 60 = 60% travel
Percentage adjustment of the boom's total travel, from the beginning of the opening slow-down point. Warning! The percentage varies depending on the boom type: - for jointed booms of 2 m and 4 m, set the percentage to between 40 and 60; - for booms of 6 m and 8 m, set the percentage to between 60 and 70.		
F38	Closing slow-down point	20 = 20% of the travel / ... / 75 = 75% of the travel
Establishing the total travel percentage, from the beginning of the closing slow-down point. Warning! The percentage varies depending on the boom type: - for jointed booms and 2-meter booms, set the speed percentage to between 20 and 40; - for 2 m booms, set the percentage to between 40 and 60; - for 6 m booms, set the percentage to between 60 and 70; - for 8 m booms, set the percentage to between 65 and 75;		
F 49	Enabling serial connections	0 = Deactivated (default) / 1 = Paired / 2 = Alternate
To enable paired or alternate operation.		
F50	Save data	0 = Deactivated (default) / 1 = Activated
To save system users and settings in memory roll. 📖 This function only appears if the memory roll has been fitted into the control panel.		
F51	Read data	0 = Deactivated (default) / 1 = Activated
To upload the data saved in the memory roll into the control panel. 📖 This function only appears if the memory roll has been fitted into the control panel.		
F52	Passing settings in paired/alternating mode	0 = Deactivated (default) / 1 = Activated
Loading parameters of the MASTER barrier into the SLAVE barrier. 📖 This function appears only if function F 49 is set to either PAIRED or ALTERNATE.		
F60	Sleep Mode	
To reduce the amount of energy consumed by the stand-by photocells.		
F61	Pre-flashing	0 = when opening and closing (default) / 1 = only when closing / 2 = only when opening
After an opening or closing command, the flashing light connected to 10-E1m flashes before starting the maneuver. For setting the time, see function F 21.		

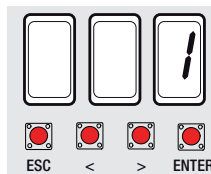
U 1 Entering a user	1 = Step-step command (open-close) / 2 = Sequential command (open-stop-close-stop) / 3 = Open only command / 4 = Partial command / 5 = contact B1-B2 output
Up to a maximum of 25 users can be entered and each can be associated to a function of choice among those available. Entering is done via transmitter or other control device (see ENTERING USERS AND ASSOCIATED COMMANDS).	
U 2 Deleting a user	
To delete a user (see DELETING SINGLE USERS paragraph)	
U 3 Deleting users	0 = Deactivated / 1 = Deleting all users
To delete all user.	
A 1 Setting the boom type	0 = Jointed boom / 2 = Boom 2 m / 4 = Boom 4 m / 6 = Boom 6 m / 8 = Boom m
To establish the boom type. △ The choice of boom type limits certain speed, slow-down and calibration limits. This is to safeguard the entire barrier.	
A 2 Motor test	0 = Disable / 1 = Activate
To verify the boom's proper rotating direction (see MOTOR TEST paragraph)	
A 3 Calibrating boom travel	0 = Disable / 1 = Activate
Automatic boom travel calibration (see CALIBRATING BOOM TRAVEL paragraph).	
A 4 Resetting parameters	0 = Disable / 1 = Activate
Warning! If need be, the default parameters can be restored. The default settings are restored and the travel calibration deleted. Restoring default settings and cancelling boom travel calibration operation.	
A 5 Counting maneuvers	
Show the number of completed maneuvers (--- = 0 maneuvers; 1 = 1,000 maneuvers; 100 = 100,000 maneuvers; 999 = 999,000).	
H 1 Version	
View the software version.	

Motor test

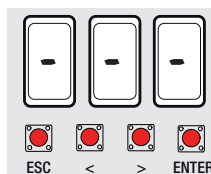
1. Select A 2. Press ENTER to confirm.



2. Select 1 to activate test. Press ENTER to confirm...

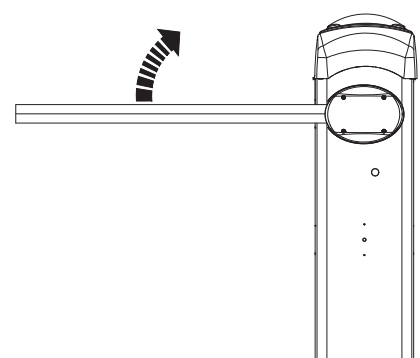
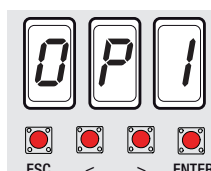


3. ... the dashes (---) will appear while waiting for the command.



4. Keep pressed the < key and check whether the barrier opens.

📖 If the barrier closes, invert the motor phases (M with N).



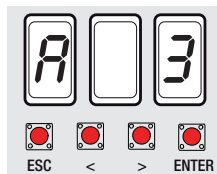
Travel calibration

 Before doing a travel calibration, establish the boom type, check that the boom is balanced and that the maneuvering area is free of obstructions.

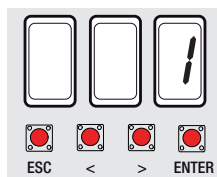
Important! While calibrating, all of the safety devices will be disabled excluding the TOTAL STOP one.

1. Select A 3.

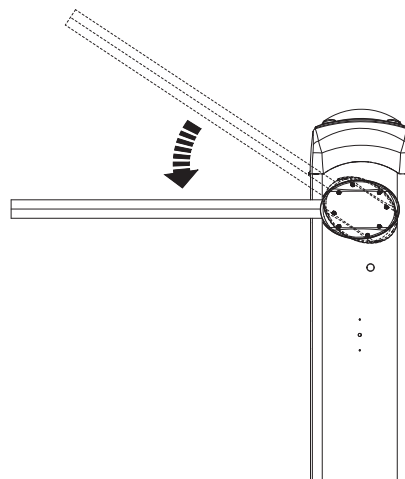
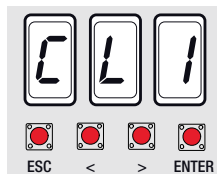
Press ENTER to confirm.



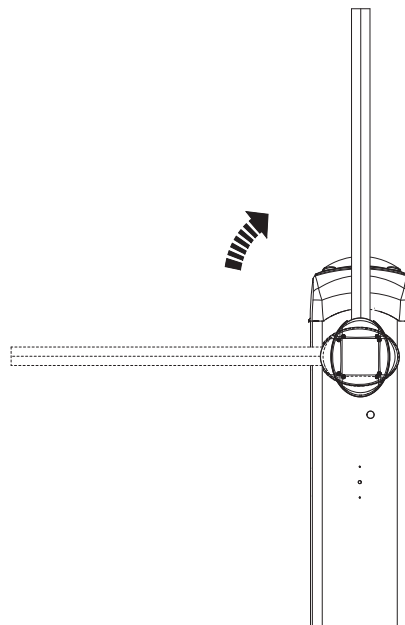
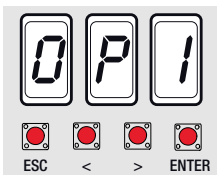
2. Select 1 and press ENTER to confirm that the barrier has calibrated itself automatically.




3. The barrier will perform a closing maneuver until the endstop point...



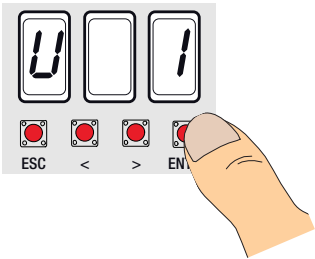
4. ... then, the barrier will perform an opening maneuver until the endstop point.



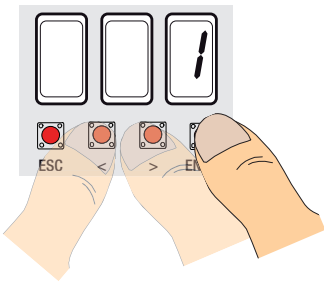
 When entering/deleting users, the flashing numbers that appear, are numbers that can be used for other users you may wish to enter (maximum 25 users).


Entering a user with an associated command

1. Select U 1.
Press ENTER to confirm.

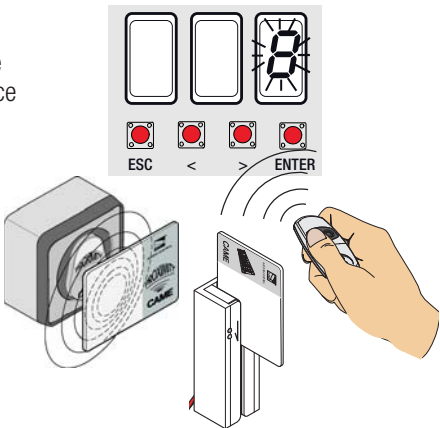



2. Select a command to associate to the user.
The commands are:
- step-step (open-close) = 1;
- open = 3;
- partial opening/pedestrian = 4.



 The partial/pedestrian command appears only of function F 49 is activated.
Press ENTER to confirm...

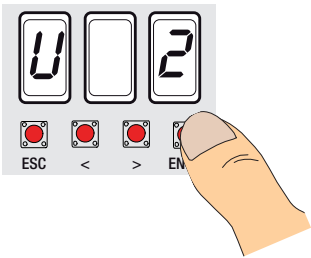
3. ... an available number between 1 and 25 will flash for a few seconds. This number is then assigned to the user after having sent the code with the transmitter or other control device (sensor, card reader or keypad selector).



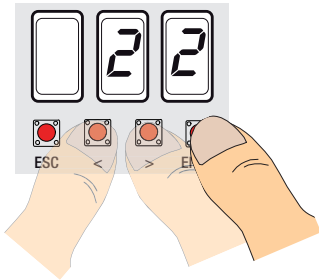
User	Associated command
1 - 	
2 -	
3 -	
4 -	
5 -	
6 -	
7 -	
8 -	
9 -	
10 -	
11 -	
12 -	
13 -	
14 -	
15 -	
16 -	
17 -	
18 -	
19 -	
20 -	
21 -	
22 -	
23 -	
24 -	
25 -	

Deleting a single user

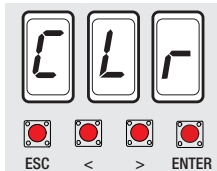
1. Select U 2.
Press ENTER to confirm.



2. Select the user number to delete by using the arrow keys. Press ENTER to confirm...

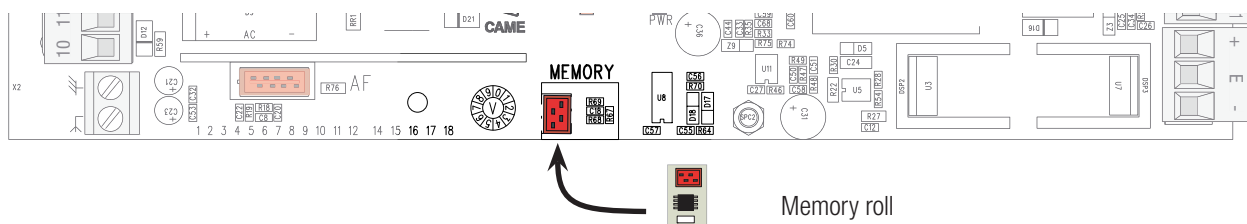


3. ...the abbreviation CLr will appear to confirm the user has been deleted.



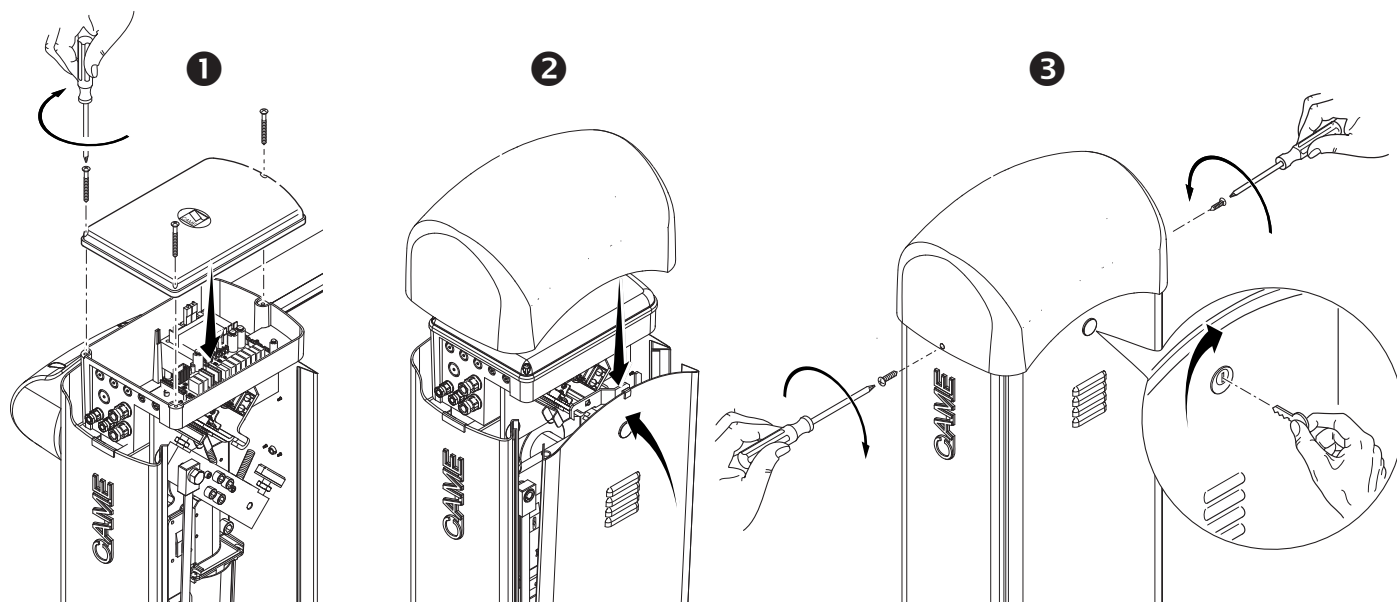
Memory Roll Card

To memorize user data and configure the system, to then reuse them with another control board even on another system.



FINAL OPERATIONS

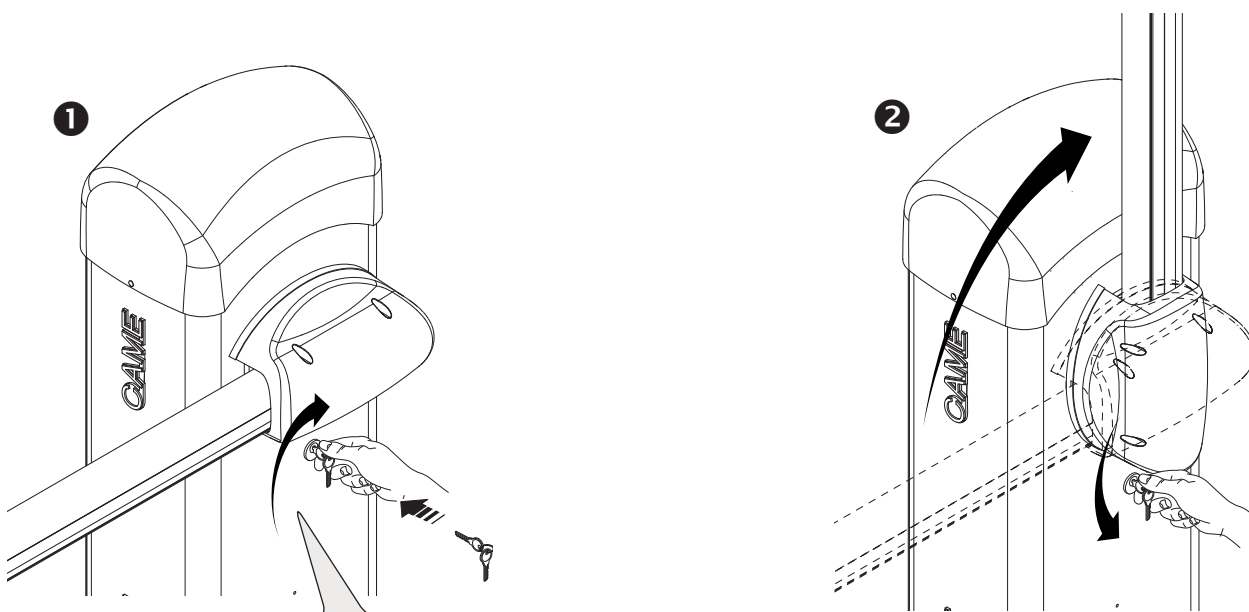
When you done with the electrical connections and setting up, fit the control panel cover and fasten it with the screws **1**. Replace the inspection hatch and the dome **2**. Lock the hatch by using the key and fasten the dome using the screws **3**.



RELEASING THE BOOM

⚠ This procedure must be done with the main power cut off.

Fit the key into the lock and turn it clockwise **1**. Manually lift the boom and lock it again by turning the key counter clockwise **2**.



⚠ **WARNING!** This operation is potentially hazardous for user, when for whatever reason, such as the boom being badly fastened, ripped out or broken during an accident, and so on, the loosened springs no longer provide the proper balancing action. This could lead to a sudden rotation of the boom attachment and/or of the boom itself.

 Important! Start by doing the following to both operators:

- fit the RSE card (with DIP switches sent to OFF) onto the control panel connector of both barriers.

Connect the two control panels with a CAT 5 type cable (maximum 1,000 m) to terminals A-A / B-B / GND-GND / read the CONNECTIONS FOR PAIRED OR ALTERNATE OPERATION paragraph.

Connect all of the control and safety devices to the MASTER control panel.

 Important! Deactivate function F 19 (automatic closing time) on the SLAVE barrier's control panel.

Configuring the MASTER operator

Select function F 49. Press ENTER to confirm.

Select 1 (paired) and press ENTER.

Transferring parameters from MASTER to SLAVE

Select function F 52 on the MASTER control panel.

Select 1 and press ENTER.

Programming

On both barriers, set the following functions:

- setting the type of motor (A1);
- opening direction (F54);
- total stop (F1);
- travel calibration (A3).

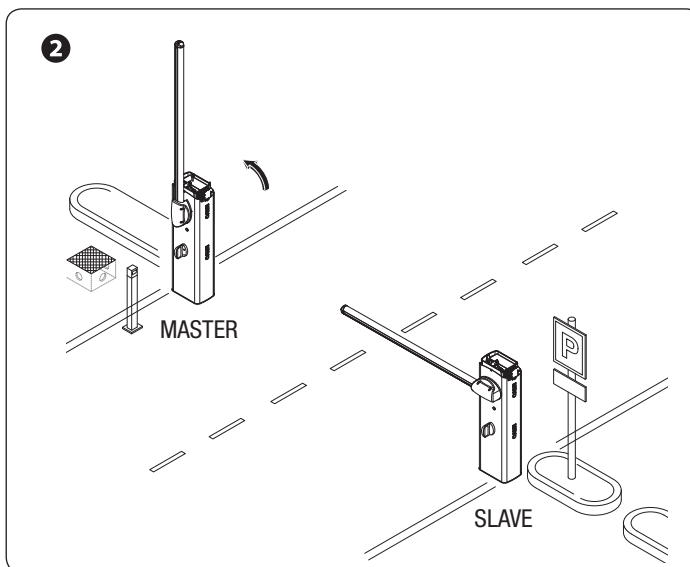
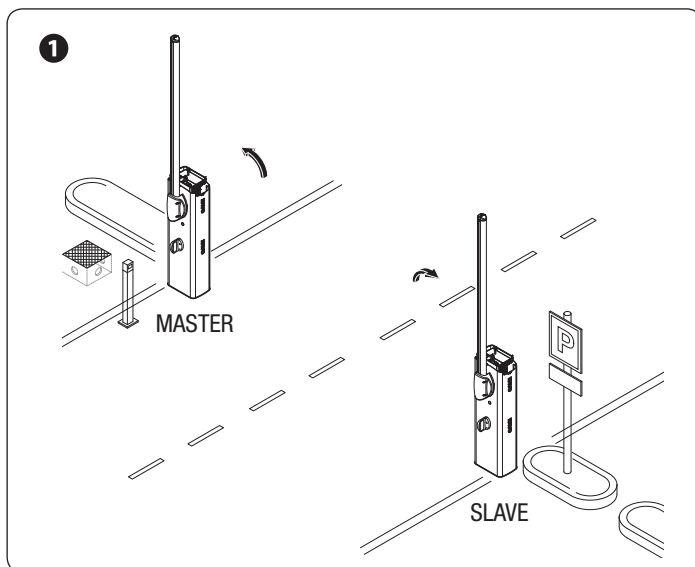
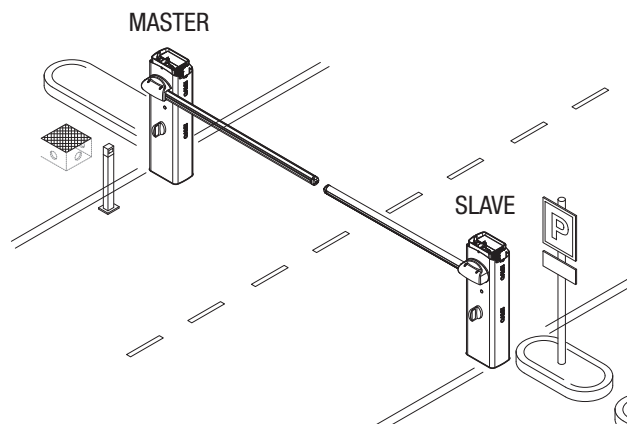
Carry out any settings and adjustments on the MASTER control panel.

Operating modes

❶ STEP-STEP or OPEN ONLY command. Both booms open.

❷ PARTIAL OPENING/PEDESTRIAN command. Only the MASTER barrier opens.

For the types of command that can be selected and matched to users, see the ENTERING USERS WITH ASSOCIATED COMMANDS.



Important! Start by performing the following procedures on both operators:

- fit the RSE card (with DIP switches sent to OFF) onto the control panel connector of both barriers.

Connect the two control panels with a CAT 5 type cable (maximum 1,000 m) to terminals A-A / B-B / GND-GND / read the CONNECTIONS FOR PAIRED OR ALTERNATE OPERATION paragraph.

- connect all of the control and safety devices to the control panel of the MASTER operator.

Important! Deactivate function F 19 (automatic closing time) on the SLAVE barrier's control panel.

Configuring the MASTER operator

Select function F 49. Press ENTER to confirm.

Select 2 (alternate) and press ENTER.

Transferring parameters from MASTER to SLAVE

Select function F 52 on the MASTER control panel.

Select 1 and press ENTER.

Programming

On both barriers, set the following functions:

- setting the type of motor (A1);
- opening direction F 54 ;
- total stop (F1);
- travel calibration (A3).

Carry out any settings and adjustments on the MASTER control panel.

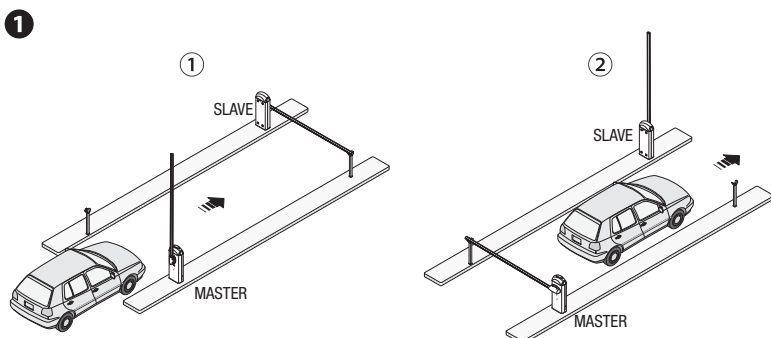
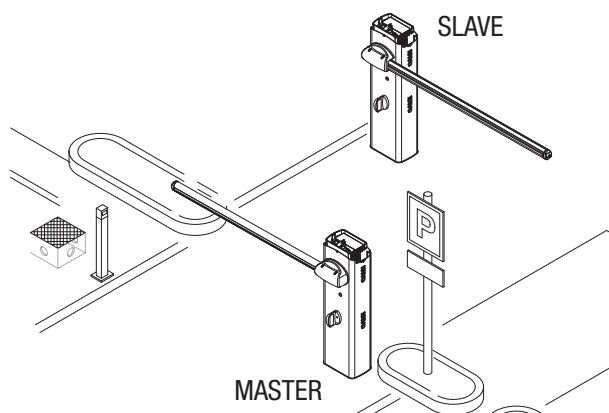
Operating modes

① OPEN ONLY command (contact 2-3). For opening the MASTER barrier boom.

② PARTIAL/PEDESTRIAN OPENING (contact 2-3P). For opening the SLAVE barrier boom.

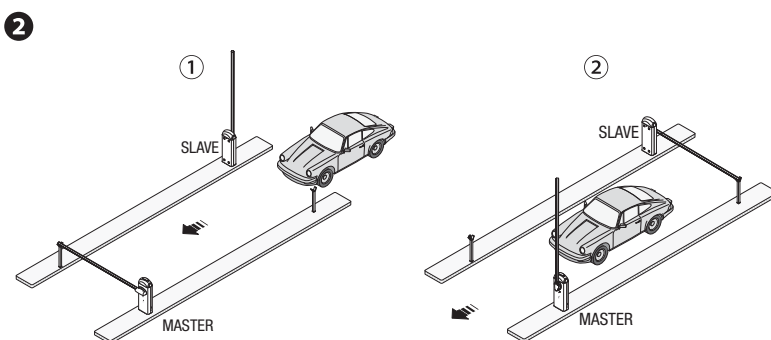
③ STEP-STEP command (contact 2-7). Both booms open. This is an emergency opening command, for freeing up the passage.

For the types of command that can be selected and paired to users, see the ENTERING USERS WITH ASSOCIATED COMMANDS



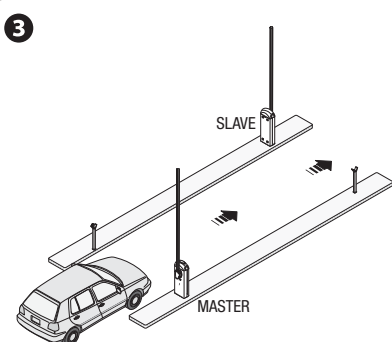
Send the ONLY OPEN command (contact 2-3) from a transmitter or other control device, to open the boom of the MASTER barrier ①.

Approach the SLAVE barrier. It will automatically open only after the MASTER barrier automatically closes. The automatic closing of the MASTER barrier is excluded in the event that the safety devices detect an obstruction (such as when a car has yet to clear the MASTER barrier) ②.



Send the PARTIAL/PEDESTRIAN OPENING command (contact 2-3P) from a transmitter or other control device, to open the boom on the SLAVE barrier ①.

Approach the MASTER barrier. It will automatically open only after the SALVE barrier automatically closes. The automatic closing of the SLAVE barrier is excluded in the event that the safety devices detect an obstruction (such as when a car has yet to clear the SLAVE barrier) ②.



Send the STEP-STEP (contact 2-7) command from a transmitter or other control device, to simultaneously open the booms of the MASTER and SLAVE barrier.

ERROR MESSAGE

 The error messages appear on display and are notified by LEDs.

Er1	The boom travel calibration was interrupted by the activation of the STOP button.
Er3	Encoder is broken.
Er4	Services test error.
Er5	Insufficient working time
Er6	Maximum number of obstructions detected.
Er7	Overheating transformer / open inspection hatch / released boom.
Er8	Encoder excluded.
C0	Contact 1-2 (NC) is open.
C1, C4, C5 or C9	The (NC) contacts are open.
The warning LED flashes	The control board is not yet calibrated for the boom travel.

TROUBLESHOOTING

PROBLEM	REFERENCE	CHECK
The boom neither opens nor closes	1-2-3-4-6-8-18	1 - Lock the inspection hatch with the key
The boom opens but does not close	4-7	2 - Deactivate the MAINTAINED ACTION function
The boom closes but does not open	4-7	3 - Check the power supply and fuses
The barrier does not perform automatic closing	11-12-13	4 - The NC contacts are open
The barrier does not work with the transmitter	2-14-16	6 - Deactivate the MASTER-SLAVE function
The boom's direction of travel is inverted	7-18	7 - Check the boom's balancing and spring tautness
Only one transmitter works	22	8 - Deactivate the OBSTRUCTION DETECTION function
The photocells do not work	12-23-24	11 - Activate the AUTOMATIC CLOSING function
The warning LED flashes quickly	4	12 - Check the proper direction of travel
The warning LED stays lit	13	13 - Check the control devices
The boom does not reach the endstop	7	14 - Replace the AF card
The boom cannot be balanced	7-15	15 - Check the length ration between boom and applied accessories
The barrier does not slow down	7-15	16 - Memorize the radio code again
The barrier does not work with emergency batteries	8-25-26	18 - Adjust the sensitivity
The boom starts slow	7	22 - Enter or duplicate the same code on all transmitters
		23 - Activate the photocells
		24 - Connect the photocells serially instead of in parallel fashion
		25 - Check the batteries
		26 - Respect the photocell's power supply polarities

Periodic maintenance

 Before doing any maintenance, cut off the power supply, to prevent any hazardous situations caused by accidental boom movements.

Periodic maintenance log kept by users (every six months)

[illegible]

Extraordinary maintenance

⚠ The following table is for logging any extraordinary maintenance jobs, repairs and improvements performed by specialized contractors.
📖 Any extraordinary maintenance jobs must be done only by specialized technicians.

Extraordinary maintenance log

Fitter's stamp	Name of operator
	Job performed on (date)
	Technician's signature
	Requester's signature
Job performed _____ _____	

Fitter's stamp	Name of operator
	Job performed on (date)
	Technician's signature
	Requester's signature
Job performed _____ _____	

Fitter's stamp	Name of operator
	Job performed on (date)
	Technician's signature
	Requester's signature
Job performed _____ _____	

Fitter's stamp	Name of operator
	Job performed on (date)
	Technician's signature
	Requester's signature
Job performed _____ _____	

Fitter's stamp	Name of operator
	Job performed on (date)
	Technician's signature
	Requester's signature
Job performed _____ _____	

Fitter's stamp	Name of operator
	Job performed on (date)
	Technician's signature
	Requester's signature
Job performed _____ _____	

DISMANTLING AND DISPOSAL

☞ CAME CANCELLI AUTOMATICI S.p.A. employs a certified Environmental Management System at its premises, compliant with the UNI EN ISO 14001 standard to ensure the environment is safeguarded.

Please continue safeguarding the environment. At CAME we consider it one of the fundamentals of our operating and market strategies. Simply follow these brief disposal guidelines:

♻️ DISPOSING OF THE PACKAGING

The packaging materials (cardboard, plastic, and so on) should be disposed of as solid urban waste, and simply separated from other waste for recycling.

Always make sure you comply with local laws before dismantling and disposing of the product.

DO NOT DISPOSE OF IN NATURE!

♻️ DISMANTLING AND DISPOSAL

Our products are made with different materials. Most of these (aluminum, plastic, iron, electrical cables) is classified as solid urban waste.

They can be recycled by separating them before dumping at authorized city dumps.

Whereas other components (control boards, batteries, transmitters, and so on) may contain hazardous pollutants.

These must therefore be disposed of by authorized, certified professional services.

Before disposing, it is always advisable to check with the specific laws that apply in your area.

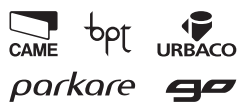
DO NOT DISPOSE OF IN NATURE!

REFERENCE REGULATIONS

The product complies to the reference regulations in effect.

English - Manual code: **FA00132-EN v. 2** 08/2016 © CAME Cancelli Automatici S.p.A.
The data and information in this manual may be changed at any time and without notice from CAME Cancelli Automatici S.p.A.

CAME
safety & comfort



Came S.p.A.

Via Martiri Della Libertà, 15
31030 **Dosson di Casier**
Treviso - Italy
📞 (+39) 0422 4940
📠 (+39) 0422 4941

Via Cornia, 1/b - 1/c
33079 **Sesto al Reghena**
Pordenone - Italy
📞 (+39) 0434 698111
📠 (+39) 0434 698434

www.came.com