

VIPER LED

ELECTROMECHANICAL GEAR MOTOR FOR SECTIONAL DOORS UP TO 16 m² AND OVERHEAD DOORS UP TO 14 m², 24 Vdc



PLUS

New built-in led courtesy light

24 Vdc motor to offer full safety for residential use

New control board suitable for LED KIT integrability

One or three pcs pre-assembled guide with chain

Adjustable motor head

Courtesy light setting

Battery back-up (optional in case of power failure)



Compact release carriage



Anti-intrusion function








Adjustable motor head



Safe and silent functioning thanks to chain transmission

MODELS

CODE	DESCRIPTION	PCS PALLET
 VIP7U	For sectional doors up to 10 m ² , 24 Vdc motor, control unit and built-in receiver, 700 N force and pre-assembled single piece chain rail 3320 mm (1 pc)	70 (only head)
 VIP7	For sectional doors up to 10 m ² , 24 Vdc motor, control unit and built-in receiver, 700 N force and three pieces chain rail with fast joints (1 pc)	36
 VIP10U	For sectional doors up to 13 m ² , 24 Vdc motor, control unit and built-in receiver, 1000 N force and pre-assembled single piece chain rail 3320 mm (1 pc)	70 (only head)
 VIP10	For sectional doors up to 13 m ² , 24 Vdc motor, control unit and built-in receiver, 1000 N force and three pieces chain rail with fast joints (1 pc)	36
 VIP104	For sectional doors up to 16 m ² , 24 Vdc motor, control unit and built-in receiver, 1000 N force and pre-assembled single piece chain rail 4000 mm (1 pc)	70 (only head)

		VIP7U/VIP7	VIP10U/VIP10	VIP104
MECHANICAL DATA				
speed	cm/s	12	12	12
pulling force	N	700	1000	1000
working cycle	%	60	60	60
ELECTRICAL DATA				
power	Vac	230	230	230
consumption	A	0,45	0,7	0,7
absorbed power	W	100	160	160
integrated lights		yes	yes	yes
GENERIC DATA				
protection degree	IP	43	43	43
dimensions (L - P - H)	mm	200 - 370 - 155	200 - 370 - 155	200 - 370 - 155
weight	kg	12/13	12/13	14
working temperature	°C	-20 + 55	-20 + 55	-20 + 55
door maximum dimensions	m ²	10	13	16

Data are subject to smoothness and balance of the door and the type of rail used

LIMIT USE

Sectional	Up and over	No projecting up and over
-----------	-------------	---------------------------

VIP7U/VIP7

H max = 2,7 m	H max = 3 m	H max = 2,5 m
m ² max = 10 m ²	m ² max = 9 m ²	m ² max = 9 m ²

VIP10U/VIP10

H max = 2,7 m	H max = 3 m	H max = 2,5 m
m ² max = 13 m ²	m ² max = 14 m ²	m ² max = 14 m ²

VIP104

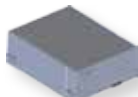
H max = 3,4 m	H max = 3,4 m	H max = 3,2 m
m ² max = 16 m ²	m ² max = 14 m ²	m ² max = 14 m ²

ACCESSORIES



BO-SEZ
Swinging arm for counterweight overhead doors

PC 1



KBP
Battery back-up kit

PC 1



SBCO
External unlocking system L=3000 mm

PC 1



SBLST
Kit for external unlock with key and metal cord

PC 1



STF-SEZ
Kit supplementary fixing ceiling guide

PC 1



STS-SEZ
Kit 2 supplementary fixing clamps

PC 1



520STAF029A00
Fixing clamp

PC 1



TS
Warning board

PC 1

LED KIT - KIT TO LIGHT UP THE GARAGE DOOR



QUADRO
Night sensor

+



VIP1
Main board for led lights control

+



STIKFW
Led garden lights (white color). PC 2

=

KVIPLEDFW
PC 1

LED KIT - KIT TO LIGHT UP THE GARAGE DOOR



QUADRO
Night sensor

+



VIP1
Main board for led lights control

+



STIKFB
Led garden lights (brown color). PC 2

=

KVIPLEDFB
PC 1