



Highest adhesion on common substrates, good adaptation to the contours of the component transitions thanks to high mouldability: Foil Inside DuoSL¹⁰⁵⁰.

DGMB QS 4

QNG ✓



Foil Inside Duo SL¹⁰⁵⁰

The reliable protection for the connecting joint.

Product features:

Foil Inside DuoSL¹⁰⁵⁰ forms a layer that is airtight, windtight, and watertight to driving rain – depending on the area of use – in the connecting and expansion joints between windows and doors and the adjacent wall materials.

Its main purpose is in the interior, but it can also be used on the outside. Thanks to the adhesion on both sides, the “Z” design as described in the LzM is excellent. It can be used in a number of different situations in both renovation and new construction projects thanks to its performance characteristics (cf. drawing icons). Installation as a second sealing layer below the window sill offers another possible application.

- Exceptional adhesion on common wall materials and frame materials
- Immediate adhesion even with overlaps
- High tear strength, and yet easy to mould for shaping corners/transitions
- Foil Inside DuoSL¹⁰⁵⁰ is watertight against driving rain to $\geq 1,050$ Pa (EN 12208)
- UV-resistant for 12 months
- Watertight to 10,000 Pa



Practical finger lift for efficient processing, including self-adhesive strips on both sides



Product benefits:

- seals airtight, windtight, and watertight to driving rain as well as open to vapour diffusion for the inner and outer sealing layer according to DIN 18355
- water vapour diffusion permeability (from the adhesive side) is vapour-permeable, $s_d \leq 0.5$ m (in acc. with DIN 4108-3)
- water vapour diffusion permeability (from the nonwoven side) is diffusion-inhibiting, $s_d \geq 10$ m (in acc. with DIN 4108-3)
- the adhesive strength ensures exceptional adhesion
- immediate adhesion, even with overlaps
- fully adhesive on one side (adhesive side), 20 mm adhesion (nonwoven side) for two-sided application
- high tear strength, and yet easy to mould for shaping corners and transitions
- can be plastered, bonded, and painted over
- concealed installation within the structure, e.g. under trims or lesenes

- UV-resistant for 12 months
- watertight against driving rain over 1,050 Pa
- flexible and elastic, compensates for joint movements
- moisture and temperature-resistant
- easy to process thanks to overlapping, perforated masking paper (finger lift)
- joint sealing compliant with the RAL "Leitfaden zur fachgerechten Montage" [Guideline for Proper Installation] and the German Building Energy Law (GEG)
- tested to be very low in emissions according to EMICODE EC1 Plus

Technical data:

Material:	Fleece-backed plastic polymer foil, adhesive on one side
Building material class: DIN EN 13501	Class E
Self-adhesion:	Yes
Water vapour diffusion permeability: (from the adhesive side) DIN EN ISO 12572	Vapour-permeable, $s_d \leq 0.5$ m
Water vapour diffusion permeability: (from the nonwoven side) DIN EN ISO 12572	Diffusion-inhibiting, $s_d \geq 10$ m
Joint permeability coefficient: DIN EN 12114	$a < 0.1$ m ³ /[h * m * (daPa) ^{2/3}], airtight in acc. with RAL-LzM specification
Watertightness against driving rain: DIN EN 1027	$\geq 1,050$ Pa
Watertightness: UV stability:	$\geq 10,000$ Pa 12 months
Temperature resistance:	From approx. -40 °C to +90 °C
Ambient temperature during handling:	-10 °C to +45 °C
Substrate temperature when processing:	From -10 °C (ice-free)
Compatibility with adjacent building materials:	Satisfied
Storage temperature:	At +0 °C to +30 °C
Shelf life:	18 months with dry storage in unopened original packaging
Colour:	White

Product name	PU	Item no.
Foil Inside Duo single SL ¹⁰⁵⁰ 75 mm perforation	8 x 30 m	9364759
Foil Inside Duo single SL ¹⁰⁵⁰ 90 mm perforation	6 x 30 m	9364760
Foil Inside Duo double SL ¹⁰⁵⁰ 120 mm perforation	4 x 30 m	9364762
Foil Inside Duo double SL ¹⁰⁵⁰ 150 mm perforation	4 x 30 m	9364763
Foil Inside Duo double SL ¹⁰⁵⁰ 200 mm perforation	2 x 30 m	9364764
Foil Inside Duo double SL ¹⁰⁵⁰ 250 mm perforation	2 x 30 m	9364765

Preparation and processing:

The Foil Inside DuoSL¹⁰⁵⁰ must be at the specified storage temperature during processing. Under these conditions, the Foil Inside DuoSL¹⁰⁵⁰ can be processed at ambient temperatures from -10 °C. The surface must be solid, dry, clean and free of grease, separating agents, solvents, dust, ice, white frost and loose parts. The substrate and window profiles must be free of moisture/condensate.



Before application, the suitability of the material for the intended application is to be verified through appropriate tests performed by the customer. With porous or moist substrates or those that lose sand, pretreating with a suitable primer (blaugelb Spray Primer, item no. 9066539) can increase adhesion.

Foil Inside DuoSL¹⁰⁵⁰ is intended for application on one side. The self-adhesive has outstanding adhesion on commercially available window profiles and standard construction substrates. The foil is flexible and elastic. Rolling on during installation is critical for activating the self-adhesive properties of the foil. It ensures very high, permanent adhesion integrity on the substrate, even when installing overhead.

Unwind the Foil Inside DuoSL¹⁰⁵⁰ from the roll and cut it to the required length, adding approx. 5 cm. Remove the perforated protective paper on the fully adhesive side and bond the foil to the frame. Press the Foil Inside DuoSL¹⁰⁵⁰ tightly onto the window profile.

Completely fill the centre functional layer with the intended insulation material. Then bond the Foil Inside DuoSL¹⁰⁵⁰ without stretching to the anchor base with the self-adhesive strip, forming a sufficient expansion loop. [Note on expansion loop as installation requirement: cf. DIN 4108-T7 / RAL Installation Guide (LzM) 2024-03]. In the corners of the jamb, the foil should be installed in a trough shape with an overlap of approx. 30 – 50 mm (taking into account the joint widths to be sealed). The “corner trough formation” thus achieved is recommended. The recommendations from the technical bulletin “Verputzen von Fensteranschlussfolien” [Plastering of Window Connection Foils]: 2016-08 should be complied with for the bonding width in the jamb area. Press the Foil Inside DuoSL¹⁰⁵⁰ tightly onto the anchor base.

The Pressure Roller (item no. 9074068) is suitable for pressing on to the window frame and the anchor base.

Note on proper installation:

Make sure that any leaks due to open spots are avoided. The convection created in this situation introduces more airborne moisture into the structure than can escape through the planned diffusion.

Delivery and storage form:

Store in the original packaging in a dry place and protect against effects of frost and heat. Can be stored for 18 months at a storage temperature between +0 °C and +30 °C.

Disposal:

Scraps of Foil Inside DuoSL¹⁰⁵⁰ can be disposed of in the household waste. The disposal generally conforms with the national and local specifications.

Safety note:

According to the available specifications and guidelines, the product is not a hazardous substance.

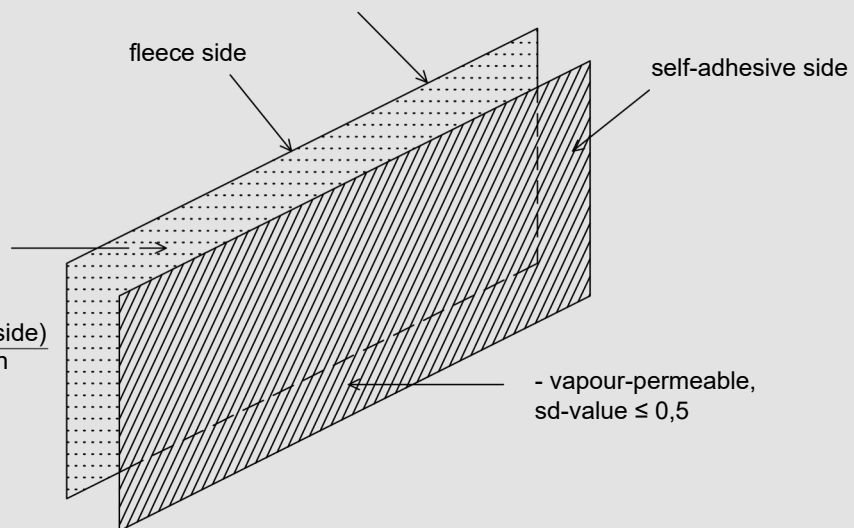
requirements:

GEG2024; DIN4108-7; EN 12207;
DIN18355; DIN18360

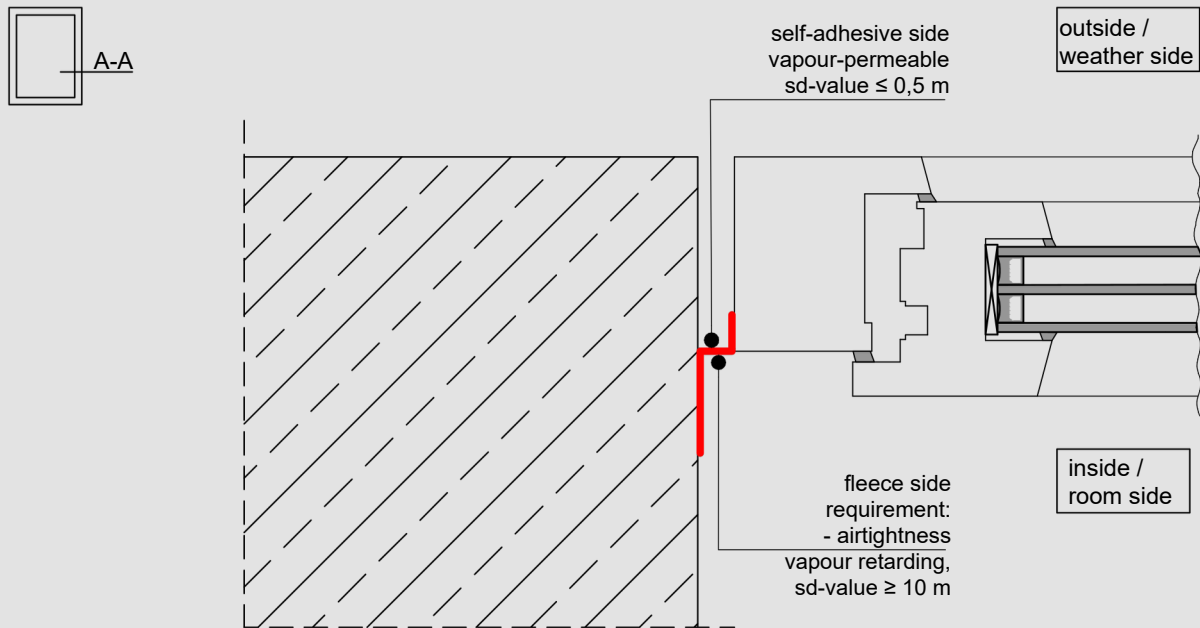
airtightness layer (room side)
- airtightness acc. to EN12207

weather protection layer (weather side)
- watertightness against driving rain acc. to DIN EN12208
- windtightness

- vapour retarding, sd-value ≥ 10 m
- waterproof ≥ 10000 Pa
- UV resistance 12 month



- vapour-permeable, sd-value $\leq 0,5$



The images only show the application area of the foil. Other sealing layers are not taken into account. The listed requirements correspond to the service range of 'Folien'. They must be checked against the applicable national standards.

