



Where Smiles Meet Precision

Smile Scan



Double Tips

Experience seamless scanning with Large & Small sized tips, catering to various mouth sizes for a comfortable experience.



L 22×18mm



S 18×16mm



Double Buttons

Innovative double-button layout lets you effortlessly rotate the device while maintaining your posture, streamlining your scanning process.



Calibration Free

Robust system stability without the need for accuracy and color calibration, reducing maintenance costs.



Lightweight - 198g

198g ultra-light body makes the operation simpler and more user-friendly.



Exceptional Precision - 20µm

The average error of the entire arch is as low as 20 µm, surpassing clinical accuracy standards and offering heightened scanning tolerance.



Preheating/Powder Free

Say goodbye to unnecessary waiting, maximizing your workflow efficiency.



AI + High-Speed Visual Technology

Fast speed combined with AI intelligent adaptation to varying mouth conditions (dark spots, high exposure, etc.), automatically eliminates environmental interference, ensuring consistently clear and accurate data.



USB Connection

Easily connect through USB for seamless power supply, enhancing operational flexibility.



Guilin Kevin Peter Technology Co., Ltd



+86-773-2352685

sales1@kvpeter.com

North side of Linsu Rd, Lingui Town, Lingui Dist., Guilin, Guangxi 541100, P.R. China

Smile Scan/KP Digital Cloud Service Platform

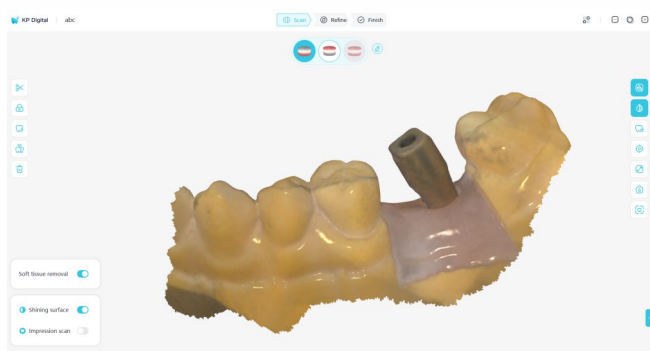


Responsive UI

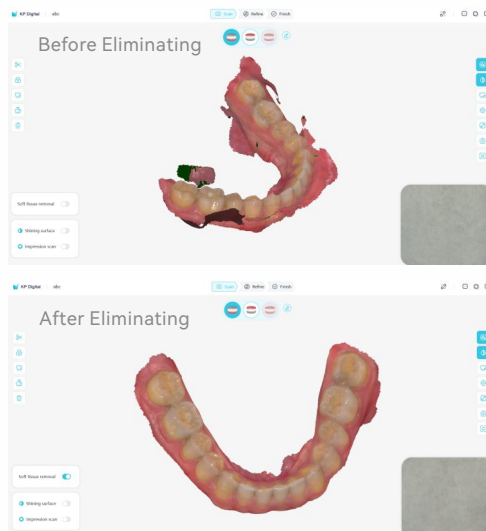
Designed for simplicity and functionality, it can adapt to different screen sizes and devices to ensure a seamless and consistent user experience.



Ai Scanning



Adapt to harsh oral conditions such as dark spots and high reflections.

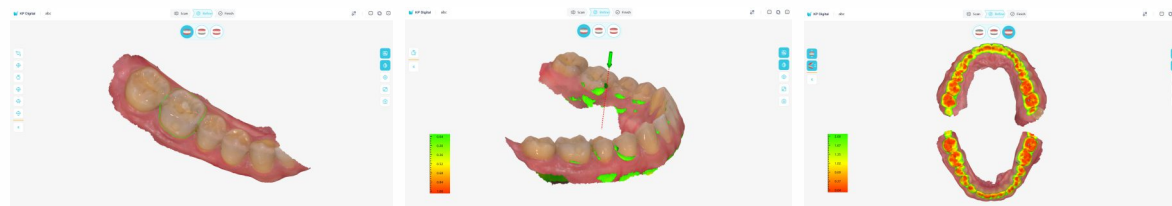


Automatically identify and eliminate unnecessary soft tissue.



Comprehensive Toolbox

Unlock a variety of tools to enhance your scans:



Create precise margin lines

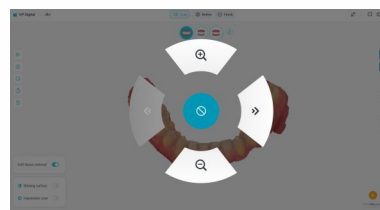
Identify undercuts

Detect bite spaces

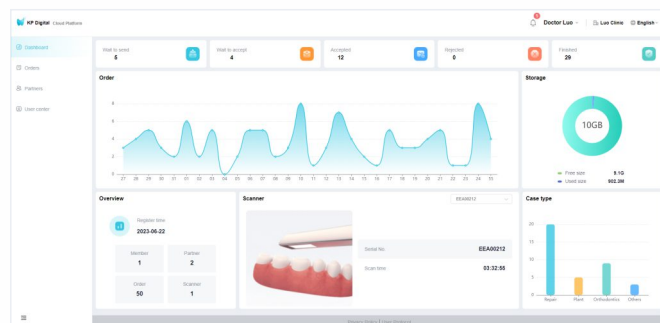


Somatosensory Control

Somatosensory control allows you to view the details of dental molds in all directions without touching the computer, providing you with a more user friendly experience.



Data Hub



Insightful Data Analytics:

Access a comprehensive data statistics system through clear and intuitive charts. Gain valuable insights into your business's growth and development.

Robust Cloud Ecosystem:

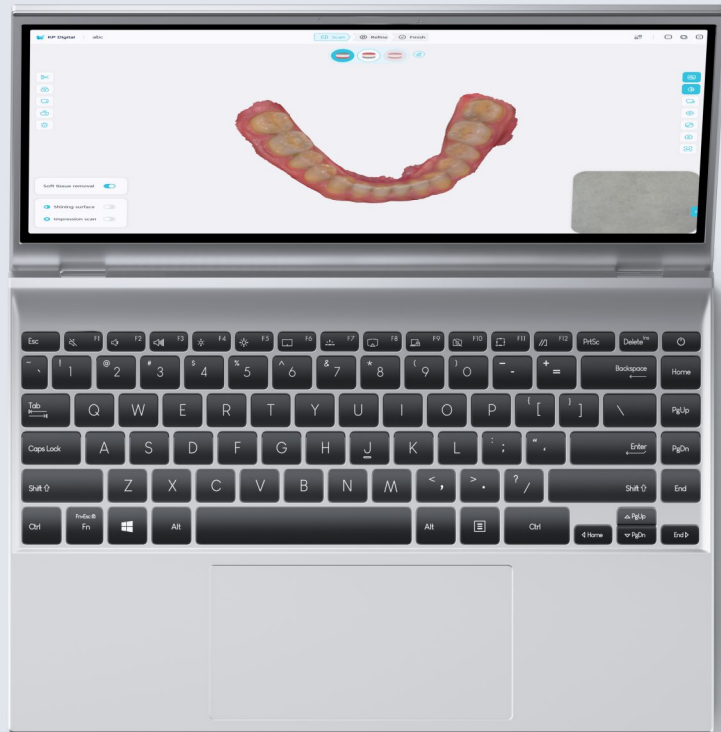
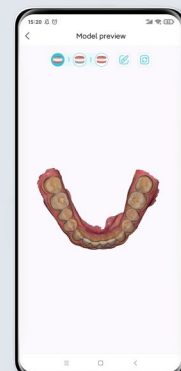
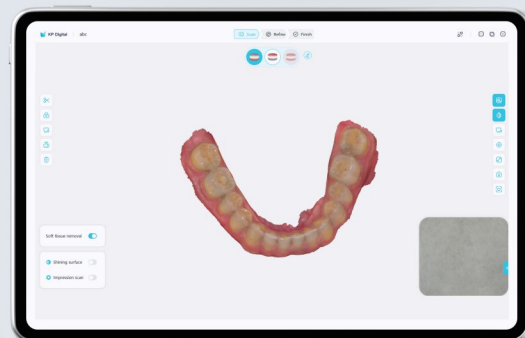
Experience the power of a complete partner management system within our cloud ecosystem. Simplify case processing with one-click delivery to processing facilities.

Effortless Case Sharing:
Share cases instantly with a single scan. Send digital models directly to patients, enhancing doctor-patient relationships while minimizing communication costs.



Versatile Platforms Availability + Offline Capability

Support PC, web browser, and mobile device for flexibility. Support offline functionality, allowing you to scan and access data anytime, anywhere.



Specifications

Handpiece

Size 219 × 46 × 36mm
Weight 198g

Scanning

Scanning precision of entire arch 20µm
Field of view 16×14mm (L) 12×12mm (S)
Button Double buttons

Tip

Size 22 × 18mm (L) 18 × 16mm (S)
Steaming sterilization Up to 60 times - 134°C - 4 minutes

Auxiliary power supply

NO

Remote control

YES

Calibration

Calibration free

Minimum System Requirements

Recommended System Specification

CPU	Intel Core i7-10870H	Intel Core i7-12700H
Graphics card	NVIDIA GTX1660	NVIDIA RTX3060
Memory	16GB	32GB
Hard disk	512GB SSD	1TB SSD
Operation system	Win10 / Win11 64bit	Win10 / Win11 64bit
Connector	USB 3.0	USB 3.0
LCD	1920*1080 60Hz	1920*1080 60Hz