

X-Smart® Apex Locator



Getting Started

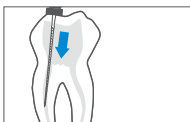
Disconnect the charger from the device if connected. Before connecting the measurement cable with attached lip clip and file clip to the patient, plug the measurement cable into the device.



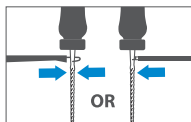
Turn on the device by pressing on/off button.



Attach the lip clip to the patient.



Gently insert the file into the canal.



Connect the file clip or touch probe to the metal shaft of the file.



Two initial beeps indicate closed measurement circuit and beginning of length determination.

Battery status indication



When the battery is low (lower than 25%), battery indicator will turn blinking red, means that the battery requires recharging.



Charging



During battery charging, charging screen is activated with battery symbol and battery level (percentage) on the screen.

Duration of charging:
Approximately 3 hours.

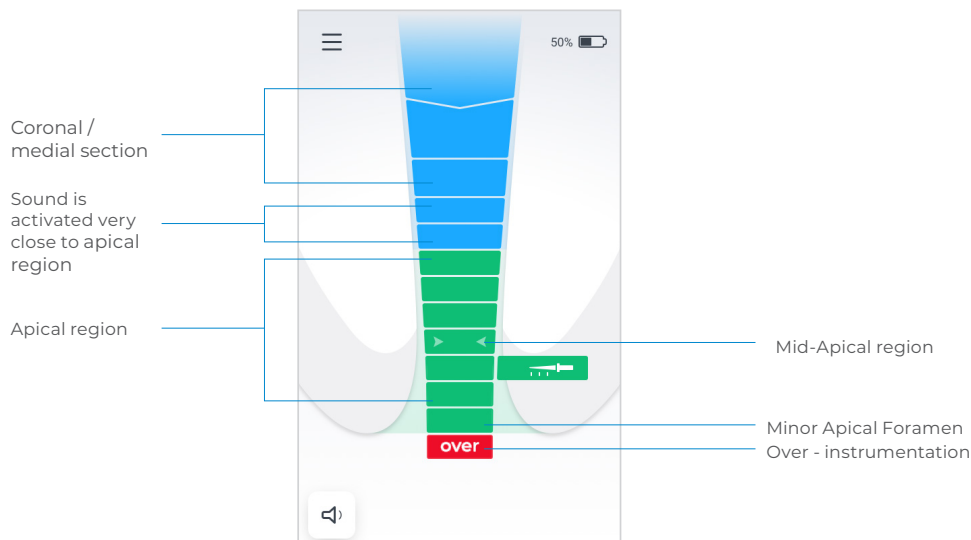
Battery replacement

X-Smart® Apex Locator is powered by a lithium-ion rechargeable battery.

Contact your Dentsply Sirona representative for battery replacement.



Tips for Successful Length Determination



Absence of the two beeps audio signal indicates a faulty connection. Disconnect the measurement cable from the patient and check cable connections (see IFU, 6.5), clean the file clip and the lip clip, moisten the canal if necessary and start again.



The light blue bars correspond to the coronal/medial section. When the file reaches the warning zone very close to the apical region, an audio signal sounds.



As the file progresses in the canal, subsequent green bars in the apical region turn on gradually and the interval between the audio signals becomes shorter.



When the last green bar is reached, a solid tone is emitted. The indication of the last green bar on the X-Smart® Apex Locator screen relates to the minor apical foramen file position.



A red "over" segment and an audio warning signal (rapid intermittent signal) indicate that the file has passed the apex.



Dr's Choice
This variable apical line can be set within the green zone (see IFU 6.8.1). When Dr's Choice apical line is set, clear visual and audio indication is given that the file tip has reached this pre-selected position.

For additional product resources visit
www.dentsplysirona.com/endoresources/XSmartApexLocator